

E EGGS  
aise

PILLSBURY  
**FLOUR**

5-LB. BAG  
**39**¢

PURE VEGETABLE SHORTENING  
**Snowdrift**

3-LB. CAN  
**59**¢

FEILER'S BEEF  
**STEAKS**

FRESH-FROZEN  
SANDWICH-SIZE  
2-OZ. PKG.  
**7**¢

**FASTER**

QUALITY FROM  
FRESH FRUITS...

**ES**

**35**¢



FANCY, NEW CROP, LARGE

**Brazil Nuts**

**29**¢ lb.

**SPAGHETTINI  
PORK 'N BEANS  
POTATOES**

ANTHONY'S 5-MINUTE  
12-OZ. PKG.

**15**¢

HUNT'S  
NO. 2½  
CAN

**19**¢

ALLEN'S SWEET  
NO. 2½ CAN

**25**¢

WE WILL BE  
**CLOSED**  
ALL DAY  
VETERANS' DAY  
TUESDAY  
NOV. 11th

Buddy Boy  
**POP  
CORN**

2  
1-lb.  
Pkgs. **25**¢

The Boys  
**BLEU CHEESE  
DRESSING**

Pint  
Jar **49**¢

Hi-Country  
**APPLE  
JUICE**

46-oz.  
Can **29**¢

KENDALL DOG FOOD  
**KIBBLED  
FIVES**

27-oz.  
Pkg. **34**¢  
4-lb.  
Pkg. **73**¢

**FROZEN FOODS**

BANQUET FROZEN

**PIES**

CHICKEN  
TURKEY  
OR  
BEEF

5  
8-oz.  
Pkgs. **\$1**

ROZELLA FRESH-FROZEN  
**CHEESE**

Strawberry  
Pineapple  
Vanilla

16-oz.  
Pkgs. **59**¢

WONG'S FRESH-FROZEN  
**CANTONESE**

**DINNER**

11-OZ.  
PKG.

**59**¢

**PEAS  
CORN  
BEANS  
TOMATOES**

SPRINGFIELD

INDIAN GEM

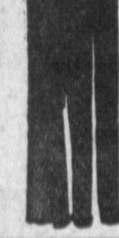
GREEN SPOT  
CUT GREEN

SERRA  
MISSION



16-OZ.  
CANS

**8**



**AVES**

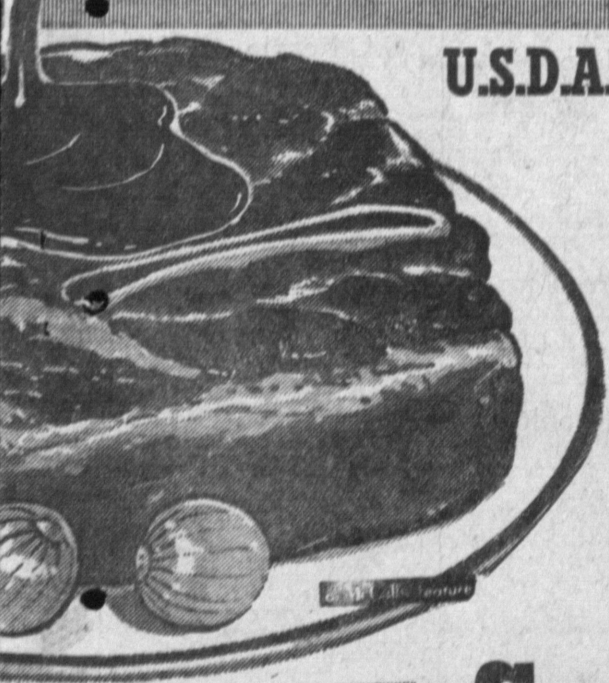
ACH-PINEAPPLE

3  
20-OZ.  
JARS  
**\$1**

U.S.D.A. GRADED CHOICE BEEF

**CHUCK  
POT  
ROAST**

**43**¢ lb.



**Swiss Steak**

THICK CUT  
LEAN & JUICY... SO  
TENDER YOU CAN  
CUT IT WITH A FORK!

**69**¢ lb.

**7-BONE CHUCK STEAK** **55**¢ lb.

**BEEF STEW** BONELESS CUT UP **69**¢ lb.

PLATE BOILING **BEEF** U.S.D.A. CHOICE **25**¢ lb.

**SHORT RIBS** LEAN & MEATY **39**¢ lb.

**GROUND BEEF** FRESH, JUICY **39**¢ lb.

**SLICED  
BACON**

FARMER JOHN **59**¢ lb.

FROZEN YOUNG  
LUMP MEATY

**KEYS**

**HENS**

**39**¢ lb.

**DELICATESSEN**

Wisconsin Natural Big Eye  
**SWISS**

**CHEESE**

**59**¢ lb.

Oscar Mayer  
**LIVER-CHEESE**

**LOAF**

6-oz.  
Pkg.

**35**¢

JUST A REMINDER... WE HAVE EVERYTHING  
YOU NEED IN GLAZED FRUITS FOR YOUR HOLIDAY CAKES



SPECIALS FOR THURS., FRI., SAT., SUN., NOV. 6, 7, 8, 9

**CRENSHAW & RODEO RD.**

OPEN DAILY: 9 A.M. 'TILL MIDNIGHT

We Reserve the Right to Limit Quantities