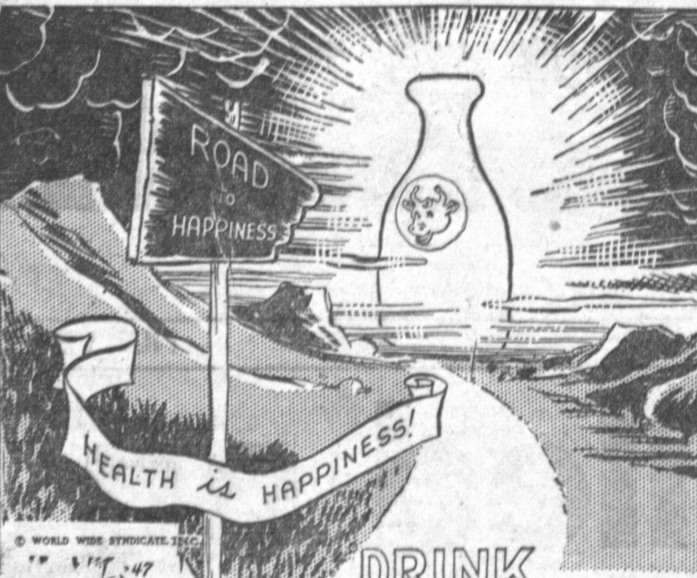


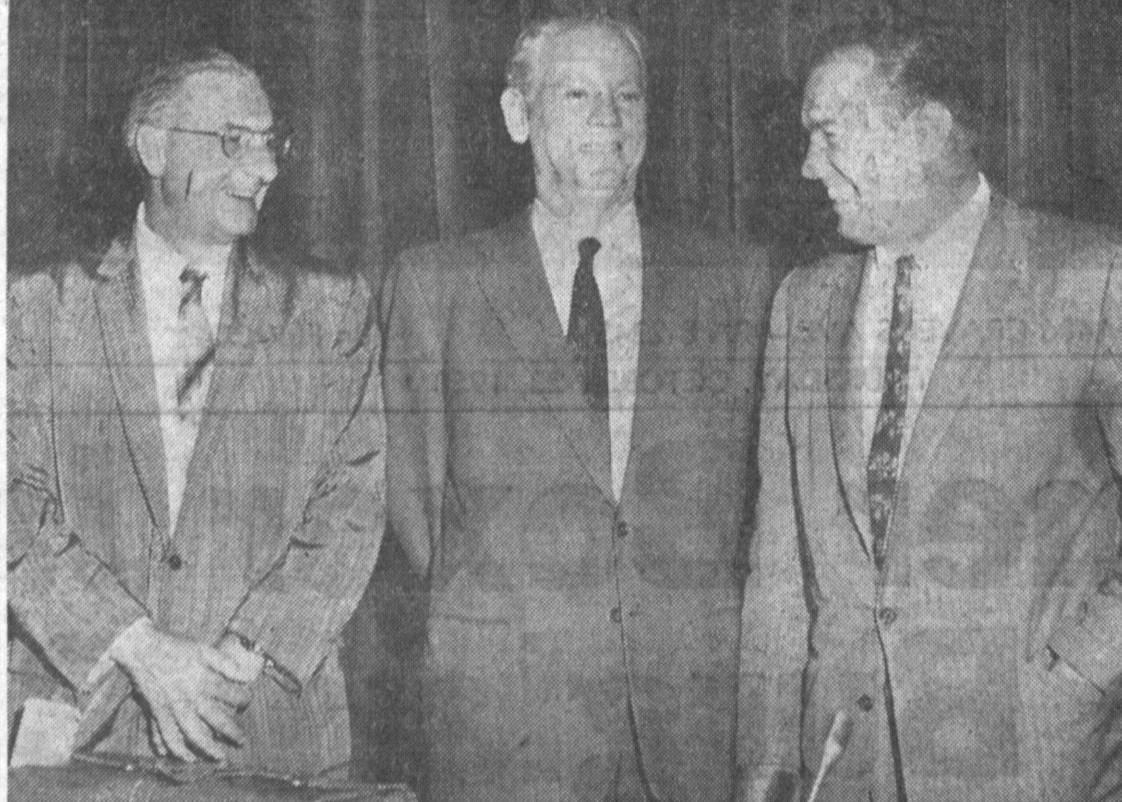
TOP O' THE MORNIN' By Milk-Maid



... and be sure that it comes to you from PALOS VERDES VIEW DAIRY. They offer reasonable prices on all DAIRY PRODUCTS.

"CASH 'N' CARRY" SPECIAL
HOMOGENIZED—PASTEURIZED
MILK GRADE A 19 1/2 Ct.

Palos Verdes View DAIRY
"YOUR DRIVE-IN DAIRY" CASH-CARRY-SAVE
22845 HAWTHORNE BLVD. PHONE FR-58615
TORRANCE



CANDIDATES—John Wallace, right, of sponsoring Chamber of Commerce committee, chats with Congressman Cecil R. King, Democratic incumbent, center, and his Republican opponent, Leonard Di Miceli, during Meet Your Candidates Breakfast Tuesday in Civic Auditorium.

Thomas Discusses Ballot

The pros and cons of the 18 propositions on the November ballot will be discussed today at 8 p.m. by Assemblyman Vincent Thomas. He will explain the State measures at the Lomita Elementary School as guest of the Lomita Registered Voters and Taxpayers Association and the Lomita Civic League.



DUMP FOE—John Wightman, president of the Del Amo Improvement Association, holds nose while sniffing garbage can, to demonstrate opposition to a proposed rubbish and garbage dump in Carson area. In his hand he holds petitions against establishment of the dump. Press Photo

Seek Street Widening

Residents of the area asked Dalemead St., between Tandem Way and Weston Rd., are being investigated this week by the public works department.

Residents of the area asked for another City Council hearing, citing dangers to children because of the narrowness of the street.

Group to Protest Proposed Dump Site

At least 100 residents, backed by more than 1000 petition signatures will protest a zone exception for a rubbish and garbage dump in the Carson area.

"We've got too much to lose to let this happen," declared John Wightman, president of the Del Amo Improvement Association, which will oppose the dump at a hearing before the County Zoning Board Oct. 30 at 10 a.m. The proposed dump will be five blocks long on the west side of Vermont Ave., between 208th and 214th Sts. The zone exception to permit operation of Bert W. Martin, owner of the Berado Corp.

Odors, Rats "We oppose this because of the odor, rats, flies, seagulls, noise and dust, as well as the health hazards which will be suffered by residents," Wightman said.

"In addition, it will reduce the value of our homes, and I for one can't afford it," he added. He said that a new subdivision on the east side of Vermont, overlooking the proposed dump site has just been completed and the landscaping isn't even in.

"We have a nice neighborhood, and some people have paid up to \$18,000 for their homes," Wightman said. "We're not going to let this go by default, we're going to fight to the last ditch."

Special Meeting A special meeting of the association will be held Monday at 7 p.m. in the Stephen White Junior High School, 220th and

Figueron Sts., to map final strategy for the appearance at the hearing.

Wightman said that more than 1000 signatures against the dump were received within a few days after the plans were revealed.

Theatre Directory

ROADIUM DRIVE IN
Opens at 7:00 DA 4-2664
"LIGHT IN THE FOREST"
"ATTILA"
1st Show Starts 6:30 p.m.
2nd Show Starts 8:00 p.m.

GRAND Opens 6:45
Friday, Saturday, Sunday
"OLD YELLER"
"FIGHTING TROUBLE"

STADIUM Open 6:45
Thursday, Friday, Saturday
"ATTACK OF THE PUPPET PEOPLE"
"WAR OF THE COLOSSAL BEAST"

HARBOR DRIVE IN
Opens 7:00 TE 4-8501
Thursday, Friday, Saturday
"FAREWELL TO ARMS"
"QUINTRILL'S RAIDERS"

STADIUM
Now Through Saturday
John Agar in
"Attack of the Puppet People"
— and —
"War of the Colossal Beast"

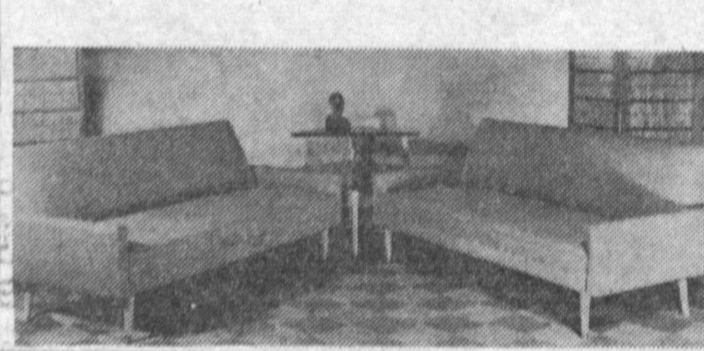
Sun.-Mon.-Tues.
Gene Kelley — Natalie Wood
"Marjorie Morningstar"
In natural color
—together with—
Mickey Rooney
"Andy Hardy Comes Home"

GRAND
Phone FAirfax 8-6500
Fri.-Sat.-Sun.
You'll want to see it again!
Walt Disney's
"Old Yeller"
— plus —
The Bowery Boys in
"Fighting Trouble"
Sat. Mat. only
6 — cartoons — 6

WE MANUFACTURE WHAT WE SELL...



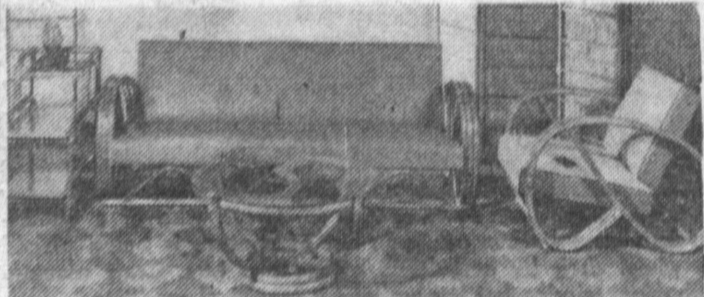
Pagoda Club Chair. 100% foam and reversible cushions. Choice of Scotch guard, tweed, Naugahyde slightly higher. \$59.95



6 ft. SOFA \$69.95
Matching Club Chair . . . \$29.95
Choice of stain & spot resistant Scotch guard tweed, Slightly higher in Naugahyde.



Slim line high back Club Chair. Reversible all foam cushion. Choice of Scotch Guard, Tweed, Naugahyde slightly higher. \$49.95



4 Pc RATTAN SET
3-Strand Rattan sofa & club chair. Large glass top coffee table and step table. Choice of Tropical or Modern prints. Naugahyde slightly higher. \$149.95

CALFRAN
MANUFACTURERS AND IMPORTERS

1523 Redondo Beach Blvd.
Bet. Western & Normandie, Gardena
Open Monday & Friday Eve's 'Til 9, Sundays 1 'Til 5
BUDGET TERMS DA 9-1379

"FIXINS TO GO"
Hours: 11:30 A.M.—8:30 P.M.
Radar Range Cooking
HICKORY STICK BAR-B-Q
3124 Pacific Coast Hwy. 2528 Torrance Blvd. (Near Crenshaw)
Torrance (Walterite) Torrance DA 6-7817
DA 9-0510

TORRANCE PRESS
Established April 15, 1949
Publication office at 1406 Craven Ave., Torrance, California. Plant at 20346 So. Hawthorne Blvd., Torrance, California.
Published Semi-Weekly, Thursday and Monday. Entered as second class matter Oct. 5, 1957, at Post Office, Torrance, California, under act of March 3, 1879. Adjudicated a legal newspaper by Superior Court, Los Angeles County, Calif., Adjudicated Decree No. L. B. 23048, April 8, 1958.
Office: 1406 Craven Avenue Torrance, California
Telephone: FAirfax 8-2345
Plant: 20346 S. Hawthorne Blvd. Torrance, California
Phones: FA 8-2345, FRontier 2-6408
W. R. Zappas, Publisher
W. E. King, General Manager
Kurt Lieberman, Managing Editor
Subscription Rates (Payable in advance)
All manuscripts are submitted at owner's risk. The Torrance Press can accept no responsibility for their return.
Carrier Delivery 5c per Month
Local and Out-of-Town, per Year . . . \$12.00

Tonite, Friday, Saturday

WALT DISNEY'S
"THE LIGHT IN THE FOREST"
TECHNICOLOR
FESS PARKER
WENDELL COREY
JOANNE DODD
JAMES McARTHUR
CAROL LYNDLEY



Also
Anthony Quinn — Sophia Loren
"ATTILA.."
"Technicolor"
ROADIUM DRIVE-IN East of Crenshaw on Redondo Beach Blvd.
*****DA. 4-2664



ESCROW...

WHEN CONFRONTED WITH THE TECHNICAL COMPLEXITIES of buying or selling property, consult an expert...the Escrow Officer at California Bank. All aspects of your real estate transactions will be assured responsible, protective and confidential handling.

California Bank
MEMBER FEDERAL DEPOSIT INSURANCE CORPORATION

ESCROW DEPARTMENT

TORRANCE OFFICE: 1403 SARTORI AVE.

Backyard banquet with
McDonald's
CHEESEBURGERS... 24c
and MILK SHAKES... 24c
You don't need plates... just an appetite and a platter-full of McDonald's tender, juicy Cheeseburgers with creamy-smooth Milk Shakes and golden French Fries. A feast of fun, food and fresh air for the whole family... at extra thrifty prices. How about tonight!
PURE BEEF HAMBURGERS..... 18c
TRIPLE THICK MILK SHAKES..... 24c
FRESH, GOLDEN FRENCH FRIES... 12c
McDonald's speedee drive-ins
OFTEN IMITATED, NEVER DUPLICATED
PLENTY OF FREE PARKING
174th St. & CRENSHAW