

### PTA Presidents Are Entertained

Mrs. David P. Goolsby, president of Narbonne High School PTA, was hostess recently to other presidents of Gateway Council PTA, entertaining in her home at 1828 W 222nd St. Mrs. E. G. Grooms, Council president, urged support of the Milk Bowl football game ticket sale, pointing out that 75 per cent of the proceeds will go to the milk and lunch fund and the remaining 25 per cent to the high school athletic equipment

fund. Games in the Harbor area will be played Oct. 17, with Banning vs. Bell at Banning; Narbonne vs. South Gate at Narbonne; San Pedro vs. Washington at San Pedro. Game time is 3 p.m. Among those attending the president's meeting were Mrs. John Kapu, Milton Johnson, Joseph B. Butler, W. E. Martois, Joe Kobata, Peter Costa Jr., Oscar Smith, and Glade Murchison.



**MILK EXPERT**—Stan Voges of Inglewood Farms holds first place trophy he won in the Class B milk judging event at the Los Angeles County Fair. He won top honors for scoring flavor, quality, sediment and packaging of milk.

Keep These



Choices in mind

and you'll be

## HOT WATER HAPPY

meal after meal after meal!



**1 Choose a Gas Water Heater!**

Gas heats water three times faster... easily keeps ahead of the demands of automatic washing machines, dish washers and growing families. Gas costs less, too.



**2 Choose Right Size!**

Your plumber's approved sizing chart shows the proper size automatic gas water heater for your family. Don't buy an inadequate heater. It overworks—won't last as long nor serve you as well as the right size heater.



**3 Choose Quality!**

One good way to select a quality gas water heater that won't rust is to make sure it carries the Verified Long Life Seal shown here—or insist on a 10-year warranty when you order.

It's easy to buy a new automatic gas water heater. You can give your plumber all the details he needs over the telephone. You may even arrange convenient terms, credit and financing with him over the telephone.

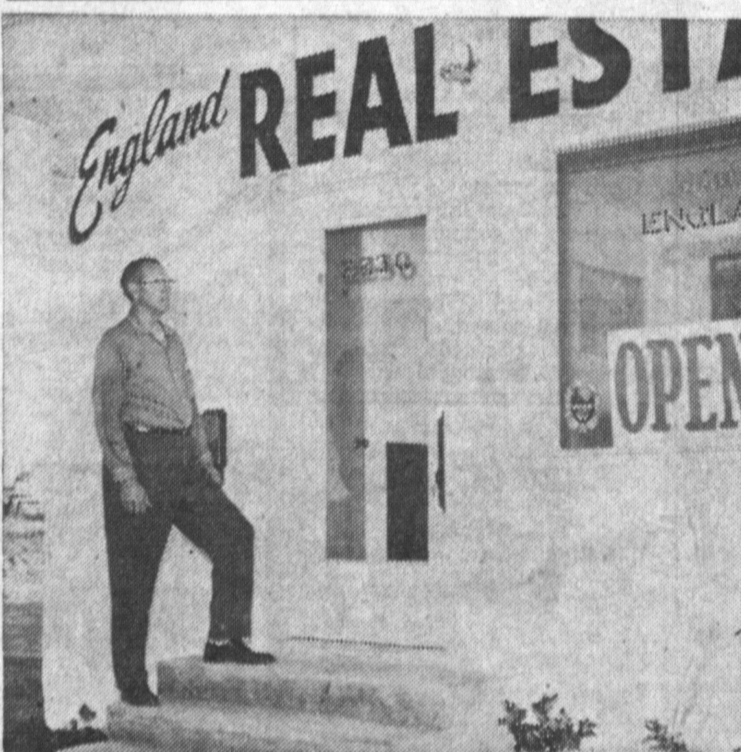


SOUTHERN CALIFORNIA GAS COMPANY

For better living at lower cost.

### Southern California Heats Water with Modern GAS

For modern Gas service beyond our system, see your L-P Gas dealer.



**NEW OFFICE**—Albert Z. England recently opened new real estate office at 2230 Sepulveda Blvd. Both he and his wife, Katherine, have been active in the real estate business in this area for several years. They are members of the Torrance-Lomita Board of Realtors, and Mrs. England is currently treasurer of the Women's Division.

### New Chevrolets to Make 1959 Debut Here with Restyling

The 1959 Chevrolets, dramatically restyled and boasting an array of mechanical improvements, will go on public display at the Chevrolet dealer showroom here Oct. 16. As is customary with the company, the presentation here against a festive background of decorations will be held simultaneously with the introductions at other retail locations across the country.

The new models have been unveiled in secrecy. Advance word from Detroit, however, describes them as "the most unusual in company experience." The passenger body carries a unique design and the cars will reportedly incorporate equally as progressive refinements in the chassis.

Representative models of the entire passenger car line and the 1959 lineup of 139 commercial vehicles are slated for the exhibition here. The "formal" announcement period will continue through the remainder of the week.

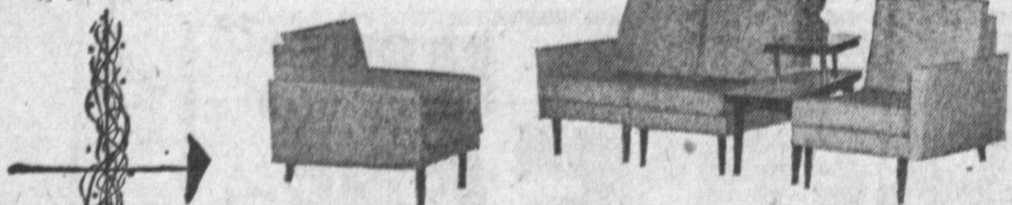
According to Chevrolet, a revision in series identification is planned for passenger cars. The Impalas, introduced with meteoric sales results as part of the Bel Air family a year ago, have been expanded into a complete series. Other models making their debuts will be new Bel Airs, Biscaynes and Station Wagons.

Chevrolet will bring out its new models in the wake of an extensive promotion and advertising campaign. The newspaper schedule alone covers 7,500 dailies and weeklies.

More than 40 per cent of the fatal traffic accidents in rural areas in 1957 involved only one car, says the National Safety Council. The majority of these were accidents in which the car simply ran off the road.

## Calfran Construction

"for the rest of your life"



### Sectional and Club Chair \$39.95 per unit

Expressing the highest quality craftsmanship and construction imaginable at this low price.

- **Reversible Cushions** of rubber base construction—eliminates squeaky springs.
- **Foam Material** is backed with a lifetime manufacturer's guarantee.
- **Hardwood Frame** is guaranteed for life by Calfran.

Choice of many bold and fabrics including leathers and suedes. (Nauyasde 10.00 per unit extra).

## CALFRAN

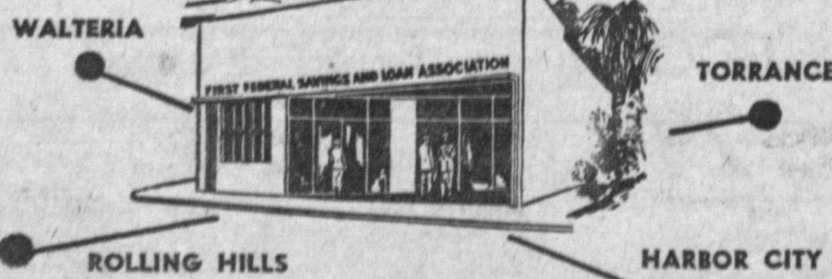
1523 REDONDO BEACH BLVD.

Between Western and Normandie

DA 9-1379 Gardens

DAILY 10 A.M. TO 6 P.M. MON. & FRI., 12 NOON TO 9 P.M.

## all roads lead to... First FEDERAL SAVINGS in Lomita!



The wise family assures itself a better future through a regular savings program at First Federal... and makes saving easier by taking advantage of First Federal's convenient office in Lomita.

First Federal pays the highest earnings consistent with safety and your account is insured to \$10,000 by a permanent agency of the Federal government.

First Federal's Lomita office is easily reached and a free parking lot is maintained to save you time when you save your money. Stop in today and begin your savings program. Open Fridays until six.

**First FEDERAL SAVINGS**  
AND LOAN ASSOCIATION of San Pedro  
IN LOMITA 2233 LOMITA BLVD. (Davenport 6-6143)

# WHAT MAKES IT'S THE...

### 4 BIG SALE DAYS THURS., FRI., SAT., SUNDAY OCTOBER 9, 10, 11, 12

## Durkee May'naise

It's Made From Whole Eggs

24-oz. Reusable Freezer Jar

# 39¢

Deliciously Smooth • Creamy

## Tom Sawyer PEANUT BUTTER

Lge. 16-oz. Jar

# 39¢

## Chili Con Carne

Lge. 40-oz. Can

# 55¢

## KIDNEY BEANS

### Whole Kernel

### Sweet Tender

### WISHBONE IT

## VANO • LIQUID STARCH

Full 1/2-Gal. Btl.

# 39¢

## Dill or Kosher Dill PICKLES

Full 22-oz. Jar

# 29¢

## Glorietta • Elberta Sliced or Halves Peaches

Lge. No. 2 1/2 Can

# 29¢

## PINEAPPLE-GRAPEFRUIT

FARM FRESH PRODUCE

## U. S. No 1 • RUSSET POTATOES

10-lb. Cello Bag

# 29¢



## PIPPIN • Extra Fancy Northern APPLES

Bright Red Pleasingly Tart

# 5¢ lb



## ORANGES

Sweet Valencia

# 12¢



ZEST TOILET SOAP 2 Bars 43¢

ZEST TOILET SOAP 2 Reg. Bars 31¢

NIAGARA • GLOSS STARCH 12-oz. Box 21¢

FOR COFFEE PREAM Regular Jar 31¢