



Back to School Special!
HAIRCUTS

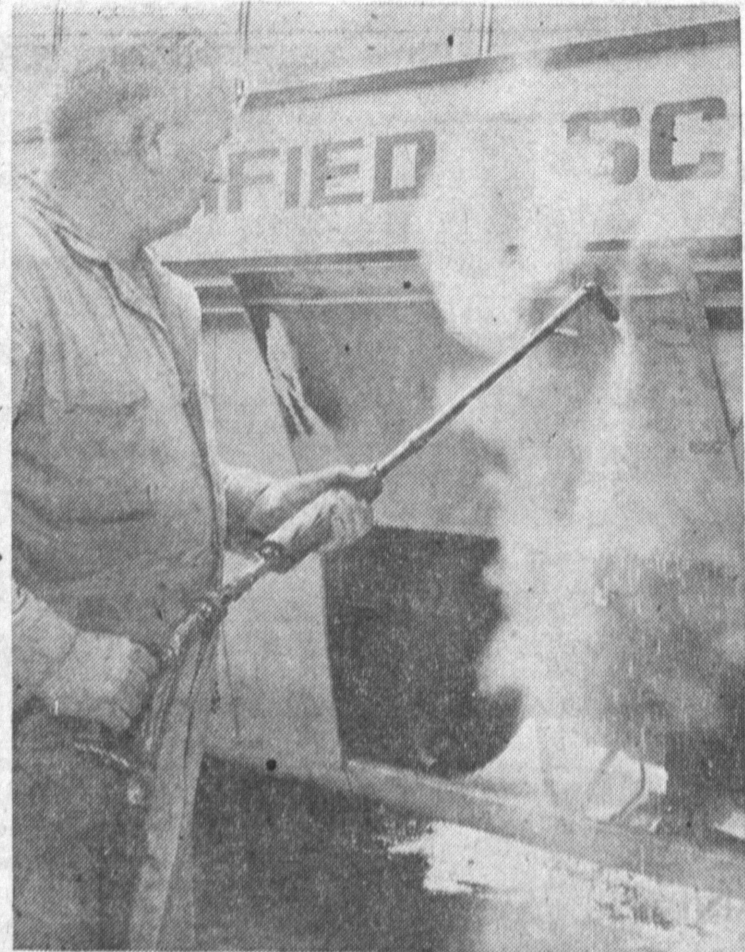
1.05 Men's and Boys
Tues., Wed., Thurs.
ONLY

Crew Cuts, Butches
Flat-Tops, Jelly Rolls \$1.25

OUR SPECIALTY
Monday through
Friday only \$1.25
LADIES HAIRCUTTING

ARAGON'S BARBER SHOP

20826 S. Main St. (Just South of 208th St.)
—Open 7 Days—
Sunday 8:00 a.m. to 4:00 p.m. Monday through Saturday 8:00 a.m. to 8:00 p.m.



CLEAN START—Mechanic Harold Vaughn steam-cleans a bus as part of the maintenance work carried on during summer by Torrance Unified School District.



NEW COAT—Tom Hennemann, a bus driver, who works in the Torrance Unified School District's transportation yard during the summer, takes the stripping off a bus after it was painted during summer.

Hospital Board Meet
Next meeting of the advisory board of the Little Company of Mary Hospital will be held Sept. 23 at the Jump'n Jack Restaurant at noon.
President R. I. Plomert, Jr., announced that board members G. A. Maxwell and Reed H. Parkin have resigned. The Sept. 4 meeting was cancelled.

The Automobile Club of Southern California advises you not to overload the trunk of your car when packing for a vacation. Too much weight in the rear of the automobile affects the balance of the car and tends to point the headlights off the road.

School Buses Back in Shape For Another Year of Service

One of the busiest transportation fleets in Torrance, is getting ready for another year of shuttling passengers.

These are the 18 buses used by the Torrance Unified School District for taking students back and forth to school.

Last year, the coaches drove 308,000 miles, giving 1,103,031 rides to and from school, field trips and transporting athletes. Each bus averaged 14,000

miles during the year, most of them driven over the 70 square miles of Torrance.

The buses have all been idle during the summer vacation months.

Make Repairs

But not so the members of the district transportation department who have been overhauling the vehicles, painting them and making minor repairs.

"We checked them out thoroughly at school's end, and anything that needed it, was repaired," said John Mock, transportation superintendent. He said that the vehicles were thoroughly inspected for defects so that repairs could be made before major breakdowns could occur. This not only keeps the

cost down, but prevents repairs during the busy school schedule, Mock explained.

Annual Inspection

All buses are inspected once a year by the State to make sure that mechanical defects will not cause an accident.

Some buses make as many as eight trips per day transporting students to and from school. Elementary students who live more than 1 1/4 mile from school are eligible for district transportation, and high school students use buses if they live more than two miles from school.

In addition to the buses, the transportation department also does the maintenance on more than 40 other vehicles owned by the school district.

PTA Board Will Host Teachers

Executive board of Flavian School PTA, meeting recently in the home of Mrs. Ralph Reese, decided to be hostesses to their school teachers at a luncheon on September 10. They will ask approval of their association members for a "Harvest of Fun" night October 31.

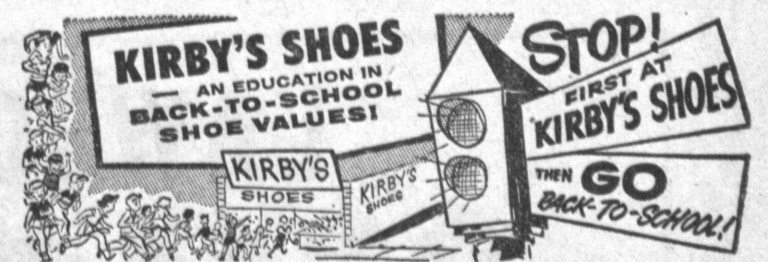
First association meeting of the new year will be held September 18 in the school cafeteria. New teachers at Flavian will be introduced at this time.

The following chairmen have been ratified: Mrs. John Black, parliamentarian; Mrs. Fred Carroll, hospitality chairman; Mrs. Donald Gregor, tea; Mrs. Jack Young, courtesy; Mrs. John Tallon, child welfare; Mrs. Abbott Hatch, Founders' Day; Mrs. James Kocis, music; Mrs. Ralph Reese, character and spiritual education; Mrs. Don Davis, Newsette; Mrs. Melvin Berhoff, outside publicity; Mrs. Fred Hoebel, posters and art; Mrs. B. A. Masterson, room representative; Mrs. Tom Myers, movies; Mrs. Olaf Simengard, parent and family life education; Richard Hess, men's membership; Mrs. Daniel Lombardi, TEAC.

Mrs. J. R. Russell asked members of the program planning committee to her home last Tuesday evening to plan for the coming year. Announcement of their plans will be made at a later date.

NEW PAINT LINE

A new line of flat house paints in vivid colors for use on rough and rustic wood siding, shakes, shingles, etc., popular in modern home and ranch style construction, has been added to the Sun-Proof paint products of Pittsburgh Plate Glass Company, it was announced here today by Guy J. Berghoff, general paint manager of the Company.



"SADDLES"

(AND BUCKS, TOO!)

\$4.98



- SIZES 4 to 10
- NARROW & MEDIUM
- SOFT ELK UPPERS
- GENUINE GOODYEAR WELTS

GIRLS' STRETCH ANKLETS 39¢ 3 PRS. \$1.15
GIRLS' COTTON ANKLETS 4 PRS. \$1.00



2 CONVENIENT LOCATIONS

1276 SARTORI AVE. - Downtown Torrance
22223-5 PALOS VERDES BLVD. (Near Carson)

USE TORRANCE PRESS CLASSIFIED

YOUR CHOICE

2 BIG TOOL BARGAINS

3-PC ALL PURPOSE PLIER KIT OR 3-PC ADJUSTABLE WRENCH SET

USUAL \$3.75 VALUE per set
Only 1.99
PER SET OF 3 LIMITED QUANTITY



Get a set of each for your workshop

- Pair of heavy duty pliers
 - Pair of wire cutters
 - Pair of long nose pliers
- OR
- 1-6" Angle wrench
 - 1-8" Angle wrench
 - 1-10" Angle wrench

The tire chosen as standard equipment on '57-'58 cars
24.75 Deluxe Silvertown TUBELESS
6.70-15 PLUS TAX AND RETREADABLE TIRE
AS LOW AS **1.00** DOWN **1.25** PER WK.

B.F. Goodrich Smileage! starts here

B.F. Goodrich

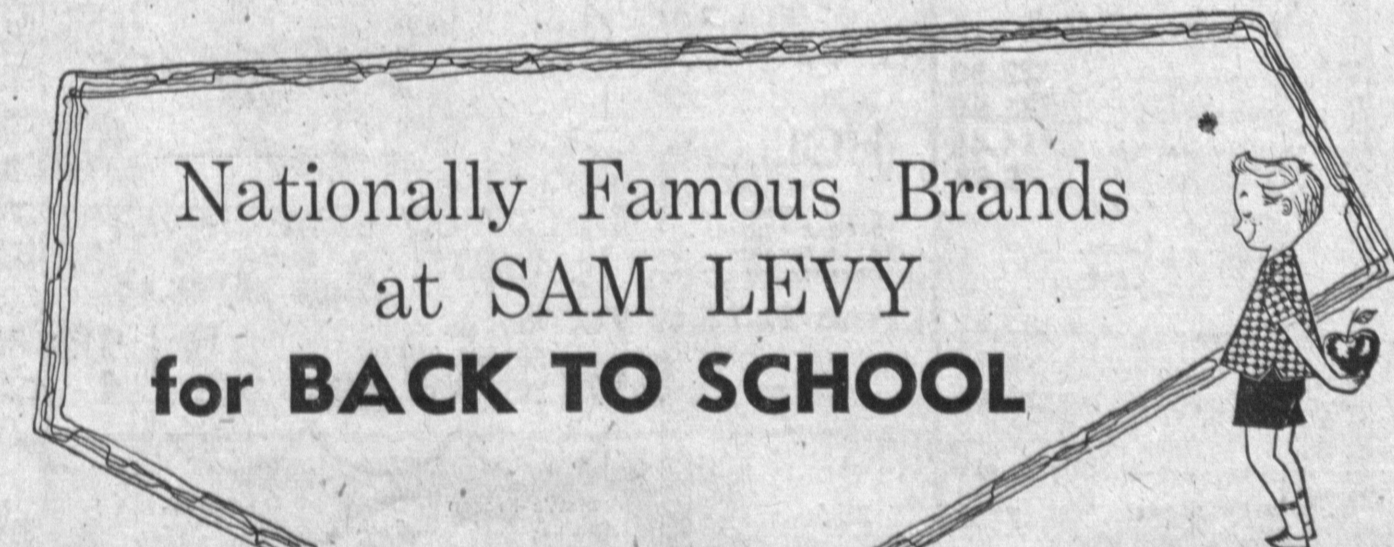
1323 CRAVENS AVENUE DOWNTOWN TORRANCE
FA 8-0220

50¢ CASH
This Ad Worth 50¢ On Any \$2.00 Cleaning Order
Bring Ad With Order
SAV-ON
49¢ - 98¢
DISCOUNT CLEANERS LAUNDRY

Void after Sept. 11
Store No. 21
1116 North Crenshaw Blvd.
(Near Torrance Blvd.)
(Across from Jim Dandy)
Store No. 19
15233 Crenshaw Blvd.

BE AT THE TOP OF THE CLASS...

Nationally Famous Brands at SAM LEVY for BACK TO SCHOOL



FOR HER
• SWEATERS
CATALINA
JANE IRWILL
GLASGOW
LEROY
ELLSON
SEBASTIAN

• SKIRTS
RHODES
CATALINA
BENJAMIN OF HOLLYWOOD

• SPORTSWEAR
BETTY BARCLAY
TABAK
CANDY JONES
JULIE MILLER
ALEXANDER LIPTON
SEBASTIAN
DON LOPER
MINX MODES
CINDERELLA FROCKS

• BLOUSES
LEE MAR
HENDAN

FOR HIM
• SWEATERS
CAMPUS
ARROW
WESTWOOD
GLASGOW
REVERE

• SLACKS
A-1
PEGGERS
LEVI CINCH BACKS
MCGREGOR
PALMDAYL
TOUCHDOWN OF CALIF.

• SPORT SHIRTS
ARROW
HENRY AMBER
BERTOWNE
LANIER OF CALIF.
MCGREGOR
DON JUAN

• KNITWEAR
HARTOG
CALIF. SPORTSWEAR
MAURICE HOLMAN
MILJAS

30-60-90 Day Charge Accounts
No Interest or Charges

1309-15 SARTORI DOWNTOWN TORRANCE
SAM LEVY Everything To Wear
FA 8-2628