

Open Play

EVERY NITE!

Enjoy leisure hours with friends and neighbors throughout the summer evenings at . . .

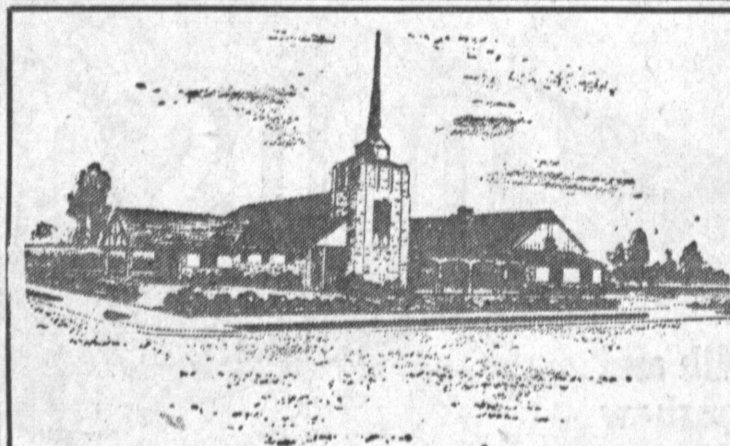


BOWL-O-DROME

220th at Western FA 8-3700

Dynamic Living Class Meets Thursday Night
The Dynamic Living Class of Religious Science teachings will meet at the home of Mrs. Eileen Goetz, 5029 Milne Drive, at 7:30 Thursday evening.

This will be a discussion and meditation period with Wade Havens as leader. All persons interested are cordially invited to attend.



Halverson-Leavell Mortuaries

1223 Cravens, Torrance, Calif. FAirfax 8-1223

New Officers for Sisterhood

The newly elected officers of the Garden Valley Jewish Center Sisterhood were recently entertained at a dessert luncheon at the home of Mrs. Bernard Schwartzberg, publicity chairman.

Officers for the coming year are: Mmes. Morris Greenbaum, president; Charles Price, 1st vice president; Arthur Pickus, 2nd vice president; Max Stern, recording secretary; Harry Cohen, treasurer. Mrs. Seymour Sorashevski is outgoing president. The Sisterhood, Center, men's Club and Teen-Age Group will be held at a dance Saturday night, August 9th, at the G.V.J.C., 14725 S. Gramercy Place, Garden. Installing officer will be Rabbi Kraus.

The Sisterhood is planning an active and well-rounded program for the coming year. Meetings are held the third Tuesday of each month at 8:30 at the Center.

USE CLASSIFIED



THE LIBBEY FAMILY BAND
On Church Program

Family Band to Play at Carnival

The Libbey Family Band, consisting of nine members will be at the Harbor City Four-square Church, 254 and Belle Porte, at 7:30 p.m. Friday. Their performance is scheduled as a highlight of the Youth Revival being conducted by Rev. Harold Hansen. The revival is in its fourth week.

The Libbey family has traveled throughout the United States and only recently returned from a tour in South America. One member plays a duet on the trumpet; the group divides for various musical combinations, a quartet, stringed instrument selections, band music and vocals.

Church Schedules Interesting Topic

"What Mask Are You Wearing?" is the topic scheduled for the 11 a.m. Sunday sermon at the Redondo-Torrance Church of Religious Science. Dr. Earl D. Barnum will offer some suggestions for discovering your "real" person.

Going on the premise that we all mask some of our true feelings, living in a world of masks hidden behind our own private assortment of personalities, Rev. Barnum will discuss methods of "unmasking."

Announcement is made that the usual Wednesday morning inspiration hour and the Thursday evening basic principles class will not meet again until September.

Donations Made to Church Building Fund

First donations to the building fund for the Torrance Science of Mind Church, were the reaction to Rev. Ray Anger's last Sunday evening sermon topic at the YWCA, "As Ye Sow, So Shall Ye Reap." The donations appropriately sowed the seed for the future church home.

A special musical program was presented by members of the choir of the San Pedro Science of Mind Church.

OBITUARIES

FRUITT, Vivian Irene, age 42, of El Segundo, native of Kansas. Services were held at HALVERSON LEAVELL MORTUARY CHAPEL July 14, 1958. Rev. John J. Penner officiated. Interment, Green Hills Memorial Park. Survived by husband, Ernest Fruitt, 2 sons, Richard and Larry Fruitt, 1 daughter, Barbara Ann Johnson, 3 sisters; Mrs. Juamita Timao, Mrs. Lucille Peck, and Mrs. Melvin Gable. Brother, Frank McKay and father, James Meek.

RENFRO, Z. Carl, age 37. Native of Missouri. Services, HALVERSON LEAVELL MORTUARY CHAPEL, July 17, 1958 at 10 a.m. Brother Vincent B. Porcoroba officiating. Burial, Green Hills Memorial Park. Survived by wife, Joan, & 2 daughters, Joan Lee and Jan Elizabeth. Parents Mr. & Mrs. Victor Renfro, Kansas City, Mo.

TEMPLE MENORAH

112 N. Catalina, Redondo Beach
Rabbi, Henri E. Front

Friday Night Religious Services 8:15 p.m.

Religious School—First Methodist Church (Temporary Location)

119 Torrance Blvd., Redondo Beach Saturday, 9:00 A.M.

Phone FR 9-5983 or FR 5-6620

Sisterhood Meetings Every Fourth Monday, 8:30 P.M.

Temple Meetings Every Third Wednesday, 8:30 P.M.

Hawthorne Widening
An agreement for the widening of Hawthorne blvd. by 14 feet on the east side between Sepulveda blvd. and Carson st. has been reached with the State Division of Highways.

WHAT IS IMPORTANT In Life?
MONEY
LAND
HEALTH
FRIENDS
CHRIST MEANS NEW LIFE

8 a.m. Worship service
9:30 a.m. Graded Sunday School Classes
10:45 a.m. Worship Service
6:30 p.m. Fellowship Groups for all ages
7:30 p.m. Evangelistic hour
Pastor preaching all services

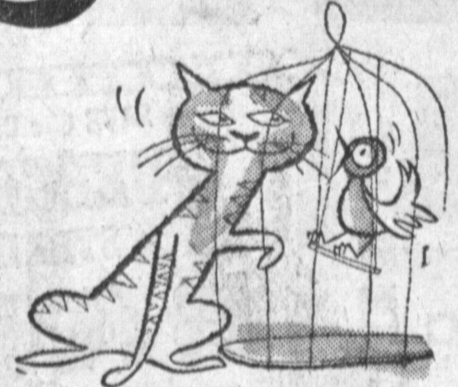
First BAPTIST CHURCH
2118 CARSON STREET
Morgan Gates, Pastor

INTRODUCTION Sale!

We'd Give You The Shirt Off Our Back To Get Acquainted!

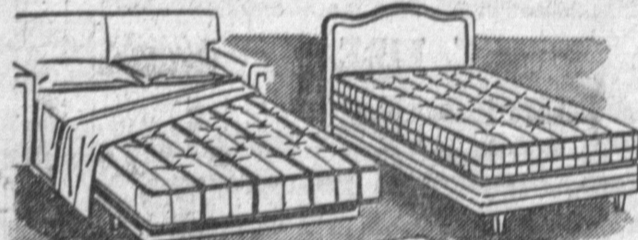
FRIENDLY wants to get friendly with you—even while we're still bringing in furniture and decorating our new Torrance store, we want you to drop in and say "Hello." To give you a little idea of the bargains to expect from us we brought in some closeouts from our L.A. and Hawthorne stores.

P.S. You'll be amazed at the transformation we've made in this old shack!



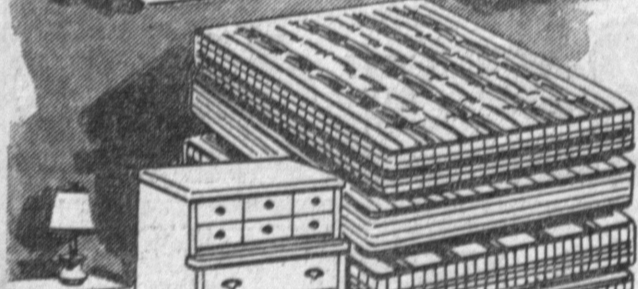
SAVE UP TO 50%

STARTS THURSDAY, JULY 17th
EASIEST TERMS ANYWHERE
OUT-OF-STATE CREDIT IS 'O.K.' HERE!



2-PC. BED DIVAN SET
Divan opens to sleep two. Matching club chair. Choice of fabrics and colors—but just a few sets at this low price! **\$59.50**

SINGLE BED OUTFIT
Includes twin size innerspring mattress and box spring on legs, with plastic headboard. **\$39.50**

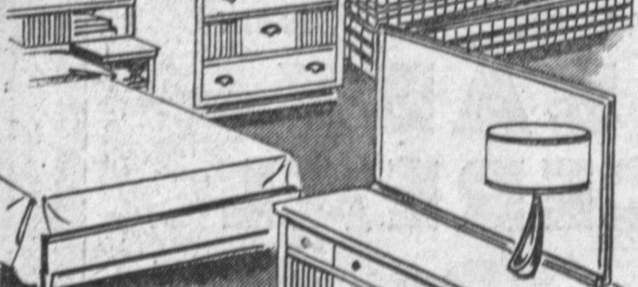


Sealy Golden Sleep MATTRESS
\$38.88

Made to sell for \$59.50. This is the lowest price ever for a Button-Free mattress . . . The Buy of a Lifetime!

Step & Coffee Tables
\$1.00 Each
VALUES UP TO \$25.00

These are close-outs, trade-ins and repossessions in Blonde, Walnut, Mahogany, Maple, etc.



4-pc. BEDROOM SET
\$39.95

Includes Double Dresser and Mirror, Bookcase Headboard, Formica tops on all pieces. A Real Buy!

BUNK BED OUTFIT
\$49.50

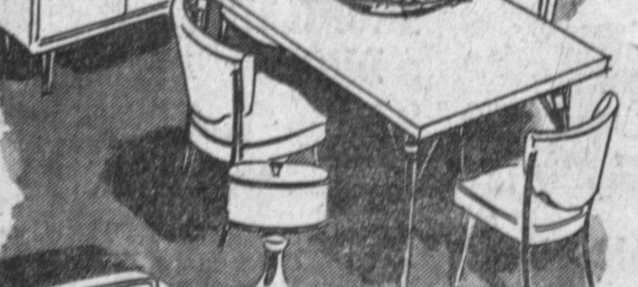
• 2 Wood Bunks • 2 Springs
• 2 Mattresses • Guard Rail & Ladder
Sturdily built of selected woods. The kids love them, either as two-tier bunks or as twin beds.



5-pc. DINETTE
\$36.66

Includes extension table and 4 upholstered chairs.
ODD DINETTE CHAIRS
Wood, Chrome, Wrought Iron
\$1.00 each

THROW RUGS
\$1.00 Each
VALUES TO \$12.95
Brand new. All sizes. Braided, Tweeds, Axminsters, etc.



10-Pc. LIVING ROOM GROUP
\$89.50

• Bed Divan • Coffee Table
• Club Chair • 2 Lamps & Shades
• 2 Step Tables • 9x12 Rug
Modern styling. Completely furnish your living room. Choice of decorator colors. Bed divan sleeps two.

FREE PARKING IN REAR

We carry all major TV and Appliances—Also reconditioned Appliances at "Give Away" prices

FRIENDLY FURNITURE



2067 TORRANCE BLVD.

Phone FA 8-0930

Daily . . . 9 a.m. to 6 p.m.
Mon. & Fri. 9 a.m.-9 p.m.

NEED GLASSES?

Do your eyes tire easily when you read or watch TV? Perhaps you need glasses or your present lenses need changing! An examination will determine if your vision is faulty. If you do not need glasses, we will tell you. Should vision correction be advisable, we can supply you with the type of glasses that will provide maximum comfort. Our prices are moderate; easy terms. Come in soon.



- ★ 31 Years in Harbor Area
- ★ Open Fridays Until 7:00
- ★ Saturdays Until 1:00
- ★ Liberal Credit Terms
- ★ Pensioners Welcome

DRS. SOSS AND KLINE OPTOMETRISTS

1268 Sartori, Torrance
Phone FA. 8-6802
37 Pine Ave., Long Beach
Phone HE. 5-6219
810 Avalon, Wilmington
Phone TE. 4-5464

LADERA GARDEN SHOP

Do-It-Yourself Landscape Plan

-AVAILABLE TO THE PUBLIC ANYTIME DURING THE YEAR WE PLAN-YOU PLANT

Right! We are happy to announce this new idea to Southland home owners. Now it's possible to landscape your home completely and be assured of professional results, at surprisingly low cost to you! . . . HERE'S HOW IT WORKS: A Ladera Landscape designer submits to you a complete plot plan scale drawing of your home, showing the exact number and type of plants needed to give your home that professional landscaped look. Each plot plan is designed to suit the needs and desires of the home owner, the type of soil, sprinkler systems, and architectural style of the home. THERE IS ABSOLUTELY NO CHARGE FOR THIS SERVICE! We then select the appropriate plants and materials from our excellent nursery stock (or you may make your own selection). The complete "landscaping package" will be delivered to your home, ready for planting.

The Average Home Owner Will Save 50% with this convenient Landscape Plan

CAN'T 'DO-IT-YOURSELF'? THEN WE'LL DO IT FOR YOU

A carefully planned landscaping program does much to enhance the beauty of your property. See us today about our . . . "Do-It-Yourself" Landscape Plan

And Here's More Good News . . . Your Landscaping May Now Be Bank Financed with Low Payment Plans

FOR FAST INFORMATION, CALL DAVenport 6-4416 . . . One of our landscape designers will be happy to call on you!

LADERA GARDEN SHOP

24234 CRENSHAW BOULEVARD TORRANCE, CALIF.

Member of California Ass'n of Nurserymen
State Licensed Landscape Contractors