

Automobiles for Sale 200 Automobiles for Sale 200 Automobiles for Sale 200

DEAR CUSTOMER:

Perhaps you've looked out your window recently, seen your neighbor pull up in a shiny new car and said something like this to yourself, "Hey, I'm making more money than he is, have one less dependent, and I can't afford the payments on the old car I'm driving now—what gives?"

Well, folks, maybe Fred has just taken advantage of Hollywood Park Plymouth's famous family budget formula. Let's take a typical case for an example. Mr. and Mrs. T. had the following schedule of monthly payments:

★ 1953 Automobile	\$57.00 mo.
★ Carpets	\$29.00 mo.
★ TV Set	\$16.43 mo.
★ Dental Loan	\$18.06 mo.
★ Finance Company (personal)	\$22.46 mo.
★ TOTAL	\$139.95 mo.

Mr. T. held a good job, making \$400 per month, but with the above payments in addition to his basic living expenses, he was in no position to buy a new car—until our friendly budget counselor at Hollywood Park Plymouth, N. D. Brown, met them. Arrangements were made to pay off all of Mr. and Mrs. T.'s obligations, and put them into a 1958 Plymouth hardtop coupe and leave them the following schedule:

★ Payment on 1958 Plymouth Hardtop	\$66.00 mo.
★ Budget Formula Payment	\$32.00 mo.
★ TOTAL	\$98.00 mo.

With no money down, on approved credit, Mr. Brown actually sold them a new Plymouth and reduced their monthly payments by \$41.95! Sounds amazing? IT IS!

Let us show you what we can do in your case with absolutely no obligation. Simply call ORchard 4-5270 or come in to Hollywood Park Plymouth Motors in Inglewood and let us submit a budget auto plan for your approval.

Sincerely,

N. D. BROWN, Budget Counselor.

THE ABOVE BUDGET FORMULA ALSO APPLIES TO OUR HUGE SELECTION OF USED CARS

THIS WEEK'S USED CAR SPECIALS

'57 Plymouth . . . \$1995 <small>Belvedere Sport Coupe, toust, trans., W.W., etc.</small>	'52 Ford . . . . \$395 <small>R&amp;H, automatic transmission, 2-door sedan.</small>
'56 Chevrolet . . . \$1495 <small>Bel-Air Hardtop, R&amp;H, with standard transmission.</small>	'55 Plymouth . . \$1095 <small>Belvedere Hardtop, R&amp;H, automatic transmission.</small>
'53 Olds . . . . . \$595 <small>R&amp;H, black and white, 4-door sedan.</small>	'56 Ford . . . . . \$1283 <small>Town Sedan, auto, trans., power steering, R&amp;H.</small>

THE PLACE TO BUY NOW IS

HOLLYWOOD PARK

PLYMOUTH-DE SOTO DEALER

830 South La Brea in Inglewood

OR 4-5270

Open Evenings and Sunday 'Til 10:00

CARL'S CLEARING CORNER

FOR CLEAN USED CARS, PRICED RIGHT!

1951 Hudson . . . . \$149	1954 Pontiac . . . . \$895 <small>Catalina, R&amp;H, automatic.</small>
1950 Nash . . . . . \$120	1955 Chrysler . . . \$1495 <small>Newport Hardtop, R&amp;H, P.S., w.w. tires.</small>
1952 Ford . . . . . \$295	1956 Chevrolet . . \$1595 <small>Bel-Air 2-door H. T. R&amp;H, automatic.</small>
1954 Plymouth . . . \$695	1957 Plymouth . . . \$1795 <small>V-8 4-door, R&amp;H, automatic.</small>
1953 Chrysler . . . \$695	1954 Ford . . . . . \$845 <small>R&amp;H, automatic.</small>

TRANSPORTATION SPECIALS

1950 Dodge . . . . . \$85
1949 Lincoln . . . . . \$85

100% FINANCING

Over 150 Cars to Choose from

Carl's Motor Co.

Chrysler-Plymouth Dealer

425 WEST ANAHEIM • WILMINGTON • TE 5-3133

Suburban Motors

- RENAULT
- DAUPHINE
- BORGWARD
- ISETTA 300-400
- ENGLISH
- M. G.
- FORD
- AUSTIN
- SUNBEAM
- HEALY
- RAPIER
- MORRIS
- HUSKIE

WHERE SERVICE COMES FIRST!

ALL CARS CARRY 36,000-MILE GUARANTEE  
AUTHORIZED FACTORY FOREIGN CAR DEALER  
TE 4-8595  
445 E. ANAHEIM, WILMINGTON

Chevrolet 1956 V-8 Convertible

Has factory Continental kit, big radio, heater, gas saving overdrive, custom chromium wheel-tire and many other extras. It's a one-owner well kept and serviced car—The kind you have been searching for! Come and inspect it whether you buy or not. BIG SALE. PRICED DIRT CHEAP. \$99 down and small easy payments through bank. Liberal trade and free 7-day trial exchange. BOB BEAVER PONTIAC, 800 Pac. Coast Hwy., Hermosa, PA 4-9211. Open Sunday.

Chevrolet '55 Sedan \$799 Full Price

Fully factory equipped with heavy duty tires and other extras. Come and inspect it whether you buy or not. You are always welcome. BIG SALE. \$799 FULL PRICE. \$99 down, bank financing and liberal trade. BOB BEAVER PONTIAC, 800 Pac. Coast Hwy., Hermosa, PR 4-9211. Open Sunday.

Hudson 1954 Sedan \$599 Full Price

Has Hydramatic, big radio, heater and other extras. Here's style, class and distinction with 25 miles per gallon economy, speed and power to burn. Come and inspect it whether you buy or not. \$99 down and about \$5 per week through bank. Free 7-day trial exchange and liberal trade. BOB BEAVER PONTIAC, 800 Pac. Coast Hwy., Hermosa, PR 4-9211. Open Sunday.

Automobiles for Sale 200

★ 50 ★  
1958 Pontiacs

- Executive Cars
- Brass Hats
- House Cars
- New Cars

Sacrifice Prices

CHECK YOUR OWN TRADE ALLOWANCE

CADILLACS

'49 CADILLACS	we allow \$1150
'50 CADILLACS	we allow \$1225
'51 CADILLACS	we allow \$1300
'52 CADILLACS	we allow \$1375
'53 CADILLACS	we allow \$1450
'54 CADILLACS	we allow \$1525
'55 CADILLACS	we allow \$1600
'56 CADILLACS	we allow \$1675

CHEVROLETS

'49 CHEVROLETS	we allow \$900
'50 CHEVROLETS	we allow \$975
'51 CHEVROLETS	we allow \$1050
'52 CHEVROLETS	we allow \$1125
'53 CHEVROLETS	we allow \$1200
'54 CHEVROLETS	we allow \$1275
'55 CHEVROLETS	we allow \$1350
'56 CHEVROLETS	we allow \$1425
'57 CHEVROLETS	we allow \$1500

CHRYSLERS

'49 CHRYSLERS	we allow \$900
'50 CHRYSLERS	we allow \$975
'51 CHRYSLERS	we allow \$1050
'52 CHRYSLERS	we allow \$1125
'53 CHRYSLERS	we allow \$1200
'54 CHRYSLERS	we allow \$1275
'55 CHRYSLERS	we allow \$1350
'56 CHRYSLERS	we allow \$1425
'57 CHRYSLERS	we allow \$1500

DE SOTOS

'49 DE SOTOS	we allow \$925
'50 DE SOTOS	we allow \$975
'51 DE SOTOS	we allow \$1025
'52 DE SOTOS	we allow \$1075
'53 DE SOTOS	we allow \$1125
'54 DE SOTOS	we allow \$1175
'55 DE SOTOS	we allow \$1225
'56 DE SOTOS	we allow \$1275
'57 DE SOTOS	we allow \$1325

DODGES

'49 DODGES	we allow \$900
'50 DODGES	we allow \$975
'51 DODGES	we allow \$1050
'52 DODGES	we allow \$1125
'53 DODGES	we allow \$1200
'54 DODGES	we allow \$1275
'55 DODGES	we allow \$1350
'56 DODGES	we allow \$1425
'57 DODGES	we allow \$1500

FORDS

'49 FORDS	we allow \$900
'50 FORDS	we allow \$975
'51 FORDS	we allow \$1050
'52 FORDS	we allow \$1125
'53 FORDS	we allow \$1200
'54 FORDS	we allow \$1275
'55 FORDS	we allow \$1350
'56 FORDS	we allow \$1425
'57 FORDS	we allow \$1500

HUDSONS

'49 HUDSONS	we allow \$875
'50 HUDSONS	we allow \$925
'51 HUDSONS	we allow \$975
'52 HUDSONS	we allow \$1025
'53 HUDSONS	we allow \$1075
'54 HUDSONS	we allow \$1125
'55 HUDSONS	we allow \$1175
'56 HUDSONS	we allow \$1225
'57 HUDSONS	we allow \$1275

LINCOLNS

'49 LINCOLNS	we allow \$950
'50 LINCOLNS	we allow \$1000
'51 LINCOLNS	we allow \$1050
'52 LINCOLNS	we allow \$1100
'53 LINCOLNS	we allow \$1150
'54 LINCOLNS	we allow \$1200
'55 LINCOLNS	we allow \$1250
'56 LINCOLNS	we allow \$1300
'57 LINCOLNS	we allow \$1350

MERCURYS

'49 MERCURYS	we allow \$975
'50 MERCURYS	we allow \$1025
'51 MERCURYS	we allow \$1075
'52 MERCURYS	we allow \$1125
'53 MERCURYS	we allow \$1175
'54 MERCURYS	we allow \$1225
'55 MERCURYS	we allow \$1275
'56 MERCURYS	we allow \$1325
'57 MERCURYS	we allow \$1375

NASHES

'49 NASHES	we allow \$875
'50 NASHES	we allow \$925
'51 NASHES	we allow \$975
'52 NASHES	we allow \$1025
'53 NASHES	we allow \$1075
'54 NASHES	we allow \$1125
'55 NASHES	we allow \$1175
'56 NASHES	we allow \$1225
'57 NASHES	we allow \$1275

OLDSMOBILES

'49 OLDSMOBILES	we allow \$900
'50 OLDSMOBILES	we allow \$975
'51 OLDSMOBILES	we allow \$1050
'52 OLDSMOBILES	we allow \$1125
'53 OLDSMOBILES	we allow \$1200
'54 OLDSMOBILES	we allow \$1275
'55 OLDSMOBILES	we allow \$1350
'56 OLDSMOBILES	we allow \$1425
'57 OLDSMOBILES	we allow \$1500

PACKARDS

'49 PACKARDS	we allow \$900
'50 PACKARDS	we allow \$975
'51 PACKARDS	we allow \$1050
'52 PACKARDS	we allow \$1125
'53 PACKARDS	we allow \$1200
'54 PACKARDS	we allow \$1275
'55 PACKARDS	we allow \$1350
'56 PACKARDS	we allow \$1425
'57 PACKARDS	we allow \$1500

PLYMOUTH

'49 PLYMOUTH	we allow \$900
'50 PLYMOUTH	we allow \$975
'51 PLYMOUTH	we allow \$1050
'52 PLYMOUTH	we allow \$1125
'53 PLYMOUTH	we allow \$1200
'54 PLYMOUTH	we allow \$1275
'55 PLYMOUTH	we allow \$1350
'56 PLYMOUTH	we allow \$1425
'57 PLYMOUTH	we allow \$1500

PONTIACS

'49 PONTIACS	we allow \$825
'50 PONTIACS	we allow \$875
'51 PONTIACS	we allow \$925
'52 PONTIACS	we allow \$975
'53 PONTIACS	we allow \$1025
'54 PONTIACS	we allow \$1075
'55 PONTIACS	we allow \$1125
'56 PONTIACS	we allow \$1175
'57 PONTIACS	we allow \$1225

BOB BEAVER PONTIAC

Authorized Direct Factory Dealer for the Entire South Bay Area

931 PACIFIC COAST HWY. AT 10TH ST. Hermosa Beach—FR 4-3443

OPEN DAILY & SUNDAY 7:11 to 10 P.M.

\*Subject to model and condition of your trade-in on new BONNEVILLE CONVERTIBLE Full Equipment

Automobiles for Sale 200 Automobiles for Sale 200 Automobiles for Sale 200 Automobiles for Sale 200 Automobiles for Sale 200

# WHY HILLMAN?

THE CAR AS NEW AS TODAY IN EVERY WAY

- SAFEST CAR ON THE ROAD
- STYLING OF TOMORROW
- GREATEST PERFORMANCE
- UNBELIEVABLE ECONOMY

Here's How the Experts rate the Brilliant New 1958 HILLMAN:

POPULAR SCIENCE: "In the opinion of the writer, the Hillman—at the price—probably is the best buy among the more popular foreign cars selling under \$2000."

CAR LIFE: "The Hillman 4-door Estate Wagon's combination of Americanized styling, ample performance and elegant comfort gives it Car Life's BEST BUY AWARD."

MOTOR TREND: "An excellent choice as a small car for the one-car family. More power from a sturdier engine—speed and acceleration to cruise easily at highway speeds. Durable, service and parts facilities readily available. Doors close solidly and unit construction body should remain rattle-free. Even six-footers can find leg room to ride comfortably."

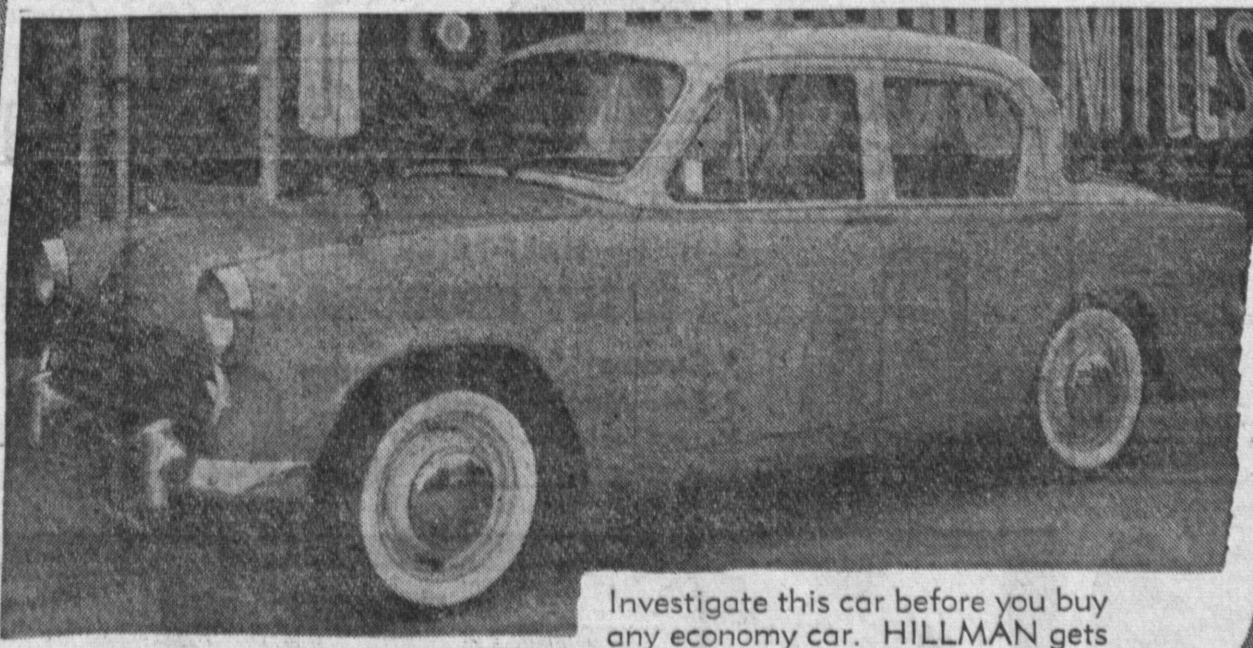
MOTOR LIFE: "The four-speed floor shift is a little gem. Economy . . . good in all types of traffic and driving conditions. Should have wide appeal with those interested in smaller initial cash outlay."

SPORTS ILLUSTRATED: "For value, we pick the Hillman Husky (\$1685) as a utility car." Now . . . visit your Hillman-Sunbeam dealer for a test drive. See for yourself that Hillman has the most power and acceleration in its class, ample room for you and your family, and trunk space for vacation luggage, too. Five models to choose from: 4-door sedans, sports convertible, 2 and 4-door station wagons . . . from \$1685.

NEW HILLMAN OFFERS:

MANUMATIC TRANSMISSION

(NO CLUTCH PEDAL)



Investigate this car before you buy any economy car. HILLMAN gets 35 miles per gallon!

NO MONEY DOWN!  
on approved credit

THE AMAZING HILLMAN

for as Low as \$1685 FOR A FIVE-PASSENGER CAR \$50 A MONTH

BRAND NEW MANAGEMENT

NEW OWNER: MR. E. G. GALLAGHER

A QUALITY DEALER BY SATISFYING THE CUSTOMER WITH

SALES AND SERVICE

YES . . . WE TRADE FOR DOMESTIC CARS

MANHATTAN MOTORS INC.

2301 SEPULVEDA, MANHATTAN BEACH FA 1-2424 - FR 2-1142  
AFTER WE SELL, WE SERVE—OPEN 9 TO 9—SEVEN DAYS A WEEK