

AUTO REPAIRING 1930 AUTO REPAIRING 1935

Open Sunday 11 'til 4
WELL EQUIPPED CLEAN SHOP

ACTION -- AUTOMOTIVE
NO MONEY DOWN — COURTESY CARS
One Day Service—Credit Cleared by Phone

Motor Overhaul... \$65
6 CYLINDER, MOST 5 CYLINDER, 375

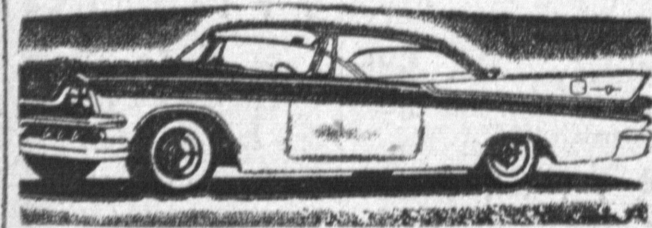
Rebuilt Motor... \$159
INSTALLED, PARTS AND LABOR, MOST CARS

Auto. Transmission... \$62.50
OVERHAULED, PARTS AND LABOR, MOST MODELS
ADJUSTMENT—\$4.50 (MOST CARS)
NEW ENGINE GUARANTEE
467 S. Market—Inglewood

OR. 8-7724 32 YEARS IN BUSINESS

AUTOMOBILES 200 • AUTOMOBILES 200 • AUTOMOBILES 200
FOR SALE FOR SALE FOR SALE

YOU TOO



can drive a late model car

STATION WAGONS

- 1955 CHEVROLET 4-Door, R&H, overdrive.
- 2—1955 FORD 4-doors, R&H, automatic trans., 8 passenger.
- 1954 PLYMOUTH, R&H, straight trans.
- 1953 PLYMOUTH, R&H, straight trans. These Wagons are in tip-top condition.

PASSENGER CARS

- 1956 DODGE V-8, 4-door, R&H, pushbutton trans. 3 to choose from
- 1955 PLYMOUTH 4-door V-8, R&H, o-dr.
- 1952 CADILLAC 4-door, R&H, auto trans. Full power.
- 1955 DODGE V-8, hardtop, R&H, auto trns. Many more 4 door hard tops and club coupe. All Makes and models.

TRUCKS

- 1954 DODGE 2-ton.
- 1953 CHEVROLET 1/2-ton flat bed.
- 1951 CHEVROLET 1/2-ton pickup.
- 1952 CHEVROLET Panel.

Other lower priced P.U. and Transportation cars.

TOM ROADY

AT THE
BIG DODGE-PLYMOUTH CORNER
in Gardena
165th Pl. and South Vermont
Used Cars DA 4-7906—New Cars DA 4-1108

\$50.00 DOLLARS
Over Bluebook Wholesale

Make, Equipment and License No. Listed

**'NO GIMMICK
'EXAMPLE'**

- 1953 PONTIAC**
Custom 4-door sedan, Hydramatic, R&H, W/W, Lic. No. GDB 136 — 9450 Blue Book, and \$50, total \$475.
- 1956 MERCURY MONT.**
Hard top coupe, Lic. No. QKX790. More-a-matic, Radio and heater, white sidewalls. Power brakes.
- 1956 BUICK SPECIAL**
Convertible, Lic. No. JEW 366. Dynaflow, power steering, power brakes, radio, heater, white sidewalls.
- 1956 CHEVROLET**
2-Door sedan hardtop, Lic. No. CPO 376, OKU 873. 2 to choose from: Powerglide, R&H, white sidewalls.
- 1956 CADILLAC**
Sedan DeVille, License No. MUC 989. Hydramatic, R&H, white sidewalls, power steering and brakes.
- 1956 FORD**
Fordson Victoria 2-door sedan, Ford-a-matic, R&H, Power steering, white sidewalls, Lic. No. BCJ 691.
- 1955 FORD**
Station Wagon, Lic. No. KBJ 870. Overdrive, R&H, W/W.
- 1955 PLYMOUTH**
Three to choose from. Lic. No. JHL 837. 2-Door Sedan hardtop, 4-Door Sedan 127 167. Factory equipped. Many extras.
- 1953 BUICK**
Special Riviera hardtop, Lic. No. 16V 414. Dynaflow, R&H.

We are Torrance Trading Stamps on All Used Cars Sold
You check Blue Book and add \$50. Drive and Compare Prices
All Cars Carry a Used Car Warranty

Many More to Choose From—All Makes

12 MONTHS OR 700 MILES WARRANTY AVAILABLE

HERMAN MILLER

PLYMOUTH
THE MOST DEPENDABLE NAME IN THE BUSINESS
1311 CABRILLO, TORRANCE
FA 8-4014

Link Yourself

TO A

REAL BUY

OK

GUARANTEED

USED CAR



BROKAW

CHEVROLET

2901 Pac. Coast Hwy.
Hermosa Beach
FR 2-1151

Chevrolets



USED CARS & TRUCKS

Are BETTER 6 WAYS!

1. Thoroughly Inspected
 2. Reconditioned for Safety
 3. Reconditioned for Performance
 4. Reconditioned for Value
 5. Honestly Described
 6. Warranted in Writing
- '53 Chev. \$4951
Hardtop, 2-tone paint, R&H, power side, good condition.
 - '53 Buick \$595
2-door Special, Radio, heater, Beautiful 2-tone paint. A real clean car.
 - '53 Chev. \$645
Bel-Air, Radio, heater, original paint, new seat covers. You must see this one.
 - '53 Chev. \$445
'210' 4-door, Radio, heater.
 - '54 Pontiac \$1045
Catalina Hardtop Star Chief. Here is a low mileage car with power steering, power heater, radio, heater, full leather interior, orig. paint.
 - '54 Ford \$995
Custom 2-door Station Wagon, Fordomatic, original fire green finish, w/w tires, full leather seats. This car shows a lot of care.
 - '54 Mercury \$895
2-door automatic, Radio & heater, original paint. Looks and runs like new.
 - '55 Buick \$1295
Riviera Coupe, R&H automatic, w/w tires, Beautiful Black finish. A real buy at only \$1295.
 - '55 Chev. \$1295
Station Wagon, power side, R&H, original finish. A real nice car. 5 to choose from.
 - '55 Chev. \$1295
Bel-Air 4-door, Beautiful 2-tone paint, R&H, power side, w/w tires, one you must drive to appreciate. Looks and runs like new.
 - '55 Mercury \$1595
Montclair Hardtop, Beautiful jet black with w/w tires, R&H, power steering, power brakes, full leather interior. Shows lots of care.
 - '55 Olds. \$1595
Holiday Coupe, Beautiful 2-tone paint, Radio, heater, w/w tires, power steering. Must see to appreciate.
 - '56 Chev. \$1095
'210' 2-door sedan, R&H, sold and serviced by us since new.
 - '56 Ford \$1495
Fairlane, 4 door, 2-tone, Cream and white finish, w/w tires, radio, heater, 7-speed interior. Look this one over.
 - '57 Chev. \$1895
R&H, so clean it still smells new.
 - '57 Ford \$2195
Fairlane 600 Hardtop, R&H, Ford-o-matic, w/w tires, power steering, 3rd row, same looks and runs like new.
 - '53 Chev. \$695
1/2 pick-up, like new.
 - '53 Chev. \$1095
14' Stake 7th w/w 8 ply rubber ready to work.
 - '55 Ford \$995
1/2 ton EC, overhauled engine, looks and runs like new.
 - '54 Chev. \$795
Sold and serviced by us since new. Real nice.
 - '51 Chev. \$195
1/2 ton P.U.
 - '52 G.M.C. \$295
1/2 pick up.

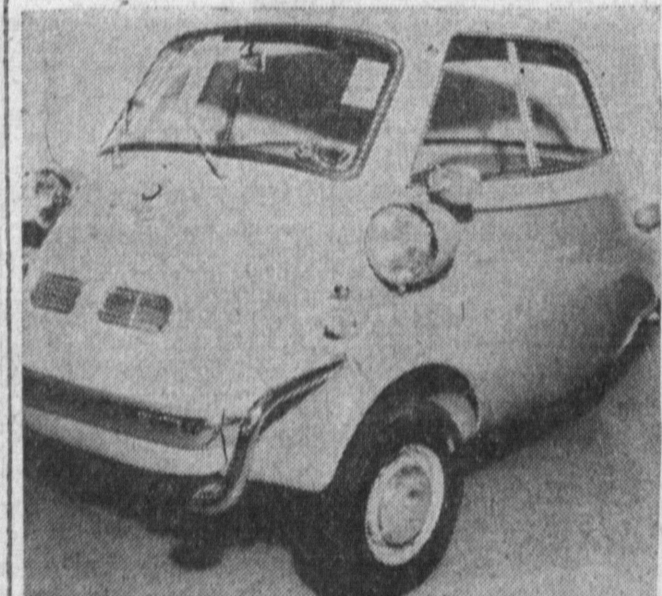
RUSH CHEVROLET

15600 So. Western Ave.

GARDENA

DA. 3-0300

HAVE...
ISETTA
... Will Travel!
AT...
60
MILES PER GALLON



You Can't Afford to Wait!!
\$1098
Complete Parts & Service Always Available
Marsh & Carlson
400 North Sepulveda
Manhattan Beach
FR. 6-5907

1953 CHEVROLET 1/2-TON PANEL
Well Cared for
Sold and serviced by us since new.
\$499
See Us Today - We'll Deal Your Way
FRED GLEDHILL
CHEVROLET
305 E. Anaheim Wilmington
NE 6-2465 TE 4-2491 HE 5-0956
Now Open Sunday

THE LEADER
The House You Can Trust - Since 1932!
7th to 8th
at Gaffey
TE. 2-4659

Sale
53 Olds... \$795
66 Hardtop.
'53 Cad... \$1495
Deville, Full power.
'55 Plym... \$1395
Station wagon (Plaza) Fully equipped. Perfect condition.
'53 Ford... \$595
4 dr. automatic, overdrive.
'56 Cad... \$3695
Sedan, De Ville, Full power air conditioned.
'55 Pont... \$1395
Catalina, Star Chief.
And Lots More to Select From
SEE
Bill Williams and Jim Tippett

Cecil L. Thomas
and Sons
Cadillac, Oldsmobile, GMC Trucks
7th to 8th on Gaffey
SAN PEDRO
TE. 2-4659

1957 FORD Fairlane, 4 dr., excellent condition & tires. Fordomatic, R & H, w-w tires, windshield washer. \$300 for my equity and take over payments of \$65.56 per month. Private party. DA 9-5724.
'55 VOLKSWAGEN—Sun roof with radio. Good condition. Price \$1325 which includes carry charges tax, Lic. FA 8-7710
'56 ROADMASTER—All accessories, All power equipment. Original owner. 17,000 mi. Best offer. FA. 8-2462
1950 FORD—2-door custom, overdrive, heater. \$150. DA 9-4835
HILLMAN station wagon, 1952. Good tires and paint. FA 8-1408 or see at G. Norton, 1001 W. 220th St.

SO. BAY EDSEL SALES

GRAND OPENING
You are cordially invited to visit our Big (31,000 sq. ft.) New Car Sales — Used Car Sales and Service Dept. — So. Bay's Finest New Automotive Center.

THURS.—FRIDAY—SATURDAY AND SUNDAY—Feb. 20th thru Feb. 23 We Offer Special "FREE BONUS" Specials PLUS "Special Event" Prices Both On New EDSEL CARS and "Green Light" Used Cars.

FREE Party for Kids... with "BING BONG," the Space Clown
Saturday 12 to 4 — ANIMAL BALLOONS — CARTOONS

100 Gal. Gas FREE
PLUS "Special Event"
Trade-In Allowance
On Purchase of Any New
EDSEL

- 1958 RANGER \$2399
Tudor Hardtop
 - 1958 PACER \$299
Tudor Hardtop — Low as DOWN
- Banks Terms — 36 Months**

FREE LUBE
Test Drive the **EDSEL**
Good for Feb. and March

Our Big New Service Department
Is Equipped To Give You
Finest Service
Complete Satisfaction
at Low Cost and Easy Terms

SOUTH BAY EDSEL SALES

500 So. Sepulveda

FR. 6-8911 Open Daily and Sunday 'til 10 P.M. Manhattan Beach

"Largest Foreign Car Dealer in the Harbor Area"

SUBURBAN MOTORS
MG-A—Rdstr. or Coupe—FOR THE FUN OF DRIVING
AUSTIN-HEALEY—Rdstr.—FOR THE MAN IN COMMAND
M-G MAGNETTE 4-Dr. Sedan—CLASSIC STYLING Plus ECONOMY
MORRIS 1000—2-Dr. & 4-Dr. Sedans, Station Wagon & Convertible
AUSTIN A-55 4-DR. SEDAN—TRADITION AT ITS BEST
RENAULT—Fabulous DAUPHINE or 4-CV—45 mpg.
ISETTA—The Utility Vehicle—60 mpg. & 60 mph.
WHERE SERVICE COMES FIRST
36,000 Mile Guarantee — TE 4-8595
445 E. Anaheim St., Wilmington
—TE 4-8595—

1956 BUICK
2 door Special Riviera Hard Top. Equipped with automatic transmission and full factory accessories.
\$1495

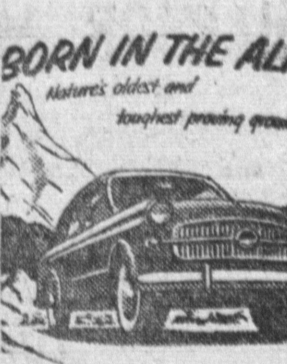
Butler Buick
400 South Sepulveda
Manhattan Beach

1953 CHEVROLET
BEL AIR 4-DOOR SEDAN
R&H, Power Glide, 2-tone paint, w-w tires.
\$799
"See us today — We'll deal your way"
FRED GLEDHILL
CHEVROLET
305 E. Anaheim Wilmington
NE. 6-2465 TE. 4-2491 HE. 5-0956
Now Open Sunday

FOR FAST COURTEOUS SERVICE FA. 8-2345

USE TORRANCE PRESS WANT-ADS FA. 8-2345

Fiat Division



FIAT
• 8 different models
• up to 49 mpg
• amazing roominess!
From \$1330

305 Pacific Coast Hwy.
Hermosa Beach FR 4-0821
1949 FORD—Good condition, twin pipes, good tires, overdrive, \$150. DA. 4-0723
FORD '50, 6 cylinder 2 dr. sedan, good cond., clean, original owner, \$100 or offer. DA. 3-7027.
MUST SELL '53 Merc. hard top, \$200 for equity. Take over payments. FR. 3-1005.