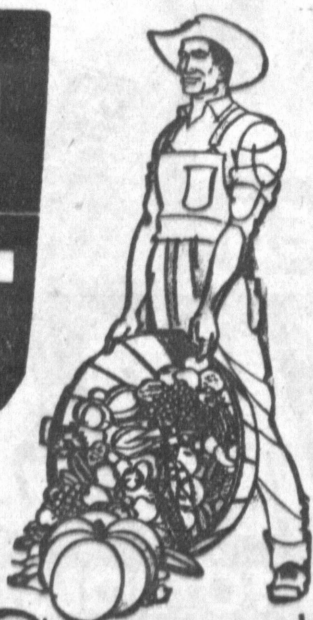


Moon . . .

Fabulous FOOD GIANT MARKETS To Serve You!

INGLEWOOD
CRENSHAW BLVD.
At Imperial
LYNWOOD
CENTURY BLVD.
the Civic Center

HAWTHORNE
423 SO. HAWTHORNE
At 132nd Street
WHITTIER
11161 EAST WASHINGTON
In Whittier Downs Mall



LIMIT RIGHTS RESERVED

HIGHMOST • CONCENTRATED ORANGE DRINK

FROZEN ORANGE

2 6-Oz. Cans 25¢

TROPIC STAR LIGHT MEAT TUNA

FLAKED Full No. 1/2 Can 15¢

GUARANTEED MEATS

EASTERN GRAIN FED PORK • FRESH, NOT FROZEN



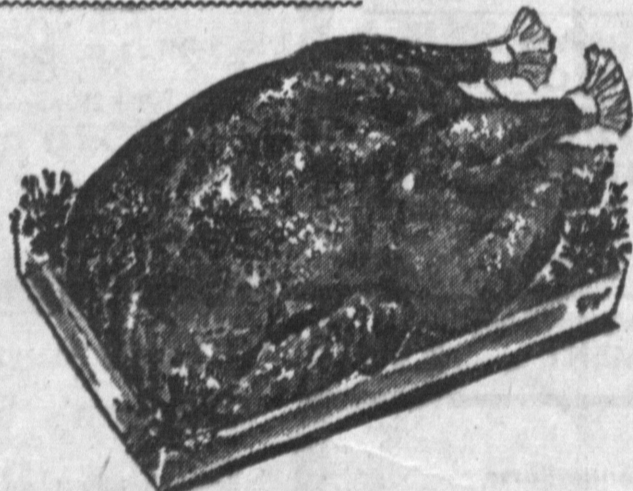
The pick of Iowa's choicest corn-fed pork. It's corn feeding that makes these Eastern loins so delicious. Fresh loins assure you of extra flavor that just can't be duplicated in frozen meat. Hundreds — all trimmed of excess fat before weighing.

PORK LOIN 49¢ lb

WHOLE OR HALF

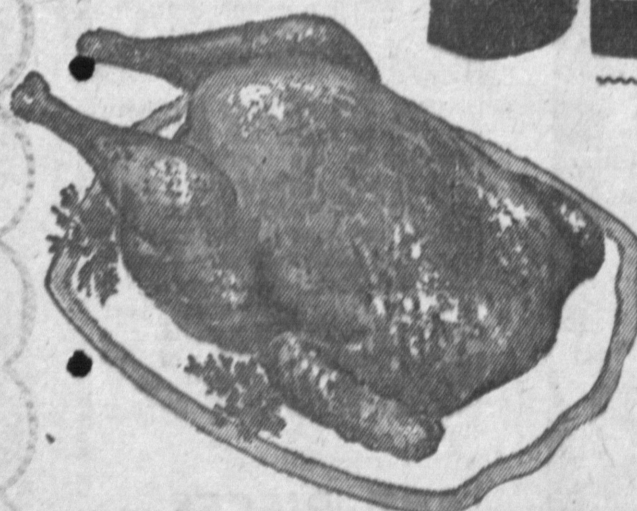
TOM TURKEY 33¢ lb

Food Giant's Famous "Banquet Perfect" or "Ambassador" Brand U.S.D.A. GRADE "A" WHOLE OR HALF 18 TO 22 LBS.



BUY ONLY ENOUGH FOR ONE MEAL
TURKEY QUARTERS
Hindquarter, Legs, Thighs, Backs 39¢ lb
Front Quarter, Wings and Breasts 49¢ lb

Food Giant Turkeys are not just bread-basted . . . they are b-b-a-d all over—they're shorter, thicker, rounder, just loaded with tender, flavorful meat. We guarantee these are the best Toms you can buy.



Caponette Roasting CHICKENS 49¢ lb

FRESH DRESSED • READY TO ROAST
SPOTLESSLY CLEAN
Stuff and roast, or B.B.Q. They're delicious either way, because they're heavy with tender meat. Make them your Sunday dinner, 4 to 5-lb. avg.

FAMOUS CURE Farmer John SLICED BACON 1-LB. PKG. 59¢

COUNTRY STYLE SPARE RIBS 49¢ lb	QUICK FROZEN MORRELL TASTEEZ Braided steaks of beef, pork or veal, 8-oz. pkg. 39¢	FULLY COOKED Langostinas Looks like shrimp, tastes like lobster. Fully cooked and ready to serve. 12-oz. pkg. 98¢	NORTHERN WATER HALIBUT STEAKS CENTER CUTS ONLY 43¢ lb	OLD FASHIONED FIN & HADDIE SMOKED FILLETS 49¢ lb
---------------------------------	-----------------------------------------------------------------------------------	-------------------------------------------------------------------------------------------------------------------	-------------------------------------------------------	--------------------------------------------------

Nabisco PREMIUM CRACKERS 1-lb. Pkg. 31¢	Wesson OIL 12-oz. Quart Bottle 72¢	Ore-Ida POTATO PATTIES 12-oz. Pkg. 15¢	All-Purpose LINIT STARCH 12-oz. Pkg. 15¢
-----------------------------------------	------------------------------------	----------------------------------------	------------------------------------------

• Crenshaw at Imperial •



NEW OFFICE—Roy Shaw, prominent real estate agent in the Torrance, Lomita, Harbor City area, has recently opened his seventh office. Shown above is the new office located at 251 E. Carson. Bernice Weiss, manager of the new office, and Cecil Bierce, salesman, shown above, are greeting new friends and old in their new quarters. Don Hall is also a salesman on weekends. Rentals are available at the new office. Many properties are listed for sale, and new listings will be given prompt attention. The office is open daily from 9 a.m. to 5 p.m. and on Sundays from 1 p.m. to 5 p.m.

Slight Drop in Auto Fatalities Bared Here

Traffic deaths in Southern California dropped slightly during 1957 from the all-time record high of the previous year, the Automobile Club of Southern California reported today. The 2216 highway deaths in the 13 Southern Counties was slightly below the 2262 fatalities recorded last year, but still well above the previous high figure of 2084 deaths in 1941. Increases over 1956 fatalities were recorded in eight of the 13 counties. Only Inyo, Kern, San Bernardino, San Diego and Tulare counties showed decreases from 1956. Los Angeles County accounted for 46 per cent of the 1957 total, with 1014 deaths, compared with 1007 in 1956, according to the

Coroner's office. Los Angeles City Police Department reported 401 fatalities last year, down slightly from the previous year, when 415 deaths were caused by neither Angeles City nor County came near their drastic 1941 death totals of 527 and 1103, respectively. Pedestrian fatalities in Southern California increased 18 over the 1956 total of 530. Of this total, 65 per cent was accounted for in Los Angeles County, where 356 pedestrians died as the result of traffic accidents. Los Angeles City was the site of 187 fatal pedestrian accidents.

WHATEVER YOUR PROBLEM, Torrance Press Want Ads help to solve it! To sell, rent, swap, buy, call FA 8-2345.

DR. CAMPBELL'S SAN PEDRO OFFICE ANNOUNCES



Sodium Pentathal or Novacaine for extractions at SAME PRICE

Improved methods for difficult cases

DENTURES on CREDIT NO INTEREST

704 S. PACIFIC

Dr. Frank Wharton, dentist, in charge



Early American Hurricane

LAMPS

with 3-Way Lighting!



The SPACE SAVER

Adjustable up or down and swings from side to side on its 15" wall arm. In polished brass with your choice of shades and colors.

LITERALLY HUNDREDS OF LAMPS TO CHOOSE FROM IN OUR COMPLETE LAMP DEPT.—THE FINEST SELECTION IN THE SOUTH BAY AREA.

\$9.99 EACH

- Choice of Shades—RIBBED - SWIRL or HOBNAIL
- Choice of Colors—RED - GREEN - WHITE - YELLOW

Choice of 28 other decorator colors at just \$1.00 extra.

Adjustable CEILING FIXTURE

Extends as much as 54". Authentic Early American styling in polished brass with your choice of shades and colors.

Both lamps feature hurricane lamp chimneys . . . 3-way lighting . . . Underwriter Laboratories approval. Shades are 8 inches in diameter.

OUR GUARANTEE

• If you buy furniture from us and find it priced for less elsewhere - we will refund the difference in cash.

1. Merchandise must be TAGGED with lower price.
2. Merchandise must be within a 20 mile area.
3. Our comparison shopper must verify all claims.

WARD-RICHARDS

EXACTLY 1 Mile West of Hawthorne Blvd.

2318 REDONDO BEACH BLVD. REDONDO BEACH

HOURS: Open Daily 'til 8 Saturdays 10 'til 8 Sundays 12 'til 8