

beef sale

THE VERY FINEST GRAIN-FED
TENDER AND EXTRA JUICY
U. S. D. A. CHOICE

U.S.D.A. GRADED CHOICE, TENDER
JUICY, WELL TRIMMED, BLADE CUT CHUCK

BEEF ROAST 43^c lb.

U.S.D.A. CHOICE
TENDER, JUICY CENTER CUT

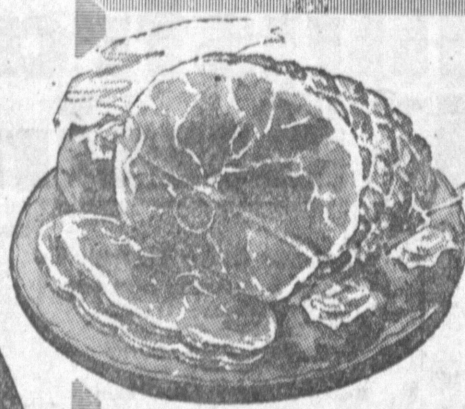
CHUCK STEAK 49^c lb.

U.S.D.A. CHOICE
WELL AGED & WELL TRIMMED

SWISS STEAK 59^c lb.

U. S. INSPECTED, OVEN-READY, WASTE-FREE, YOUNG GRAIN-FED
SELECT HEN TURKEYS 39^c lb.

PRIDE OF UTAH, 4 to 8 Lbs. — The Very Finest, Grain-Fed Turkeys
BABY BELTSVILLE B-B-Q -- ROAST OR BAKE 49^c lb.



CUDAHY'S PURITAN
LEAN, EASTERN, CORN-FED
READY-TO-EAT
DELICIOUSLY SWEET AND EXTRA TENDER
SUGAR CURED, HICKORY SMOKED

HAM 45^c lb.

BUTT END
59^c lb.

SHANK PORTION
LARGE MEATY
PARTS TO BAKE



FARMER JOHN
THE VERY BEST GRADE A
LEAN, EASTERN, CORN-FED
ALL CENTER SLICES
1-LB. CELLO PKG.

SLICED BACON
(Reg. 79c Value)

59^c lb.

LUER'S FINEST
READY-TO-EAT
THE VERY FINEST
BONELESS HAM 89^c lb.

STOCK YOUR FREEZER

U.S.D.A. Graded Choice... the very finest, grain-fed beef cut, wrapped and sharp frozen to your specifications by our expert meat cutters at no additional charge.

Side Of Beef **49^c lb.** | Hind Quarter **59^c lb.** | Fore Quarter **44^c lb.**

CERTI-FRESH, LARGE FAMILY PACK
Crispy Fried... Heat 'N Eat
FISHSTICKS 49^c PKG.

FOX DELUXE, PAN-READY, WHOLE
CUT-UP
FRYING CHICKENS 89^c PKG.

FROZEN FOOD BUYS!

J and D SUPREME
FRENCH FRIED
SHRIMP
5-oz. Package **39^c**

MORRELL PRIDE
FROZEN
TASTEEZ

BEEF • PORK • VEAL
8-oz. PKG. REG. 49c **39^c**



Farm-Fresh Produce

U. S. NO. 1
THE VERY BEST

SELECT WHITE ROSE

POTATOES

10 LBS. 29^c



CLARK JEWELRY CENTER
KERMAN-MORILLO JEWELERS

EXPERT WATCH REPAIRS
FREE ESTIMATES
1 YEAR GUARANTEE

WATCH CLEANING \$5.95
RE-SIZE RINGS from \$2.95

WATCH BAND SALE!

LADIES' or MEN'S EXPANSIONS

Reg. 8.95 NOW **\$3.95**
Reg. 4.95 NOW **\$1.95**

LEATHER BANDS **\$1**
NYLON BANDS **\$1**

DONALD DUCK FANCY SECTIONS

GRAPEFRUIT No. 303 Can **21^c**

WESTON'S WONDERFUL COOKIES

CHOCOLATE DROP 13-oz. Bag **29^c**

SUNSHINE FRESH BAKED

HYDROX COOKIES 12-oz. Cello Pkg. **39^c**

LIPTON SOUP MIXES
Reg. Size Pkgs.

ONION 2 for **35c**
NOODLE 3 for **41c**
TOMATO VEGETABLE 3 for **41c**
BEEF VEGETABLE 2 for **35c**
PEA SOUP 2 for **29c**

PREAM

NEW EASY WAY TO "CREAM" IT! **31^c**

GOLDEN CREME FIRST QUALITY BUTTER
1/2-LB. PKGS. **38^c**



FRESH HAWAIIAN
THE VERY BEST
SWEET, RIPE, JUICY
PINE-APPLE

A TROPICAL TREAT **9^c lb.**

BROCCOLI

GARDEN FRESH ICE PACKED
FINEST NORTHERN



10^c lb.

DEGLET NOOR

NATURAL CALIFORNIA DESERT GROWN

DATES

12-OUNCE PACKAGE **19^c PER PKG.**

Barclay's BOURBON



Light Body, Full Flavor
Full 5 Years Old

STRAIGHT BOURBON WHISKEY

\$3.99

Full Fifth



Quality LIQUORS

SAVE 15 Cents ON 6 BOTTLE CARTON



KING SIZE
6 Bottles Now Only **30^c** Plus Dep.

ALPINE BEER

REFRESHING AS MOUNTAIN AIR
MILD and MELLOW

12-OUNCE CANS

12 for \$1.59

Biscuits

BALLARD SWEET MILK or PILLSBURY BUTTERMILK READY-TO-BAKE

2 8-OUNCE CANS 25^c

SWANSON'S FROZEN PIES

CHICKEN BEEF TURKEY 8-oz. Pie **29^c**

MILANI'S 1890 FRENCH DRESSING

6-oz. btl. **31^c** 12-oz. btl. **53^c**

ALL PURPOSE DETERGENT NEWS

Lge. pkg. **25^c** Qt. **47^c**

BELL BRAND P-NUT BUTTER

18-oz. Jar **59^c**

- | | |
|---|--|
| STAR-KIST FROZEN TUNA PIE 8-oz. pie 25^c | Whole Kernel Corn with Peppers 19^c |
| FROZEN HASH BROWN POTATOES 15^c | PETER PAN PINK SALMON Tall No. 1 can 63^c |
| PURE INSTANT COFFEE NESCAFE 6-oz. jar \$1.39 | PY-O-MY BROWNIE MIX 10-oz. pkg. 31^c |
| ELASTIC STARCH 12-oz. pkg. 16^c | HIGHLAND CANE and MAPLE TABLE SYRUP 12-oz. jar 31^c |
| JONNY MOP REFILLS 25^c | KERN'S PURE APRICOT JAM 12-oz. jar 27^c |
| SANITARY JONNY MOP 89^c | RATH BLACK HAWK PORK PATTIES 8-oz. can 41^c |
| DOGS GO FOR PARD DOG FOOD Lge. can 16^c | RE-UMBERTO PURE IMPORTED OLIVE OIL 1/2-Pt. can 43^c |
| ALL PURPOSE DETERGENT TREND Giant size pkg. 53^c | ALUMINUM FOIL, 25-Foot Roll REYNOLD'S WRAP Assorted Flavors Dog Food 31^c |
| ALL PURPOSE DETERGENT TREND Large pkgs. 2 for 43^c | RED HEART Large cans 2 for 31^c |

- **PUENTE** AT ELLIOT AVENUE IN LA PUENTE
 - **SEPULVEDA** AT MARINE AVENUE IN MANHATTAN BEACH
 - **OLIVE** AT WILMINGTON BLVD. IN COMPTON
 - **VERMONT** AT 140TH STREET IN GARDENA
- AMPLE FREE PARKING
OPEN 7 DAYS A WEEK FROM 9 TO 10



"FAMOUS FOR LOWER FOOD PRICES!"

- **HWY. 101** AT HAWTHORNE BLVD. IN TORRANCE
 - **CRENSHAW** AT COMPTON BLVD. IN GARDENA
 - **WESTERN** AT IMPERIAL AVENUE IN LOS ANGELES
 - **CLARK** AT ROSE STREET IN BELLFLOWER
- LIMIT RIGHTS RESERVED
8 FRIENDLY MARKETS TO SAVE YOU MORE