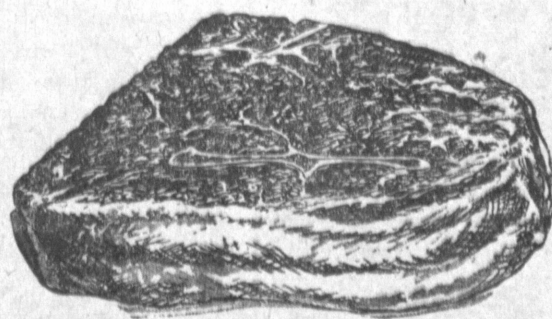


**LUER'S IOWA FARM BRAND**  
LEAN, EASTERN CORN-FED  
**SLICED BACON**  
Cello Wrapped pkgs.  
REG. 69c VAL.!

**49<sup>c</sup> lb.**

# beef sale



FEATURING THE VERY FINEST GRAIN-FED, WELL-AGED AND WELL TRIMMED U.S.D.A. CHOICE STEER BEEF

EXTRA TENDER AND EXTRA JUICY, U.S.D.A. GRADED CHOICE, GRAIN-FED, BLADE-CUT, CHUCK

**BEEF ROAST 39<sup>c</sup> lb.**

U.S.D.A. CHOICE, GRAIN-FED STEER BEEF TENDER, JUICY, MEATY, CENTER CUT

**CHUCK STEAK 49<sup>c</sup> lb.**

U.S.D.A. CHOICE, WELL-AGED AND WELL TRIMMED GRAIN-FED STEER BEEF

**SWISS STEAK 59<sup>c</sup> lb.**

**YOUNG, TENDER 4 to 6 lbs.**  
FRESH KILLED  
**FINEST CAPONETTE ROASTERS**  
B-B-Q ROAST or BAKE

**49<sup>c</sup> lb.**

**YOUNG, TENDER, FRESH SLICED BABY BEEF LIVER 39<sup>c</sup> lb.**

**SOUTHERN SEAS FRESH FROZEN FILLET HALIBUT 49<sup>c</sup> lb.**  
ONE POUND PKG.

**CUDAHY'S PURITAN**  
LEAN, EASTERN, CORN-FED  
**READY-TO-EAT**  
DELICIOUSLY SWEET AND EXTRA-TENDER SUGAR CURED, HICKORY SMOKED

**HAM 45<sup>c</sup> lb.**

LARGE MEATY PARTS TO BAKE SHANK PORTION

**BUTT END 59<sup>lb</sup>** **WHOLE HAM 49<sup>lb</sup>**

CLARK WONDERFUL MEATS ARE GUARANTEED TO PLEASE YOU 100%



RICH CREAMY WHOLE MILK

**LONGHORN CHEESE 49<sup>c</sup> lb.**

CLARK'S FINEST WISCONSIN AMERICAN, PIMIENTO or SWISS

**SLICED CHEESE 29<sup>c</sup> 8-OZ. PKG.**

**VIZCARRA'S FINEST ENCHILADAS**

- 14-OZ. PKG. BEEF
- 16-OZ. PKG. CHEESE

REG. 43c EACH

**3 PKGS. FOR \$1.**

YOUR CHOICE AT BIG SAVINGS!

<b>IVORY SOAP</b> Large Size 2 for 33 <sup>c</sup>	<b>IVORY SOAP</b> Personal Size 4 for 26 <sup>c</sup>	<b>IVORY SOAP</b> Medium Size Per Cake 11 <sup>c</sup>	<b>CAMAY SOAP</b> 2 bath size 29 <sup>c</sup>	<b>CAMAY SOAP</b> Reg. Size Cake 10 <sup>c</sup>
<b>ZEST DEODORANT SOAP</b> 2 Reg. Size Cakes 29 <sup>c</sup>	<b>ZEST DEODORANT SOAP</b> 2 bath size cakes 41 <sup>c</sup>	<b>LAVA HAND SOAP</b> 2 med. size cakes 25 <sup>c</sup>	<b>COMET CLEANSER</b> 2 REG. 31 <sup>c</sup> 2 GT. 43 <sup>c</sup>	<b>DREFT DETERGENT</b> Giant Package 79 <sup>c</sup>
<b>CUT-RITE WAX PAPER</b> 125-foot Roll 27 <sup>c</sup>	<b>PUSS 'N BOOTS CAT FOOD</b> 3 8-ounce cans 25 <sup>c</sup>	<b>NORTHERN COLORED TISSUE</b> 3 roll pack 27 <sup>c</sup>	<b>MODESS SANITARY NAPKINS</b> Package of 12 45 <sup>c</sup>	<b>CHEER ALL PURPOSE DETERGENT</b> LGE. PKG. 33 <sup>c</sup> GT. PKG. 79 <sup>c</sup>



## Farm-Fresh Produce

EXTRA FANCY, CRISP, SOLID... JUICY WASHINGTON STATE

**SELECT DELICIOUS APPLES 10<sup>c</sup> lb.**

LUSCIOUS LARGE FULL BUNCHES! THE VERY FINEST GOLDEN RIPE CENTRAL AMERICAN

**BANANAS 10<sup>c</sup> lb.**

SWEET SPANISH ONIONS 5<sup>c</sup> lb.

JACK'S CELLO PKG. **Salad Mix 5<sup>c</sup> PER PKG.**  
PICKED AND WASHED DAILY

JACK'S CELLO PKG. **SPINACH 9<sup>c</sup> PER PKG.**  
PICKED AND WASHED DAILY

**CLARK JEWELRY CENTER**  
KERMAN-MORILLO JEWELERS

EXPERT WATCH REPAIRS FREE ESTIMATES 1 YEAR GUARANTEE

WATCH CLEANING \$5.95  
RE-SIZE RINGS \$2.95

G. E. **ELECTRIC ALARM CLOCK \$3<sup>98</sup>**

G. E. **ELECTRIC KITCHEN CLOCK \$3<sup>98</sup>**

GOLDEN CREME FIRST QUALITY BUTTER 1/2-LB. PACKAGE 38<sup>c</sup>

TOM SAWYER GIANT PAK POTATO CHIPS 10-OZ. PACKAGE 59<sup>c</sup>

WHIP CREAM TOPPING REDDI WIP 6-OZ. PRESSURE CAN 54<sup>c</sup>

CHALLENGE FIRST QUALITY BUTTER 1/2-LB. PACKAGE 38<sup>c</sup>

LOMA LINDA RUSKETS Whole Wheat Cereal 12-OZ. PACKAGE 25<sup>c</sup>

PURE VEGETABLE CRISCO SHORTENING 1-POUND CAN 30<sup>c</sup>

- BIRDS EYE FROZEN SLICED GREEN BEANS, 10-oz. 22c
- BIRDS EYE FROZEN MIXED VEGETABLES, 10-oz. pkg. 22c
- BIRDS EYE FROZEN SWEET SUGAR PEAS, 10-oz. pkg. 19c
- BOSCO Milk Amplifier, 12-oz. jar. 39c; 24-oz. 63c
- CREAM OF RICE, Breakfast Cereal, 20-oz. pkg. 40c
- CHICKEN OF THE SEA OYSTER STEW, 10-oz. can. 31c
- BLU LABEL KARO SYRUP, 1 1/2-lb. jar. 26c
- ARGO CORN STARCH, lb. pkg. 15c
- GERBER'S STRAINED BABY FOOD, reg. cans. 3 for 26c
- GERBER'S ASSORTED BABY CEREALS, 8-oz. pkg. 19c
- GREEN GIANT SWEET SUGAR PEAS, 303 can. 21c
- HILLS BROS. INSTANT COFFEE, 2-oz. jar. 49c
- KRETSCHMER'S WHEAT GERM CEREAL, 12-oz. jar. 37c
- Crown Prince Horsemeat Pet Food, lge. can. 2 for 39c
- Lint Laundry Starch, 12-oz. pkg. 15c; 3-lb. pkg. 41c
- BLU DUTCH HOUSEHOLD CLEANSER, gt. cans 2 for 37c
- KAISER ALUMINUM BROILER FOIL, reg. pkg. 43c

- **PUENTE**  
AT ELLIOT AVENUE IN LA PUENTE
  - **SEPULVEDA**  
AT MARINE AVENUE IN MANHATTAN BEACH
  - **OLIVE**  
AT WILMINGTON BLVD. IN COMPTON
  - **VERMONT**  
AT 140TH STREET IN GARDENA
- AMPLE FREE PARKING
- OPEN 7 DAYS A WEEK FROM 9 TO 10

**Clark Markets**

"FAMOUS FOR LOWER FOOD PRICES!"

- **HWY. 101**  
AT HAWTHORNE BLVD. IN TORRANCE
  - **CRENSHAW**  
AT IMPERIAL BLVD. IN GARDENA
  - **WESTERN**  
AT IMPERIAL AVENUE IN LOS ANGELES
  - **CLARK**  
AT ROSE STREET IN BELLFLOWER
- LIMIT RIGHTS RESERVED
- 8 FRIENDLY MARKETS TO SAVE YOU MORE