

FOUR OF the South Bay-Torrance Civic Symphony Orchestra Association who were honored recently for their ten or more years of service in the orchestra; William Krimmel, George Hiltz, who has never missed a rehearsal, Leona Huffman, and Leroy Fansler. They are appearing in the "Nutcracker Prince" at Redondo High Auditorium next Sunday afternoon at 3 p.m. and Monday evening at 8 p.m.

Cast of 300 Performs in Civic Symphony's 'Nutcracker Prince'

The first performance of the "Nutcracker Prince" will be presented by the Civic Symphony, Elyse Aehle directing, at Redondo High Auditorium Sunday afternoon at 3 p.m. The special holiday show will be repeated Monday evening at 8 p.m. Reserved seats may be obtained by calling Mrs. Alfreda Headley, Fr. 55829.

This is another of the programs in which the Civic Symphony displays the talents of our local citizens. Each part of the production is composed by and is an original expression of one of the 300 members of the cast.

Miss Aehle adapted the story of the Nutcracker, written over 100 years ago by Hoffman, into four acts and six scenes. Six local choreographers each selected one of these scenes which they wished to develop and devised the appropriate ballets and costumes.

Carl Whitmer chose the Christmas party scene in the first act; Barbara Simonson chose the scene in which the

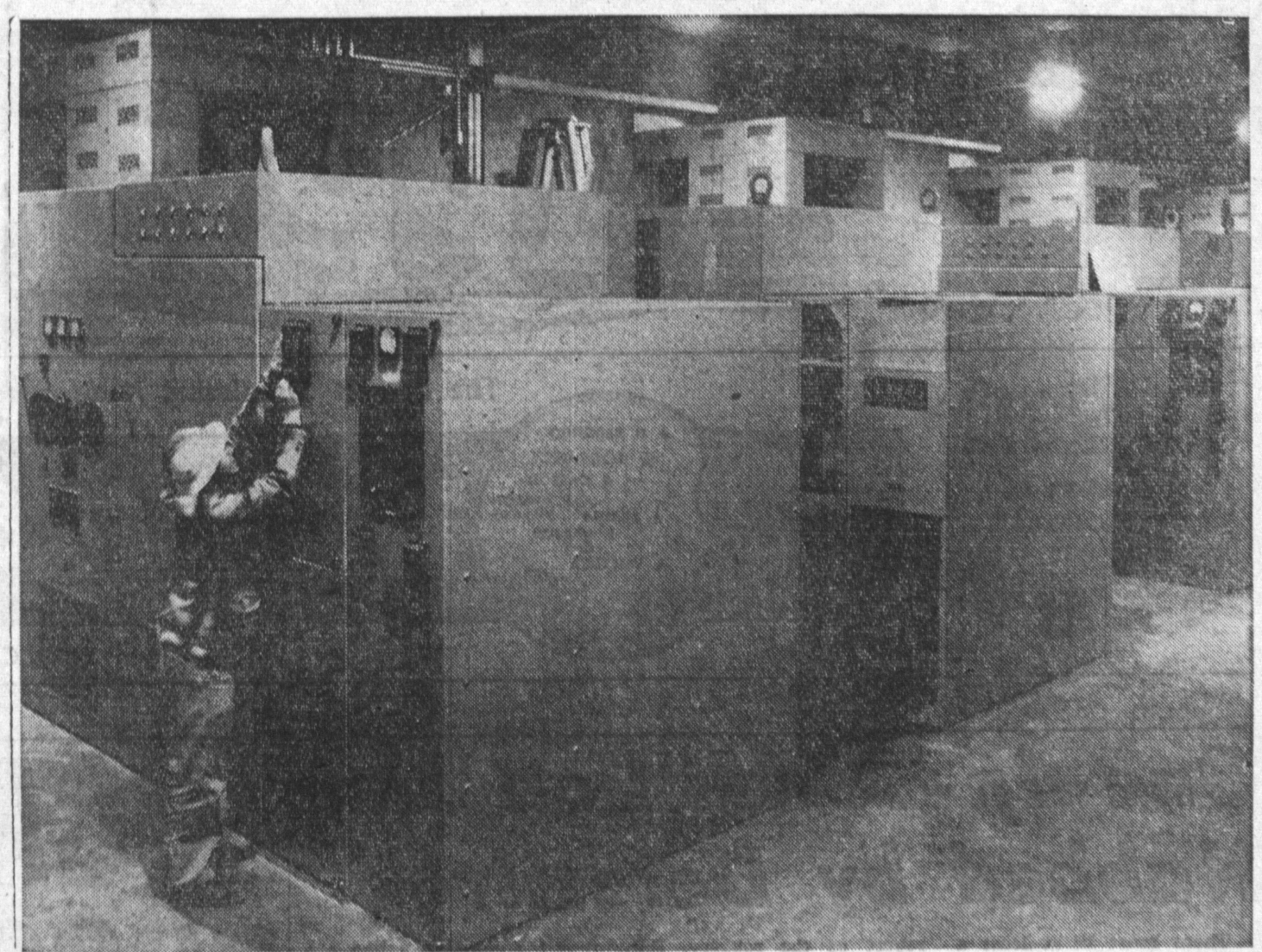
toys come to life and the mice battle with the toy soldiers; Dorothy La Spina devised the lovely snow scene in the second act and Phyllis Moore trained the dancers in the Snow Forest near the Lake of the Swans.

In the third act Jan Darian is responsible for the "Palace of the Prince" and the Christmas Fairy's solo, and Mildred Stover and Mary Tiffany devised the Waltz of the Flowers.

Armand La Pointe, the narrator, is responsible for the development of his part, and Jack Lockhart who depicts the father, wrote the lyrics for his song and arranged the music. Several orchestrations are by members of the symphony. The scenery is the design of our well-known local artist Lee Brooks, the figure of the Nutcracker and the "Castle in the Clouds" are by Larry Willey and the costumes were designed by the choreographers and Miss Aehle.

The orchestra is also honoring 23 of their members who have served for more than 10 years. Among them are William Krimmel, Leona Huffman, Leroy Fansler and George Hiltz who has never missed a rehearsal.

The Cross children's choir who sing the part of the "Children of the Snow" are Cheryl Scott, Marty Hamilton, Jean Thompson, Lane Taylor, Patty Gerehow, Jim Nisbet, Pamela Christie, Karen Keller, Sharon Casey, Wendy Johnson, Kathy Hamilton, Lisa Paliwoda, Caroline Cass, Elizabeth Grasia, Diane Simas, Stella Sue Jones, Bob Corner, Vicki Belk, Marsha Kaufman, Patty Jones, Mary Walraven, Mary Evans, Linda Wilks, Cherie and Laurie Sanders, Heralds, Diane Taylor and Barbara Bieber.



HARVEY ALUMINUM'S new reduction plant, ready to pour its first molten aluminum next year, will use enough electricity annually to serve 360,000 homes. These ignitron rectifiers, part of \$7,000,000 in electrical apparatus supplied by Westinghouse for the plant, will power potlines used in the electrolytic re-

duction process. Neal Peterson, Westinghouse service engineer, is shown adjusting relay on rectifier cabinet. In this two-block-long building, adjoining the potlines where alumina is reduced to primary metal, are 32 similar cabinets holding ignitron rectifiers.

New Harvey Aluminum Plant Nears Completion

More than \$7,000,000 in electrical equipment will power Harvey Aluminum's new aluminum reduction plant which is rapidly nearing completion here, it was announced this week.

Lawrence A. Harvey, executive vice president, said electric power tests will start soon with the first molten aluminum scheduled to be poured early next year.

Westinghouse Electric Corporation supplied virtually all the electrical apparatus for the new plant, which will use about 10 kilowatt-hours of electricity for every pound of aluminum produced. At Harvey's planned capacity rate of 108 million pounds a year, this would equal the total average annual electrical consumption by 360,000 American homes.

Harvey engineers in Torrance, designed The Dalles plant. Westinghouse collaborated with them in designing its electrical system.

The electrical apparatus includes 32 ignitron rectifier cabinets, which occupy a building two blocks long. Westinghouse also supplied outdoor transformers, voltage regulators, switchgear and circuit breakers and auxiliaries such as meters and controls.

Electric power will be received from Bonneville Power Administration lines at 115,000 volts alternating current, Mr. Harvey explained. The transformers, voltage regulators and rectifiers will convert this electricity to 700 volts direct current.

This DC electricity then will be fed into banks of electrolytic cells in two potlines where white, flour-like aluminum oxide is reduced to molten aluminum. The oxide—also called alumina—is derived from bauxite ore through a chemical process.

The alumina, shipped across the Pacific Ocean from Japan, will move on barges up the Columbia River to the Harvey plant. Aluminum pig, ingot and billet, cast from molten metal, will be shipped to Harvey Aluminum's fabricating facilities to be processed into aluminum mill products. Primary metal from The Dalles will also be shipped to other aluminum fabricating companies.

Name Winner In Carson Xmas Contest

BY J. R. GATELEY

John Calas, president of the Carson Chamber of Commerce has announced that the Christmas decorating committee awarded first prize for outdoor decorations to Herman Schmidt of 128 E. 235 street. Second prize went to Guy Sale, 120 E. 234th place, and third prize to Ruth Tobkin, 227 E. 223 street.

First prize for indoor decorations was awarded to Mrs. Walter Forrester, 1640 E. 213 street. Second prize was won by Virginia Howard, 348 E. 229 street, and third prize by Robert H. Peal, 21241 Sherer.

For the commercial establishments, Ben Cluff Dairy at 22020 S. Avalon blvd. won first prize and E. J. Benda, Chevron Station, 21703 S. Avalon blvd. won second prize. Business firms were given a scroll, and the residents were given merchandise for prizes.

APPEAL FOR TOYS

If any of the fathers are through playing with Junior's toys, and it is found that Junior has more toys than he needs, there is still time to turn them in to be used by some other child who is less fortunate. Betty Allen, president of Ladies Auxiliary of Avalinguez VFW Post 9888 stated that toys for an orphanage in Los Angeles will not be delivered until sometime in January, so there is yet time to leave toys at her house at 327 E. 229 place.

not hang any one with red hair in California. When asked why, and what kind of punishment was given, the file clerk stated that a raw hide rope was used.

ALL QUIET

The Los Angeles County Fire Department on Carson Street had a very quiet Christmas. Except for a rescue on Christmas

Day, the company has had no calls in the last few days.

On Christmas Day, the rescue squad was called to 21909 S. Main to give first aid to Nell Parris, who was suffering from an apparent heart attack. The patient was revived and was treated by a family doctor.

Adult Classes Will Resume January 6

Classes for adults of the Torrance Evening High school will resume after the holidays on Monday evening, January 6.

Although the new semester does not begin until February 3, new students may enroll in most classes at this time. We also welcome former students who wish to brush-up on old skills or acquire new skills. Here is an opportunity to enroll now and continue through the next semester.

There are openings in both shorthand and typing classes. The late afternoon typing class will include instruction in cutting stencils, using the mimeograph, dictaphone, and ten-key adding machines. Typing and shorthand tests are given each evening which will aid those working toward civil service promotions.

Other classes in which new or former students may enroll include: Machine shop, woodshop, blueprint and drafting, cake decorating, dressmaking, psychology, public speaking, mathematics, English, elementary reading, English for the foreign born, ceramics, lampshade making, knitting, development of personality and appearance, and parent participation classes in child observation and cooperative nursery.

For information concerning these classes telephone the Adult Education Office, FA 8-2272, located in Torrance high school, 2200 West Carson st.

Schedules for the second semester, which begins February 3, will be available on or about January 8. New students who wish to enroll for the spring semester for high school credit may sign up any time in January.

The General Educational Development (GED) tests are given to both veterans and non-veterans as partial credit toward obtaining high school

diplomas. Persons without a high school diploma will find it worth the time and effort to consult a counselor in the Adult Education Program.

Local Freshman Awarded Honor Certificate at UC

Dennis Roy Brown of Torrance an entering freshman student at the University of California, Berkeley, has been presented an honors at entrance award by the University, the committee on Undergraduate Scholarships has announced.

The honors at entrance awards, in the form of certificates, are given to students with outstanding high school records in anticipation of distinguished performance in college. Approximately the top ten to 15 per cent of entering freshmen qualify, the University committee said.

GENERAL? BEN FRANKLIN

This famous American saw the establishment of the first postal system in July, 1775.

Your message travels far and wide when it's in a Torrance Press Classified Ad. You'll soon have results if you dial FA 8-2345 for an Ad Writer.

Aliens Must Report

Richard C. Hoy, District Director of the Los Angeles District, Immigration and Naturalization Service, reminds aliens to report their addresses during January. Address Report Cards are available at all Post Offices. Willful failure to report may lead to serious penalties.

STADIUM
FA. 8-6375

SUN.-MON.-TUES.
BING CROSBY IN
"MAN ON FIRE"
— together with —
SAL MINEO in
"DINO"

Starts New Years Day
"JAILHOUSE ROCK"

ROADIUM DRIVE-IN
Redondo Beach Blvd. at Crenshaw
DAvis 4-2664

Sun., Mon., Dec. 29, 30
"MAN IN GRAY FLANNEL SUIT"
(Color)
Gregory Peck-Jennifer Jones
— Also —
"THE BIG CAPER"
Rory Calhoun - Mary Costa

Tues., Wed., Dec. 31 - Jan. 1
"SPOILERS OF THE FOREST"
(Color)
Rod Cameron - Vera Ralston
— Also —
"THE WILD PARTY"
Anthony Quinn-Carol Ohmart

NEW CAR DIRECTORY

G.M.C. TRUCKS
OLDSMOBILE - CADILLAC
CECIL L. THOMAS & SONS
Terminal 3-5291 — PACIFIC at FOURTH, SAN PEDRO

DODGE - PLYMOUTH
FRontier 2-2122

SALES & SERVICE
WALTER G. LINCH
312 PACIFIC COAST HWY. - 312 S. CATALINA, Redondo Beach

STUDEBAKER
ORegon 8-4005
Dealer Authorized by Studebaker Corporation to Service the Torrance Area

FRANK H. AFTON CO.
240 N. MARKET, INGLEWOOD

INGLEWOOD NASH
4351 W. CENTURY BLVD.
(Just East of Car Line)

OS. 7-8253 OR. 8-3186

Aircraft Workers
YOU CAN BUY
FURNITURE and APPLIANCES
FOR
NO CASH DOWN
McMAHAN'S FURNITURE STORES
1306 SARTORI FA. 8-1252 TORRANCE

SPECIAL "RAINTREE COUNTY" movie exhibit

SEE—a display of some ORIGINAL COSTUMES worn by Elizabeth Taylor and Eva Marie Saint in OUR LOBBY—JAN. 1st thru 10th.

The authentic costumes designed and created by Walter Plunkett for MGM's motion picture RRAINTREE COUNTY filmed in MGM Camera 65 and color.

YOU're all invited—BRING THE FAMILY.

IF YOUR FUNDS ARE EARNING LESS THAN THEY SHOULD...
IF YOU SEEK THE SAFETY OF A STRONG SAVINGS INSTITUTION...

TRANSFER YOUR SAVINGS—NOW

TO **Southwest** where it pays more to save more
ASSETS OVER \$43,000,000

4% CURRENT YEARLY DIVIDEND
PAID QUARTERLY ON ALL ACCOUNTS

Open your account* up to Jan. 1st—you'll start earning from the 1st

* individual accounts joint accounts
corporate accounts pension funds
perpetual-care funds legal trust funds

EACH ACCOUNT INSURED UP TO \$10,000

AN IMPORTANT MESSAGE TO ALL INVESTORS

by Fred E. Edwards, Pres. Southwest Savings & Loan

Re-investment Period, Jan. 1st to 10th, means activity, because without loss of accumulated interest or dividends you can open accounts or relocate your savings where earnings are higher. We will continue to pay the maximum possible dividends on your insured savings account. We feel this is one of several reasons why you benefit more when you invest with Southwest Savings and Loan.

Southwest Savings AND LOAN ASSOCIATION
TORRANCE
1603 Cravens Ave., (at Marcelina) FAirfax 8-6111
MAIN OFFICE: INGLEWOOD