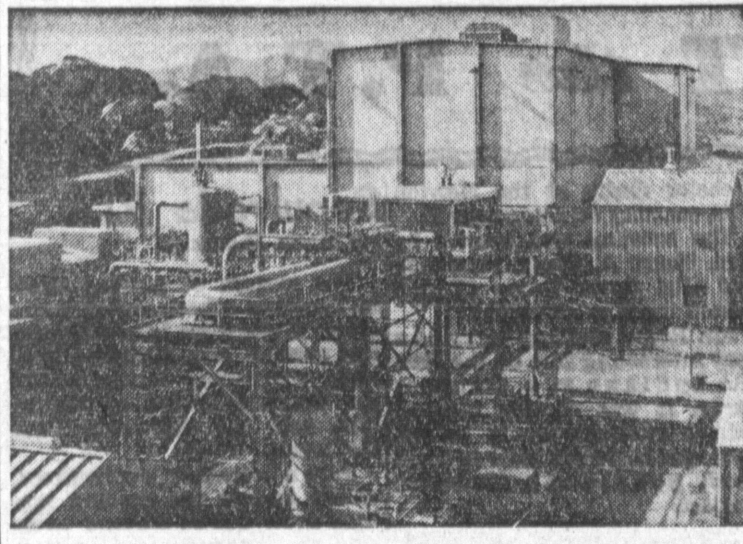




FIRST PLACE SAFETY AWARD is presented to Don Hyde, superintendent of industrial relations, Torrance Works, Columbia-Geneva Steel Division, U. S. Steel Corporation, by Earl Houck, left, past general chairman of the metals section of the National Safety Council. The plaque was presented the Torrance plant following judging on a national basis.

Hatful of Rain To Continue

Two extended performances of the San Pedro Theatre Arts production of "A Hatful of Rain" were announced today. Originally scheduled to close last Sunday, the play has been held over for Friday and Saturday nights, November 29 and 30. The curtain will go up both evenings at 8:15 p.m., at the Pacific Playhouse, 501 S. Cabrillo Ave. Reservations for these performances are being accepted by Mrs. John Kopczak, 2828 Carolina st., or by Mrs. Jim Allen, 2820 Carolina st. The 3-act play, directed by Jimmy Allen, is the original, uncut version of the Broadway hit which depicts the story of drug addiction and its effect on one family. Starring in the production are Sylvia Budd, Ron Hogue, Jim Flynn, Walter Buck, James Wilson, Ted Cheadie, Andy Rosenthal, Nancy Sullivan, and Dan Jeldun.



Experimental Atomic Plant Opened in State

A new age of atomic power dawned in the west last week as Southern California Edison Company formally opened its Santa Susana experimental generating plant—the first owned by a private utility to commercially generate and distribute electricity using power from a non-military atomic energy reactor. High ranking officials of governmental and industry participated in dedication ceremonies for the "Sodium Reactor Experiment," with which Edison's generating plant is associated, and joined the press in a tour of the entire project. The Sodium Reactor Experiment is a part of the Atomic Energy Commission's program to develop economical power from atomic energy, and is being conducted by Atomics International, a division of North American Aviation, Inc. "Although our atomic generating plant is experimental in nature, and of relatively small size, we hope to learn from it much that will be of use in planning full scale nuclear power plants in the years ahead," declared Edison President Harold Quinlan. "We intend to share our findings with other electric utility operators in pursuit of a common goal—developing for the United States the most efficient and advanced methods of producing electricity from nuclear energy to be found anywhere in the world," Quinlan said. The Edison president voiced belief that atomic power may approach the cost of conventionally produced electricity within the next decade, and that within 20 years atomic power may be producing "a sufficient amount" of the nation's total power supply. The Santa Susana plant, built by Edison at a cost of about \$1,400,000 has a generating capacity of 7500 kilowatts—a relatively small amount of the company's total capacity of almost three million kilowatts. Power developed at the station will be subject to interruption dependent upon the needs of the experimental program. Utilizing heat from the nuclear reactor, a sodium graphite type, the Edison plant generates electricity through the production of steam but without the use of conventional fuels, such as natural gas or fuel oil. The reactor uses uranium for fuel in a liquid sodium to transport the heat to the steam generating facilities. This is accomplished by circulating sodium through the reactor core, thus absorbing the heat. The sodium flows out of the core at a temperature of approximately 960 degrees Fahrenheit. It is then pumped into a vessel which also contains water in separate tubular compartments. The heat converts the water into steam, which in turn spins the blades of the turbine to generate electricity. Dramatizing the tremendous stores of energy locked in nuclear fuels, it was pointed out that a ten pound piece of uranium can generate as much power as two and a half million gallons of fuel oil—which is the amount used by Edison in a single day's operation. If the way to a man's heart is through his stomach, that explains why America has so many stout-hearted men.—Imogene Fey.

Navy Promotes Local Reservist

A Torrance Naval Air reservist, Willis Flanagan of 19917 Mansel ave., was recently promoted to Chief Petty Officer. Assigned to Naval Air Reserve squadron VS-773 at Naval Air Station Los Alamitos, Chief Aviation Machinists' Mate Flanagan now has the job of training chief for mechanics. Flanagan entered the service during World War II in 1944 and served two years aboard the aircraft carrier USS Wasp. He was a full time "station-keeper" at Los Alamitos after the war in 1946-47. Released to inactive duty at that time he served in a reserve squadron until 1950. In 1950 he was recalled to active duty and assigned to a squadron in San Diego. In 1951 he was released to inactive duty and remained in a reserve squadron until present. In civilian life, Flanagan is a civilian liaison engineer for Northrop Aircraft. He lives with his wife Mamie and their 3 year old daughter, Colleen.



NAVAL AIR RESERVIST Chief Willis Flanagan of Torrance explains the intricacies of the Gruan "Tracker" to R. E. Mehan, center, and C. E. Tyler, new members of the Naval Air Squadron reserve unit in Long Beach.

Special Program

A Christmas program will be an added attraction when the South West Park Civic association meets on Tuesday, December 3, 8 p.m., at Carl Steele school. Suzette Fox will dance a tap dance number, several selections will be played by an accordion band from the Ferraro accordion school, and the Carl Steele mothers will sing several Christmas songs under the direction of Mrs. Lorman Griffith. A special treat is planned for youngsters. Nominations for new board members will be accepted at the same meeting.

Plan Repair of Lomita Boulevard

Appropriation for inclusion in the County 1958-59 road budget for the improvement of Lomita Boulevard between Crenshaw and Hawthorne Boulevards was given this week by Supervisor Burton W. Chace. In a letter to George W. Stevens, City Manager of Torrance, Chace stated that if the City of Torrance is able to provide the right of way and plans, he will include the necessary construction funds in the County 1958-59 Road Budget for the improvement of Lomita to conform to existing improvements east of Crenshaw Boulevard.

fuel an liquid sodium to transport the heat to the steam generating facilities. This is accomplished by circulating sodium through the reactor core, thus absorbing the heat. The sodium flows out of the core at a temperature of approximately 960 degrees Fahrenheit. It is then pumped into a vessel which also contains water in separate tubular compartments. The heat converts the water into steam, which in turn spins the blades of the turbine to generate electricity.

BURKE SPECIALIZES

AND HAVE AT THE LOWEST POSSIBLE PRICES

TOYS

- UNPAINTED FURNITURE
- BABY FURNITURE
- OUTDOOR FURNITURE

Also Small Appliances—Hassocks—Giftware
Come See For Yourself
LAY AWAY NOW FOR CHRISTMAS

2113 TORRANCE BLVD., FA. 8-5769
FREE PARKING IN REAR — OPEN FRIDAY NIGHTS

Dramatizing the tremendous stores of energy locked in nuclear fuels, it was pointed out that a ten pound piece of uranium can generate as much power as two and a half million gallons of fuel oil—which is the amount used by Edison in a single day's operation.

HI-FI RECORD CLEANING CLOTH

HOFFMAN

"FLOATING SOUND"

At Last!... Custom Perfect High Fidelity in One Cabinet...
A THRILLING NEW DIMENSION IN HIGH FIDELITY
Exclusive "Floating Sound" chamber encloses 3 Jensen speakers in solid mahogany. Mounted on springs, Hoffman's unique speaker enclosure floats inside the cabinet to prevent vibration of other components from causing feedback or distortion.

NEW FREQUENCY DISPLAY SCOPE — ANOTHER HOFFMAN EXCLUSIVE!

Lets you visually adjust frequency, volume, treble and bass to your personal taste, assuring perfect reproduction for each record. Scope readings can be listed in Hoffman's free Record Reference Guide.

PLUS... all the wanted features that make your Hoffman Hi-Fi the finest in America today!

- 3 matched Jensen speakers
- Garrard 4-speed record changer
- 25-watt Hoffman Amplifier
- AM-FM tuner
- Separate bass & treble controls
- Other custom Hi-Fi components

Model 8002
Modern lined oak in beautiful simplicity. Also available in traditional mahogany, walnut or provincial Salem maple. Identical stylings with AM-FM tuner (Model 8002).....

TV STUDIO

2223 TORRANCE BLVD. SHOP EVERY NIGHT UNTIL 9 P.M.
FA. 8-6856 Except Saturday

LAWSON'S LAY-AWAY NOW FOR CHRISTMAS

DIAMOND VALUES

Diamonds for a Christmas... she'll never forget

Perfect 100 Both for \$100 \$2.00 Weekly

Perfect 200 Both for \$200 \$4.00 Weekly

Perfect 300 Both for \$300 Terms Arranged

Amazing value! 99.00 \$2.00 Weekly

Merry Christmas with all my love

NO MONEY DOWN! TAKE A YEAR TO PAY

Lawson's

JEWELERS

Torrance Phone No. FA. 8-4313

OPEN EVENINGS 'TIL 9:00 P.M. UNTIL CHRISTMAS

SHOP AT YOUR NEAREST LAWSON'S JEWELRY STORE

1317 EL PRADO - Torrance

IN REDONDO BEACH - SOUTH BAY CENTER HAWTHORNE BLVD. at 174th Street

PHONE FR. 9-3424