

**6 GREAT SALE DAYS**  
 NOV. 25, 26, 27, 29, DEC. 1st  
 CLOSED THANKSGIVING DAY, NOV. 28th



# FOODS CO. markets

910 W. Santa Barbara at Vermont

174th and Crenshaw

## ing Feasting

**PAIR FROZEN PUMPKIN or APPLE PIES**  
 REGULAR 55c EA.

**1.00**

**SCUDDER SAUCES**  
**45**

**SPRINGFIELD HALVES or SLICED YELLOW CLING PEACHES**  
 BIG 2 1/2 CAN **19**

**EARLY CALIFORNIA LARGE RIPE OLIVES** 7 1/2-OZ. TALL CAN **29c**

- |          |                                      |       |
|----------|--------------------------------------|-------|
| 37c      | V-8 NEW YORK APPLE SAUCE, 17-oz. can | 21c   |
| 55c      | WESSON COTTON SEED OIL, pint.        | 33c   |
| 3/\$1.00 | COLGATE SOAP, regular bars           | 3/29c |
| 2/29c    | DURKEE'S COCONUT, 4-oz. Pkg.         | 15c   |
| 79c      | DENNISON—40-oz. Can CHILI CON CARNE  | 55c   |
| 50c      | FAB DETERGENT, giant package         | 79c   |
| 3/37c    | HEINZ STRAINED BABY FOODS            | 3/26c |

**Contadina** 25c CONTADINA WHOLE SPICED PEACHES  
 BIG 2 1/2 CAN **19c**

**GOLDEN CREME EGG NOG**  
 NON-ALCOHOLIC QUART CARTON **49c**

**PLANTERS COCKTAIL PEANUTS**  
 WHITE VIRGINIA  
 3 7 1/2-OZ. CANS Reg. 37c **85c**

**S&W BRAND MINCE MEAT**  
 JUMBO SIZE JAR **59c**

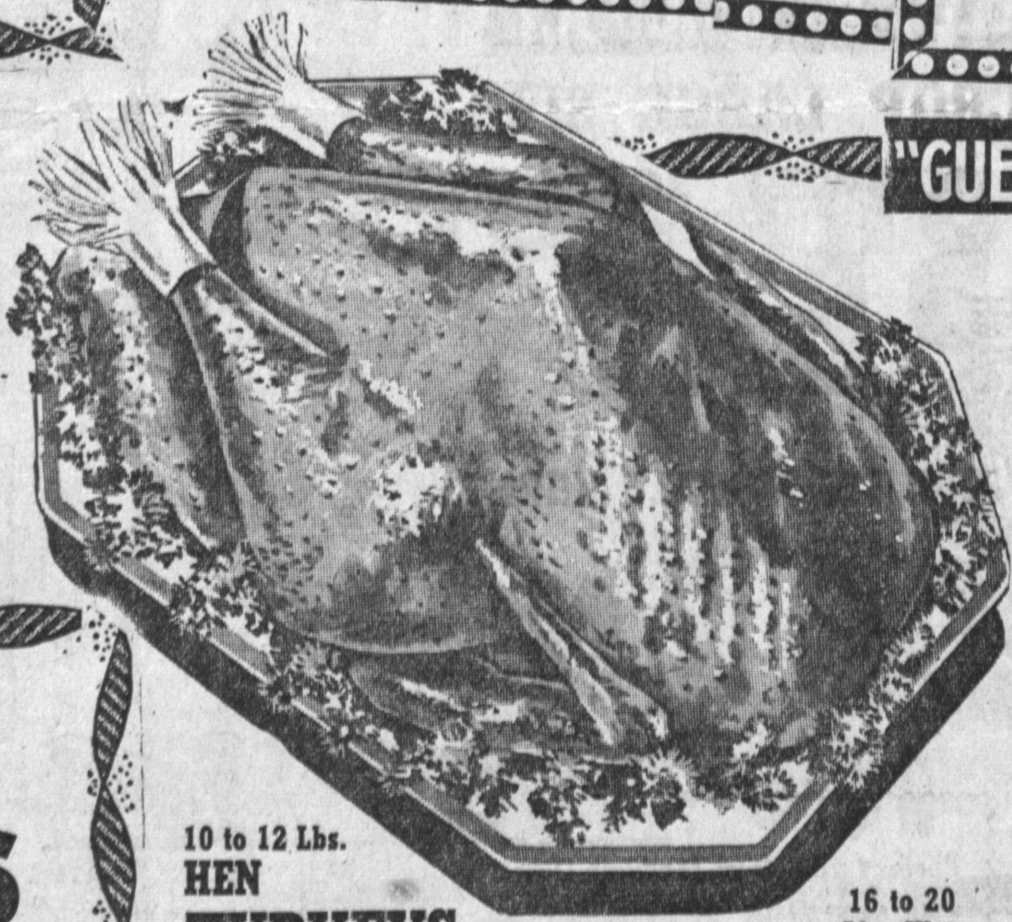
**Betty Crocker CAKES MIXES**  
 33c BETTY CROCKER  
 DEVILS FOOD, YELLOW, WHITE, MARBLE, CHOC. MALT 20-OZ. PKG. **29c**

**WELCH'S CHOC. COATED CORDIAL CHERRIES**  
 LIGHT or DARK CHOCOLATE 13-OZ. PACKAGE **49c**

**BANQUET BONED CHICKEN**  
 4 5-OZ. FLAT CANS **\$1.00**

**DANNY BOY BROKEN SHRIMP**  
 For Thanksgiving Shrimp Cocktails. 5-OZ. TALL CANS **3 for \$1.00**

**WONDER Brown & Serve ROLLS**  
 PACKAGE OF 12 **31c**



**"GUEST QUALITY MEATS"**

**PLUMP, MEATY BROAD BREASTED YOUNG TOM TURKEYS**

10 to 12 Lbs. HEN TURKEYS PER POUND **39c**  
 16 to 20 Lbs. Wgt. 4 to 8 lbs. Jr. Turkeys **49c**

**29** lb

**Ole Smokey Top Grade "A" SLICED BACON**  
 1-LB. PKGS. **57c**

**Ole Smokey ROLLED BONELESS HAM**  
 WHOLE OR HALF OR A CUT FOR ANY SIZED FAMILY **85c** lb.

**FRESH PORK LOIN**  
 FULL RIB HALF 6 to 8 Lb. Avg. Center Cut RIB PORK CHOPS **69c** lb. **49c** lb.

- |                         |           |                      |                   |     |
|-------------------------|-----------|----------------------|-------------------|-----|
| 1/2-pt. Eastern Oysters | 69c       | Caponette Chickens   | Roasting 3-4 lbs. | 49c |
| 12-oz. Western Oysters  | 49c       | Young Ducklings      | 4 to 6 lb.        | 49c |
| Pork Sausage Rolls      | 1-lb. 39c | Northern Fancy Geese | 6 to 8 lbs.       | 55c |

- |                               |       |                                |       |                            |       |                          |       |
|-------------------------------|-------|--------------------------------|-------|----------------------------|-------|--------------------------|-------|
| SUNSHINE CRACKERS, 1-lb.      | 31c   | SWIFT'S BABY MEATS, 2 cans     | 45c   | SWEETHEART SOAP, reg. bars | 3/29c | PACIFIC CRACKERS, 1-lb.  | 27c   |
| TRIVALLEY PEACHES, 8-oz. cans | 2/25c | STOKELY'S — 12-oz. APPLE SAUCE | 2/35c | TREND DETERGENT, 2 pgs     | 39c   | LIQUID TREND, 22-oz.     | 49c   |
| UNCLE BEN'S RICE, 24-oz. Pkg  | 43c   | VETS — Tall Cans DOG FOOD      | 3/25c | VEL DETERGENT, Large pkg.  | 33c   | WELCH GRAPE JUICE, 4-oz. | 3/29c |

**6 GREAT SALE DAYS** NOV. 25, 26, 27, 29, 30, DEC. 1

**174th AND CRENSHAW**