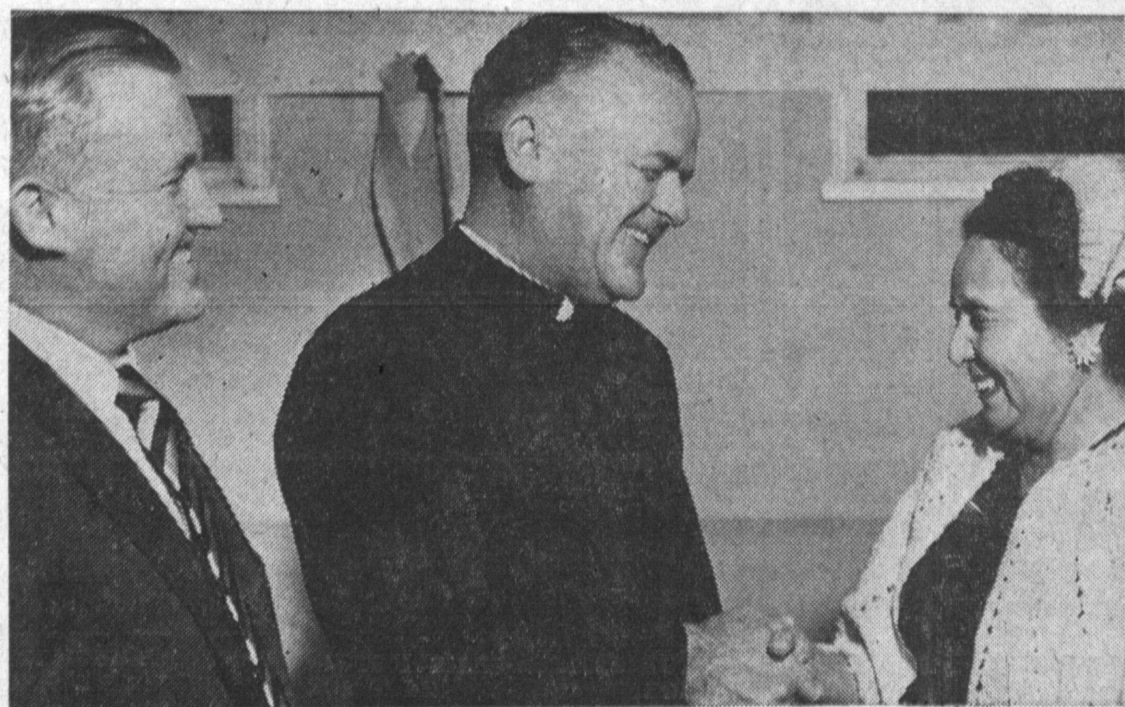


New Department For City of Hope.

Plans for a new Department of Rehabilitation at the City of Hope will be sparked by a \$40,000 contribution from the Sirbu Foundation, it was announced jointly this week by Bert F.

Urbach, president of the Foundation, and Louis Tabak, president of the free and nonsectarian Medical Center. The new Department will include comprehensive facilities and staff for occupational and physical therapy, and vocational and psychiatric counseling.



NEW PASTOR OF NATIVITY CATHOLIC church Rev. Joseph Kelly McArdle, is greeted by Mrs. C. Mata, Saint Joseph Mission church, Pueblo, Altar Society president, as Patrick Mc-

Manus, Nativity Holy Society president, looks on at left. Photo was taken during parish-wide reception for the new pastor, held Sunday at Nativity Catholic school.

LEAGUE SUGGESTS IMPROVEMENTS IN LOYALTY SECURITY PROGRAM

Consensus of opinion on suggestions to improve the Federal Loyalty-Security Programs was reached at October unit meetings of the League of Women Voters of Palos Verdes Estates, which includes women from Torrance and other cities in the South Bay area.

Leagues all over the nation have been studying the federal programs for two years. All are completing the study now and sending their consensus to their state Leagues, where results will be compiled and forwarded to the National League of Women Voters by the first of the year. Results will give the National League the go-ahead to take action when necessary.

Mrs. Richard Blakeley, of Palos Verdes Estates, chairman of the study, reports the consensus as follows:

Scope: Limit the Federal Employees program and the Atomic Energy program to sensitive positions.

Coordination: There should be overall coordination between programs and transference of clearances. A central security of-

fice was not recommended because it would create another bureaucratic organization and would put the stamp of permanency on the programs.

Standards: "Balanced judgment" should be the standard in all programs.

Criteria: These should be consistent throughout all programs with a separation of loyalty cases and suitability cases.

Procedures: Speed up the machinery, provide a complete statement of charges, increase confrontation and subpoena power, reimburse the charged employee for legal fees if cleared and transfer him to a non-sensitive position while awaiting hearing. The Attorney General's list should be reevaluated and updated.

Classification: Such classifications as "secret," "top secret," should be limited and redefined.

Need for the programs: A program is needed but not necessarily the present ones. In philosophy the programs are against League principles and those of the Constitution but the urgency

of the situation makes programs necessary.

Training of personnel: There should be better training for security officers. Hearing boards should have one member a trained lawyer and one member in the same work as the accused (in the case of technical or scientific personnel).

Applicants: These should have a statement of charges and the right to a hearing, when accused.

Guild Will Meet Nov. 18

One of the most active calendars of events for the coming year among women's organizations in the Bay Harbor area is being planned by the Bay Harbor Osteopathic Hospital Guild, according to Mrs. Elizabeth West, ways and means chairman. Rummage, cooked food and handicraft sales, bazaars, dining decoration and place setting demonstrations and a score of other events are being planned by the 150 Guild women from 12 communities of the area, Mrs. West reports.

Deadline for the fund campaign is December 9. At that time the district must present its pledge to the California Department of Public Health for final appraisal and determination as to whether the district has qualified for a Hill-Burton grant of \$594,882 of state and federal tax monies.

Temple To Greet Members

Rabbi Henri E. Front and the congregation of Temple Menorah, 112 N. Catalina, Redondo Beach, will honor the fifty new members who have joined the Temple this year at Friday night religious services, November 15, 8:30 p.m.

The men of the Temple's membership committee will assist the rabbi in conducting the services. They are: Dr. J. Bernard Rivo, chairman, member-

ship committee and Stanley Lieber, Bert Shupps and Phil Weinstein. The women on the membership committee are hosting the one Sabbath. The refreshment table will be decorated with a fall motif of autumn leaves, gourds and a horn of plenty. For the second time since its formation the Temple choir will sing and Dr. Dale Vanderwalker will accompany. The rabbi's sermon for the evening will be "Temple Menorah — A True Community Center."

decorating for the holidays?



ENJOY THE SKILLED HANDS OF HAIR SPECIALISTS

✓ CHECK THESE HOLIDAY SPECIALS
 ✓ INDIVIDUAL STYLING with CONTOUR SHAPING to lock curls in place... **\$3.50**
 Contour Shaping alone **\$2.00**

✓ PERMANENT COLOR BATH also Silver Blending **\$4.95**

✓ our exclusive budget COLD WAVES **\$4.95 and \$5.95**

reg. \$10 TRIPLE OIL... 6.95
 reg. \$15 OIL EMULSION... 7.95
 reg. \$20 LAMOLIN... 9.95

OPEN DAY & NIGHT No Appointment Ever Needed

crowning glory PERMANENT WAVE SHOPS every thing for hair beauty

1115 SARTORI NEXT TO MODE O'DAY FA. 8-9930

2 SWIVEL ROCKERS in SALEM MAPLE FINISH



MODEL "A" \$79.99

Covered with "Quinella," a very durable quilted type fabric. Chair is full 36" high with reversible pillow back cushion. Solid hardwood construction.



MODEL "B" \$49.99

Choice of fine decorator Quinella coverings. Full 36" high, with comfortable foam rubber seat cushion. Solid hardwood construction.

OUR GUARANTEE

● If you buy furniture from us and find it priced for less elsewhere—we will refund the difference, in cash.

1. Merchandise must be TAGGED with lower price.
2. Merchandise must be within a 20 mile area.
3. Our comparison shopper must verify all claims.

WARD-RICHARDS

EXACTLY 1 Mile West of Hawthorne Blvd.

2318 REDONDO BEACH BLVD. REDONDO BEACH

HOURS: Open Daily 'til 9 Saturdays 10 'til 6 Sundays 12 'til 6



JUST LIKE MAGIC!

Restyling • Reupholstering



We'll deliver a modern beauty!

CALL FOR FREE ESTIMATES



Phone FA. 8-3352

LET OUR WONDER-WORKERS MODERNIZE YOUR OLD SOFA!

When you see your old sofa after our complete restyling service, you'll think we've worked magic! Choose from a wide selection of fabrics. Call us today!

SAVE UP TO 50% OF THE COST OF NEW FURNITURE

VAN'S MAPLE and UPHOLSTERY

2083 Torrance Blvd. FA. 8-3352

There's Fresh Fashion at a Tiny Price

Newberrys

YOU USUALLY FIND MORE IN A NEWBERRY STORE

Coats for Fall

Huge Array! Economy Priced!

Discover the coat you've been looking for... designed for dress-up or casual occasions... carefully constructed to give you top fashion PLUS important warmth and durability. You'll like Newberry's selection... our wonderfully low prices!

Reg. 22.94 **\$16.64**

Full-length misses' coat in a luxurious smoky fleece. Millum lined to keep drafts out! In lovely shades of gray, beige or peacock. Sizes: 10 to 18. You can't go wrong with this Newberry quality buy!

REG. \$39.50 **\$25.94**

It's Convenient — the Newberry's Lay-a-way Plan

J.J. Newberry Co.

OPEN MON.-FRI.-SAT. NITE TILL 9 P.M. CORNER SARTORI & EL PRADO, DOWNTOWN TORRANCE