

### New Life Old Strife, Sermon

The first in a series of messages giving an exposition on Romans 8 is to be presented in the South Bay Baptist church, 4565 Sharynne Lane.

Dr. J. C. Brumfield, pastor, in his sermon at the morning worship service at 11 a.m. speaks about "The New Life and the Old Strife."

At 7:30 p.m. he continues with messages directed toward youth as he challenges them with the sermon topic "The Whirlwind of Life."

### World Fellowship

Members of the Harbor Area YWCA and the YWCA's throughout the nation will unite with those in 67 countries overseas where the YWCA is at work, to commemorate World Fellowship Week, November 10-16 Mrs. E. C. Spires president of the local association announced today.

**FABULOUS!** Torrance Press Classified Ads do the amazing as well as the every day. Dial FA. 8-2345 to have one "do things" for you.

### Western Type Dance Planned

Next on the social calendar of the Anna Grancell South Bay Chapter is the "home town jamboree" scheduled for November 16 at 8:30 p.m. in the setting of the Neptunian club, 920 Highland ave., Manhattan Beach.

Guitars, banjos, ten gallon hats and western style regalia will predominate at the shindig, that will feature talented members in a variety show starring "The Golden Girls" and "The Annabellas."

Dancing to a name band and social games of all kinds will be there for guest enjoyment, each to his taste and preference, emphasizes president Mrs. Lee Leeds who explains the program has been planned for young and old alike.

### This I Believe Series Starts

The pastor, Robert A. Wells, will speak at both the 11 a.m. and 7:30 p.m. services this Sunday. He will begin a series of sermons on "This I Believe." This is an answer to questions most often asked, "What does the Bible teach about?" These

### SERRA HIGH SCHOOL TO HOLD OPEN HOUSE

In keeping with the observance of National Education Week, November 10-16, Serra High school will have an Open House on the evening of November 14, beginning at 7 p.m.

The public is invited to attend and visit the classes, shops, band room, science laboratories where demonstrations will be given by students and where student work will be exhibited.

Serra High school was founded in 1950. It is an Archdiocesan Catholic high school administered by the Society of Mary (Marianists) and staffed by members of this religious order and qualified lay instructors. The 600 students now attending the school come from 30 parishes in the Southwest Bay area. The following areas are represented at Serra: Gardena, Hawthorne, Los Angeles, Lawndale, Compton, Torrance, Lomita, Redondo Beach, Manhattan Beach, Hermosa Beach, Palos Verdes, Wilmington, San Pedro.

Besides its 18 classrooms it has fully equipped biology, semi-micro chemistry and physics laboratories, a modern photography darkroom, amateur radio station (K60JG), silkscreen and poster rooms; auto and wood shops, typing, business machines and bookkeeping rooms, library, audio-visual aids room and equipment, band room and cafeteria.

Besides a very complete course of studies in the college preparatory area, the school also offers vocational courses in cabinet work and auto mechanics, and the business department offers courses in typing, bookkeeping, shorthand, commercial law and office machines. The Business Department administers the Commercial Club and Job Placement Bureau. Courses in remedial reading and improving reading skills were introduced this year.

### Annual Bazaar

Torrance Ward Relief Society of the Church of Jesus Christ, 220th and Cabrillo, will hold its annual bazaar on November 8, at 6 p.m.

Baked goods, homemade candy, chili and pronto pups, as well as new and used clothing, aprons, games, dish towels and many other items will be sold. The public is invited.

### Redemption From Adams Fall Sermon Theme

The Lesson-Sermon in each Christian Science church this Sunday is "Adam and Fallen Man." The difference between the accounts in the first chapter and the second chapter of Genesis will be discussed and the way of redemption from the Adam man will be stressed. The Golden Text of the sermon contrasts the two stated origins of man as darkness and light in the words of David the Psalmist, "Unto the upright there aris-

eth light in the darkness" (112:4). God's challenging words to Adam, "Where art thou?" are followed by a statement from the third chapter of Genesis: "I heard thy voice in the garden, and I was afraid . . . and I hid myself" (3:9,10).

**WANT TO BUY A BUSINESS?** See the Business Opportunities in the Torrance Press Want Ads. Also place a "Wanted" ad. Then sellers come to YOU. Dial FA 8-2345.

### Potluck, White Elephant Sale

The Edison PTA family potluck and "White Elephant" sale held last Friday evening was considered a success by Mrs. William Cassida, president.

Mrs. William Ulrich, ways and means chairman stated that over 150 people attended. The association meeting will be held Wednesday, November 13.

Arterial heart disease claimed about 428,000 lives in the U. S. last year.



## 4 NEW Allowances for PENSIONERS!

- ★ Easy Budget Terms
- ★ Free Park & Shop
- ★ 30 Years In Harbor Area
- ★ Open Fridays Until 7:00
- ★ Saturdays Until 1:00

**DRS. SOSS AND KLINE OPTOMETRISTS**

1268 SARTORI, TORRANCE  
Phone: FA. 8-6602  
37 PINE AVE, LONG BEACH  
Phone: HE. 5-6219, HE. 6-6739  
810 AVALON, WILMINGTON  
Phone: TE. 4-5464

Substantial additional assistance to the purchase of glasses is provided by FOUR NEW ALLOWANCES announced by the Bureau of Public Assistance. Come in and learn how easy it NOW is to have the correctly fitted glasses that bring true enjoyment to reading, T-V viewing and every day living. No obligation, of course.



Southwest's

# 4%

IS THE DIFFERENCE . . .



### BETWEEN OLD FASHION ...AND MODERN SAVINGS

Just as yesterday's way of life has changed, habits of saving have changed, too. If your surplus dollars earn less than 4%, it's time to modernize. By offering you the highest possible dividends with the security of insured safety, your SOUTHWEST account grows faster. Learn how Southwest serves you best. Stop in today.

YOUR ACCOUNT EARNS FROM THE 1ST IF OPENED BY THE 10TH OF THE MONTH

each account insured up to \$10,000

assets over \$40,000,000

CURRENT RATE

PAID

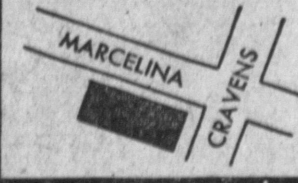
# 4%

# 4

PER ANNUM

TIMES PER YEAR

Southwest Savings AND LOAN ASSOCIATION



TORRANCE

1603 Cravens Ave. (at Marcelina) • FAirfax 8-6111  
MAIN OFFICE: INGLEWOOD

# 58's at 57 PRICES

NEW 1958

## PLYMOUTHs and DE SOTOS

WILL BE SOLD AT 1957 PRICES AS A

# GET ACQUAINTED OFFER

AT YOUR NEW PLYMOUTH AND DESOTO DEALER

# "HOLLYWOOD PARK"



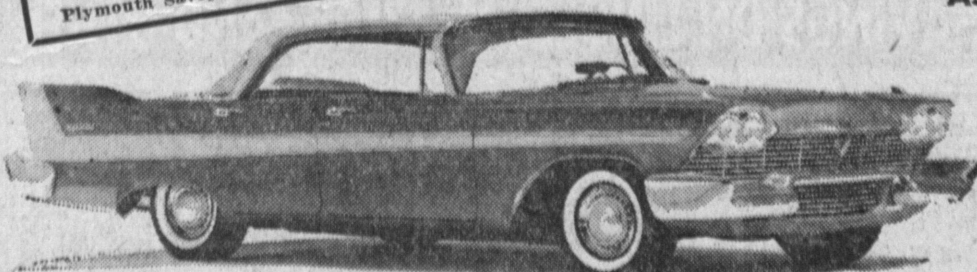
### PLUS...

- ★ 36 MONTHS, BANK FINANCING
- ★ NO CASH NECESSARY, JUST YOUR CAR IN TRADE, PAID FOR OR NOT.

**\$2381**  
Plymouth Savoy 4-Door Hardtop, Std. equip.

• GUARANTEED DELIVERY AS ADVERTISED

**\$2981**  
De Soto Fire Sweep, Std. equip.



JUST

**\$59<sup>63</sup>**

A MONTH

ANY THREE OF THESE EXTRAS ON THE PLYMOUTH SAVOY 4-DR. HARDTOP:

- Torqueflite Trans.
- Radio • Heater
- Tinted Glass
- White Sidewalls
- Power Steering
- Power Brakes

If The Car You Now Own Is Worth Just \$950

JUST

**\$79<sup>81</sup>**

A MONTH

ANY THREE OF THESE EXTRAS ON THE DESOTO FIRESWEEP 2 DOOR HARDTOP.

- Torqueflite Trans.
- Power Steering
- Power Brakes
- Porcelainized and Under Seal
- Radio
- Heater
- Tinted Glass
- White Sidewalls

If The Car You Now Own Is Worth Just \$1,000

# HOLLYWOOD PARK

PLYMOUTH and De Soto

830 S. LA BREA IN INGLEWOOD

OPEN SUNDAY AND EVENINGS TILL 10:00 P.M.

ORchard 4-5270  
OREgon 8-5183