

Margaret Mayer, Ex-Actress, Dies

Mrs. Margaret Mayer, passed away at a local hospital on October 19, ending a colorful career which began in Germany, where she was a well-known actress and producer as well as being active in politics.

She was active in the German Actors' Union, and was nominated to the German Parliament by the German Democrats, but was defeated by a National Socialist (Nazi) in an election that brought Hitler to power.

Dr. and Mrs. Mayer escaped to this country in 1942 and became U.S. citizens.

Mrs. Mayer is survived by her husband, Dr. Arthur W. Mayer, 114 Vista del Mar, Hollywood Riviera.

Mobil Ass'n. Elects 2 Torrance Men

Two Torrance residents have been elected members of the Mobil Management Association of General Petroleum Corp. They are Richard S. Hansler, 21514 Ellinwood drive, and Lyman E. Limbocker Jr., 2309 West 181 st.

Hansler, who joined General Petroleum in 1955, is a member of the engineering department at the Torrance Refinery. Limbocker, who joined last year, is an engineer in the refining department at Torrance.

SPEED YOUR SHIPMENT

ON ITS WAY VIA
PACIFIC ELECTRIC'S
GOOD FREIGHT SERVICE

Getting your supplies in and your product out to market is an essential part of your business for which you rely on the experience, facilities and service of those who handle your goods. That's why wise shippers move their freight by rail—in Southern California by Pacific Electric or its parent company, Southern Pacific, for dependable service to all points, with careful handling, convenient schedules, modern diesel-electric trains and many years of experience.

Your nearby Pacific Electric Agent has the answer to your shipping problem. Let him help you!

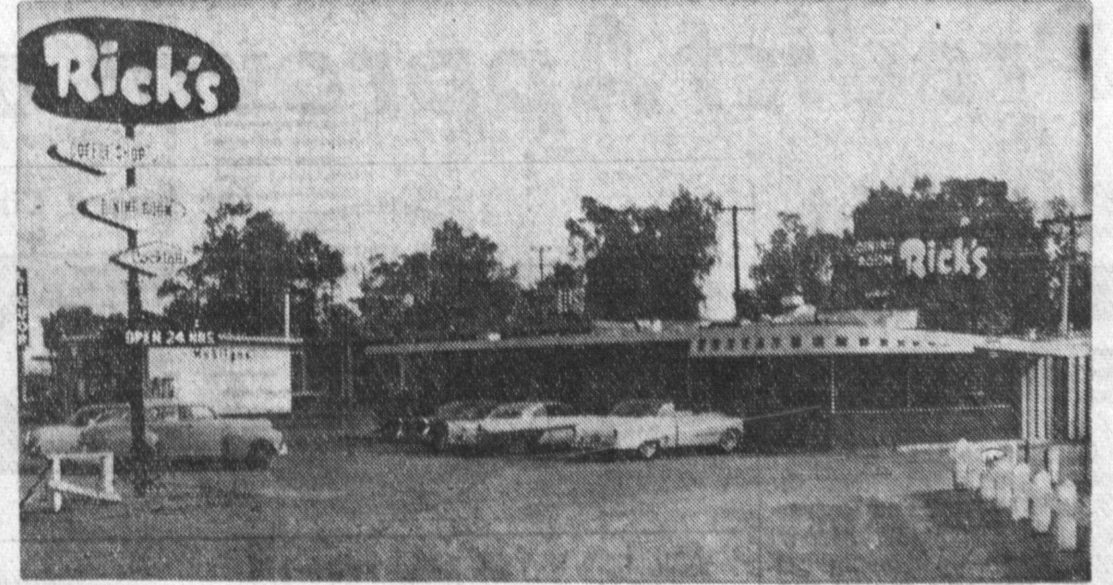


PACIFIC ELECTRIC RAILWAY

K. L. ANDERSON, Local Freight Agent
1200 Border Ave., Torrance—FAirfax 8-6322



CHECK: Hollywood Park Motor's service manager, George Cunningham and owner D. B. "Mickey" Walker, make a final check on a new 1957 De Soto which will be delivered to William L. Grover, executive at North American. Hollywood Park Motors took over from Hague and Thomas on September 16th of this year, and the above car marks one of the more than 100 new 1957 De Sotos and Plymouths delivered to customers since the opening of the new firm.



NEW TORRANCE RESTAURANT has its grand opening October 28, 29 and 30. Rick's, at 21176 Western ave., at the corner of Torrance blvd. and Western, has a dining room,

cocktail lounge, coffee shop and bakery. The coffee shop is open 24 hours, and the cozy and intimate cocktail lounge is open until 2 a.m. Rick Jordan is the proprietor.

New Auto Dealer Expands

Undergoing great expansion since taking over September 16th from Hague and Thomas, is Hollywood Park Motors, De

Soto-Plymouth dealer, 830 South La Brea avenue in Inglewood.

Employing a staff of more than 75, owner D. B. "Mickey" Walker has added new equipment making a total investment of approximately \$50,000 to better serve Centinela Valley residents.

The huge service department, headed by George Cunningham who has had 20 years experience in Southern California in a service capacity, has been increased and now encompasses 5,000 square feet of space.

A new infra-ray paint spray booth has been added and the body work shop has been enlarged to accommodate a greater number of vehicles. According to Walker, great emphasis has been placed on the electrical and tune-up department in order to take care of the six and 12 volt systems on the new De Sotos and Plymouth cars, Walker also emphasized the fact that all service employees of Hollywood Park Motors have been factory trained in order to assure the best work possible in servicing customer's vehicles.

Walker, who has been in the automotive business for the past 10 years, owned a dealership in Dallas, Texas and Beverly Hills before setting up Hollywood Park Motors.

3 Lomita Lads Win in Model Plane Contest

Three Lomita model plane enthusiasts, all 10-years old, will enter their miniature aircraft in semi-final regional contests on November 3 in their quest for top honors in the competition now being conducted by the Los Angeles Area Group of the Air Force.


The three survived preliminary judging of County entries. They will enter the semi-final regional eliminations at the Institute of Aeronautical Sciences in Los Angeles.

In the age 10 to 13 classification for pre-1917 planes, the winner was Thomas Kovich, age 10, 24630 Eshelman ave. Representing Lomita County Park, he modeled a French Spad.

For planes of the 1917-41 flying era, in the 10 to 13 year old category, the best model was a German Fokker D-VII, built by Michael B. Christiansen, age 10, 2325 Lomita blvd.

Ronald Higge, age 10, 24316 Eshelman ave. built a model U.S. Vought-Corsair, of the 1941-50 period, to get top honors for lads from 10 to 13 years old.

KEEP GOODS MOVING through Torrance Press Classified ads! Small cost, big pulling-power! Dial FA 8-2345.



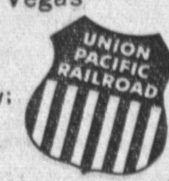
BEATS DRIVIN'

COSTS LESS, TOO!

"City of Las Vegas"

Free buffet meals
Plush Pub Lounge
\$17.99 inc tax, round trip, Los Angeles-Las Vegas

Family Rates Monday thru Thursday: returning any day.



A FLYING SAUCER? A SPUTNIK?

A "WHATSIT" FROM OUTER SPACE?

NO SIR! NO MAM!

IT'S A NORGE DISPENSER WHEEL

And Found ONLY in a

NORGE WASHER

with Dispenser Wheel



Model AW-20

Only Washer that turns rinse water into magic water... automatically!

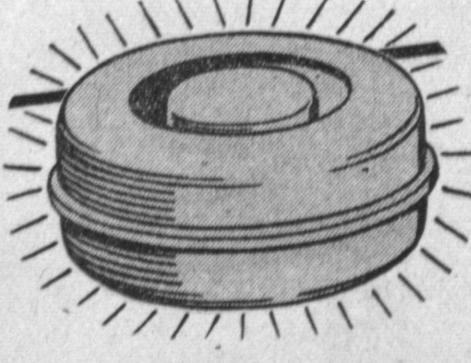
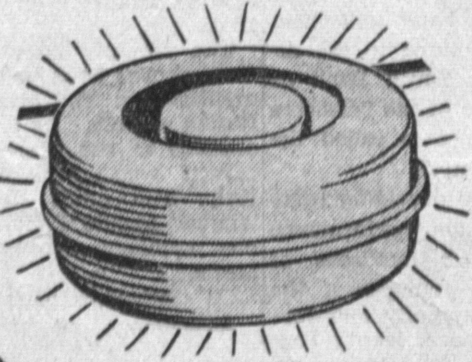
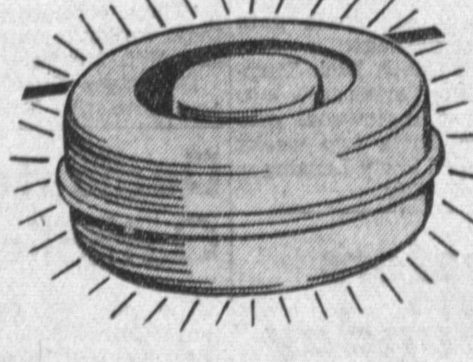
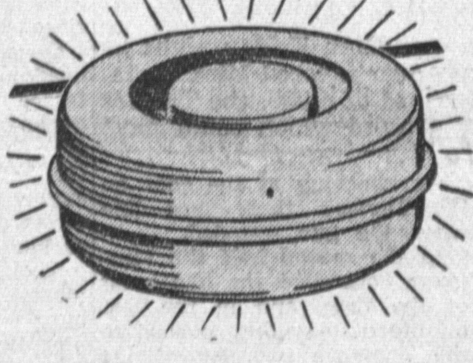
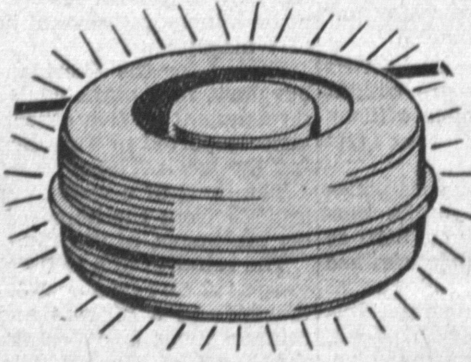
2 AUTOMATIC CYCLES
NORMAL for regular wash
SHORT for dainty things

5 YEAR WARRANTY

ON TRANSMISSION COMPONENTS

- Automatic Hot or Warm Wash
- Automatic Warm or Cold Rinse
- Biggest Agitator made gets clothes cleaner
- 5 separate rinsing actions plus automatic spin out of sediment and sand
- Huge 9 lb. Porcelain Wash Tub
- Super Spindry extracts maximum water

TERRIFIC TRADE-INS! YEARS TO PAY!



Here is the Greatest boon to the housewife since the invention of the first washing machine... and you don't have to go out of this world to see it!

See it today at LIBERTY! YOUR NORGE DEALER

NO MONEY DOWN!

GUARANTEED SERVICE AFTER SALES!

EASY TERMS!

- AUTOMATICALLY REMOVES LINT!
- NO MORE YELLOW, NO MORE GRAY!
- UP TO 39% CLEANER CLOTHES!
- WHITER, BRIGHTER NYLONS!
- SOFTER, FLUFFIER BABY THINGS!
- HELPS PREVENT DIAPER RASH!

LIBERTY HOME APPLIANCES

3445 TORRANCE BLVD. at MADRONA

PHONE FA. 8-5410

IN THE PARAMOUNT BLDG. CENTER—JUST WEST OF CIVIC CENTER—LOTS OF FREE PARKING

OPEN FRIDAY NITE 'TIL 9

SALES and SERVICE

12,000 Ton Press in Operation at Harvey

The largest American-built extrusion press is now in operation at the Torrance plant of Harvey Aluminum.

Capable of exerting a force of 12,000 tons, the giant hydraulic extrusion press is squeezing out aluminum structural shapes for aircraft, missile, and commercial needs.

The 12,000 ton press and a companion 8,000 ton extrusion press presently in production at the Harvey mill are part of the Air Force Heavy Press Program. Supporting facilities in operation at the fully integrated plant include vertical heat-treat furnaces as high as 110 feet, two large stretch-straighteners of 1,500,000 and 3,000,000 pounds capacity, and a array of furnaces, heaters and casting equipment.

The 12,000 ton press, one of the largest in the world, has an over-all length of 300 feet and weighs 4,000,000 pounds. It can extrude aluminum sections from ingots 32 inches in diameter and 75 inches long.

Large one-piece structural shapes replace sections now assembled from smaller components, resulting in substantial savings for airplane and missile manufacturers and other users of heavy extrusions. New high-speed, high-performance missiles require the greatest structural strength possible with weight held to a minimum.

Utilization of Harvey's heavy extrusion presses will enable structural members to be produced at lower cost in quantity production, and offer a high strength-to-weight ratio not possible with conventional methods.

In addition to aircraft, the large structural shapes made possible by the 12,000 and 8,000 ton presses will find uses in the construction of buildings, bridges, truck trailers, ships, buses, railroads, power transmission towers, highway signs, etc.

In the extrusion process, a solid cast billet or ingot is heated to a plastic state, confined within a cylinder, and forced to flow under pressure through a die opening which gives it the desired shape. By simply changing the die, an unlimited variety of hollow and solid shapes can be produced.

Most people object to partial dentures because they have heard of the terrible damage that the wires or clamps do to the teeth to which they are fastened. They think these partial dentures wear out the teeth or cause decay to start underneath the clamps.

Practically all of this can be avoided if teeth are brushed daily and the denture brushed separately in the hand with a good stiff brush using a cleaner than your dentist recommends.

Routine examination by your dentist will keep your partial functioning properly, and any initial decay will be "nipped in the bud."

The importance of partial dentures which few people appreciate is that they keep the remaining teeth from drifting out of position, and they take a lot of the chewing pressure off the remaining teeth.

WOW, WHAT SPEED! Torrance Press Classified Ads often get results within hours. Dial FA 8-2345.

Office 1406 Craven Avenue Torrance, California Telephone: FA. 8-2345

W. E. Zappas, publisher W. E. King, general mgr. Melvin Eiske, managing editor

Subscription Rates Carrier Delivery 45c per month Local and Out-of-town \$12.00 per year (Payable in advance)

All manuscripts are submitted at owner's risk. The Torrance Press can accept no responsibility for their return.

DR. TARR 1311 1/2 SARTORI AVENUE (Above Sam Levy Dept. Store) PHONE FAirfax 8-0250

THE DENTIST SAYS: Partial Dentures Don't Ruin Teeth

By ERNEST J. TARR, D.D.S.

"I have been told that partial dentures ruin the teeth they are anchored to. Is this story true?" asked T. R. of Torrance.

Most people object to partial dentures because they have heard of the terrible damage that the wires or clamps do to the teeth to which they are fastened. They think these partial dentures wear out the teeth or cause decay to start underneath the clamps.

Practically all of this can be avoided if teeth are brushed daily and the denture brushed separately in the hand with a good stiff brush using a cleaner than your dentist recommends.

Routine examination by your dentist will keep your partial functioning properly, and any initial decay will be "nipped in the bud."

Office 1406 Craven Avenue Torrance, California Telephone: FA. 8-2345

W. E. Zappas, publisher W. E. King, general mgr. Melvin Eiske, managing editor