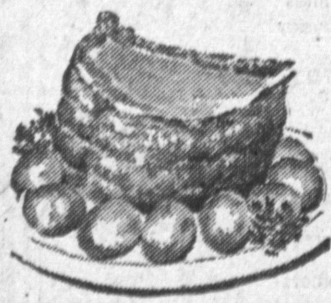


# ARCHIE'S MARKET

## MEATS

ALL MEAT WIENERS	3 Lbs. for	\$1.00
FRESH-LEAN GROUND BEEF	4 Lbs. for	\$1.00
TENDER BABY BEEF LIVER		49¢ lb
ALL MEAT BOLOGNA		39¢ lb
HOFFMAN'S - Cello Pack SLICED BACON		49¢ lb
ALL LEAN-TENDER MEAT—No Bones, No Fat MINUTE STEAK		69¢ lb
NEBRASKA PORK STEAK		49¢ lb
FULL CUTS ROUND STEAK		69¢ lb



**BONELESS BEEF ROASTS**  
ALL MEAT NO WASTE  
**49¢ lb**

CHOICE T-BONE STEAKS **89¢ lb**

## PRODUCE

FRESH CRISP CARROTS		3¢ lb
SOLID-NORTHERN-Head LETTUCE		10¢
FRESH KENTUCKY WONDER BEANS		10¢ lb
WHITE ROSE POTATOES	10 for 25	
NORTHERN-BARTLETT PEARS		10¢ lb
WINTER-Eating or Cooking NEWTON PIPPIN APPLES	6 Lbs. for	25¢
SWEET CANTALOUPE		10¢ ea

## Food Buys!

LADY'S CHOICE—Pure—Full Quart Jar GRAPE JELLY		33¢
PREMIUM SNOWFLAKE—Box CRACKERS		21¢ lb
FRESH, LARGE LOAVES SLICED BREAD		18¢

### CAL RAY COOKIES

Chocolate Nuggets, Dane-T-Bits, Sierra Cremes, Danish Assort. Creme Sand., Sierra Mints.  
**4 for \$1.00**



Pack of 6 Hamburger Rolls

**13¢**

OVEN FRESH—NOT DAY OLD

# ARCHIE'S MARKET

FA. 8-9716  
1617 Cabrillo Ave. - Torrance  
(3 DOORS WEST OF BUS STATION)

## Appeal Made For Needy Beta Sigma Phi Holds Meeting Temple Education Session

Continuing its appeal for used clothing, furniture and household articles, the St. Vincent de Paul Society receives its greatest demands for charity during the fall and winter, the Rt. Rev. Msgr. James E. Dolan, director said today.

Needed for Southland poor and low income families are such home furnishings as chairs, tables, beds, stoves, dressers, lamps, heaters and essential home appliances, as well as warm clothing for adults and children of all sizes.

Materials can be donated by calling TRinity 8145, Los Angeles; TErminAl 4-4533, Harbor area; POplar 3-5174, San Fernando Valley; SYcamore 9-1127, Pasadena area, or HEMlock 7-2330, Long Beach.

Executive board of the South Bay Area Council of Beta Sigma Phi held its regular monthly meeting recently at the home of Mrs. Dave Dawson, 2511 W. 166 pl., Gardena.

Plans were completed and tickets were distributed for the second annual Halloween dance on October 26 at the Club Alondra, Lawndale. Plans were formulated for the council Christmas party. Miss Blanche Wright, president, presided at the business meeting.

Members attending were Miss Blanche Wright, Mmes. Don Fisher, Carl Andress, John Timko, and hostess.

**KEEP GOODS MOVING** through Torrance Press Classified ads! Small cost, big pulling-power! Dial FA 8-2345.

An Adult Education discussion will be held following the services, Friday, October 25, at Temple Menorah.

The discussion subject will be entitled, "Jews of Biblical

Times—What Were They Really Like?" This will be followed by a short 16 mm. sound film in color as an aid in group discussion.

The discussion will be led by George Lewison.

Eight of the 34 presidents of the United States were natives of Virginia.

The U. S. is the biggest customer for Panama's principal agricultural product—bananas.

### Aircraft Workers

YOU CAN BUY  
**FURNITURE and APPLIANCES**  
FOR  
**NO CASH DOWN**  
McMAHAN'S FURNITURE STORES  
1306 SARTORI FA. 8-1252 TORRANCE

## BOWL-O-DROME

WESTERN at 220th FA. 8-3760

— Open 24 Hours A Day —

FREE INSTRUCTIONS  
FREE BABY SITTER  
NURSERY and PLAYGROUND  
**Monday to Friday**  
9 A.M. To 5 P.M.

**Nancy Mogard, Instructress**  
COFFEE SHOP — BILLARDS — BOWLING

# The Largest Selection Of Early American Occasional Chairs in So'west Los Angeles



Choose from many styles, many fabrics, many patterns... you've never seen anything like our selection. Literally - a chair to fit ANY provincially furnished home in the Southland!

2 at	17 <sup>99</sup>	14 at	49 <sup>99</sup>
4 at	24 <sup>99</sup>	1 at	59 <sup>99</sup>
7 at	29 <sup>99</sup>	2 at	69 <sup>99</sup>
15 at	39 <sup>99</sup>	6 at	79 <sup>99</sup>
2 at	89 <sup>99</sup>		

**OUR GUARANTEE**

● If you buy furniture from us and find it priced for less elsewhere—we will refund the difference in cash.

1. Merchandise must be TAGGED with lower price.
2. Merchandise must be within a 20-mile area.
3. Our Comparison Shopper must verify all claims.

# WARD-RICHARDS

EXACTLY 1 Mile West of Hawthorne Blvd.

2318 REDONDO BEACH BLVD.  
REDONDO BEACH

**HOURS:** OPEN DAILY 'til 9  
Saturdays 10 'til 6—Sundays 12 'til 6