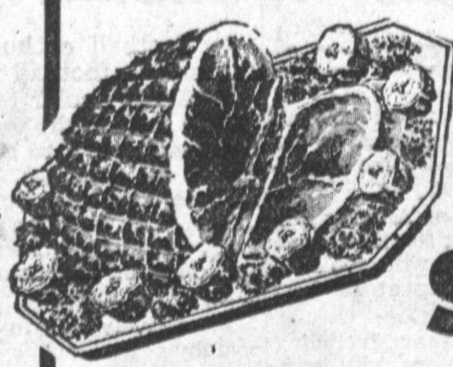


CUT-UP
 YOUNG, TENDER, PLUMP
 THE VERY FINEST, WASTE-FREE
STEWING CHICKENS

29 ^c
 lb.

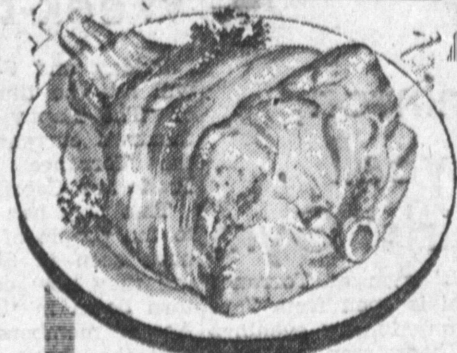


LUER'S . . . THE FINEST
 LEAN EASTERN CORN-FED
 DELICIOUSLY SWEET AND EXTRA TENDER
 SHANK PORTION . . . LARGE PARTS TO BAKE

SMOKED HAM

BUTT
 END **55** ^c
 lb.

CAMP'S FROZEN LAMINATED
BEEF STEAK
 TWO 2-OZ. STEAKS IN PKG.
4 PKGS. **\$1** 00
 for



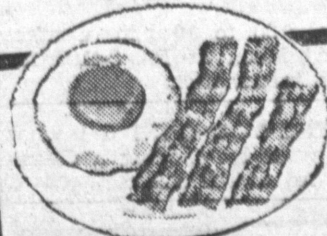
FANCY TENDER MILK-FED
 FULL CUTS
 NO STEAKS REMOVED
LEG VEAL
33 ^c
 lb.

43 ^c
 lb.

FANCY MILK-FED, TENDER JUICY
VEAL SALE!

VEAL CHOPS
 FANCY TENDER
 MEATY
 MILK-FED RIB
 OR KIDNEY CHOPS **49** ^c
 lb.

TENDER MILK-FED MEATY SHOULDER
VEAL ROAST **28** ^c
 lb.
 FANCY MEATY . . . SELECT
VEAL BREAST **12** ^c
 lb.



**LUER'S
 GRADE A
 THE VERY FINEST
 LEAN EASTERN
 CORN-FED**

CELLO WRAPPED PACKAGES

**SLICED
 BACON** **59** ^c
 lb.

U. S. D. A. CHOICE
 EXTRA TENDER AND
 EXTRA JUICY, WELL TRIMMED AND AGED
 GRAIN-FED STEER BEEF

**PRIME RIB
 ROAST** **69** ^c
 lb.
 OVEN
 READY



GRADE A
HEN

TURKEYS
 FINEST
 OVEN-READY
 SELECT
 WASTE-FREE **39** ^c
 lb.

**Clark
 Markets**

**DELICATESSEN
 SPECIALS**

FINEST QUALITY
 WAFER SLICED
**PIMIENTO
 LOAF**
49 ^c
 lb.

FINEST QUALITY
 U. S. GOVT. INSPECTED

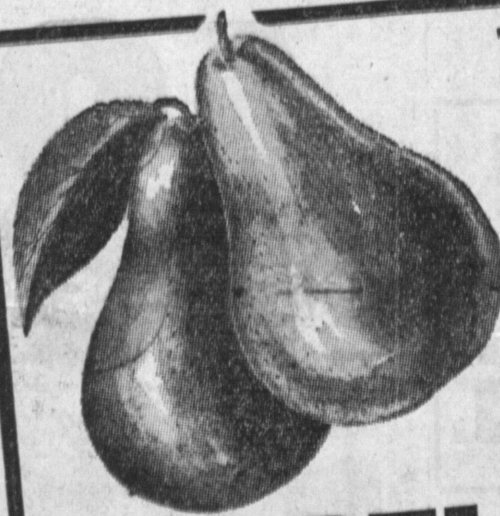
**KOSHER STYLE
 SALAMI**

49 ^c
 lb.

RICH, CREAMY
 WHOLE MILK
**LONGHORN
 CHEESE**

49 ^c
 lb.

HORMEL
 READY-TO-EAT
 WASTE-FREE
PICNIC
4 **\$2** 89
 POUND CAN EACH



**EXTRA
 FANCY**
 . . . LARGE
 SWEET
 LUSCIOUS

**BARTLETT
 PEARS**

THE VERY FINEST

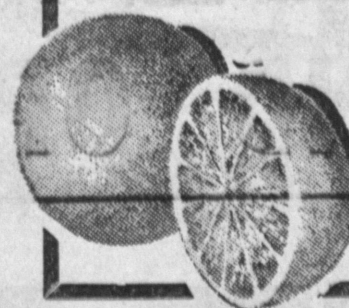
2 lbs. **19** ^c

**Clark
 Markets**

Farm-Fresh Produce

VALENCIA ORANGES

SWEET . . . JUICY, LARGE SIZE



5 lbs **29** ^c

FARM-FRESH
 THICK MEATED
**BANANA
 SQUASH**

3 ^c
 lb.

NEW CROP
 SELECT

**BRAZIL
 NUTS**

29 ^c
 lb.

Flaming Red . . . Sweet Full Bunches, Select

TOKAY GRAPES **2** lbs **15** ^c

PREAM
 GOES AS FAR AS
 A PINT OF
 COFFEE
 CREAM! **31** ^c

BAKER BOY, SLICED
 CINNAMON-NUT
CONFECTION ROLL
 11-OUNCE
 CELLO PKG. **49** ^c

TOM SAWYER
POTATO CHIPS
 FULL 1/2-LB.
 PACKAGE **49** ^c

SCOTKINS
 PAPER NAPKINS
2 PACKAGES
 OF 50 **35** ^c

CUT-RITE
 WAXED PAPER
 125-FOOT
 ROLL **27** ^c

SCOTT
 HOUSEHOLD TOWELS
2 50-COUNT
 PKGS. **39** ^c

SOFT-WEVE
 Facial Quality Tissue
 REGULAR
 ROLL **14** ^c

SCOTTIES
 FACIAL TISSUE
 400-COUNT
 PKGS. **29** ^c

AMERICA'S FAVORITE
WESSON OIL 65 ^c
 Quart Bottle
 VAN CAMP'S
CHILI & BEANS 29 ^c
 15-oz. Can
 UNCLE-BEN'S
RICE 21 ^c 41 ^c
 15-oz. Pkg. 28-oz. Pkg.
 STAR-KIT CHUNK
WHITE TUNA 35 ^c
 No. 1/2 Can
 SNOW'S
CLAM CHOWDER 29 ^c
 15-oz. Can
 LIBBY'S HALVES
CLING PEACHES 21 ^c
 No. 308 Can
 LIBBY'S CRUSHED
PINEAPPLE 27 ^c
 No. 2 Can
 LIBBY'S WHOLE SWEET
PICKLES 37 ^c
 12-oz. Jar
 ALL PURPOSE DETERGENT
TREND 2 for 39 ^c
 Large Packages

TABLE SYRUP
VERMONT MAID 12-oz. Jar 33 ^c
 VAN CAMP'S
TENDERONI 6-oz. Pkg. 13 ^c
 BABY CEREALS, ASSORTED
PABLUM 8-oz. Pkg. 23 ^c
 IXL
LASAGNE 40-oz. Can. 55 ^c
 LIBBY'S - 303 Can
PEAS and CARROTS 21 ^c
 HEINZ STRAINED
BABY FOOD Regular 3 for 29 ^c
 Jar
 LIBBY'S
VEAL LOAF 7-oz. Can. 33 ^c
 LAUNDRY BAR SOAP
FELS NAPHTHA Regular 10 ^c
 Cake
 ALL PURPOSE DETERGENT
TREND Giant 49 ^c
 Size

OPEN 7 DAYS A WEEK
 FROM 9 TO 10

- **PUENTE**
 AT ELLIOT AVENUE
 IN LA PUENTE
- **SEPULVEDA**
 AT MARINE AVENUE
 IN MANHATTAN BEACH
- **OLIVE**
 AT WILMINGTON BLVD.
 IN COMPTON
- **VERMONT**
 AT 140TH STREET
 IN GARDENA

AMPLE FREE PARKING

**Clark
 Markets**

"FAMOUS FOR LOWER FOOD PRICES!"

8 FRIENDLY CLARK MARKETS
 TO SAVE YOU MORE

- **HWY. 101**
 AT HAWTHORNE BLVD.
 IN TORRANCE
- **CRENSHAW**
 AT COMPTON BLVD.
 IN GARDENA
- **WESTERN**
 AT IMPERIAL AVENUE
 IN LOS ANGELES
- **CLARK**
 AT ROSE STREET
 IN BELLFLOWER

LIMIT RIGHTS RESERVED