

U. S. D. A. GRADED CHOICE
AND CLARK'S "WONDERFUL" TENDER, JUICY, MEATY
WELL AGED AND WELL TRIMMED GRAIN-FED

ROUND STEAK

OR

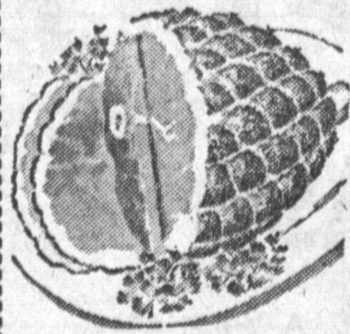
RUMP ROAST

67 ^c lb

U. S. GOVERNMENT INSPECTED
THE VERY FINEST, YOUNG, TENDER, PLUMP, WASTE-FREE

**CUT-UP
FRYING
RABBITS**

49 ^c lb



IOWA BRAND, LEAN EASTERN

CORN-FED... TENDER
DELICIOUSLY SWEET

**SMOKED
PICING**

37 ^c lb

MACLEAN'S... FRESH-FROZEN
FROM THE COLD WATERS OF ICELAND

BREADED FILLETS

WASTE-FREE, PAN-READY
● PERCH ● SOLE ● HADDOCK

YOUR CHOICE
10-OZ. PKG.
39 ^c pkg.

Fresh Caught, Pan-Ready
FILLET SEA BASS **39** ^c lb

Fresh Caught, Pan-Ready
FILLET HALIBUT **45** ^c lb

Fresh Caught, Pan-Ready
FILLET SOLE **63** ^c lb



ARMOUR'S
MATCHLESS
BRAND
LEAN EASTERN
CORN-FED

ALL LEAN CENTER SLICES
CELLO WRAPPED PACKAGES

**SLICED
BACON**
59 ^c lb.

FRESH, TENDER
**SLICED
BABY STEER**

**BEEF
LIVER**
39 ^c lb.

**Clark
Markets**



U. S. GOV'T INSPECTED

**FRESH
LIVER
SAUSAGE**

39 ^c lb

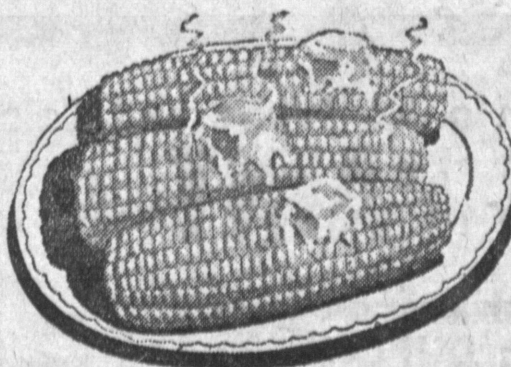
FINEST QUALITY

**SLICED
PIMIENTO
LOAF**

49 ^c lb

RICH CREAMY, WHOLE MILK
**LONGHORN
CHEESE**

49 ^c lb.



YOUNG
TENDER
SWEET
LUSCIOUS FULL
EARS

THE VERY BEST
GOLDEN
CORN
... EACH

4 ^c ea



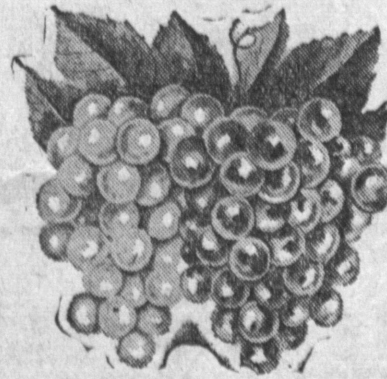
**GREEN
BEANS**

FARM-FRESH
YOUNG, TENDER
KENTUCKY
WONDER

10 ^c lb.

**Clark
Markets**

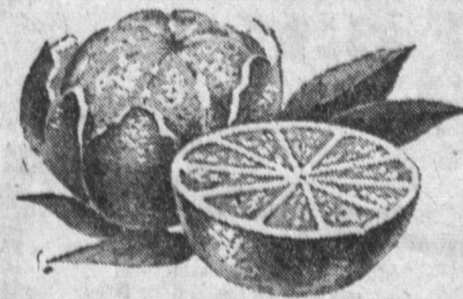
Farm-Fresh Produce



**SEEDLESS
GRAPES**

LARGE FULL BUNCHES
SWEET... PLUMP
THE VERY FINEST
THOMPSON

9 ^c lb



ORANGES
SWEET VALENCIA
BEST FOR JUICE

5 POUNDS IN
CELLO BAG **29** ^c

SAVE ON RAINCOATS
FOR YOUR FAMILY

\$5.95 VALUE
2.00 EACH
COAT
plus end flaps from any
Peppodent Toothpaste carton
or guarantee strip from
Peppodent Toothbrush vial.
PEPSODENT
TOOTH PASTE 39¢ / 49¢ / 65¢ / 79¢
TOOTH BRUSHES 69¢
GET ORDER BLANKS AT OUR STORE

SUNSHINE, FRESH BAKED
Graham Crackers 10-oz. pkg. **25** ^c
ZEE FAMILY PACK
TISSUE 4 ROLLS FOR **33** ^c
PURR-All Tuna, Red Meat The Catillac of pet foods 2 NO. 1/2 CANS **25** ^c
SANITARY NAPKINS **45** ^c
MODERN PKG. OF 12
WAXED PAPER
CUT RITE 125 Foot Roll **27** ^c

Breakfast Cereal 20-oz. Pkg. **39** ^c
CREAM OF RICE 20-oz. Pkg. **39** ^c
GLORIETTA Fancy
TOMATO JUICE Big 46-oz. Can. **26** ^c
Downy Flake
FROZEN WAFFLES 2 Reg. Pkgs. **35** ^c
LIBBY'S
SLICED BEETS Can. No. 303 **17** ^c
LIBBY'S
BEEF STEW Large 24-oz. Can. **43** ^c
Cake Laundry Soap
FELS NAPTHA Reg. Cake **10** ^c
Twenty Mule Team
Borax Powder Lb. Pkgs. **19** ^c 2-lb. Pkg. **33** ^c
CROWN-PRINCE
HORSE MEAT Large Cans **2** for **39** ^c

CHICKEN OF THE SEA 10-oz. Can. **31** ^c
OYSTER STEW CAMPFIRE Lb. Pkg. **39** ^c
MARSHMALLOWS Libby's Frozen **19** ^c
PINEAPPLE JUICE 6-oz. Can. **19** ^c
LIBBY'S
FRUIT COCKTAIL 2 8-oz. Cans **29** ^c
LIBBY'S
PINEAPPLE JUICE 2 No. 2 Cans **29** ^c
Deodorant Soap
DIAL Bath Size 2 for **37** ^c Reg. Cakes 2 for **27** ^c
Laundry Flakes
BLU-WHITE 9-oz. Pkg. **26** ^c 4-oz. Pkgs. **10** ^c
Household Cleanser
BAB-O 2 Gt. Cans **41** ^c 2 Reg. Cans **29** ^c

CHEF BOY-AR-DEE Large 40-oz. Can. **59** ^c
RAVIOLI BIRDS EYE Fresh Frozen 10-oz. Pkgs. **22** ^c
CUT GREEN BEANS DENNISON'S CHILLI and BEANS 15-oz. Can. **29** ^c
HILLS BROS.
INSTANT COFFEE 2-oz. Jar. **55** ^c
ARMOUR'S
DASH DOG FOOD Lg. Can. **16** ^c
GOODWIN'S
AMMONIA Pint **14** ^c Qt. **25** ^c
PUREX Dry Bleach
BEADS O' BLEACH Gt. Pkg. **59** ^c 18-oz. Pkg. **39** ^c
BON AMI Household
POWDERED CLEANSER Reg. Can. **15** ^c

**OMEGA
SHOE WAX**
Make old shoes look like NEW in sixty seconds.
Used by Professionals 10 to 1
REG. CAN **19** ^c

MOTHER'S PRIDE
ASSORTED
**SODA
POP**
● STRAWBERRY
● ORANGE
● COLA
1/2-gal. Bottle **39** ^c
(Plus Deposit)

WISHBONE
ITALIAN DRESSING
8-Oz. Jar **37** ^c 16-Oz. Jar **59** ^c

WISHBONE
FRENCH DRESSING
8-OZ. JAR **29** ^c

WISHBONE
ROQUEFORT-CHEESE DRESSING
8-OZ. JAR **49** ^c

ALCOA
ALUMINUM
WRAP
25-FT. ROLL **29** ^c

VOGUE
ALL PURPOSE DETERGENT
Lg. Pkg. **23** ^c Gt. Pkg. **45** ^c

CITRUS
GRANULATED SOAP
GT. SIZE PKG. **55** ^c

OPEN 7 DAYS A WEEK
FROM 9 TO 10

- **PUENTE**
AT ELLIOT AVENUE
IN LA PUENTE
- **SEPULVEDA**
AT MARINE AVENUE
IN MANHATTAN BEACH
- **OLIVE**
AT WILMINGTON BLVD.
IN COMPTON
- **VERMONT**
AT 140TH STREET
IN GARDENA

AMPLE FREE PARKING

**Clark
Markets**

"FAMOUS FOR LOWER FOOD PRICES!"

8 FRIENDLY CLARK MARKETS
TO SAVE YOU MORE .

- **HWY. 101**
AT HAWTHORNE BLVD.
IN TORRANCE
- **CRENSHAW**
AT COMPTON BLVD.
IN GARDENA
- **WESTERN**
AT IMPERIAL AVENUE
IN LOS ANGELES
- **CLARK**
AT ROSE STREET
IN BELLFLOWER

LIMIT RIGHTS RESERVED