

CHECK THESE PRICES
DOOR HOOD
 Full 40 1/2" wide, using 3 ft. panels. Wings extra. **18⁸⁸**
 Completely Installed
WINDOW AWNING
 Full 31 1/4" wide, using 30" panels. Includes full sides. **18⁸⁸**
 Completely Installed
Full 8'x10' PATIO COVER
 Includes under structure and 6" trim. **124⁸⁸**
 Completely Installed

Deal Locally
 Direct with Owner
KOOL METAL AWNING CO.
 Call Day or Night
 FR. 9-1213 - DA. 6-6186

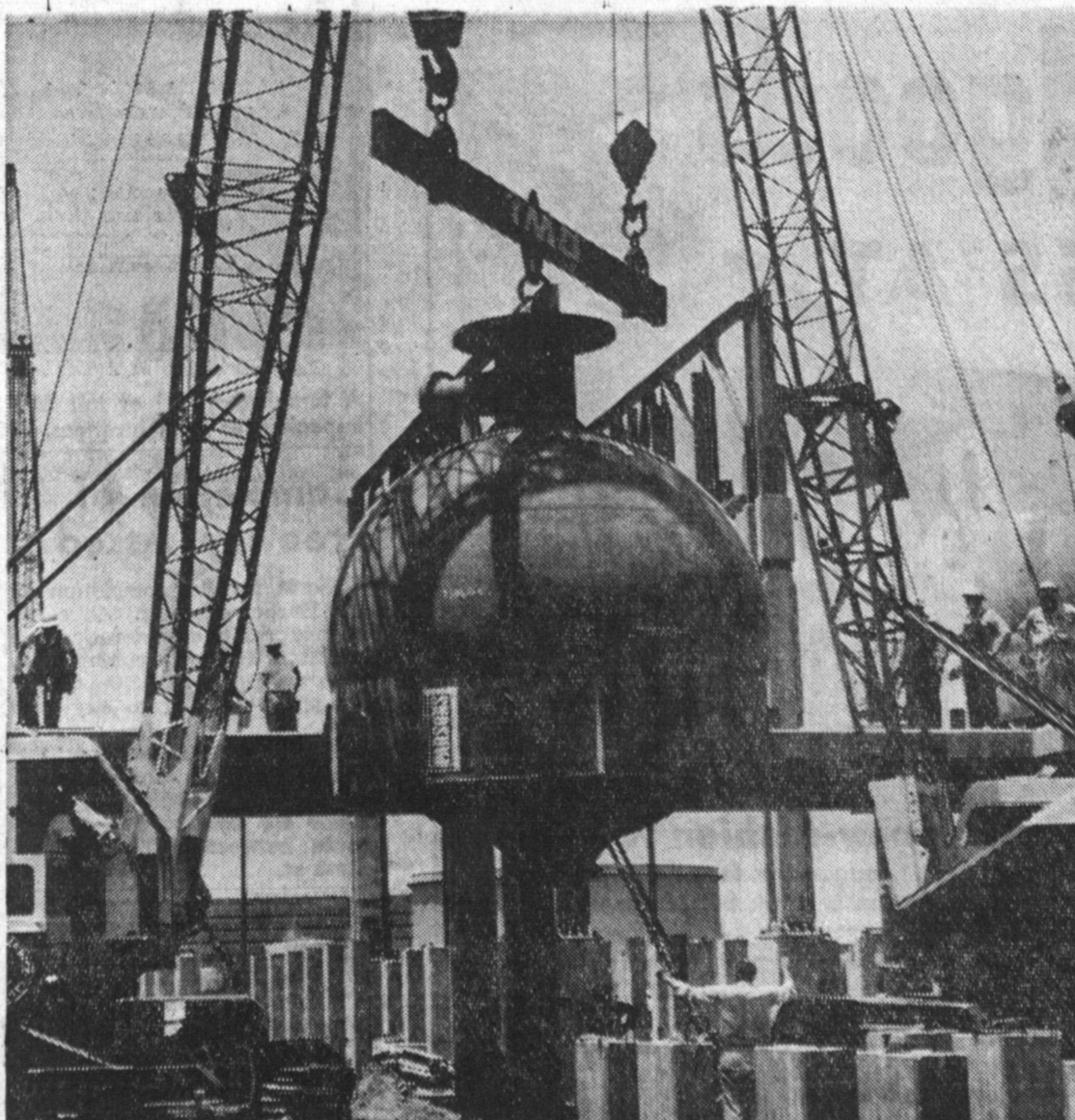
10% DOWN
 36 Months to Pay
 Free Estimates

Work Nears Completion On Reformer

Work is nearing completion on the new 12,000 barrel daily catalytic reformer at General Petroleum corporation's Torrance refinery, company officials announced today.

The reformer, which is being constructed by the Ralph M. Parsons co. of Los Angeles, is the third to be built at General Petroleum refineries. The Torrance project is expected to be completed in the fall.

SAVE A DAY! Let a Torrance Press Classified Ad do the "impossible" for you! FA-8-2345.



GIANT 'MUSHROOM' MOVES IN

One of three spherical reactors at the new catalytic reformer being built at General Petroleum Corporation's Torrance refinery is raised by two cranes for setting on foundations. Each reactor is about 20 feet high and weighs 100,000 pounds. These vessels will be set on roller bearings to permit travel when attendant piping expands during operation.

Paul Binstead Joins Alter Realty Firm

Alter Realty & Insurance is pleased to announce and to welcome Paul Binstead, who has been located at the Paul Binstead office, 24017 Narbonne Ave. for the Realtors, as their 12th office in last 3 years.

Alter Realty & Insurance is proud to merge this office in their growing number of offices in this growing area of Lomita. Mr. Binstead will still be available to service his many customers in that area, and will have the advantage of the backing of the large Alter staff.

The Alter Realty Corporation, which some time ago started the idea that a number of offices, closely connected together could furnish a better service to the public is rapidly approaching that goal, with 12 offices, all within a 5 mile radius of the main offices in downtown Torrance, and most of these offices connected together with private lines from our main PBX board, all will be so connected when lines are available. This, coupled with a nearly complete company maintained ownership service, plus the services of 4 Realty Boards of which they are members.

The Company has a staff of full-time accountant, PBX Operator, and cashier, listing secretary, and a maintenance man, maintains 2 photo copy machines, and 2 duplicating machines.

Guard Unit Training at Camp Roberts

Company 'E' of the 132nd armored engineer battalion is presently undergoing its most intensive training at Camp Roberts since the Korean War, according to its public information officer Nap Bilodeau.

The local unit will be based at the world's largest training camp for two weeks. Combat training will be emphasized to the men of the local unit under the command of Capt. Douglas (Dutch) Horlander.

Torrance company 'E' is the bridge building company of the 132nd armored engineer battalion which is composed of units from Burbank, Manhattan Beach, Redwood Beach and San Pedro.

The 132nd AEB is under the command of Lt. Col. William Geissert who recently was commended for 15 years of distinguished service with the Southern California National Guard. Lt. Col. Geissert is associated with the Union Oil co. and is a resident of the Hollywood Riviera.

Bilodeau also states that any relative wishing to contact any of the guardsmen at camp in case of an emergency are to contact the local Red Cross of their respective area.

ANDERSON RECEIVES GOLD PIN

Harold J. Anderson, 711 Columbia Ct., Torrance, has been presented with a gold pin commemorating 20 years service with Douglas Aircraft company, it was announced by T. E. Springer, vice president-general manager of the company's El Segundo division.

Anderson is part of the Douglas El Segundo team of over 25,000 people currently producing high performance military aircraft for the U.S. Navy, including the A3D Skywarrior, A4D Skyhawk, F4D Skyray, F5D Skyraider and the AD Skyraider series.



BACK TO SCHOOL FOR THEM MEANS WESTERN AVENUE BAPTIST DAY SCHOOL

KINDERGARTEN
 FIRST GRADE
 SECOND GRADE

Because of these advantages:

1. Full Day Sessions
2. No Overcrowding
3. Individual Attention
4. Approved Curriculum
5. New Buildings
6. Christian Training
7. Select Student Body
8. Reasonable Tuition
9. Experienced Christian Teachers Who Are Concerned for the Individual
10. Emphasis on the 3 R's

For Information and Application Phone DAvenport 6-0595

CHILDREN OF ALL FAITHS ACCEPTED

Through the years...



has constantly crusaded for **BETTER MILK** at **LOWER PRICES**

RALPHS MILKS CONSISTENTLY WIN GOLD MEDALS FOR HIGHEST STANDARDS OF PURITY AND QUALITY.

AND, THERE'S A RALPHS MILK FOR EVERY PURPOSE:

Extra-rich **GOLDEN PREMIUM** for "build-up" diets and to promote sturdy growth and health of children;
 'Way above standard **VITAMIN D** milk for all-'round use;
 Delicious **FULL-FLAVOR NON-FAT** milk for dieting that tastes good!
 Only the fat removed . . . calcium and other vital minerals actually increased;
SKIM-MILK, too . . . **BUTTERMILK** . . . and **CHOCOLATE DAIRY DRINK**



... all processed under conditions of scrupulous cleanliness, with delivery direct from Ralphs own creamery to Ralphs 35 stores! Just one more reason why, for 84 years, and today, too...

IT'S SMART TO SHOP AT **Ralphs**



South Bay Store

Redondo Beach & Hawthorne Blvds. at 174th St.
 Open seven days a week, from 9 A.M. until 10 P.M.

Drive Home a New PLYMOUTH From **HERMAN MILLER**

\$ **1**

9

5

DOWN

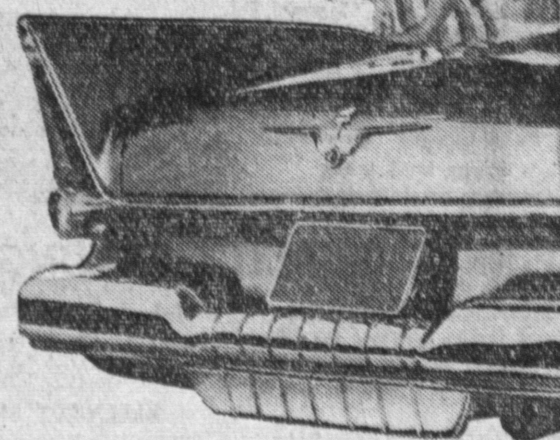
PLUS LIC. & TAX (on approved credit)

BRAND NEW 1957 PLYMOUTH

100 in Stock to Choose From

Including

- CONVERTIBLES
- STATION WAGONS
- FURYS



5% BANK Financing Available

OPEN NITES TILL 10 P. M.

HERMAN MILLER

EXCLUSIVELY PLYMOUTH 1600 CABRILLO — FA. 8-6161 TORRANCE