

# SMART SHOPPERS SAVE MORE MONEY Here

## MEAT DEPT.

### STEAK SALE

|                                           |           |       |
|-------------------------------------------|-----------|-------|
| WELL TRIMMED<br><b>T-BONE STEAK</b>       | <b>79</b> | c lb. |
| THEY ARE TENDER                           |           |       |
| <b>PORTERHOUSE</b>                        | <b>89</b> | c lb. |
| LEAN — TENDER                             |           |       |
| <b>SIRLOIN TIP</b>                        | <b>79</b> | c lb. |
| TENDER — JUICY                            |           |       |
| <b>RIB STEAKS</b>                         | <b>55</b> | c lb. |
| LEAN — TENDER                             |           |       |
| <b>RUMP ROAST</b>                         | <b>59</b> | c lb. |
| THEY ARE LEAN                             |           |       |
| <b>CHUCK STEAK</b>                        | <b>49</b> | c lb. |
| LEAN, TENDER<br>SHOULDER                  |           |       |
| <b>ROLLED ROAST</b>                       | <b>59</b> | c lb. |
| KINGAN'S SILVER SHIELD or LUER'S EVERGOOD |           |       |
| <b>BACON</b> 1-LB. LAYER                  | <b>39</b> | c     |
| LEAN — TENDER<br>GROUND HOURLY            |           |       |
| <b>GROUND BEEF</b> 3 lbs                  | <b>89</b> | c     |

## SWIFT'NING



3-LB.  
CAN

**69**

JACK 'N BEAN STALK  
**PURPLE PLUMS**  
IN HEAVY SYRUP

LARGE 2 1/2 CANS **19**<sup>c</sup>

RIVIERA  
**CHILI CON CARNE**  
WITH BEANS

LARGE 1 1/2-LB. CAN **29**<sup>c</sup>

CRENSHAW FARMS FROZEN FOODS

MINUTE MAID OR SNOW CROP

## LEMONADE

**10** 6-OZ. CANS **\$1<sup>00</sup>**

BIG TREAT  
IMITATION  
**ICE MILK**

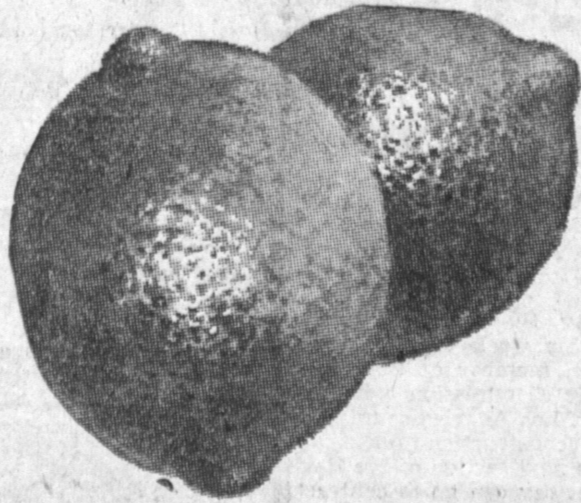
2 1/2 GAL. PKG. **65**<sup>c</sup>

RATH'S  
**BEEF STEAK**  
3 IN A PACKAGE

**3** Pkgs. **\$1**

## FARM-FRESH PRODUCE

### LEMONS



**5** lb

JUICY  
THIN-SKIN

### RED ROSE



NEW CROP — NO. 1  
**POTATOES**  
**10** lbs **29**<sup>c</sup>

50 POUND SACK **99**<sup>c</sup>

### STRINGLESS

### GREEN BEANS

**10** lb



### SWEET FLAVORED NECTARINES

**3** LBS. **25**<sup>c</sup>

### PILLSBURY'S BEST Pancake Mix

1-lb. PACKAGE **19**<sup>c</sup>  
2-lb. PACKAGE **29**<sup>c</sup>  
3-lb. PACKAGE **39**<sup>c</sup>

### BIG TOP

### Peanut Butter

LARGE 9 1/2-OZ. GOBLET **39**<sup>c</sup>

M-D — 4 Rolls In Package

### TOILET TISSUE

**29**

### LADIES' CHOICE

### Strawberry PRESERVES

4-LB. JAR REG. \$1.29 **89**<sup>c</sup>

### OUR BEST KOSHER & DILL

### PICKLES

1/2-GALLON JAR **39**<sup>c</sup>

SPECIALS FOR JULY 25, 26, 27, 28

# CRENSHAW FARMS

CRENSHAW at 166th

NORTH TORRANCE

OPEN EVERY NIGHT 'TIL 10 P.M.

## EC Expects Record Breaking Enrollment

Appointments for fall enrollment at El Camino College began last week as the college prepared for an annual record-breaking registration. Each year in the decade of the college's existence, registration figures have reached a now all-time high.



EDWIN HAMILTON  
... 20 years at Douglas

### Hamilton 20 Years At Douglas

Edwin W. Hamilton, 1665 West 182nd st., chief tool designer at the Torrance location, El Segundo division of the Douglas Aircraft Co., was honored on his 20th anniversary with Douglas when he was presented a diamond studded anniversary pin by T. E. Springer, vice president-general manager of the El Segundo division.

Hamilton, 44, joined Douglas in 1936 as an aircraft assembler at the El Segundo division. He later transferred to the Santa Monica division and in 1940 returned to the El Segundo division as a senior leadman in the master layout department.

From 1941 to 1952 he held increasingly important positions in tooling, starting as an assistant supervisor, then foreman

and general foreman, to assistant superintendent of tooling.

When the Torrance location was activated he was appointed chief tool designer. In that capacity, he is responsible for all planning, tool design and tool fabrication.

Hamilton and his wife, the former Nellie Reed, have two sons, Robert 19, and Steven 15. He commutes weekly to the family home, an avocado ranch at Fallbrook, Calif.

Registration procedures for four different classifications of students vary, Leo M. Christian, assistant director of student personnel, cautioned prospective students today.

Appointments for full-time students returning to the college or enrolling for the first time are being made at present.

Part-time students enrolled last spring will register on August 7 and 8, those whose surnames begin with letters M-Z registering on August 7 and those from A-L enrolling on the following day.

New students who wish to enroll for less than 10 units will register by permit beginning on August 21. Permits for this group of students will be available on July 29 and after. Counseling appointments are not essential for new part-time students.

Returning students who qualified for priority registration by meeting spring counseling appointments will be notified of their enrollment appointments by mail.

"In every case," Mr. Christian cautioned, "it is advisable for students to register at the earliest possible time to get desired classes."

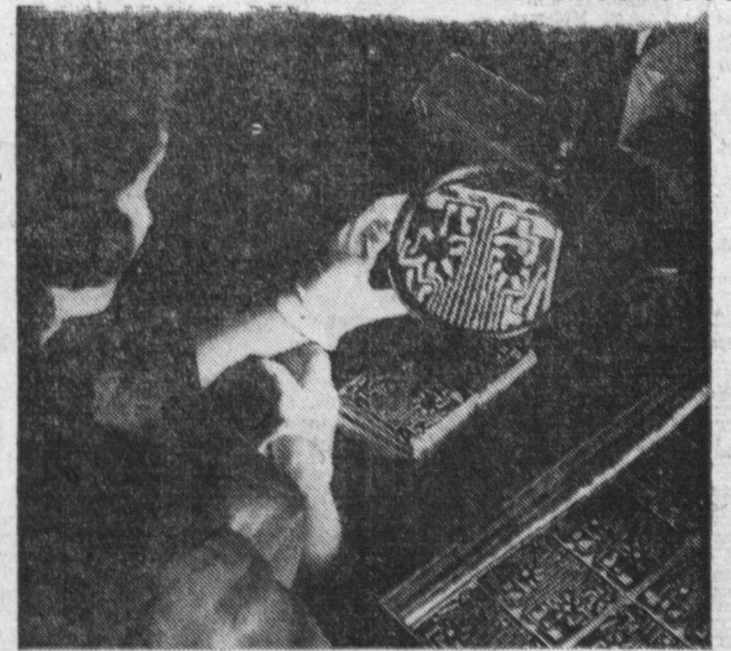
They find Torrance Press Classified Ads, FA. 8-2345.

THEY SELL! They rent! They find Torrance Press Classified Ads, FA. 8-2345.

## WHAT'S DOING



R. S. Pyle, your Telephone Manager in Torrance



Here's a new kind of "calling card." For telephone calling, that is. These odd looking cards are made by a process called "printed wiring." In certain kinds of telephone equipment they can form electrical pathways, replacing an intricate maze of wires. I expect you've heard about Automatic Answering Sets—phones that answer your calls when nobody's in. Well, they've got printed wiring in them. The cards eliminate a tremendous amount of delicate soldering and connecting, yet help us bring you better service.



Fire's a big hazard this time of year. So it's a good time for us all to get behind Smokey Bear's Fire Prevention Campaign. They say fire burned about 9 million acres of forest land last year. We can help by being extra careful to put out matches, cigarettes and campfires. I'm happy to pass along Smokey Bear's slogan right here: "Only You Can Prevent Forest Fires." Good point for all of us to remember.

### SUMMER SIESTA

This is the time of year when many a family backs the car out of the garage and heads for the mountains or ocean for a couple of weeks or so.

Leaving the toll and stress of the 50-week world behind for a while—which seems forever when you're leaving and no time at all when you get back—you light out blissfully for the open road.

Although our service goes on 24 hours per day, 52 weeks per year, we at Pacific Telephone take our vacations regularly, and just like you, here are some of the things we might forget without a reminder:

1. Get that old car—or new one for that matter—checked before you wheel out onto the highway.

2. Drive carefully—even if it means you'll have to come back to the old grind again.

3. Telephone ahead to confirm reservations. Also, if you don't mind our saying so, it's nice for hardworking folks back at home to hear from you once in a while—via telephone, naturally.

Bon voyage.

PACIFIC TELEPHONE & TELEGRAPH