

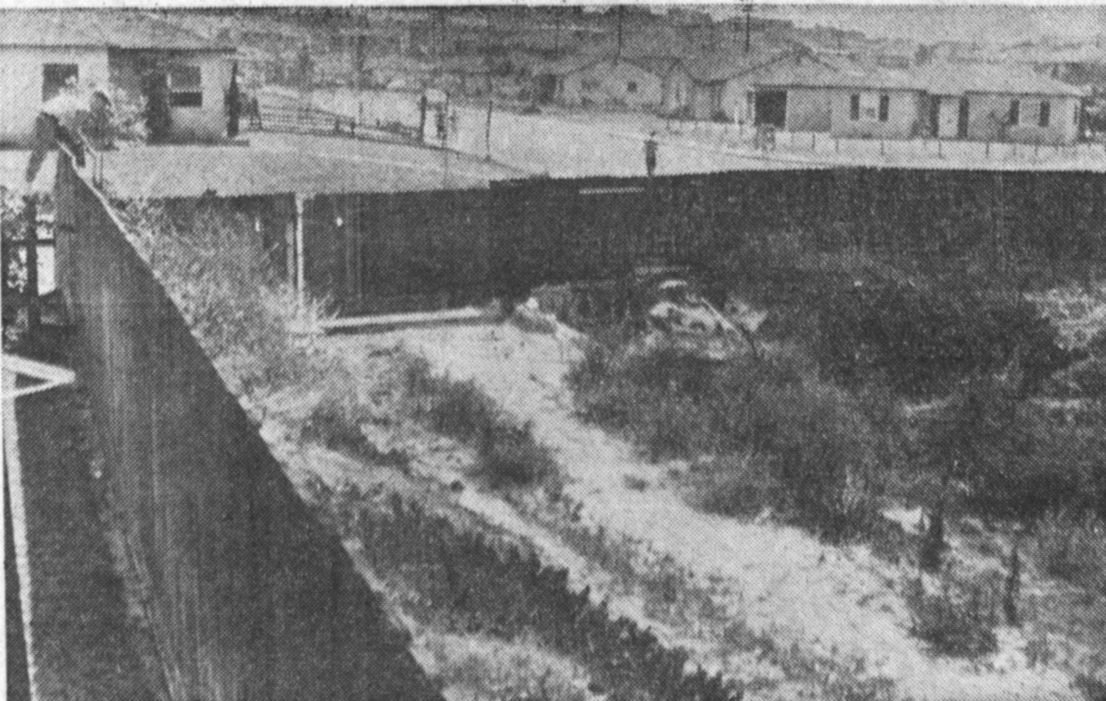
GAS CO. ASKS RATE INCREASE

Southern California Gas co. application before Commissioner C. Lyn Fox and Examiner Manley Edwards. The last general rate increase granted the company was in December, 1954.

The changes proposed under the revised application would mean a monthly increase ranging from 66 cents to 71 cents in the average bills of the company's 1,600,000 general service customers, boosting gas rates about 11 1/2% for this class of customers.

DON'T JUST HOPE what's lost will be found—Contact the finder via a TORRANCE PRESS Classified Ad: FA. 8-2345.

3 EASY WAYS to place TORRANCE PRESS Classified Ads: Dial FA. 8-2345, mail them, or come in.



SUMP HOLE MENACE CROPS UP AGAIN

This city-owned sump hole at Susanna off Palos Verdes blvd. presents a constant menace to the 250 children living with a four-block radius. The fence serves as a ladder rather than a barrier. City officials took renewed notice of the situation Tuesday and indicated that recommendations have been made to correct the situation.—Press Photo.



NEW PITCH AND PUTT COURSE

Opening of the new pitch and putt course at Sea-Aire park will be announced as soon as equipment is delivered, according to recreation officials. The Par 3 (nine hole) course is located at Lupine and Reynolds road.—Press Photo.

DON'T JUST HOPE what's lost will be found—Contact the finder via a TORRANCE PRESS Classified Ad: FA. 8-2345.

Rev. Penner 'Improving'

Rev. John J. Penner, Harbor General hospital chaplain, was said to be "steadily improving" after being stricken a week ago Tuesday.

The 61-year-old clergyman collapsed while visiting patients. Collapse was attributed to nervous exhaustion.

Rev. Penner was transferred to St. Francis hospital in Lynwood. He has been hospital chaplain here for five years.

WHAT YOU WANT when you want it, via TORRANCE PRESS Classified Ads: FA. 8-2345.

WHEN ALL ELSE FAILS a Classified Ad can locate the finder of what's lost. FA. 8-2345.

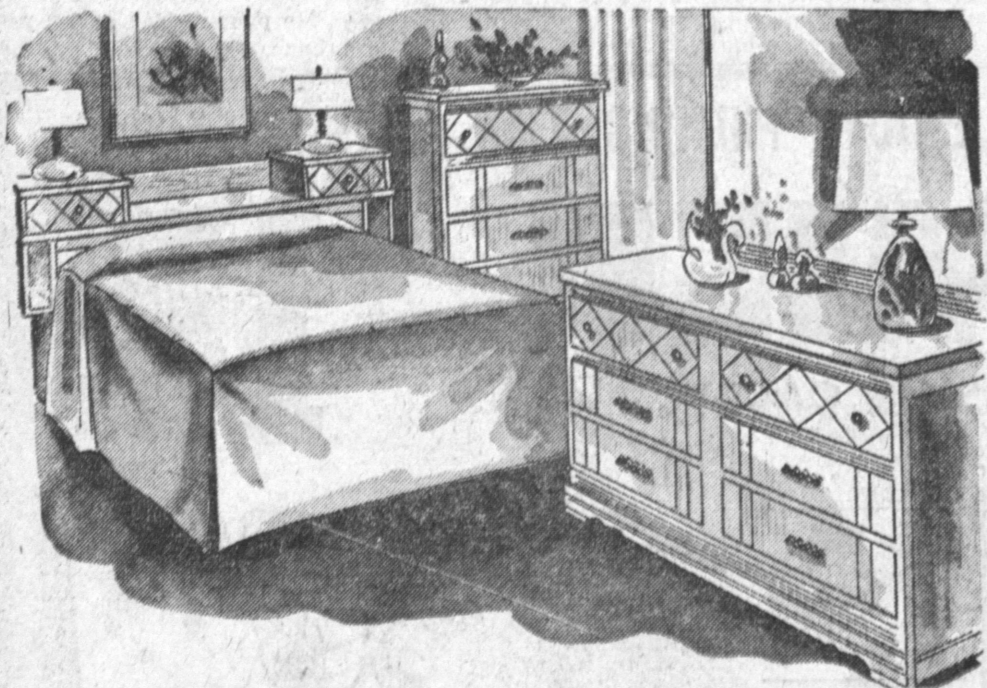
Donates Books

Mrs. Naomi Nansel, a member of the Walteria Business and Professional Women's club, recently donated 39 children's books to the library of Walteria. Mollie Dowd accepted the books on behalf of the library.

ENROLLMENT

Full-time students wishing to enroll for the first time at El Camino college may make appointments for enrollment in the counseling office of the college beginning July 22.

SAVE ON THIS 9-PC. BEDROOM GROUP



GROUP INCLUDES

- BOOKCASE HEADBOARD
- STURDY FRAME
- 6-DRAWER DOUBLE DRESSER
- BEVELED MIRROR
- INNERSPRING MATTRESS
- BOX SPRING • BEDSPREAD
- 2 BOUDOIR LAMPS

REGULAR 241.20 VALUE
SEA MIST FINISH
Center Guided Drawers
Dovetail Construction
SPECIAL!

\$199⁹⁵

STAR FURNITURE CO.
2013 Torrance Blvd.
PHONE FAirfax 8-1247 OPEN FRIDAY UNTIL NINE

We Carry Our Own Contracts—You Deal Only With the Owners
Frank Higgins — Steve Schmidt — Ken Belles

HERMAN MILLER OF TORRANCE

SALE OF SALES
20% DISCOUNT
LIMITED TIME ONLY
100 NEW PLYMOUTHs READY TO ROLL!

(on approved credit)
Pay as Little as \$47 a Month
NO MONEY DOWN!

HERMAN MILLER PLYMOUTH CO.
1600 CABRILLO AVE.
FAirfax 8-6161 TORRANCE FAirfax 8-6161

WHEN IT'S TIME TO MOVE

LOCAL OR LONG DISTANCE — It's Time to See ...

TORRANCE MAYFLOWER

"THE BEST OF CARE...LESS TIME...NO WEAR"
TORRANCE VAN & STORAGE CO.
(Exclusive Local Agent for Aero Mayflower Transit Co.)
21809 S. WESTERN AVE. — Call FA 8-7021

"Home of the individual vault storage"

Happy Birthday!



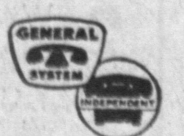
It costs so little nowadays to telephone personal greetings to friends and family members—even when they're many miles away.

Why not keep a list of the names you wish to remember—along with birthday and anniversary dates and telephone numbers?

How to Get Out of Town Numbers

Call the Long Distance operator. Tell her the name, address and home city of the person you want and ask her to get the telephone number for you. Then you can send greetings and make other calls without delay.

If you'd like a Personal Telephone Directory to list names, numbers and special "dates" of folks you call often, phone or write our Business Office and we'll send you one with our compliments.



A MEMBER OF ONE OF AMERICA'S GREAT COMMUNICATIONS SYSTEMS

General Telephone Company of California