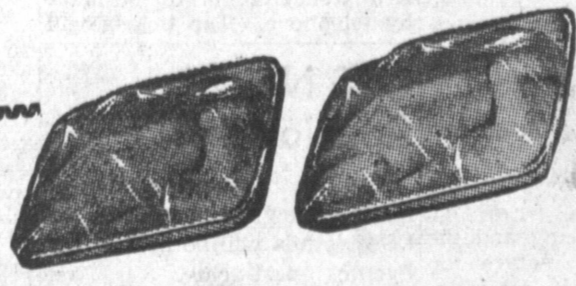


**GRADE "A"**

The Very Finest  
Waste-Free, Oven-Ready  
Tender, Juicy Grain-Fed

**HEN TURKEYS**

**35** <sup>c</sup> <sub>lb.</sub>



**YOUNG GRADE A**  
THE VERY FINEST... TENDER, PLUMP  
WASTE-FREE, OVEN-READY

**CUT-UP STEWING CHICKENS**

**29** <sup>c</sup> <sub>lb.</sub>

U.S.D.A. GRADED CHOICE... TENDER, JUICY GRAIN-FED

FRESH SLICED GENUINE

**BABY BEEF LIVER**

**39** <sup>c</sup> <sub>lb.</sub>

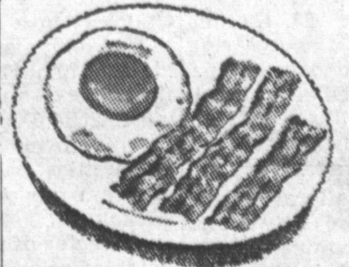
WELL AGED AND WELL TRIMMED  
**BLADE CUT CHUCK BEEF ROAST**

**39** <sup>c</sup> <sub>lb.</sub>

U.S.D.A. CHOICE TENDER, JUICY WELL AGED AND WELL TRIMMED

**SWISS STEAK**

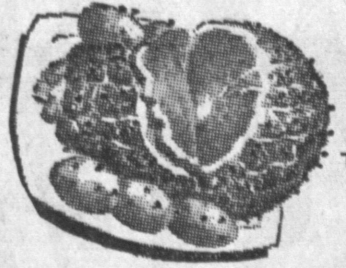
**59** <sup>c</sup> <sub>lb.</sub>



LEAN EASTERN CORN-FED CELLO WRAPPED PACKAGES

**SLICED BACON**

**49** <sup>c</sup> <sub>lb.</sub>



FARMER JOHN Lean Eastern Tender Corn-Fed Sweet Sugar Cured

**SMOKED HAM**

LARGE MEATY PARTS TO BAKE

**45** <sup>c</sup> <sub>lb.</sub>

<b>WISK</b> LIQUID DETERGENT Pint 39¢ Quart 73¢	<b>LUX FLAKES</b> Large Pkg. 34¢ Giant Pkg. 82¢	<b>LIFEBUOY</b> BATH SOAP 3 Regular Cakes 31¢	<b>LIFEBUOY</b> BATH SOAP 2 Bath Size Cakes 31¢	<b>BREEZE</b> DETERGENT Large Pkg. 34¢ Giant Pkg. 82¢	<b>SPRY</b> PURE SHORTENING Pound Can 38¢ 3-lb. Can \$1.03	<b>FLORIENT</b> AIR DEODORANT Small 79¢ Large \$1.49	<b>COLGATE'S</b> BEAUTY BAR 2 Regular Cakes 27¢
---	--	---	---	---	--	--	---

**1/2 Price Sale!**  
New KING SIZE package (10 FULL OUNCES)

**PILLSBURY PIE CRUST**  
2 10-OZ. PACKAGES **29** <sup>c</sup>

**GRAPE JELLY**  
TOP FLAVOR PURE  
2 12-OZ. JARS **25** <sup>c</sup>

**NORTHERN COLORED TOWELS**  
150-CT. PKGS.  
2 for **37** <sup>c</sup>

**PERFECTION PURE BLACK PEPPER**  
4-OZ. CAN **19** <sup>c</sup>

**CARNATION EVAPORATED CANNED MILK**  
2 TALL CANS **25** <sup>c</sup>

**CLARK'S LIQUID STARCH**  
FULL QUART BOTTLE **19** <sup>c</sup>

**"JIFFY" ASSORTED CAKE MIXES**  
WHITE, YELLOW, CHOCOLATE, SPICE, 9-OZ. PACKAGE **15** <sup>c</sup>

**New! in dreamy colors Lullaby Soft MD**

**4 ROLLS in cello wrap** **35** <sup>c</sup>

**KERMIN QUICK-FROZEN CHICKEN TACOS**  
7-OZ. PKG. **4** PKGS. for **\$1**

**PACIFIC HONEY TREAT GRAHAMS**  
POUND BOX **31** <sup>c</sup>

**Golden Creme, 1st Quality BUTTER** 1/2-lb. Pkg. **35** <sup>c</sup>

**Challenge, 1st Quality BUTTER** 1/2-lb. Pkg. **35** <sup>c</sup>

**any Dog will tell you... STURDY Dog Food is the best dog-gone dog food your dog can eat!**

**STURDY DOG FOOD**  
27-OZ. PACKAGE **29** <sup>c</sup>

**4 LB. Pkgs. 59** <sup>c</sup>

**Liquor Dept.**

**GILBEY'S FINE DISTILLED**

**VODKA** FULL FIFTH **\$4.24**

**GIN** FULL FIFTH **\$4.33**

**BOTTLED IN BOND "BOSSOM SPRINGS" 100 PROOF KENTUCKY STRAIGHT BOURBON WHISKEY** Full Fifth **\$3.89**

TRY A SUMMER COOLER WITH FINE **CHAMPAGNE** FULL FIFTH **\$2.09**

**CROSSE AND BLACKWELL EXTRA DRY PREPARED COCKTAILS** Full Fifth **\$2.69** MARTINI or MANHATTAN

**MARSHMALLOWS** SUNSHINE Lb. Pkg. **35** <sup>c</sup>

**PINEAPPLE JUICE** LIBBY'S 46-oz. Can. **28** <sup>c</sup>

**TOMATO JUICE** LIBBY'S 46-oz. Can. **26** <sup>c</sup>

**LIBBY'S FRUIT COCKTAIL** 2 8-oz. cans **29** <sup>c</sup>

**LIBBY'S CUT BEETS** 2 cans **27** <sup>c</sup>

**SWEET PICKLE RELISH** LIBBY'S 12-oz. Jar. **27** <sup>c</sup>

**ASSORTED DOG FOOD** RED HEART 2 large cans **31** <sup>c</sup>

**IXL LASAGNE** 40-oz. Can. **49** <sup>c</sup>

**SUNSHINE, FRESH BAKED KRISPY CRACKERS** POUND BOX **31** <sup>c</sup>

**NABISCO RITZ** Fresh Baked Crackers POUND BOX **39** <sup>c</sup>

**PUNTE** AT ELLIOT AVE. IN LA PUENTE

**WESTERN** AT IMPERIAL AVE. IN LOS ANGELES

**CRENSHAW** AT COMPTON BLVD. IN GARDENA

**VERMONT** AT 140th STREET IN GARDENA

**Clark Markets Farm-Fresh Produce**

**SWEET, JUICY... LARGE, RIPE FANCY ELBERTA FREESTONE PEACHES**

**3 lbs. 29** <sup>c</sup>

**U. S. NO. 1 SWEET SPANISH ONIONS** **5** <sup>c</sup> <sub>lb.</sub>

**LONG GREEN GARDEN FRESH, THE VERY FINEST CUCUMBERS** **3 for 10** <sup>c</sup>

**LARGE SIZE, THIN SKINNED, CHOCK FULL OF JUICE SELECT VALENCIA ORANGES** **7** <sup>c</sup> <sub>lb.</sub>

**SANITARY NAPKINS KOTEX** PACKAGE OF 12 **43** <sup>c</sup>

**FACIAL TISSUE KLEENEX** 400-CT. PACKAGE **27** <sup>c</sup>

**KLEENEX PAPER NAPKINS** 2 80-CT. PACKAGES **49** <sup>c</sup>

**COLGATE'S BEAUTY BAR** 2 BATH CAKES **37** <sup>c</sup>



**OLIVE** AT WILMINGTON IN COMPTON

**HWY. 101** AT HAWTHORNE BLVD IN TORRANCE

**CLARK** AT ROSE STREET IN BELLFLOWER

**SEPULVEDA** AT MARINE AVE. IN MANHATTAN BCH.

OPEN 7 DAYS A WEEK FROM 9 to 10

"FAMOUS FOR LOWER FOOD PRICES!"

The Right To Limit Quantities is Reserved