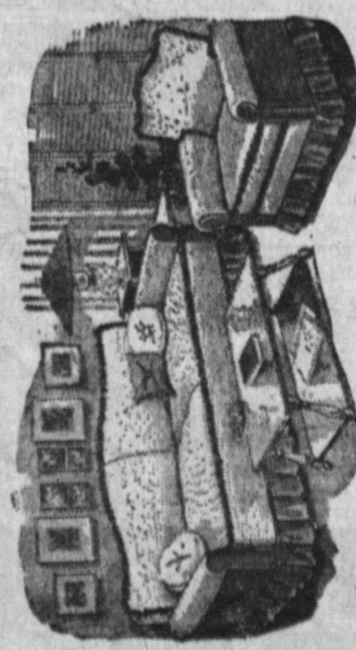
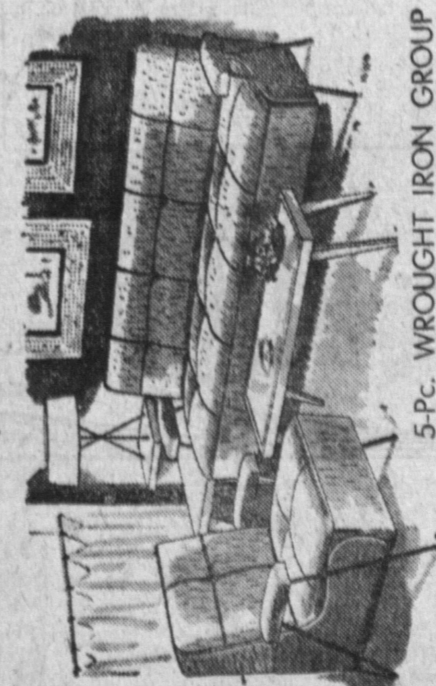


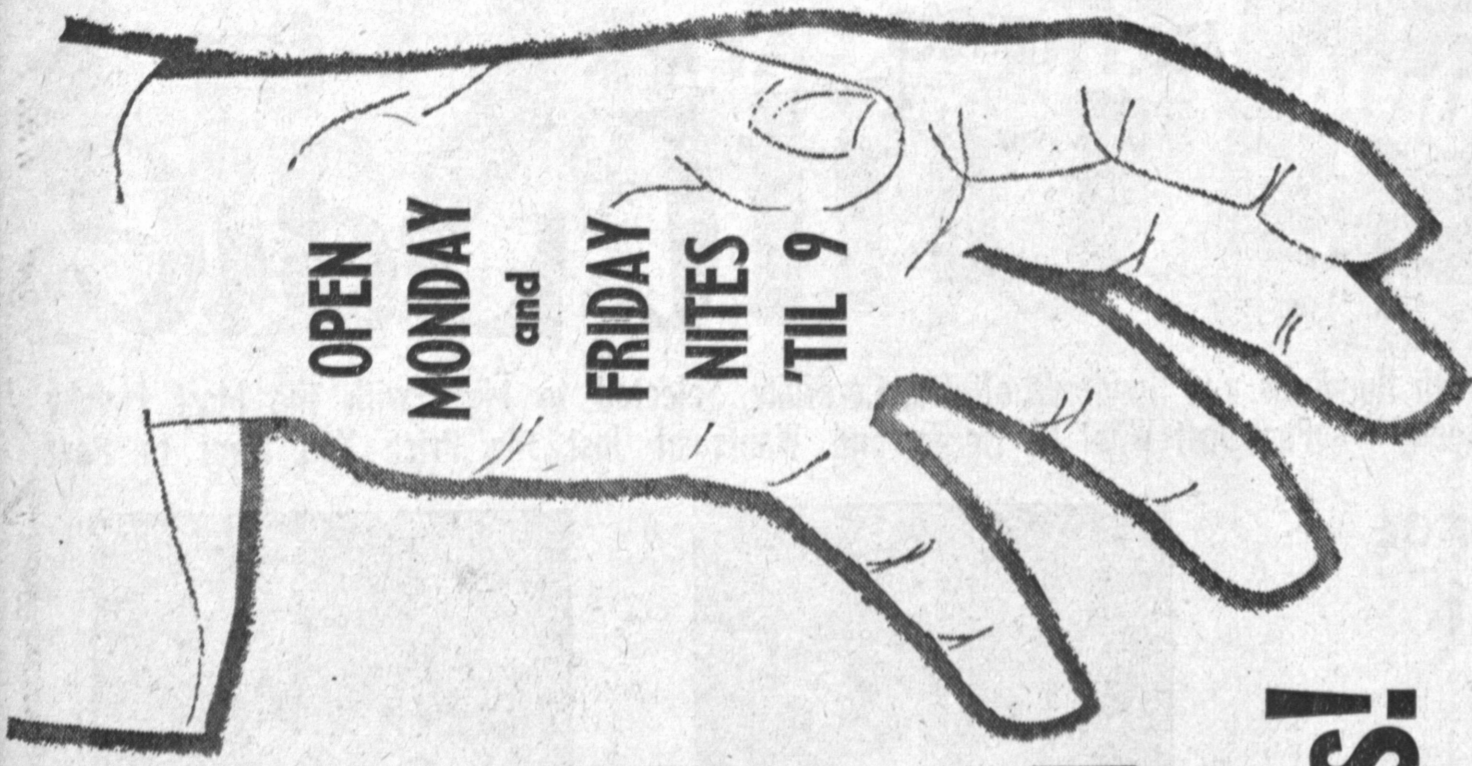
OPEN MONDAY and FRIDAY NITES 'TIL 9



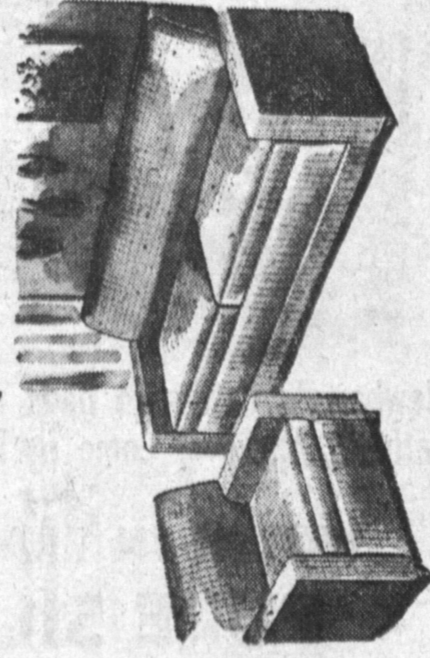
LAWSON DIVAN NOW ONLY \$99.50 with trade. Attractive tweed fabric with ruffles. Makes into a full size bed. Full coil spring construction with hardwood frame. Divan makes into bed. Sleeps two. MATCHING CHAIR \$49.50



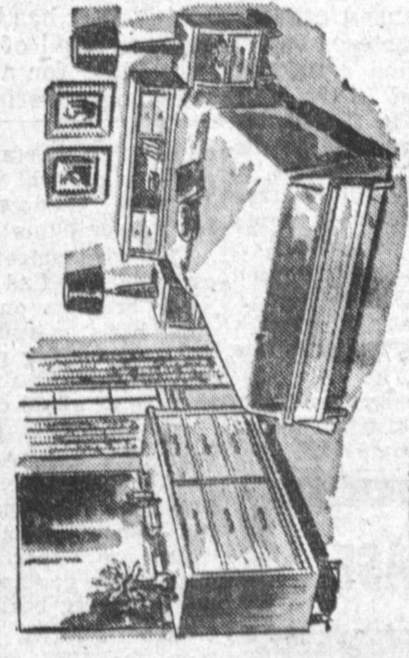
INCLUDES: DIVAN and CHAIR \$149.95 with trade. 5-PC. WROUGHT IRON GROUP. 2 End Tables, 1 Coffee Table, 2 Seats. COMPLETE



OPEN MONDAY and FRIDAY NITES 'TIL 9



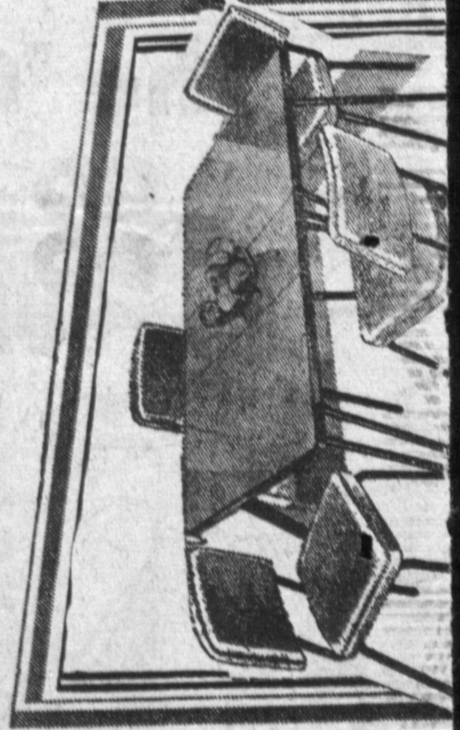
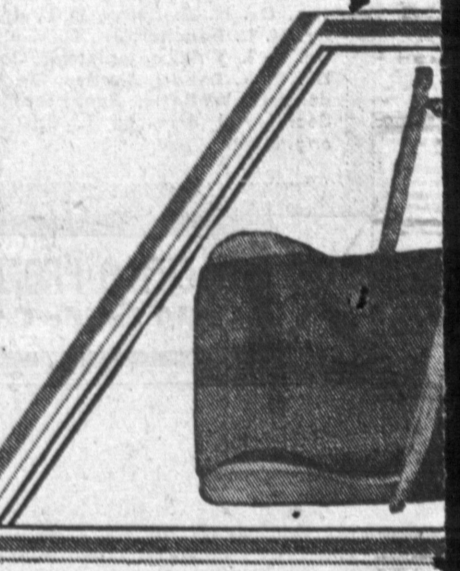
2-PC. MODERN HOLLYWOOD SOFA SET \$199.50 with trade. Beautiful covers to select from - Contemporary style. Foam rubber cushions. SOFA & CHAIR.



5-PC. MODERN HOLLYWOOD Bedroom Group \$139.50 with trade. Consists of large 6-drawer dresser, mirror, 2 stands, bookcase headboard.



Famous Make Full or Twin Size BOX SPRINGS AND MATCHING MATTRESS SET BOTH FOR ONLY \$39.95 With Trade



SALEM MAPLE CAPTAIN'S CHAIR Now Only \$1.89 Milk

# Replace your old Furniture & Appliances!

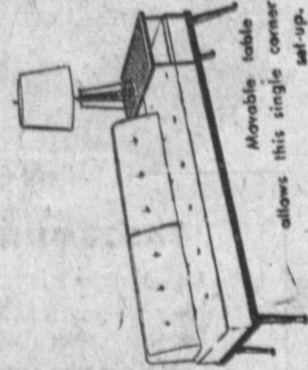
## WE'LL TRADE ANYTHING

Your Old Living Room, Bedroom, Dining Room, Dinette Set, Radio, Refrigerator, Stove, Chairs, etc. You name it! Just ask us. We'll take almost ANYTHING!



Count the unusual features in the DUPLEX COUCH by Inco

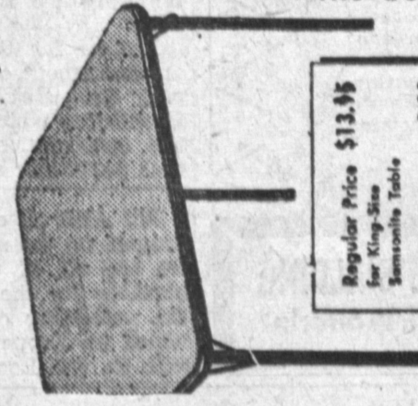
Removable bolsters, arms and table make it a versatile, small-home space-saver.



The Perfect All-purpose Couch—at a Budget Price... The DUPLEX has ALL the right answers: Reversible, loose interspring mattress turns for extra wear—bedding tucks under for sleeping. Metal table can be bolsters for seating convenience. Two big wedge-shaped footrests. Tapered hard-wood legs with self-leveling glides.

\$69.95 with trade

CHEST-O-BED WROUGHT IRON WITH MATTRESS - 2-DRAWER CHEST PLUS DESK. \$59.95 with trade



Regular Price \$13.95 for King-Size Samsonite Table. We allow you \$3.00 for old card table. You pay only \$10.95

Get a \$3 TRADE-IN ALLOWANCE on your old card table when you buy a new Samsonite King-size card table!

You don't even have to bring your old table in! You just deduct \$3.00 from your \$13.95 when you buy your Samsonite King-Size, the world's smartest, strongest folding card table. Big, top-coat clean with a damp cloth. Strong tubular steel legs and frame. In 7 decorator colors. Limited offer.



SALEM MAPLE CAPTAIN'S CHAIR Now Only \$1.89 Milk