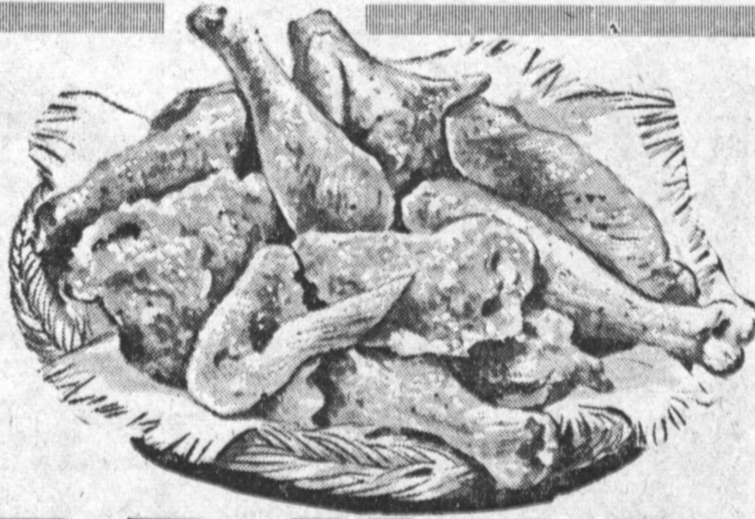


U. S. D. A. GRADED CHOICE
EXTRA TENDER AND EXTRA JUICY
WELL AGED AND WELL TRIMMED
FULL CENTER CUTS

ROUND STEAK

65 ^c lb.

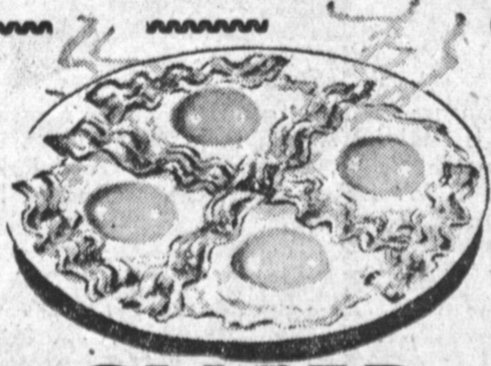


GRADE A... CUT-UP

THE VERY
FINEST
YOUNG
TENDER
PLUMP
WASTE-FREE

39

FRYERS



SLICED BACON

LEAN EASTERN CORN-FED Cello Wrapped Reg. 59c lb. **49** ^c lb.



THE VERY FINEST

TURKEYS

GRADE "A" HENS

TENDER PLUMP WASTE-FREE

39 ^c lb.

U. S. D. A. GRADED CHOICE STEER BEEF, FRESHLY GROUND

GROUND BEEF

Sold In 3 Lbs. Packages or Over **35** ^c lb.

U. S. INSPECTED, YOUNG, TENDER, GENUINE SLICED

BABY BEEF LIVER

39 ^c lb.

CARNATION **CANNED MILK**
2 Tall Cans **25** ^c



WHITE KING **SOAP**
Large Giant **34c 69c**

SCHILLING'S PURE **BLACK PEPPER**
4-ounce Can **29** ^c



WHITE KING **WATER SOFTENER**
Large Giant **25c 49c**

IXL CANNED CHICKEN **RAVIOLI**
Large 40-oz. Can **49** ^c



WHITE KING **LIQUID DETERGENT**
12-oz. 22-oz. **38c 67c**

CLEANS ALUMINUM FAST **BRILLO SOAP PADS**
Package of 12 Red Box **23** ^c



WHITE KING **CLEANSER**
New Decorator Cans **2 for 31c**

CLARK JEWELRY CENTER
KERMAN-MORILLO JEWELERS

SUGGESTIONS FOR FATHER'S DAY
SUNDAY, JUNE 16

- Zippo Lighter \$3.50
- Anson Tie Bar or Cuff Links \$1.50
- Watch Bands from \$1.00
- Buxton Wallets from \$3.95
- Keychains from \$1.00
- Timex Watches from \$6.95

RE-MINGTON, SUNBEAM and SCHICK SHAVERS

FREE ESTIMATES
WATCH CLEANING \$5.95
RE-SIZE RINGS From \$2.95

Clark Markets Farm-Fresh Produce

LEMONS
LARGE, JUICY
THE VERY FINEST THIN SKINNED **9** ^c lb.

LONG GREEN, CRISP FARM FRESH **CUCUMBERS**
EACH **4** ^c

JUMBO ROASTED PEANUTS
12-oz. CELLO PKG. **29** ^c ea.

U. S. NO. 1 LARGE
THE VERY FINEST
SELECT WHITE ROSE
POTATOES
10 lbs. **25** ^c

KRAFT'S **ITALIAN DRESSING** FULL PINT JAR **39** ^c

- MINUTE MAID FROZEN ORANGE JUICE 2 - 6-oz. cans 35c
- MRS. WEBER'S SPAGHETTINI, 12-oz. pkg. 19c
- SMUCKER'S ELDERBERRY JELLY, 10-oz. jar 27c
- RUS-ETTES FROZEN HASH BROWN POTATOES, 12-oz. 15c
- REALEMON LEMON JUICE, 12-oz. bottle 23c
- ROMAN MEAL CEREAL 14-oz. 22c 28-oz. 38c
- V-B APPLE SAUCE, No. 303 can 23c
- LIBBY'S SLICED CLING PEACHES, 303 can 22c
- MAZOLA, SALAD AND COOKING OIL, qt. 65c
- M & M CHOCOLATE CANDY, 7-oz. pkg. 29c
- SUNSHINE MARSHMALLOWS, pound pkg. 35c
- LIBBY'S TOMATO JUICE, 46-oz. can 26c
- LIBBY'S SLICED RED BEETS, 303 can 17c
- NIBBLET'S WHOLE KERNEL CORN, 12-oz. can 17c
- PLANTER'S COCKTAIL PEANUTS, 8-oz. can 39c

HORMEL'S - HEAT 'N SERVE **CHILI and BEANS** 24-oz. CAN **39** ^c

- MACOMBER'S APPLE CIDER, 24-oz. bottle 25c
- JAN-U-WINE BEAN SPROUTS, 303 can 15c
- OCEAN SPRAY CRANBERRY SAUCE, lb. can 23c
- RE-UMBERTO OLIVE OIL, 1/2 pint 45c
- VET DOG FOOD, large cans 3 for 25c
- KERN'S ORANGE MARMALADE, 12-oz. jar 27c
- 20 MULE TEAM BORAX POWDER, lb. pkg. 21c
- BLU-WHITE LAUNDRY FLAKES, 4-oz. pkg. 10c
- BAB-O HOUSEHOLD CLEANSER, gt. cans 2 for 37c
- GOODWIN'S AMMONIA pt. 14c Qt. 25c
- LINITO LAUNDRY STARCH, 12-oz. pkg. 15c
- QUICK ELASTIC LAUNDRY STARCH, 12-oz. pkg. 16c
- SWEETHEART TOILET SOAP, reg. cakes 3 for 27c
- SWEETHEART TOILET SOAP, bath cakes 2 for 27c

- RAIN DROPS WATER SOFTENER, 24-oz. pkg. 27c
- DOWNYFLAKE FROZEN WAFFLES, pkg. of six 2 for 35c
- DOLE'S FROZEN PINEAPPLE JUICE, 6-oz. can 19c
- HOLLOWAY HOUSE FROZEN STUFFED PEPPERS, 14-oz. 61c
- CAL FAME FROZEN GRAPEFRUIT, 13 1/2-oz. pkg. 21c
- B & M OVEN BAKED BEANS, 28-oz. can 34c
- LUCKY LEAF CHERRY PIE FILLING, No. 2 can 39c
- KAISER ALUMINUM BROILER FOIL, 25 ft. 43c
- SOFT WEVE BATHROOM TISSUE 2 rolls 27c
- SCOT PAPER TOWELS, 50 ct. roll 2 for 39c
- SCOTTIES FACIAL TISSUE, 400 ct. pkg. 29c
- SCOTKINS PAPER NAPKINS, 50 ct. pkg. 2 for 37c
- SCOT TOILET TISSUE, reg. roll 13c
- CHEF BOY-AR-DEE RAVIOLI, 15 1/2-oz. can 28c
- NEWS DETERGENT 1ge. pkg. 25c giant 47c
- PARD DOG FOOD, large can 15c
- NINE LIVES RED TUNA PET FOOD 2 No. 1/2 cans 25c
- PUSS 'N BOOTS CAT FOOD, 8-oz. cans 3 for 25c
- CROWN PRINCE HORSE MEAT 2 lge. cans 39c

Clark Markets DELICATESSEN SPECIALS

RICH CREAMY MILD **AMERICAN CHEDDAR CHEESE** **49** ^c lb.

FINEST QUALITY, U. S. GOVT. INSPECTED **SMALL STICK BOLOGNA** **39** ^c lb.

CLARK'S FINEST WISCONSIN SLICED CHEESE

- AMERICAN
- PIMIENTO
- SWISS

8-oz. PKGS. **29** ^c ea.

PUENTE AT ELLIOT AVE. IN LA PUENTE
CRENSHAW AT COMPTON BLVD. IN GARDENA
WESTERN AT IMPERIAL AVE. IN LOS ANGELES
VERMONT AT 140th STREET IN GARDENA

Clark Markets

OLIVE AT WILMINGTON IN COMPTON
CLARK AT ROSE STREET IN BELLFLOWER
HWY. 101 AT HAWTHORNE BLVD IN TORRANCE
SEPULVEDA AT MARINE AVE. IN MANHATTAN BCH.

PREAM GOES AS FAR AS A PINT OF COFFEE CREAM! **31** ^c

CHALLENGE 1st QUALITY **BUTTER** 1/2-lb. Package **35** ^c

OPEN 7 DAYS A WEEK FROM 9 to 10

"FAMOUS FOR LOWER FOOD PRICES!"

The Right To Limit Quantities Is Reserved