



10,000 TURKEYS JUST ARRIVED!  
ARMOUR'S PEERLESS BRAND

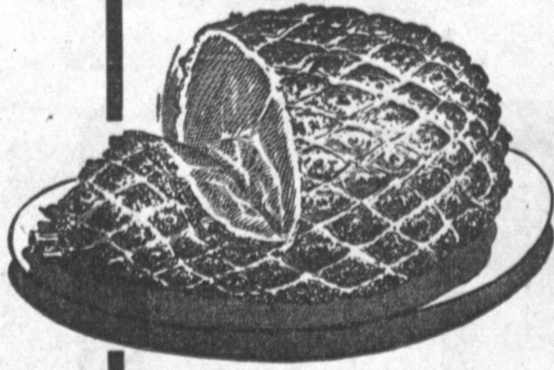
# BABY BELTSVILLE TURKEYS

EXCELLENT FOR B-B-Q AND ROASTING

THE VERY FINEST YOUNG TENDER WASTE-FREE!  
IDEAL FOR YOUR HOLIDAY DINNER

FOLKS... THESE TURKEYS WOULD BE A BARGAIN IF SOLD AT 55 CENTS A POUND! PERHAPS NEVER AGAIN AT THIS LOW, LOW PRICE! 4 TO 6 POUND AVERAGE.

# 39¢



## LUER'S VERY FINEST

LEAN EASTERN CORN-FED  
DELICIOUSLY SWEET AND EXTRA TENDER

# SMOKED HAM

WHOLE or SHANK PORTION

# 49¢



U.S.D.A. CHOICE AND CLARK'S "WONDERFUL" GRAIN-FED

## STEAK SALE!

"THE KIND YOU CAN CUT WITH A FORK!!"

U.S.D.A. CHOICE AND CLARK'S "WONDERFUL" GRAIN-FED, TENDER, JUICY, WELL TRIMMED STEER BEEF

**CLUB STEAK .. 89¢** lb.

U.S.D.A. CHOICE AND CLARK'S "WONDERFUL", EXTRA TENDER AND EXTRA JUICY STEER BEEF

**T-BONE STEAK 93¢** lb.

U.S.D.A. CHOICE AND CLARK'S "WONDERFUL", WELL AGED, WELL TRIMMED, MEATY STEER BEEF

**PORTERHOUSE 98¢** lb.

U.S.D.A. CHOICE AND CLARK'S "WONDERFUL", THE VERY FINEST, GRAIN-FED STEER BEEF

**BONELESS N.Y. CUT STEAKS \$1.19** Per Pound

WILSON'S CORN KING  
LEAN EASTERN CORN-FED  
(Reg. 59c Value)

**SLICED BACON**  
POUND CELLO PKGS.

# 49¢

MACLEAN'S  
QUICK FROZEN, READY-TO-FRY  
**BREADED FISH**  
LB. PKG. **39¢** LB. PKG. **45¢**  
PERCH SOLE

LIPTON, The "Brisk" Tea  
**BLACK TEA**  
1/4-Pound Package **43¢**

LIPTON, The "Brisk" Tea  
**TEA BAGS**  
16-count Package **23¢**

WESTON'S WONDERFUL  
CHOCOLATE FUDGE  
**COOKIES**  
12-oz. Package **35¢**

KITCHEN CHARM  
Extra Heavy Waxed  
**WAX PAPER**  
Large Roll **17¢**

NEW! PILLSBURY FAMILY  
**FLOUR**  
14-oz. Shaker Packages **37¢**

**PREAM**  
GOES AS FAR AS  
A PINT OF  
COFFEE  
CREAM! **31¢**

SUNSHINE COOKIES  
**HYDROX**  
12-oz. Cello Pkg. **39¢**

GOLDEN CREME  
1st QUALITY  
**BUTTER**  
1/2-lb. Package **35¢**

SANITARY NAPKINS  
**KOTEX**  
Package of 12 **43¢**

FACIAL TISSUE  
**KLEENEX**  
400-count Package **27¢**

ZEE FAMILY PAK  
**TISSUE**  
Regular Roll Packages **33¢**

ZEE  
**LUNCH BAGS**  
Package of 20 **11¢**



### DELICATESSEN SPECIALS



MORRELL PRIDE, READY-TO-EAT  
**CANNED HAM**

• BONELESS  
• SKINLESS  
• SHANKLESS  
**\$4.89** Each  
5-LB. CAN

LONGHORN  
**CHEESE**  
FINEST QUALITY WHOLE MILK **49¢** lb.

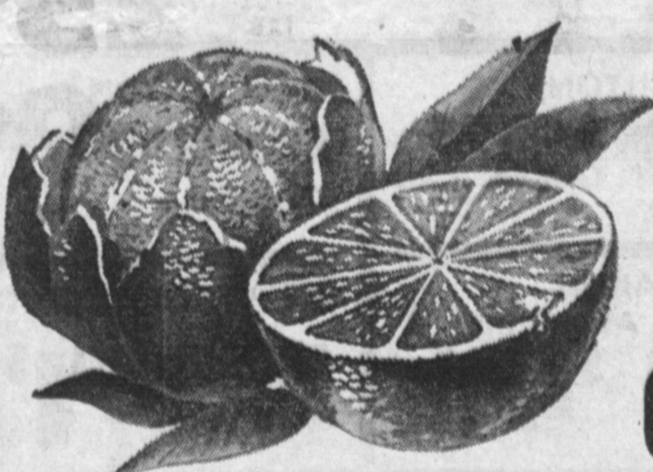
FRESH LIVER  
**SAUSAGE**  
FINEST QUALITY U. S. GOVT INSPECTED **39¢** lb.



LUER'S ALL-MEAT  
FINEST QUALITY  
**FRANKS**  
CELLO PACKAGE **49¢** lb.



### Farm-Fresh Produce



SWEET, RIPE  
VERY BEST  
JUICY... THE  
LARGE TABLE  
SIZE  
SELECT NAVEL

# ORANGES

**CABBAGE**  
SOLID GREEN  
FARM-FRESH  
FINE FOR SLAW **3¢** lb.

FARM FRESH, YOUNG TENDER  
**ITALIAN SQUASH**  
**2 Pounds 13¢**

FRESH, HOME GROWN... CRISP, LONG GREEN  
**CUCUMBERS** EACH **5¢**

- BEL-AIR PLAIN **CROUTONS** 3-oz. Package **29¢**
- NESTLE'S CHOCOLATE FLAVOR **QUICK** Pound Can **46¢**
- SUNSHINE **MARSHMALLOWS** Lb. Pkg. **33¢**
- CALO **CAT FOOD** Large Cans... 2 for **27¢**
- DUNBAR MEDIUM **SHRIMP** 5-oz. Can **53¢**
- GEBHARDT'S **TAMALES** 15 1/2-oz. Can **23¢**
- GOODWINS **AMMONIA** Quart Bottle **25¢**
- HEMET - SPICED **APRICOTS** No. 2 1/2 Can **33¢**
- KERN'S **GRAPE JELLY** 12-oz. Jar **25¢**
- LIMIT LAUNDRY **STARCH** 12-oz. Package **15¢**
- MACOMBER'S **APPLE CIDER** 24-oz. Bottle **25¢**
- GERBER'S STRAINED **BABY FOOD** 4 cans **43¢**
- STAR-KIST FROZEN **TUNA PIE** 8-oz. Package **25¢**
- SNOW'S **CLAM CHOWDER** 15-oz. **29¢**
- UNCLE BEN'S **RICE** 28-oz. Package **41¢**

**Quality LIQUORS**

**SEAGRAM'S GOLDEN GIN**  
90 PROOF  
FULL FIFTH **\$4.60**

**7-CROWN FINE BLENDED WHISKEY**  
FULL FIFTH **\$4.89**

**GOLDEN LAGER PREMIUM BEER**  
LIGHT MILD MELLOW **29¢** FULL QUART

**BURGUNDY** FINE DRY CALIFORNIA WINE **3 FULL FIFTHS 99¢**

**BLOSSOM SPRINGS BOTTLED IN BOND**  
100 PROOF KENTUCKY STRAIGHT BOURBON WHISKEY **\$3.99** Full Fifth



"FAMOUS FOR LOWER FOOD PRICES!"

<b>PUENTE</b> AT ELLIOT AVE. IN LA PUENTE	<b>WESTERN</b> AT IMPERIAL AVE. IN LOS ANGELES	<b>OLIVE</b> AT WILMINGTON IN COMPTON	<b>HWY. 101</b> AT HAWTHORNE BLVD IN TORRANCE
<b>CRENSHAW</b> AT COMPTON BLVD. IN GARDENA	<b>VERMONT</b> AT 140th STREET IN GARDENA	<b>CLARK</b> AT ROSE STREET IN BELLFLOWER	<b>SEPULVEDA</b> AT MARINE AVE. IN MANHATTAN BCL.

THE RIGHT TO LIMIT QUANTITIES IS RESERVED