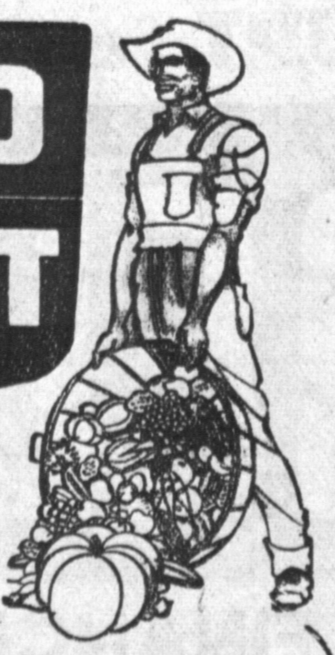
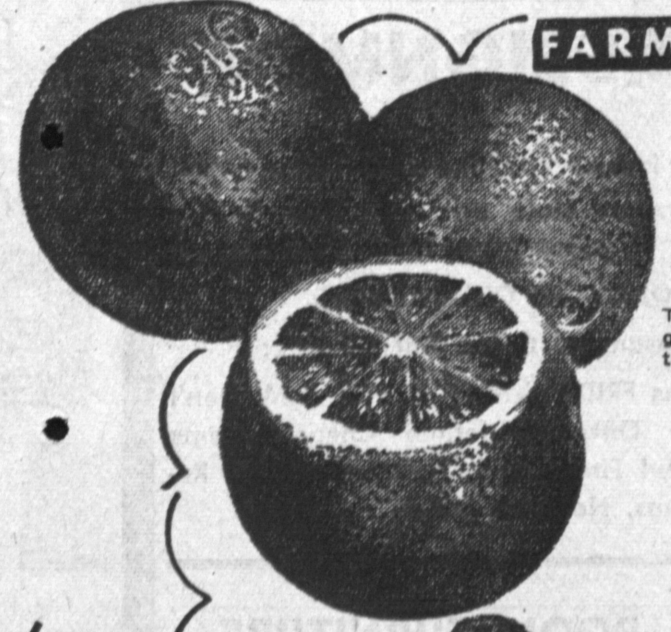


values!
NT Markets To Serve You
 HAWTHORNE 423
So. Hawthorne
 T 132nd STREET
 WHITTIER 11161
East Washington
 IN WHITTIER DOWNS MALL
May 2, 3, 4, 5



LIMIT RIGHTS RESERVED

FARM FRESH PRODUCE



LARGE NAVEL ORANGES

These big juicy, sweet navel oranges are a delight to eat. Full of golden goodness, they provide all the vitamin C that you need for a day. Serve them peeled and sliced for breakfast, lunch or dinner.

5 LBS 29¢



GOLDEN RIPE BANANAS

What more can you say about bananas than that they are: luscious, nutritious, golden ripe, from tropical Central America, perfect as a breakfast fruit with cream, have peels that are great to slip on; and this is a very good buy.

12 lb

EXTRA FINCY, CRIMSON RED

RHUBARB 10¢ lb.

10¢
19¢
49¢
39¢

INTRODUCING NEW FOOD GIANT

SHORTENING



PACKED BY ONE OF THE NATION'S LEADING SHORTENING MANUFACTURERS

3 POUND CAN 69¢

AUSTEX CHILI CON CARNE

WITH BEANS
LARGE
24 OZ. CAN

29¢

ORANGE-PEKOE LIPTON'S

TEA BAGS

16 COUNT BOX 23¢

BLACK TEA, 1/4 LB. 45¢

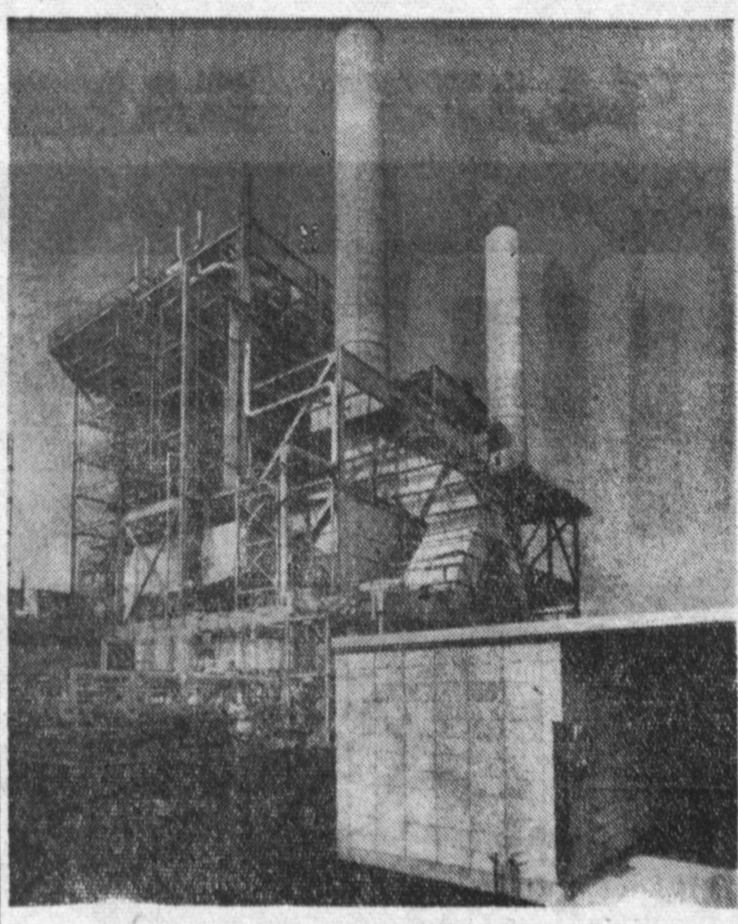
SACRAMENTO BRAND — CUTS AND TIPS, ALL GREEN, NO. 2 CAN
CUT ASPARAGUS 25¢

FOREST GROVE — HEAVY SYRUP — LARGE NO. 2 1/2 CAN
PURPLE PLUMS 19¢

KABUKI BRAND — 10 OUNCE GLASS JAR
Mandarin Oranges 25¢

HEMET BRAND — TALL CAN — LARGE RIPE
PITTED OLIVES 29¢

TIDE DETERGENT LARGE BOX 33¢	ZEST SOAP BATH SIZE 2 for 27¢	IVORY SOAP PERSONAL 4 for 25¢	JOY LIQUID DETERGENT 12 OZ. CAN 38¢	Reynold's Aluminum Foil 25 FT. ROLL 28¢
---	---	---	---	--



NEW GENERATING UNIT

The second 175,000-kilowatt generating units at Southern California Edison Company's Alamitos Steam station, near Long Beach, was placed in operation in February, approximately seven months ahead of the originally scheduled completion date.

Southern California Edison Co. Congratulates City

G. L. Blanchard, district manager for Southern California Edison, today added his congratulations to Torrance for being named an "All-America City" and noted that his company is proud of the part it has played in helping this city qualify for the honor.

As an indication of this city's growth, Blanchard pointed out that the number of electric meters served here by Edison has increased nearly 500 per cent in the decade following World War II. There were 4232 meters connected to Edison lines in Torrance in 1946, but the total had soared to 25,311 by the end of last year, he reported.

The Edison co. also is an important factor in Torrance's city government, Blanchard pointed out. Edison's municipal tax payment to Torrance for 1956-57 was \$63,694. The total taxes paid on all Edison properties in Torrance was \$356,940.

Edison has built four mammoth steam electric generating stations since World War II, and construction is now under way on two additional electrical giants.

Blanchard reported that the 200,000-kilowatt Unit No. 1 at Huntington Beach Steam station

is scheduled for completion in June of 1958, and a second unit—also 200,000 kilowatts capacity—is expected to go on the line by December of that year.

Unit No. 2 at Alamitos Steam station was placed in service in February of this year—approximately seven months earlier than was originally scheduled. The work of installing a sixth generating unit at Redondo Beach Steam station also is ahead of schedule, and the Edison co. expects to complete it in July of this year.

In addition to its conventional generating methods, the Edison co. is now pioneering in the new field of producing electric power with the help of the atom. The company's experimental generating plant near Santa Susana is designed to use heat from a sodium graphite reactor being built by Atomics International, a division of North American Aviation, Inc., for the Atomic Energy commission.

BOY SCOUTS GO ON WEEKEND CAMPOUT

Newly organized Boy Scout Troop 211 sponsored by Howard Wood PTA spent last weekend camping at Steeple Park near Santa Paula. Scout Master Don Cooke, accompanied by Joe Helphand and Raymond Ramsey, led the overnight encampment and also took the boys to the Fillmore fish hatchery.

The troop applied for its charter April 5 and the boys meet Wednesday evenings at the Wood School. They have already begun their treasury with profits derived from selling ice cream at the PTA carnival and selling lilies at Easter. May 18 has been set for a donut sale.

Scout patrol leaders are the Cobra Patrol, Mike Powers, and the Wolf Patrol, Dale Fouchaud.

Boy scouts include Steven Stanley, John Hall, Steven Brown, Michael Pooler, Cordie Jones, Bob Ramsey, David Ramsey, Kyle Mallett, Donald L. Mallett, Ronald Hixson, Ken Helphand, Nelson Stanley and James Goree.

Next outing is Saturday May 4, when parents and boys will visit Firestone Park. Also on May 25 the boys will visit O'Neill Park, a district camporee.

Other adults on the committee include chairman Larry Brown, assistant scoutmaster Tony Schnell, Gordon Jones, explorer advisor; Jay Nielsen, institutional representative; Helphand, advancement chairman; Virginia Jones, publicity.

LARGEST MAPLE DISCOUNT HOUSE

COME IN AND BROWSE
WARD-RICHARDS DISCOUNT HOUSE
 2318 REDONDO BEACH BLVD., REDONDO OPEN AT NOON

NEW CAR DIRECTORY

G.M.C. TRUCKS
 OLDSMOBILE - CADILLAC
CECIL L. THOMAS & SONS
 Terminal 3-5291 — PACIFIC at FOURTH, SAN PEDRO

DODGE - PLYMOUTH Frontier 2-2122
 SALES & SERVICE
WALTER G. LINCH
 312 PACIFIC COAST HWY. - 312 S. CATALINA, Redondo Beach

STUDEBAKER ORegon 8-4005
 Dealer Authorized by Studebaker Corporation to Service the Torrance Area
FRANK H. AFTON CO.
 240 N. MARKET, INGLEWOOD

INGLEWOOD NASH
 4351 W. CENTURY BLVD.
 (Just East of Car Line)
 OS. 7-8253 OR. 8-3186

VOLVO WHITTLESEY MOTORS
 TWO NEW LOCATIONS
 16707 S. Vermont 1500 Cabrillo Ave.
 DA. 3-1361 FA. 8-2585

SAVE 10% to 50% FROM FACTORY TO YOU!

PAINT FACTORY SAVINGS



ENAMEL Hi Gloss Plastic Enamel, Reg. 4.98 298	RUBBER BASE Interior Flat Reg. 5.98 360
1 Coat Flat Wall Paint Washable Reg. 3.25 198	Vinyl Plastic Paint Interior or Exterior Reg. 5.95 398
Stucco Oil Base Paint Reg. 6.00 298	NOW

PAINT THINNER 20¢
 BRING IN YOUR OWN CONTAINER OR BORROW FROM US (bulk) GAL.

TURPENTINE \$1.09
 100% PURE GUM, WATER CLEAR. 5 GALLON LIMIT (bulk) GAL.

LINSEED OIL \$1.79
 PURE BOILED SPENCER - KELLOGG 5 GAL. LIMIT. Bring own container (bulk) GAL.

ONE COAT LINSEED OIL BASE PURE PREPARED HOUSE PAINT 274¢
 GALLON

WINDOW SHADES 98¢
 MADE TO ORDER. 36"x6". RECOVERED ON YOUR ROLLER.

PLASTIC WALL TILE 41¢
 Guaranteed to last the life of building. Large selection. As Low As 2¢ piece

MIXED CEMENT 89¢
 90-LB. SACK

QUALITY STEP LADDERS

4-FT. **298** 5-FT. **378** 6-FT. **448**

9x12 LINOLEUM **FELT BASE RUGS 497**
 Choice of Patterns

FELT BASE LINOLEUM 48¢
 Heavy Weight Square Yard

Circle Linseed Oil Base HOUSE PAINT
 Specially designed to meet rugged outdoor use.
WHITE ONLY
 Per Gallon **179**

PLASTIC BASE LOG OIL
 Leaves a beautiful, rich smooth, shiny plastic finish that wears like iron. Perfect for redwood siding or trim, and redwood furniture.
 Per **\$249**

MORE THAN 1500 PATTERNS TO CHOOSE FROM Save 50%

FREE DELIVERY ON PAINT AND WALLPAPER

Old Quaker PAINT FACTORY
 AVALON BLVD. corner 213th ST.
 EAST TO AVALON THEN SOUTH ON AVALON TO STORE
 TE. 5-3185 - NEveda 6-1174 TORRANCE
 OPEN DAILY 7:30 A.M. to 8 P.M. SUNDAYS 10 A.M. to 4 P.M.

Crenshaw at Imperial