

**SERENE MEMORIAL PARK**  
Green Hills Memorial park, 25701 S. Western ave., overlooks the entire east slope of Rolling Hills.—Press Photo.

### Modern Methods Used by Torrance Van and Storage

Using the most modern methods, Torrance Van and Storage, 21809 Western ave., offers a variety of services, including local and long distance moving, storage, packing and shipping. So stated Giles Stadler, vice president and manager of the firm headed by R. J. Stadler.

All household goods are apertized, Stadler said, which means that they are not stored in the open but boxed and sealed tightly, the very latest in storing technique.

Torrance Van and Storage is also the common carrier in general commodities, serving many of the local industries and the entire Los Angeles area as of February of this year.

The firm also acts as the exclusive agent for Aero-Mayflower Transit co., and interstate moving service.

Located in the Western ave. building are household goods and the firm's offices, while the building at 1016 Border ave. is used for commercial storage and as a garage for the equipment.

The buildings represent a total of 20,000 sq. ft. of storage space.

### Green Hills Continues Development

An accelerated program of development started 13 months ago at Green Hills Memorial park, 25701 Western ave., is now within days of completion, Robert F. Hopper, general manager, stated today.

The program started with the acquisition of heavy duty earth moving equipment that has made it possible to rough-grade almost 30 acres of the park's property and to finish grading and planting in lawn of an additional seven acres.

This additional lawn development brings to a total of 32 acres the property that is fully developed, and assures the 11,000 pre-named owners of memorial property at Green Hills complete protection.

Two and one-half miles of hard surfaced roads and concrete curbs were engineered and completed in a "crash" program last November so that all lawn properties and mausoleums are now served by a complete network of roads.

Other facilities long planned and now completed were the removal of the maintenance yard to an obscure corner of the park and erection of maintenance sheds and structures to shelter and service the 16 vehicles and the heavy duty equipment needed to service the park. Hopper is most proud, however, of the "Sanctuary of the Cross," a magnificent room of Travertine marble, terrazzo and cathedral glass.

This room is dedicated to the inurnment of cremated remains. Owners of niches are given gold keys at time of purchase and the room will be locked at all times. The sanctuary is a continuation of the newly completed Hope mausoleum.

These graceful structures, as well as the projected Cypress mausoleum now being presented at pre-developed prices, overlook the entire east slope of the Rolling Hills. The response of the people of this area to this unique mausoleum concept has assured a continuing development of similar structures.

The last of this long-planned program is now in progress: the remodeling of the property and administration office in order to accommodate an increased staff and to offer more comfortable surrounding to be-reaved families.

### El Camino College Enrollment Increased by 7000 in 10 Years

Since its origin in 1947 with a total enrollment of 1100 students, El Camino college has grown to such an extent that today as it reaches a decade of service to the Centinela Valley, South Bay and Torrance area, the college boasts more than 8100 students on campus.

To keep pace with the projected enrollment at El Camino, a continuous building and expansion program is constantly in progress, according to Carl G. Artwedson, director of business at the college.

Currently under construction to facilitate the growth at the 16007 Crenshaw Blvd., location is a 16 room social science wing, which will be ready for occupancy approximately July 1.

Other Projects  
Two additional projects are scheduled to commence at that date. A men's shower room, lockers and exercise room will be erected north of the pools with a tunnel connecting the two buildings.

Also, a new warehouse and maintenance buildings will be constructed at the northwest corner of the campus parallel to Manhattan Beach Blvd. To

make room, the baseball diamond will be relocated to an area west of its present site.

Also scheduled is the erection of an applied arts building, which will be under construction by approximately December 1 west of the agriculture area.

In February, 1957, the college opened new additions to the science department in the form of physics and chemistry units. The new buildings are located between the life science and administration buildings and face Crenshaw Blvd. The new wing offers college students outstanding science facilities.

According to Artwedson and College President Forrest G. Murdock, many other permanent buildings are presently being utilized by El Camino students, as well as local residents.

First Class  
When the idea of a college in this area was conceived and originated, classes were scattered at various high schools in the district. Bungalows from military installations provided the first home for college

classrooms on its present location in spring of 1948.

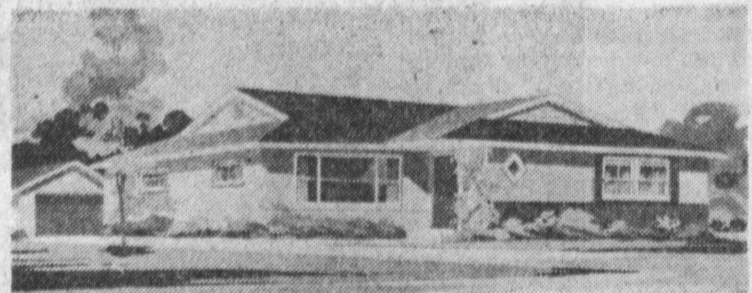
Following the significant day of May 27, 1948, when classes came to the Crenshaw campus, growth at the college has risen in all phases. The college has added permanent structures as rapidly as material shortages and finances permit.

Awards have become a byword at El Camino in recent years as students have achieved prominence in all fields of endeavor.

The campus newspaper, the Warhoop, has been honored on repeated occasions and has been the recipient of All-American junior college ratings for the last six consecutive semesters. The paper has also won the Dickson Trophy for newspaper excellence at UCLA.

Another El Camino activity, its forensics team, has also captured numerous awards throughout the western states for its achievements. Although El Camino has attained great laurels in its short but bountiful history, its success lies in the future of its students and achievements.

Sharp Rise in Enrollment  
The enrollment at El Camino has risen more than 700% since its origin in bungalows of the Santa Ana Air Force Base in 1946. Projected facilities on campus should provide classes for 15,000 students by 1962.



**QUALITY CONSTRUCTION**  
Illustration shows Alondra styling at Longwood Estates, Kauffman-Wilson veterans' development on Long Beach Blvd., just south of Artesia Blvd., in Long Beach. Home has three bedrooms and three baths.

### Kauffman-Wilson Firm Major Local Builders

Two of the most popular home-building projects developed for veterans in Torrance—Southwest Estates and Southwood Homes—are now practically sold out and provide a significant testimony on behalf of the many advantages for newly-settled families to be found in the expanding Torrance area and its surrounding localities.

The location of Southwood Homes is a case in point. This development's first unit was offered to the public in May, 1955. In less than a month, \$5 million in new homes had been sold.

Reason for Success  
Don Wilson, president of the 50-year-old Kauffman-Wilson builders, attributes much of this success to the Torrance neighborhood, citing this factor as a prime mover behind the outstanding success of Southwood's second unit, now nearly sold out.

Gratifying success is also being enjoyed by a Kauffman-Wilson group of new homes, Longwood Estates, in North Long Beach. Both veterans and non-veterans alike are buying heavily in this convenient community, surrounded by all the necessities that comprise an outstanding neighborhood—many churches of all faiths nearby, a huge shopping center within a few minutes of all the homes, public and parochial schools a couple of blocks away by a safe route for children, and more than 150 industrial and business employment opportunities within a convenient driving radius.

Quality Construction  
Quality construction and one of the area's finest locations are two of the reasons for the popularity of Longwood Estates—where homes all have three bedrooms and two or three baths and are available on remarkably moderate terms.

The homes in this neighborhood are available for veterans for minimum down payments and monthly payments as low as \$72.33 including principal and interest. Terms and financing are now in effect for non-veterans.

Spacious and airy, Longwood homes offer veterans the best in quality construction and modern conveniences for true Southern California suburban living.

They are available in eight different floor plans and 16 attractive exterior stylings ranging from contemporary modern to the always popular California ranch architecture.

Features include genuine "knock on the wall" lath and



**FOODS, COCKTAILS, ENTERTAINMENT**  
Among the outstanding restaurants in Torrance is the Palms located at 1925 Carson ave.—Press Photo.

### Palms Offers Dining and Entertainment

Started here over three years ago, the Palms Restaurant, 1925 Carson ave., owned and operated by Ray Bell and Mrs. Peggy Delaney, today is one of outstanding eating places in Torrance.

So successful was its operation from the start that a banquet room was added one year after the restaurant opened.

The restaurant, with a seating capacity of 130, also caters to banquets and parties. The Palms specializes in steaks and prime ribs and is noted for its Palms salads as well as its complete line of seafood and fowl.

Entertainment is offered Friday and Saturday nights. In addition to its attractive dining area, the Palms also features a congenial cocktail lounge.

The co-owners have had years of experience in the restaurant field. Bell was chef in the Harbor area for 18 years while Mrs. Delaney has been hostess at various restaurants in the area for 16 years.

tion from the start that a banquet room was added one year after the restaurant opened.

The restaurant, with a seating capacity of 130, also caters to banquets and parties.

The Palms specializes in steaks and prime ribs and is noted for its Palms salads as well as its complete line of seafood and fowl.

Entertainment is offered Fri-

day and Saturday nights. In addition to its attractive dining area, the Palms also features a congenial cocktail lounge.

The co-owners have had years of experience in the restaurant field. Bell was chef in the Harbor area for 18 years while Mrs. Delaney has been hostess at various restaurants in the area for 16 years.

The Palms specializes in steaks and prime ribs and is noted for its Palms salads as well as its complete line of seafood and fowl.

Entertainment is offered Fri-

### Cash-Carry Service at Local Dairy

Milk sold by Palos Verdes View Dairy, 22845 S. Hawthorne ave., is vacuumized for lasting freshness, Pete Radisch, manager, stated.

In addition to milk, the dairy offers bread, eggs, ice cream and other dairy products.

The cash and carry price provides a savings to customers who can drive right up to the

dairy and be served in the car, Radisch said.

Radisch has managed the local dairy for the past two years, having had his own herd of cattle as a producer before this. He has been in the dairy field for the past 15 years.

His son, Louis, 18, works as clerk while Vic Beard acts as processor.

**"SERVING"**  
**THE ALL-AMERICA CITY!**

- COCKTAILS
- PRIME RIBS
- STEAK DINNERS
- SEA FOOD • FOWL

(CHILDREN'S PORTIONS — ALL MEALS)

— OPEN —

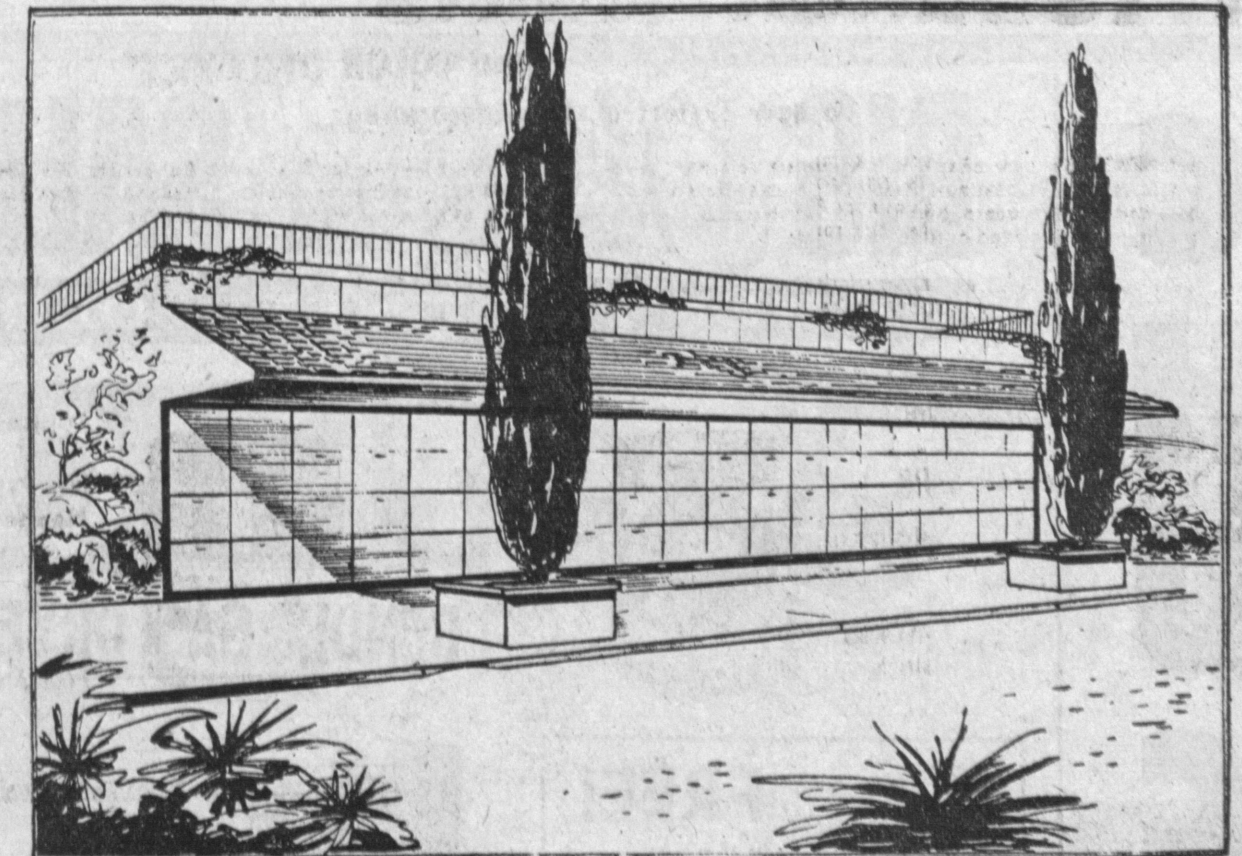
**WEEKDAYS — 11:00 A.M. - 2:00 A.M.**  
Saturdays, Sundays, Holidays—4:00 P.M. - 2:00 A.M.

**THE PALMS**  
1925 W. CARSON

**Your Continued Support Will Be Appreciated**

**VOTE "YES" on MAY 17!**

**The Associated Student Body**  
**El Camino College**



**LAWN PROPERTY**  
**MAUSOLEUM**  
**COLUMBARIUM**

**GREEN HILLS**

Western Ave. and Palos Verdes Dr. North  
27501 So. Western Ave. • San Pedro, Calif. family memorial estates

**South Bay**

**EQUIPMENT RENTAL AND SALES**

**HOSPITAL BEDS**

- HIGH, LOW BEDS • LONG BEDS
- BABY CRIBS • ROLL-A-WAY BEDS
- SAFETY BED RAILS •

**MATTRESSES**

- AIR FOAM • INNERSPRING
- FRACTURE MATTRESSES •

- FRACTURE FRAMES
- TRACTION EQUIPMENT
- WHEEL CHAIRS
- INVALID WALKERS

**— 24 HOUR OXYGEN SERVICE —**

**Call FAirfax 8-1166 - FRontier 2-8431**

**704 Torrance Blvd. Redondo Beach**