

Hi-Shear Develops Into Outstanding Rivet Firm

Hi-Shear Rivet Tool co., 2600 W. 247th st., Torrance Municipal Airport, was launched in the fastener business in 1943 by two partners, George S. Wing and Allan J. Kirk.

Two years earlier, in 1941, Wing invented the Hi-Shear Rivet while employed at North American Aviation. This rivet, devised to replace high strength shear bolts, offered design advantages of less fastener and structure weights, less space

needed, and faster installation time. The first airplane to use Hi-Shear rivets was North American's famous World War II fighter, the P-51 Mustang.

Obtain Machines
Hi-Shear's first home in Hermosa Beach shared quarters with a gas station. By pooling their savings and eating lightly, Wing and Kirk obtained a few machines and started to make the tool sets required to drive Hi-Shear Rivets. To satisfy customer demands, the partners started to produce collars and after moving to larger quarters, qualified to produce the complete Hi-Shear Rivet.

In 1946, when aircraft production was curtailed, the company entered cargo trailer and truck body designing and manufacturing. This venture created Transland co. a present subsidiary of Hi-Shear Rivet Tool co.

Since then, Transland has become a manufacturer of aircraft assemblies and crop dusting and spraying equipment for agricultural aviation. Today, Transland is starting full factory production on its new Ag-2 Airplane, designed by George Wing, Transland president. This new agricultural and forestry airplane was first flown at Torrance Municipal Airport on October 11, 1956.

Korean Conflict
With the start of the Korean conflict and the rapid development of high performance jet aircraft and missiles, Hi-Shear rivets were once again in great demand. Early in 1951 the company moved to its present production plant at 8924 Bellanca ave., north of Los Angeles International Airport. With

Transland Designs, Makes Farm-Forestry Airplane

Transland co., at the Torrance Municipal Airport, is recognized in this country and around the world as the designers and manufacturers of the Ag-2 agricultural and forestry airplane and aerial applying equipment for crop dusting and spraying aircraft.

Transland was founded as a corporation in 1946 in Hermosa Beach by George S. Wing and Allan J. Kirk, of the parent Hi-Shear Rivet Tool co., to produce lightweight trailer and truck bodies built to aircraft structure principles and assembly techniques.

Several years later Transland moved to larger quarters in El Segundo to do contract manufacturing and assembly work for local aircraft manufacturers.

Dust and Spray Equipment
In 1953 Transland became one of the first manufacturers of aircraft dust and spray equipment for the aerial application of dust and liquid chemicals for fertilization of plants, weed and insect control; and seeding of agricultural and forestry lands.

Anticipating the need of new agricultural aircraft, George S. Wing, Transland president, started engineering a completely new airplane, the Ag-2. The Ag-2 combines the best operating and safety features of the Ag-1 airplane, an experimental agricultural aircraft built in 1951 at Texas A. & M. College, with Transland experience gained from manufacturing crop dusting equipment and aircraft structures. Actual development of the prototype Ag-2 started in temporary quarters at the Torrance Municipal Airport in 1954.

In 1956 Transland moved into its new and expanded facilities to the north side of the airport to provide room for full scale factory production of the Ag-2.

The Ag-2's first flight occurred on October 11, 1956 at the Torrance Municipal Airport. This event was noted in newspapers and in aviation, chemical, agricultural and forestry publications throughout the world.

Forest Fire
Most newsworthy event to date occurred when Transland donated the Ag-2 and flight crew for use in the disastrous forest fire which raged in the nearby Malibu and Santa Monica mountains on December 26-29, 1956, to burn out 40,000 acres and destroying property valued in the millions. The Ag-2, working in close cooperation with the Los Angeles county fire officials, flew more than 30 flights in four days to drop 25 tons fire retardant chemicals in strategic fire areas. The Ag-2's ability to do these aerial drops was highly praised by Federal, State and local forestry and fire officials.

Full scale production and sales have started in the Ag-2 to meet the enthusiastic interest shown in the United States and in foreign markets. Local hiring of shop and engineering personnel is anticipated.

Transland is a California corporation. Its principal officers are George S. Wing, president; Allan J. Kirk, vice president; and A. E. Anderson, vice president. Transland's plant and office facilities in Torrance exceed 32,000 square feet with personnel totaling 40 employees at this date.

A year ago, Hi-Shear moved its general offices and Transland co. to its present 14-acre site adjacent to the Torrance Municipal Airport to provide the land and building facilities for an orderly expansion of future company activities.

At present the company has 280 employees and a total of 75,000 square feet of manufacturing and office space at its Torrance site and two production plants, one in Los Angeles and the other in Inglewood.

Savings-Loan Assets Total \$3 Million In 10 Months

On May 10, 1956, the only federally chartered and supervised federal savings and loan association in the entire Torrance-South Bay-Peninsula area opened its doors at 1425 Marcelina ave.

Today, less than ten months from that time, the association has acquired assets of almost three million dollars and has helped many hundreds of local residents build savings accounts and purchase and build homes. So stated Robert H. Finch, president and manager of the firm.

Residents in this area quickly accepted the many advantages of a federal savings and loan association, Finch went on.

Each Palos Verdes Federal Savings account is automatically insured against loss up to \$10,000 by the Federal Savings & Loan Insurance Corp., an agency of the United States Government.

Additional safety factors result from the nature of the investments made by Federal Savings institutions.

These investments are limited by law to first trust deeds on residential properties, securities of the United States Government and stock in the Federal Home Loan bank.

Charter Provisions
In its charter, issued by the Federal Home Loan Bank in Washington, DC, a major purpose of this institution is set out in this way: "to promote thrift by providing a convenient and safe method for people to save and invest money."

Palos Verdes Federal Savings is a part of the Federal Home

ALUMINUM STRUCTURES AT HARVEY

One of the newest industries in Torrance is Harvey Aluminum Structures, a division of Harvey Machine co. This new Harvey-activity engineers, fabricates, and erects aluminum structures.

This is the first time that aluminum structurals comparable in size and cost to structural steel have been made available for immediate delivery.

Projects suitable for structural aluminum include bridge structures, monumental signs, power substations, transmission towers, large buildings, marquees, warehouses, and related structural installations incorporating unusually large spans.

Structures are available as bolted units for field erection.

Advantages offered by aluminum structurals include design flexibility, high strength, low-cost maintenance, immediate availability, superior corrosion resistance, and lower foundation costs due to reduced weight.

Local Firm Participates In Exhibit

The National Supply co. was one of three Torrance industrial firms with exhibits in the 10th Western Metal Exposition at the Pan Pacific auditorium, Los Angeles, March 25-29, 1957. Attendance at this exposition broke all previous records, with visitors estimated at more than 70,000 for the 5-day run.

National's exhibit consisted of examples of high pressure air tank production in various stages of completion. The exhibit was planned to emphasize the extensive range of the plant for both steel production and machine tool application, including treatment.

SERVING "ALL-AMERICA" TORRANCE

Since 1941!

DIRECT SERVICE TO LONG BEACH - LOS ANGELES

Charter Busses Available

TORRANCE MUNICIPAL BUS LINES

M. A. CHAMBERLAIN, SUPT.

1730 Torrance Blvd. FAirfax 8-7402

PALOS VERDES VIEW DRIVE-IN DAIRY

- FRESH MILK DAILY AT WHOLESALE PRICES
- EGGS
- BUTTER
- COTTAGE CHEESE
- ICE CREAM
- BREAD

22845 HAWTHORNE BLVD.

On Hawthorne Just South of Sepulveda

FRontier 5-8615

Congratulations... TORRANCE "All American City"

Every resident of Torrance may well be proud that LOOK Magazine has selected Torrance for its "All-American City Award."

Carnation Company is proud to be a part of this "All-American City." It is entirely fitting that America's newest and most modern frozen food plant be located in the "All-American" City of Torrance. From its busy production lines come America's most delicious frozen pies... Carnation's SIMPLE SIMON frozen fruit, cream, meat and poultry

pies, frozen cakes, cookie rolls and pastry... for distribution across America.

But, most important are the people who make up the Carnation families in Torrance. They attend, and contribute to the schools and churches of the community. They provide, through their local earnings, a substantial purchasing power for the area, which combined with the money Carnation spends for local goods, services, and taxes mounts into thousands of dollars each year.

SIMPLE SIMON frozen pies Carnation Company

FROZEN FOODS DIVISION
21100 South Western Avenue, Torrance, California



Certi-Bond Has Variety, Low Prices

Certi-Bond, whose one of two stores located recently in Torrance at 501 S. Arlington, is a unique operation, selling department store merchandise to union members only.

It costs nothing to join Certi-Bond and receive the benefits of their cost-plus minimum prices.

Union members (AFL-CIO and Railroad Brotherhoods) only have to present their union identification to the receptionist at either of Certi-Bond's large stores. The Vernon store is located at 3050 S. Leonis Blvd.

Besides the usual department store type of merchandise, such as wearing apparel, furniture, electrical appliances, and automobile accessories, Certi-Bond also purchases new automobiles for its members at minimum "inside" prices. It also deals in insurance policies at lower rates, officials declared.

Purchasers of automobiles can get Certi-Bond arrangement for financing at lower than prevailing terms, it was pointed out.

Added recently at the Torrance store is the meat department offering fresh high quality meats, freezer meats and frozen vegetables.

A unique feature of this department is the credit convenience which allows a member to buy fresh or frozen meats and pay for his purchase in six monthly installments.

Credit is one of the services which Certi-Bond has developed further than most conventional retailing organizations, officials stated.

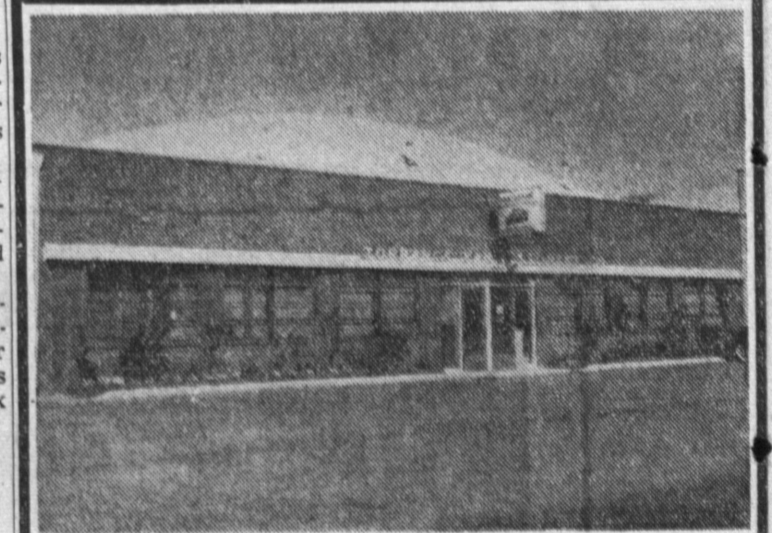
Besides the usual budget and installment credit, union members may purchase coupon books in \$50 units, use the coupon books to make purchases in any department, including meats, and pay for them in easy installments.

It was pointed out that Certi-Bond adheres closely to the restriction that only union members may belong, but the firm extends the courtesies of all Certi-Bond's services to guests who arrive in the company of a union member.

Brand names are the keystone of Certi-Bond's huge merchandising program.



ALL-PURPOSE STORE
Certi-Bond, which sells department store merchandise to union members only, also carries new automobiles, insurance, fresh meats and frozen vegetables and meats.—Press Photo.



WHEN IT'S TIME TO MOVE OR STORE
CALL
TORRANCE-MAYFLOWER

FAirfax 8-7021

COMPLETE INFORMATION — FREE ESTIMATES
● MOVING
LOCAL — LONG DISTANCE

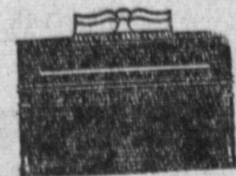
- CRATING
- SHIPPING
- STORAGE
- PACKING

Each storage article carefully packed in dirt-free pallet packing method eliminates box.

TORRANCE VAN & STORAGE CO.
EXCLUSIVE LOCAL AGENT
AERO MAYFLOWER TRANSIT CO.
21809 S. WESTERN AVE.

Baldwin PIANOS

NEW and USED
RENT to BUY
EASY TERMS



Many Styles - Finishes
We BUY and TRADE
Tune - Repair - Restyle

FICHT PIANO CO.
611 So. Gaffey St.
TE 2-6001