

CLARK MARKETS

Wonderful Meats, Always Well Aged and Well Trimmed Before Weighing To Save You Money!

HAM and Pineapple



Dole's Pineapple at special prices in grocery dept.

FARMER JOHN WHOLE or SHANK PORTION SMOKED HAM

... MADE FROM THE VERY FINEST LEAN EASTERN GRAIN-FED PORK. TENDERIZED FOR YOUR CONVENIENCE. A TREAT TO EAT FOR YOUR HOLIDAY DINNER.

BUY NOW AT YOUR FRIENDLY CLARK MARKET AND SAVE MONEY ON YOUR EASTER DINNER

49 c lb.

STOCK YOUR FREEZER FOR YOUR EASTER TURKEY DINNER
YOUNG, TENDER, PLUMP... WASTE-FREE, OVEN-READY
HEN TURKEYS (GRADE "A") **39** c lb.

FRESH FISH

A Complete Variety Received Fresh Everyday At Clark Markets

- FRESH CAUGHT SEA BASS **39** c lb.
- FRESH CAUGHT HALIBUT **49** c lb.
- WESTERN JAR OYSTERS 8-oz. Jar **45** c ea.

Lean, Meaty... U.S.D.A. Choice and Clark's "Wonderful" Steer Beef
SHORT RIBS... **29** c lb.

U.S.D.A. Choice and Clark's "Wonderful" Meaty Grain-Fed, Lean Steer Beef
BOILING BEEF **14** c lb.

QUICK FROZEN
STRATO STEAKS 12 2-OUNCE CELLO PKGS. **99** c

SLICED BACON



LEAN EASTERN CORN-FED - ALL CENTER SLICES POUND CELLO PACKAGE

42 c lb.

GROUND BEEF

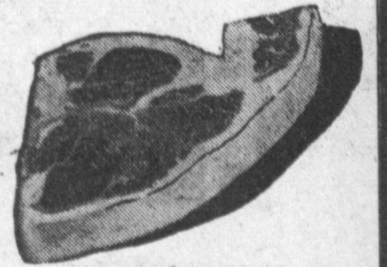


FRESHLY GROUND From U.S.D.A. Choice and Clark's "Wonderful" Beef. Sold in Pkgs. of 3-lbs. or over

29 c lb.

U.S.D.A. CHOICE AND CLARK'S "WONDERFUL" GRAIN-FED BEEF

STEAK AND ROAST SALE!



CHUCK ROAST
BLADE CUT U.S.D.A. CHOICE AND CLARK'S "WONDERFUL" EXTRA TENDER, EXTRA JUICY, **35** c lb.

RIB STEAK
U.S.D.A. CHOICE AND CLARK'S "WONDERFUL" GENUINE GRAIN-FED STEER BEEF **84** c lb.

7-BONE ROAST
U.S.D.A. CHOICE AND CLARK'S "WONDERFUL" WELL AGED, WELL TRIMMED **39** c lb.

CLUB STEAK
U.S.D.A. CHOICE AND CLARK'S "WONDERFUL" TENDER and EXTRA JUICY STEER BEEF **89** c lb.

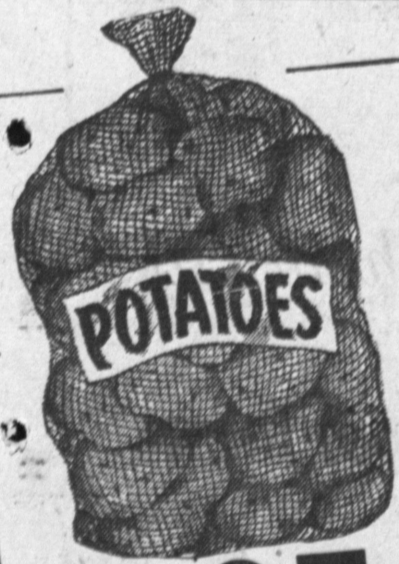
O-BONE ROAST
U.S.D.A. CHOICE AND CLARK'S "WONDERFUL" TENDER, MEATY GRAIN-FED **45** c lb.

T-BONE STEAK
U.S.D.A. CHOICE AND CLARK'S "WONDERFUL" EXTRA TENDER, JUICY GRAIN-FED STEER BEEF **98** c lb.

PORTERHOUSE
U.S.D.A. CHOICE AND CLARK'S "WONDERFUL" THE KIND YOU CAN CUT WITH A FORK **\$1.05**

N. Y. CUT STEAKS
U.S.D.A. CHOICE AND CLARK'S "WONDERFUL" GRAIN-FED STEER BEEF BONELESS **\$1.19**

U.S.D.A. CHOICE AND CLARK'S "WONDERFUL" GRAIN-FED, TENDER, JUICY STEER BEEF
BONELESS BEEF ROAST **69** c lb.



U. S. NO. 1 SELECT RUSSET

POTATOES
10 lbs. in plastic bag **29** c

Clark Markets Fruits & Vegetables

TOMATOES
SOLID RIPE... FINE FOR SALADS

2 13-oz. CELLO PKGS. **29** c

GRAPEFRUIT
SWEET JUICY ARIZONA FRUIT

8 POUND CELLO BAG **29** c

Clark Markets DELICATESSEN

FINEST QUALITY **SLICED PIMIENTO LOAF** **39** c lb.

CHEDDAR CHEESE
RICH CREAMY MILD AMERICAN **45** c lb.

HOLIDAY FINE CRISPY KOSHER STYLE AND REGULAR **DILL PICKLES** 1/2-GAL. JAR **49** c ea.

CLARK'S FINEST **WISCONSIN SLICED CHEESE**
PIMIENTO 8-oz. Pkg. **29** c ea.
SWISS
AMERICAN



"FAMOUS FOR LOWER FOOD PRICES!"

PUENTE AT ELLIOT AVE. IN LA PUENTE	WESTERN AT IMPERIAL AVE. IN LOS ANGELES	OLIVE AT WILMINGTON IN COMPTON	HWY. 101 AT HAWTHORNE BLVD IN TORRANCE
CRENSHAW AT COMPTON BLVD. IN GARDENA	VERMONT AT 140th STREET IN GARDENA	CLARK AT ROSE STREET IN BELLFLOWER	SEPULVEDA AT MARINE AVE. IN MANHATTAN BCH.

CLARK JEWELRY CENTER
KERMAN-MORILLO JEWELERS

- APPLIANCES • SILVERWARE
- CLOCKS • WATCHES • JEWELRY
- DIAMONDS • COMPLETE JEWELRY SERVICES

EASTER JEWELRY
by CORO ONLY **99** c

- RELIGIOUS MEDALS
- CRUCIFIXES
- CROSSES
- PRAYER BOOKS
- ROSARIES

— lowest prices anywhere —

TY-D-BOL
Keeps Toilet Bowl Clean... No More Work!
18-oz. Size **98** c

LIQUID DETERGENT WHITE KING
12-oz. Can. **38** c 22-oz. Can. **67** c

WHITE KING WATER SOFTENER
Lge. Pkg. **25** c Gt. Pkg. **49** c

GOLDEN CREME BREAD
The Very Finest Large Loaf **26** c

GOLDEN CREME BUTTER
Grade AA 1/2-Lb. Pkgs. **35** c

BEECH-NUT STRAINED BABY FOOD
4 4 1/2-oz. Jars **43** c

WHITE KING COLD CREAM SOAP
3 Regular Cakes **25** c

GRANULATED SOAP WHITE KING
Lge. Pkg. **34** c Gt. Pkg. **69** c

All Purpose Detergent WHITE KING "D"
Lge. Pkg. **33** c Gt. Pkg. **69** c

GERBER'S STRAINED BABY FOOD 4 reg. cans **43** c

VERNELL'S BUTTER MINTS, 7-oz. pkg. **29** c

DOG FOOD 2 lge. cans **27** c

MARTINELLI'S APPLE JUICE, qt. bot. **37** c

GOLD SEAL GLASS WAX, pt. can. **59** c