

Play Continues Two Weekends

Hampton Players current production "Present Laughter" by Noel Coward will run for two more weekends, March 29, 30, April 5, and 6 at the Breeze auditorium, 129 Pacific ave.

Patrons will sit in the new theatre, which has been designed with the audience in mind. The seats are comfortably padded, and erected on risers.

Bob Farnsworth, who directed the Players during the entire first four years of their existence, has returned after a brief absence to try his hand at horse shoe staging. With the assistance of Thelma Ledwidge, the cast has learned many new and interesting acting techniques.

All the Hampton "regulars" cast in this show are Torrance residents. They are Jim Reeves, Pat Rogers, and Dorothy Tunis. All three live in Hollywood Rivera.



PLOT THICKENS

Garry Essendine, played by Jim Reeves, Torrance, braces himself as the predatory Joanna, played by Diana Mitchell, advances with determination in the Hampton Players, production of Noel Coward's "Present Laughter." Remaining performances are March 29, 30, April 5, 6 at the Breeze auditorium, 129 Pacific ave., Redondo Beach.



IN A DAZE OVER ART

Many beautiful paintings and prints were on display at the first annual Art Show conducted by the Torrance Art group and sponsored by the Torrance Recreation department last weekend.—Press Photo.

READ, USE, PROFIT! Read ANYBODY can get anything he and use Torrance Press Classified Ads to fill your needs. Dial 8-2345. What'll you have? Dial FA. 8-2345.

24-HOUR SERVICE ON BROKEN GLASSES!

Bring in the piece! Most prescriptions can be duplicated in 24 hours or less



Depend on our 30 years experience for ALL your eyeglass needs. Scientific examination and finest quality lenses at moderate prices. Credit Terms.
 * 30 years in Harbor area
 * Open Fridays until 7:00
 * Saturdays until 1:00
 * Pensioners Welcome
 * Easy Budget Terms
 * Free Park & Shop
 1268 SARTORI, TORRANCE
 Phone: FA. 8-6602
 37 PINE AVE., LONG BEACH
 Phone: HE. 5-6219 - HE. 6-6739
 810 AVALON, WILMINGTON
 Phone: TE. 4-5464

DRS. SOSS AND KLINE OPTOMETRISTS



Rampley Jewelers

16701 Hawthorne Blvd. Lawndale FR. 2-1313

Paintings, Crafts, Prints, Sculpture on Display Here

Local art enthusiasts were treated to the first annual Spring Art show by the Torrance Art group last weekend sponsored by the Torrance Recreation dept.

Paintings of every description—oil portraits, landscape, watercolors, still-life, pen and ink—dominated the exhibit which was open to the public March 22, 23, and 24 at the Pool Shelter House. Included in the show were some beautifully sculptured figures carved out of wood, stone and clay. In the crafts division, a number of painted pots and lamp bases were on display.

Mmes. Clarke Harris, Wendel Peters, Harold Smith, Glen Runsted, and Robert Ward, members of the Epsilon Sigma chapter in Torrance were hostesses for the event and served a delicious assortment of cookies and coffee to the public.

In addition, two art films supplied by the El Camino College Visual-Aids department were shown, "Ballet Dancers by DeGas," and "Toulouse-Lautrec."

First, second and third place winners in the various divisions were, in order: WATER COLOR, "Mardigras" by Marian Cummings; "Jazz Session" by Allan Scharf; and "The Gambler" by Marian Cummings. OIL PAINTING, "The Ferris Wheel" by Allan Scharf; "Fruit With Leaves" by Vlasta V. Field; and "Rehearsal Break" by Bette Seidler. SCULPTURE, "Musicians" by Marcus White, "Seated Woman" by Don Wright, and "Modern Lady" by William Greene. PRINTS, "Still Life" by Don Wright, "Anatomical Head" by Lillian Baker, and "Peter and the Wolf" by Vickie Feldon, chairman of the Torrance Art Group. CRAFTS, ceramic pot by David Baeza.

Voted the "most favorite" by public ballot was Edythe Kerr's "Redwood Vista," an oil painting.

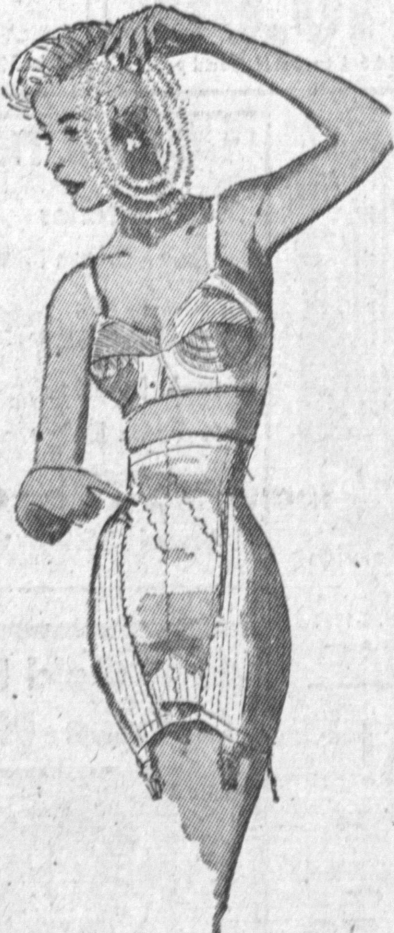
BAZAAR SET

Bargains galore will be offered to the public at the second annual bazaar by the Gardena Valley Jewish Center sisterhood, 14725 S. Gramercy place, on Sunday, March 31, beginning at 10 a.m.

A variety of merchandise will be offered, including clothing, household goods, novelties, and bakery goods. There will also be booths of games for children and adults, and food will be sold throughout the day.

Goodbye . . . to those pokey long front bones!

STA-FLAT Exclusively WARNER'S



No. 952 with strong Lené elastic sides. A down-stretching satin elastic back. Sizes 26 to 34.

at \$16.50

The BRA No. 2076

at \$2.50



USE OUR BUDGET CHARGE ACCOUNT NO MONEY DOWN 4 Months to Pay! Open Friday Nites Till 9

Moore's WOMEN'S WEAR

1274 SARTORI AVENUE

FA. 8-3342

have a happy Easter in a Mode O'Day fashion **6.99**

So much to choose from at Mode O'Day . . . at a low, very special price! The dress we show has the silken look, since the fabric is a shimmering blend of acetate and rayon. The bodice has the Empire look, 10-16.



OPEN FRIDAYS UNTIL 9 P.M.

MODE O'DAY

IN DOWNTOWN TORRANCE—Corner Post and Sartori Aves.



FINAL DAYS TO SAVE AT LE KING'S SHOES

THIS IS THE LAST CHANCE TO SAVE on all MEN'S, WOMEN'S and CHILDREN'S EASTER & SUMMER SHOES, While They Last

EVERY PAIR GOES COST or LOSS! REGARDLESS OF

Get Your Easter Shoes Now! **MEN'S SHOES** Odds and Ends **\$3.97**

Men's All Leather **SCUFF SLIPPERS** Reg. \$5.50 **\$2.00**

ODDS and ENDS **WOMEN'S DRESS SHOES** \$1.88 and \$2.88

BOYS' SHOES Including Blue Suede Chuckers, and Loafers - Sizes 3 1/2 to 6. REG. \$8.95 **\$4.88**

CROSBY SQUARE MEN'S **DRESS SHOES** Reg. \$15.95 **\$8.88**

Men's, Women's and Children's **GO AHEADS . . . \$1.44**
 Men's Keds **OXFORDS . . . \$2.44**

RIPONS
 MEN'S - Reg. \$3.95 **\$1.88**
 WOMEN'S - Reg. \$3.50 **\$1.88**
 CHILDREN'S - Reg. \$2.99 **\$1.66**

ALL SALES FINAL Subject to Prior Sale!

Quitting Business!

ALL NEW **WOMEN'S DRESS SHOES**
 GROUP 1 Values to \$8.95 **\$5.00**
 GROUP 2 Values to \$11.95 **\$5.88**

NEWEST EASTER AND SUMMER SHOES Etc.

NEWEST EASTER AND SUMMER SHOES White, Patent, Pink, Beige,

MEN'S "LUCY" **SHOES** ALL LEATHER Reg. \$10.95 **\$6.97**

DELMAR **FLATS** GROUP ONE Reg. \$5.95 **\$4.44** GROUP TWO Reg. \$4.99 **\$3.00**

Little Girls' EASTER SHOES

Patent, White and Pink
 Sizes 5-8 Reg. \$5.50 **\$3.44**
 Sizes 8 1/2-12 Reg. \$6.50 **\$3.88**
 Sizes 12 1/2-3 Reg. \$6.99 **\$4.44**

CHILDREN'S LITTLE YANKEE SHOES

Sizes 4-6 Regular \$5.50 **\$3.44**
 Sizes 6 1/2-8 Regular \$5.95 **\$3.88**
 Sizes 8 1/2-12 Reg. \$6.99 **\$4.44**
 Sizes 12 1/2-3 Regular \$7.95 **\$4.88**

Le King's

OPEN FRIDAY Til 9 P.M.

SHOE STORE - 1319 1/2 SARTORI - Torrance - FA. 8-2426

STORE FIXTURES FOR SALE