

Mrs. Carr Becomes Teacher

Mrs. Evelyn Carr, who will go to work for the Marcelina ave., has been active in the forefront in the campaign for an independent local school district, is now a teacher.

of the independence movement, she was elected to the first School Board in 1947, retiring in 1950.

Because of her efforts, one of the schools — Evelyn Carr elementary school, 3404 W. 168th st., — has been named after her.

The One, the Only, the Original Nardone's Present

THE HOLLYWOOD-RIVIERA STORY

— Starring LOUIE and ANGELA

Sun Never Sets on Nardone's Pizza

Somewhere . . . be it late at night . . . or be it early in the morning . . . Someone is gazing at a delightful, delectable, tantalizing Nardone Pizza. Of course, most of them are gobbled up immediately after they leave Louie's steaming hot oven on the premises in the Hollywood Riviera district, and no wonder!

But don't forget. A lot of his pizza is put up to take out - To be eaten at home at a more convenient time . . . Cheese, anchovie, sausage, mushroom, pepperoni, beef and onion. All this keeps wife Angela pretty busy loading up a continual clamoring line of repeat customers.

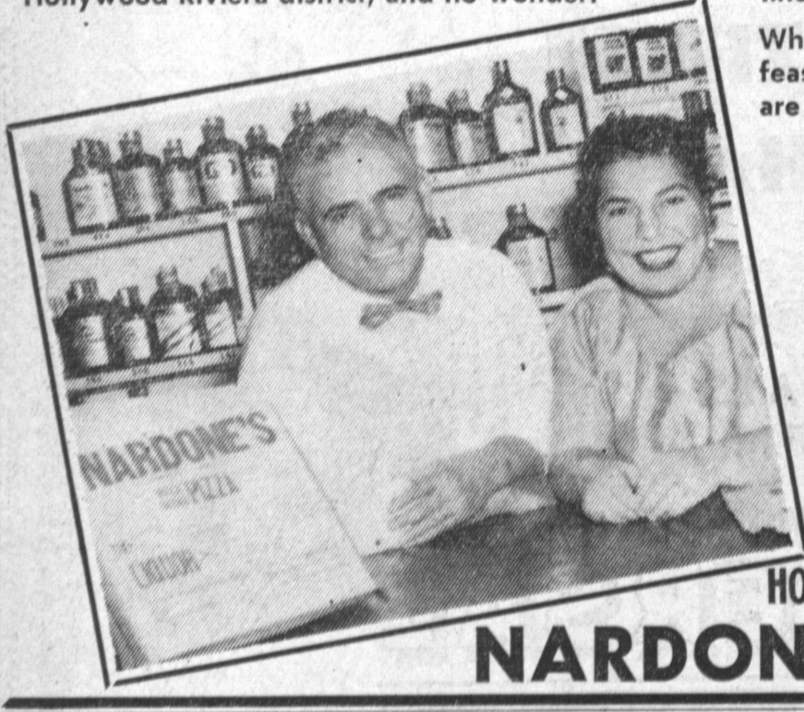
Whether you dine on the premises or enjoy the feast at home, you'll agree the Nardone specialties are absolutely—Yes, absolutely—the most!

- SPAGHETTI & MEAT BALLS
- RAVIOLI - LASAGNA
- BARBECUED CHICKEN ITALIAN STYLE
- BARBECUED BEEF DIPS
- IMPORTED FOODS - SANDWICHES

— Open Sundays, Too —

FR. 5-5110

HOLLYWOOD RIVIERA 1810 S. Catalina
NARDONE'S PIZZA HOUSE



'FOOD CIRCUS:' Foods Co. market, 174th street and Crenshaw boulevard, Saturday will play host to Chef Milani, who will bring his spectacular "Food Circus" to the market parking lot at 11 a.m. Highlight of the occasion will be the personal appearance of the internationally-famous chef. Prizes will be presented, and there will be no admission charge, market officials point out.

Market Slates 'Food Circus'

Internationally-famous Chef Milani will bring his spectacular "Food Circus" to the Foods Co. market, 174th street and

Crenshaw boulevard, at 11 o'clock Saturday morning to provide fund for local children and their parents.

Among the featured acts to be presented will be Chico Dell, with his magical chimpanzees and monkey act; Capt. Charles Frank and Sonita, the trained Indian elephant; Zimbo, the circus clown and his musical antics; Johnny Cline with his pony and dog act from the Clyde Beatty circus; Kumar of India, internationally famous, recently of the Ed Sullivan show; and Wolandi, world famous clown, with his unicycle act, juggling, and magic bits and accordion. There also will be free rides for the children, according to store officials.

During the performance, many prizes will be presented by Chef Milani. Event will be staged on the market parking lot. There will be no admission charge.

Board Against Public Hospital District Here

The board of directors of the Torrance Chamber of Commerce voted unanimously at their last regular meeting to endorse the public supported Little Company of Mary Hospital campaign and to oppose any attempt to establish a tax-supported hospital district in Torrance.

stated that the board felt that when the Little Company of Mary hospital was completed, the pressing need for hospital beds for citizens in Torrance would be alleviated.

It was also felt, Fitzgerald added, that a newly formed hospital district would place a tremendous burden on the homeowner and businessman as opposed to the voluntary, tax-free plan advocated by supporters of the Little Company of Mary hospital.

Manager Dick Fitzgerald

Men's Shoes Sale-priced

DURING **STOCK REDUCING SALE!**

SAVE 1/3 to 1/2

CLOSEOUT! LIMITED NUMBER

MEN'S SHOES \$5.00 ONLY

ON FAMOUS NAME BRANDS Values to \$17.95 (Not All Sizes in Every Style)

Open Fri. 'til 9 p.m. Across From Post Office Downtown Torrance

Fenwick's

Quality Shoe Repairing SINCE 1935

1420 MARCELINA AVENUE • TORRANCE

DID YOU KNOW?

TV has universal appeal. When in need of service—Call Us. We guarantee to do excellent work at reasonable prices.

FA. 8-6606

TV SPECIAL

★ ANY MAKE or MODEL

TELEVISION REPAIRED

— 8 YEARS REPAIR EXPERIENCE —

\$3.50 All Work Guaranteed 90 Days

BAKER'S

TELEVISION and APPLIANCES

1344 EL PRADO FA. 8-6606

OPEN DAILY 9 TO 9 P.M.

"Folks! You Get the BEST DEAL From the OWNERS! We Employ NO Salesmen!"

First Aid Course Set

A Standard First Aid course to be held Monday and Wednesday evenings at North High school will be offered by the Adult Education department, Torrance Unified School District, and Torrance chapter, American Red Cross, beginning Monday, January 28.

This course is designed to teach emergency care for the injured and accident prevention. It meets requirements for bus drivers' permits and is recommended for teachers and youth leaders as well as parents. Red Cross Standard First Aid certificates will be awarded at the end of the course. Mrs. Marguerite Ferguson will be the instructor.

Registration will take place in the classroom, Room 11, at North High school, 182nd Street at Yukon.

For any further information telephone FA. 8-2272.

Fairless Reports on Expansion

5,096,060 Tons of New Steel Capacity in '56

Just one year ago, in announcing that the country's steel companies were speeding up increases in their steelmaking capacity, I said that "during the next three years they plan to build 15 million tons of new capacity." The estimated cost was \$3 billion.

Now, 12 months later, I am able to report that these company programs of expansion are moving ahead on schedule.

With the addition of 5 million tons of new capacity in 1956 America now is equipped to produce 133.5 million tons of steel annually.

That is more than 40 per cent of the total for the whole world.

Steel Gauges Nation's Strength

There is a measure of comfort for all of us Americans in that fact, since steel is one of the important yardsticks of national strength. No other country can approach our production of this basic metal.

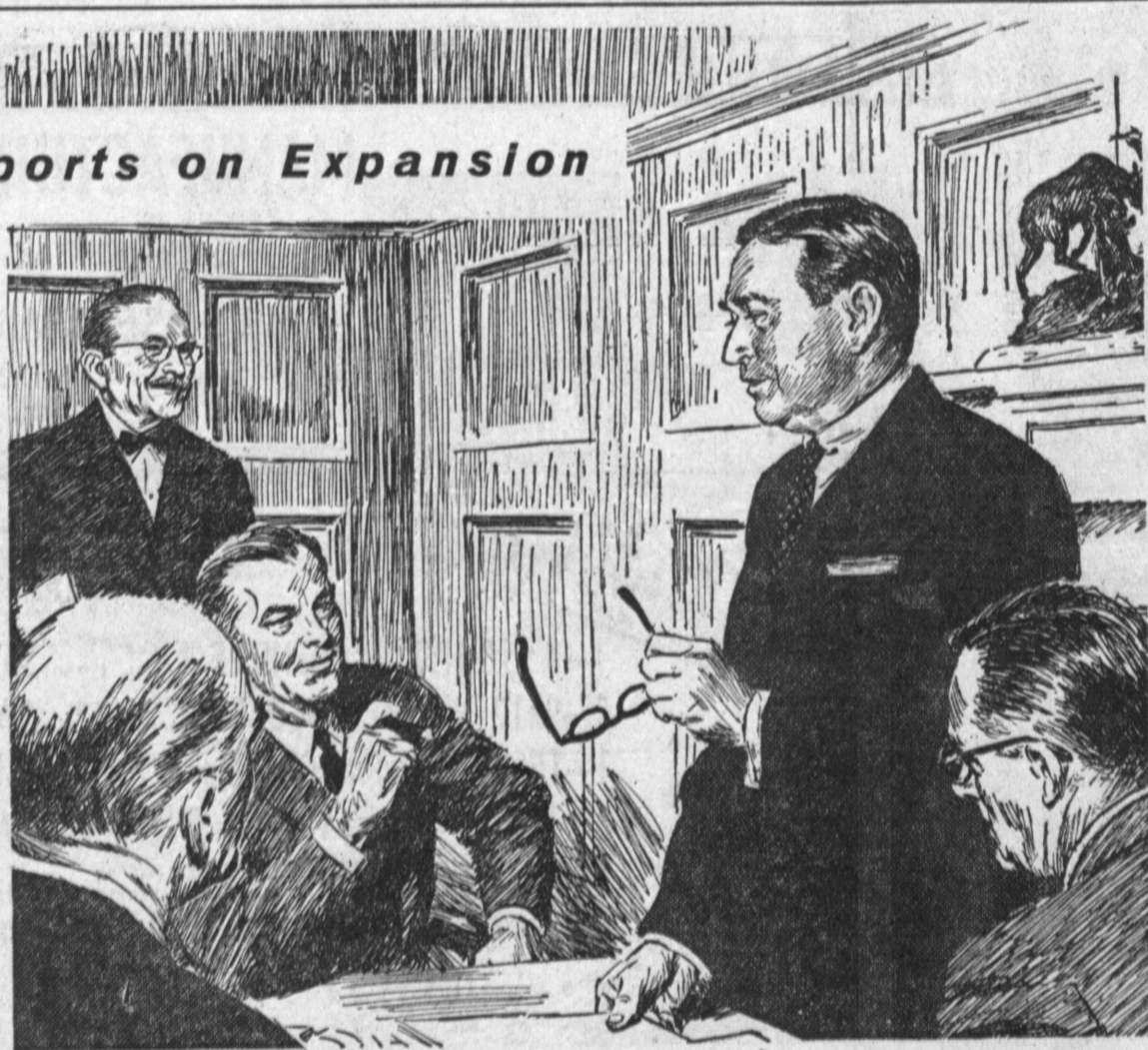
Russia has the next largest capacity but this is only about one third of the American total.

The need for accelerated expansion is even more apparent now than one year ago. Many new and pressing requirements for steel have emerged since my report of last January.

Suez brought into bold relief the urgent need for a larger fleet of tankers. Roadbuilders broke ground on the \$33 billion interstate superhighway system. Our country's school building program is being speeded up.

Defense Cannot Be Neglected

And the national defense program in these times of world tension requires many new types of steel.



Meanwhile, the normal demand for steel continues to grow with the rise in population and in living standards.

In 25 years the country's population has increased by 36 per cent and the per capita use of steel in America in that period has gone up from 469 pounds to 1,390 pounds, or 196 per cent.

Keeping abreast of all these added needs for steel in our country is the job and responsibility of the steel companies. Yet every American has a stake in that job because without enough steel in the years ahead the nation could not maintain its world position.

But if the steel companies are to maintain the current pace, let alone to accelerate it, all of us should be aware of the difficult hurdles they have to clear in achieving this goal.

Vast Capital Must Be Raised

The biggest hurdle of all is that of raising the capital funds to build their new plants and facilities. That calls for profits sufficiently attractive to hold the confidence of investors and lenders.

Unfortunately, many companies in steel and other industries are suffering from a malady known as "phantom profits"—figures which must be reported as profits subject to taxes but are really costs of doing business.

This comes about because our Federal Tax Laws make no allowance for the effects of inflation. Under these laws an

industrial company is allowed, in theory, to save up enough money over the life of a piece of equipment to replace it when it wears out.

But the catch is that the company is allowed to recover only the original cost of that piece of equipment, whereas the actual cost of replacing it may be three or four times as much, because of inflation.

Thus, the amount recovered through "depreciation" under the present tax laws is not nearly enough to pay for replacing the worn-out equipment. Consequently American industry must use a substantial part of its so-called profits just to replace its facilities as they wear out—just to stand still.

Constant Supply Is Essential

This seriously impairs industry's ability to expand as rapidly as it should in the national interest. That is especially true in the steel industry because steel-making equipment is enormously costly and has an unusually low rate of depreciation.

But with continued understanding and support of the American public, this nation's many individual steel companies will surely succeed in the effort to keep steel always available for the thousands of purposes it serves. America and steel must grow together.

B. J. ...
President

AMERICAN IRON AND STEEL INSTITUTE

COMPANY MEMBERS OF AMERICAN IRON AND STEEL INSTITUTE IN THE UNITED STATES ARE: ACME STEEL COMPANY • ALAN WOOD STEEL COMPANY • ALLEGHENY LUDLUM STEEL CORPORATION • ANCHOR DRAWN STEEL COMPANY • ARMCO STEEL CORPORATION • ATLANTIC STEEL COMPANY • THE BARCOCK & WILCOX COMPANY • TUBULAR PRODUCTS DIVISION • BETHLEHEM STEEL COMPANY • BRAEBURN ALLOY STEEL CORPORATION • A. M. BYERS COMPANY • THE CARPENTER STEEL COMPANY • THE CLEVELAND-CLEVELANDS IRON COMPANY • THE COLD METAL PRODUCTS COMPANY • COLONIAL STEEL COMPANY • THE COLORADO FUEL AND IRON CORPORATION • COLUMBIA STEEL & SHAFING COMPANY • COLUMBIA TOOL STEEL COMPANY • CONNORS STEEL VULCAN COMPANY • DAMASCUS TUBE COMPANY • DETROIT STEEL CORPORATION • EASTERN STAINLESS STEEL CORPORATION • ERIE FORGE & STEEL CORPORATION • A. FINK & SONS COMPANY • FIRTH STERLING INC. • FRET-MOON TUBE COMPANY INC. • GRANITE CITY STEEL CORPORATION • GRIFFIN MANUFACTURING COMPANY • THE M. A. HANNA COMPANY • HARSCO CORPORATION • INLAND STEEL COMPANY • INTERLAKE STEEL PRODUCTS COMPANY • MYSTIC IRON WORKS • NATIONAL-STANDARD COMPANY • LATHROP STEEL COMPANY • E. J. LAVINO AND COMPANY • LONE STAR STEEL COMPANY • LUKENS STEEL COMPANY • IRON CORPORATION • KILBY STEEL COMPANY INC. • LAGLEDE STEEL COMPANY • LATROBE STEEL COMPANY • LITTLETON STEEL COMPANY • LITTLETON TUBE COMPANY • MCDONALD STEEL CORPORATION • MILL STRIP PRODUCTS COMPANY • MOLTRIP STEEL CORPORATION • JESSOP STEEL COMPANY • JONES & LAUGHLIN STEEL CORPORATION • JOSLYN MFG. & SUPPLY COMPANY • KAISER STEEL CORPORATION • KESTONE DRAWN STEEL COMPANY • THE MAHONING VALLEY STEEL COMPANY • CLAYTON MARK & COMPANY • MARYLAND FINE & SPECIALTY WIRE COMPANY • PITTSBURGH TUBE COMPANY • PRECISION STEEL CORPORATION • REPUBLIC STEEL CORPORATION • RESEARCH PARTS & ENGINEERING CORPORATION • JOHN A. ROEBLING'S SONS CORPORATION • NATIONAL STEEL CORPORATION • NORTHWESTERN STEEL & WIRE COMPANY • OGLEBY, NORTON AND COMPANY • PICKANDS MATHER & COMPANY • PITTSBURGH COKE & CHEMICAL COMPANY • PITTSBURGH STEEL CORPORATION • ROTARY ELECTRIC STEEL COMPANY • SHARON STEEL CORPORATION • THE SHENANGO FURNACE COMPANY • SPANG CHALFANT, DIVISION OF THE NATIONAL SUPPLY COMPANY • THE STANDARD TUBE COMPANY • SUPERIOR STEEL CORPORATION • SUPERIOR TUBE COMPANY • SWEPKO TUBE CORPORATION • TENNESSEE PRODUCTS & CHEMICAL CORPORATION • TIMKEN STEEL AND TUBE DIVISION OF THE TIMKEN ROLLER BEARING COMPANY • SWEET'S STEEL COMPANY • SWEPKO TUBE CORPORATION • UNIVERSAL-CYCLOPS STEEL CORPORATION • VALLEY MOUND AND IRON CORPORATION • VANADIUM-ALLOYS STEEL COMPANY • WALLACE BARNES COMPANY DIVISION OF ASSOCIATED SPRING CORPORATION • WASHINGTON STEEL CORPORATION • WHEATLAND TUBE COMPANY • WHEELING STEEL CORPORATION • WOODWARD IRON COMPANY • WYCKOFF STEEL COMPANY • THE YOUNGSTOWN SHEET AND TUBE COMPANY

TORRANCE SHOE MART Open Mon. & Fri. Evenings to 9 P.M.

1330 SARTORI

DRASTIC CLEARANCE

WOMEN'S HI-HEEL SHOES

All suedes, leathers and vinylite high heels in pumps, spring-o-laters and sandals—newest styles and patterns.

NOW \$4.99 pr. Formerly \$8.00 to \$10.00

Not all sizes in all styles. AAA to B Widths

MEN'S and BOYS' OXFORDS and LOAFERS

Short lots and discontinued patterns of former \$8 to \$10 men's and boys' durable shoes.

NOW \$6.00 pr. UP TO SIZE 12