

Anniversary SALE

JANUARY
3-4-5-6
4 BIG DAYS

FOODS CO. markets

910 W. Santa Barbara
at Vermont

174th &
Crenshaw

PACIFIC STA-CRISP FRESH CRISP CRACKERS



1-LB.
PACKAGE.

15¢

SPRINGFIELD HEAVY BODY TOMATO SAUCE

20

Buffet
Cans

\$1



CHUBBY HI PROTEIN

DOG FOOD

20

TALL
CANS

\$1.00

KERN'S or SPRINGFIELD

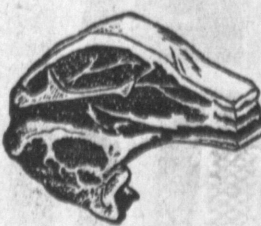
TOMATO CATSUP

8 Tall 14-oz. Btls. \$1.00

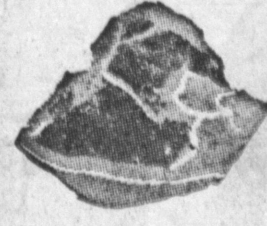
"GUEST QUALITY MEATS"

STEAK SALE

Positively no U.S. Good Grade or Packer's Label. Every cut of beef marked U.S.D.A. Choice.



U.S.D.A. CHOICE SHORT CUT
RIB STEAK 79¢ lb.



U.S.D.A. Choice, Tail Completely Removed
T-BONE or CLUB 93¢ lb.



U.S.D.A. CHOICE BONELESS
ROUND STEAK 69¢ lb.



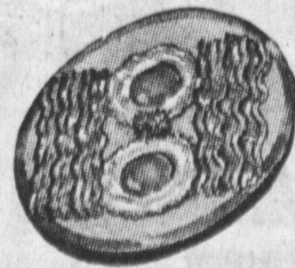
U.S.D.A. Choice, Tail Completely Removed
PORTERHOUSE 95¢ lb.



U.S.D.A. CHOICE BONELESS
SWISS STEAK 69¢ lb.



U.S.D.A. CHOICE, BONELESS
TOP SIRLOIN \$1.09 lb.



HORMEL'S
VALUE
BRAND
SLICED

BACON

39¢ lb

FOODS CO. QUALITY
HOT - SMOKY
OR REGULAR

PORK SAUSAGE

1-LB. ROLL

39¢



FRESH DRESSED
CUT-UP
PAN READY
TENDER, PLUMP

STEWING

HENS

3-4 LBS. AVERAGE WEIGHT

27¢ lb



SLICED NORTHERN

HALIBUT STEAKS

49¢ lb.

BEANS JUICE JUICE STEW SERVES

SPRINGFIELD 17-OZ. CAN BLUE LAKE 8 for \$1
SPRINGFIELD HEAVY BODY 46-OZ. CAN 5 for \$1
PARKDALE UNSWEETENED 24-OZ. BOTTLES 6 for \$1
MARLO 1 1/2-LB. CAN 3 for \$1
MAR-V-LUS STRAWBERRY 20-OZ. JARS 3 for \$1

DELICATESSEN

JOHN ALL MEAT

1-lb. Pkg.

FRANKFURTERS

39¢

49¢
39¢ lb.



GRAND TASTE SLICED

COTTO SALAMI

49¢ lb.

CHALLENGE "AA" BUTTER 1-lb. 71¢
JAN-U-WINE - 303 Can 16¢
BEAN SPROUTS 12-oz. 29¢
KERN'S STRAWBERRY PRESERVES 12-oz. 29¢

HIGHLAND SYRUP 12-oz. Jar. 31¢
JOLLYTIME POPCORN 10-oz. Can 21¢
KRETCHEMER - 12-oz. WHEAT GERM 35¢

HORMEL With Beans - 15-oz. CHILI CON CARNE 29¢
JONNY MOP REFILLS 29¢
KARO Blue Label SYRUP 1 1/2-lb. 24¢

HOLLYWOOD - 6 Pack CANDY BARS 20¢
JACK AND BEAN STALK SUPER PEAS 17-oz. 19¢
KITCHEN CHARM - 100-ft. WAXED PAPER 19¢

RS., FRI., SAT., SUN., JAN 3, 4, 5, 6

174th AND CRENSHAW