

WALTER'S REXALL DRUGS

APPRECIATION SALE!

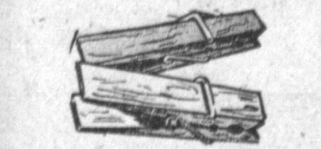
ALL THE THINGS OUR GOOD FRIENDS NEED



Tumblers 10c
Reg. 19c



Washcloth 10c
Reg. 19c



Clothes Pins 5c
Dozen
3 Doz. Per Pkg.



BRITE STAR ICICLE
Reg. 25c Pkg.

5c
While Quantities Last
Limit 5 to Customer

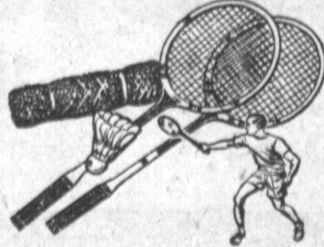
COTTON 19c
Reg. 25c

GARLAND 19c
Reg. 25c

INDOOR LITE SET

American Made, with
7 Westinghouse Bulbs
Reg. \$1.69
2.79

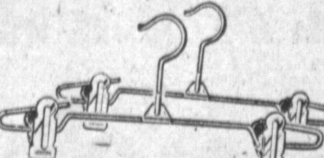
PLUS LARGE SELECTION OF TRIMMINGS, ORNAMENTS and OUTDOOR LITE SETS



Badminton \$2
Reg. 3.98



Coin Purse 19c
Reg. 29c



Skirt Hangers 10c

The Millionaire KNIFE FINEST QUALITY

14 FULL SIZE IMPLEMENTS IN ONE!

COMPACT 4 1/2" KNIFE (Stainless Steel) **3.99**

Includes: BONE STAG HANDLE, CORE SCREW, DIMPLE, FILE & SCREW DRIVER, CARRYING RING, PUNCH, FORK (Stainless Steel), BOTTLE OPENER, SCISSORS, GENUINE LEATHER BELT HOLSTER.

Gigantic Value!

STANDARD BALL PEN REFILLS

* FITS MOST RETRACTABLE PENS --- SMEAR PROOF! --- GUARANTEED!

7c

Big TEA SET For Your Little Girl!

Includes: 4 dinner plates, 4 spoons, 4 cups, 4 saucers, 4 napkins, 4 forks, 4 knives, 4 tumblers, 4 condolabro, butter knife, pie knife.

40 Pc. TEA SET BY GOTHAM

• SOFT POLYETHYLENE PLASTIC
• BEAUTIFUL PASTEL COLORS
• COMES IN GIANT DISPLAY BOX

2.99

REG. 19.95 — WALES

PORTABLE RADIO \$13.95

REG. 89c — ONE POUND

CHOCOLATE COVERED CHERRIES 59c

BIG VALUE 90 To A Box

ENVELOPES 27c
Reg. 39c

SPECIAL!

7.95 VALUE SIX-PIECE

STEAK KNIFE SET ONLY 2.98

• HOLLOW GROUND • SERRATED EDGE

Stainless steel blades made in Sheffield, England. Guaranteed sharp. Sure-grip design Lustrex handles with Lustre-Sheen finish.

NOW AT YOUR **Rexall** DRUG STORE

VITAMIN C TABLETS

100 MG. - 100 Tablets

Special... **59c**

VITAMIN B COMPLEX

100 Tablets

98c

THERAPEUTIC

VITAMIN FORMULA

100 Capsules... **\$1.98**

YOU'LL BE GLAD YOU SHOPPED AT

WALTER'S REXALL DRUGS

174th and Crenshaw
(Next to Foods Co. Market)
DA. 3-3310
"Quality and Confidence"
From Your Prescription Drug Store

Strike...

(Continued from Page 1)

tion with the "present inferior insurance plan."
The insurance issue was then set aside as a result of a deadlock.
The company stated that it presented the balance of its proposal for complete agreement after this, including a new wage schedule.
The union claims that not a single cost item of the union's proposal had been discussed and that the company's contract was an ultimatum for all practical purposes.

Wages

The company's wage offer included an immediate increase in each rate, ranging from 12.9 to 14.5 cents per hour, also cost-of-living adjustments. The difference between the company's offer and the union's demand amounts to 2.1 cents.
The union was willing to reduce the original demand for \$1.82 — the lowest wage per hour paid by the Basic Steel companies of the nation as well as many other companies in this area—doing similar work—to \$1.77 per hour with a seven cent spread, officials said.
The union states that if the company agreed to an additional two cents per hour wage increase on each wage rate and retroactivity there would have been no dispute on wages.

While the company offered a cost of living adjustment schedule, the union said that this was only common in long term contracts such as this.
Certain other proposed benefits are also said to be common practice.

Signals...

(Continued from Page 1)
the four-corner signals on major intersections as the money is made available.
At present there is only enough money for one other such signal.
Councilman Bob Jahn asked that this signal be placed at 182nd street and Crenshaw boulevard.
The council, however, ordered an overhead signal there and asked the Traffic Commission to study the placement of the one four-corner signal which is left.

News Briefs...

(Continued from Page 1)
presented to the council. The meeting is meant for straightening out major and minor differences as much as possible.
SUPERINTENDENT OF BUILDING: Lee Sehens has been appointed to the post of superintendent of building. Sehens worked formerly for the city of Compton.

Journalism Opportunities Stressed at El Camino JC

Increasing demands for trained personnel to fill journalism positions on community newspapers throughout the state are reflected locally at El Camino College, where job opportunities for junior college-trained journalists exceed the number of available students.

EL NIDO CONTRACT AWARDED

Supervisor Kenneth Hahn announced today that the board of supervisors has awarded a contract for major improvements at El Nido park to the Robert Miller construction company for \$27,899.

Work under the contract will include the construction of a public comfort station and grading to specification of a large area of the park for other improvements scheduled there later.

El Nido park is located at 182nd street and Kingsdale avenue and serves the people of Lawndale, El Nido, Hawthorne, Torrance and Redondo Beach.

Although the park was acquired several years ago, no major improvements were made there until recently when Supervisor Hahn succeeded in getting approval of a new community recreation building and a number of pieces of playground equipment.

The park is a popular camping area for Boy and Girl Scouts and other youth groups. All improvements have been planned so as to preserve the primitive atmosphere of the park for the use and enjoyment of campers.

and yearbook, a public relations class, photography, and classes in news writing, feature writing, copy reading and editing, with all available for students next semester. An advanced reporting class is offered each fall.

"Staffs are anxious to recruit new students with experience in publications as well as those who plan to enroll in both laboratory and lecture classes in journalism. Several editorial opportunities will be available to such people next semester," W. A. Kamrath, coordinator of public relations, revealed, adding that training for students in business fields is also available in the publication laboratories.

DO YOU NEED DRAPERIES?
If so, then you can't afford to miss
BAER'S ad on page 32

Refinance Your Home For the Money You Need

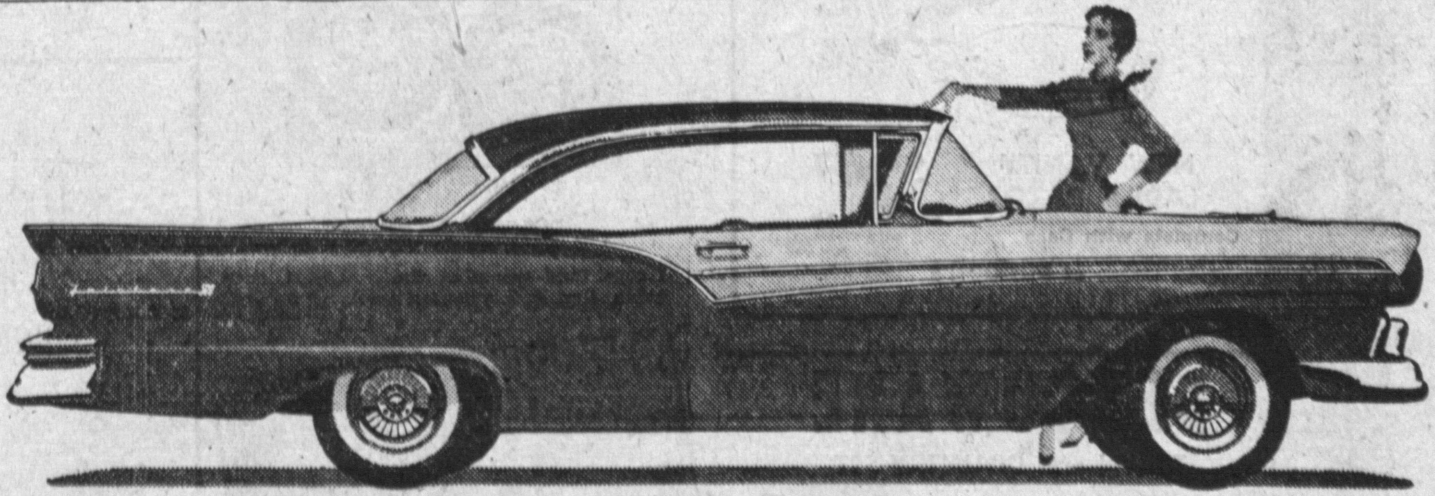
- ★ Make your loan application
- ★ Appraisal will be prompt
- ★ Money paid on approval
- ★ New loan can reduce payments
- ★ Terms to suit your budget

A refinancing loan on your home is the safe, easy way to get the money you need without adding to your monthly payments. Usually your monthly payments on your new loan are less than those presently being made. Come in today for full details.

First FEDERAL SAVINGS AND LOAN ASSOCIATION of San Pedro

LOMITA BRANCH
Principal Office in San Pedro

2233 LOMITA BOULEVARD
DAvenport 6-6143



The exciting Ford Fairlane 500 Club Victoria (above)—over 17 feet long—is one of two new, bigger Ford sizes this year.

If you think it looks new...
wait till you drive it!

- ... For there's where Ford's newness really pays off
- ... in melting mountains... in smoothing the bumps
- ... in straightening the curves



You can see that Ford's longer, lower Sculptured Look makes other cars look downright old-fashioned. But the part you can't see—the new "Inner Ford"—is what shows its stuff when you drive a Ford. It's revolutionary from the wheels up! And it feels it.

Ford's wider frame lets you sit sweet and low. And Ford's new front suspension, rear springs and new easy handling are part of the scheme to make you think every road is cloud-smooth.

The magic touch of the new Ford power plants makes mountains disappear. What looks like uphill feels like downhill. You get this surging power in a wide choice of Silver Anniversary V-8 engines. Or choose Ford's Mileage Maker Six, the most powerful Six in the low-price field.

There's magic in Ford's price tag, too! You won't believe this big new Ford is still priced Ford-low. But it is. Come in and test its magic. It's a real "Wizard of Ah-h-h-h's!"

Action Test the New Kind of FORD

OSCAR MAPLES, INC.