

**OPEN
MON.-FRI.
TILL
9:00**

THANK YOU TORRANCE

We at the HOLLYPARK NATIONAL PAINT STORES thank you for the wonderful turnout at our Grand Opening and we now look forward to servicing all your paint needs for the years to come. We've had so many requests that we are repeating a few of the specials that we ran on our opening.

**OPEN
SUNDAY
9:00-2:00**

Take advantage of these prices to "freshen up" for X-mas.

WINNERS OF OUR FREE DRAWING

FIRST PRIZE:
Mrs. Perry Connett, 1528 El Prado, Torrance
SECOND PRIZE:
G. A. Anderson, 3709 W. 181 St., Torrance
THIRD PRIZE:
Leo A. Carroll, 3431 W. 227 St., Torrance

OTHER WINNERS:
Mrs. Walter Holdbrook, 22417 So. Denker, Torrance;
Mrs. Emily F. Turner, 2024 Martina, Torrance; Richard A. Marion, 3641 W. 172 St., Torrance; Mrs. Betty Lyle, 14523 Purche Ave., Gardena; Mrs. Bill Stugart, 1658 W. 253 St., Harbor City; Grace F. Caselton, 1624 W. 207 St.; E. F. Polston, 1701 Crenshaw Blvd.; Mrs. J. L. Decker, 3658 238th St.; I. Coleman, 20010 Bruin Ave.; Mrs. A. J. Elliott, 1562 W. 220 St.

Specials Available at Both Stores
**IN TORRANCE
1639 CABRILLO
AT 5 POINTS
14608 S. CRENSHAW
IN GARDENA**

This is the big Repeat!



WALLPAPER
With every double roll purchased you will receive another double roll for only 1c. These are not discontinued nor damaged rolls but are from our fresh stock of 1957 wallpapers. All washable and sun-fast. Select from more than 2000 patterns. Modern, Provincial and Early American.

2 ROLLS 1c

NO CASH NEEDED!

AT HOLLYPARK NATIONAL PAINT STORES
YOUR CREDIT IS GOOD TAKE A FULL YEAR TO PAY!

**3-IN. PURE BRISTLE
BRUSH**
Value \$1.50
65c

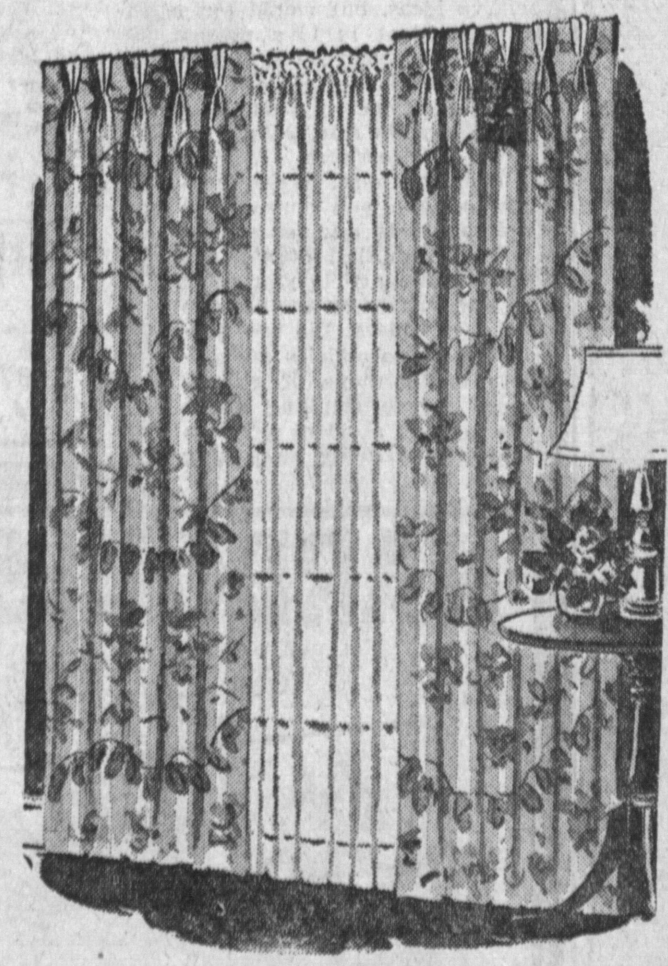
**ROLLER & TRAY
SET**
Value \$1.95
79c

**ONE COAT FLAT
WALL PAINT**
Value \$4.95
\$2.85 Gal.

**WALLPAPER
TOOL KIT**
Value \$2.25
\$1.19

**CUSTOM MADE TRAVERSE
DRAPERIES**
NO CHARGE FOR LABOR

FREE!
Buy the yardage of your choice and we will make your drapes free, 81" or longer.



Select from our tremendous stock of Antique satins, gold textured boucles, and many, many more decorator fabrics many, more of the latest designs and weaves.

from **98c** yd.

WE GIVE "S. & H." GREEN STAMPS

SORRY, STAMPS GIVEN AT OUR GARDENA STORE ONLY!

**6 QUART
PAINT PAILS**
19c

**9X10 SHEET
SANDPAPER**
Value 5c (Limit 5 Sheets to a Customer)
1c A SHEET

**ONE COAT GLOSS
ENAMEL**
Value \$6.95
\$4.15 GALLO

**RUSTIC
WOOD FINISH
FOR YOUR REDWOOD**
Value \$4.95
\$2.95 GALLO

Hollypark NATIONAL Paint Store

PAINTS — WALLPAPER — DRAPERIES

TORRANCE
1639 CABRILLO AVE.
At 5 Points DOWNTOWN TORRANCE FA. 8-0211

Open Daily 'til 6:00—Mon. & Fri. 'til 9:00
Sunday 9:00 - 2:00

14608 S. CRENSHAW BLVD.
GARDENA
DA. 3-0718

Chapel Theatre...
(Continued from Page 4)
"Washed in the Blood" and "Gimme that Old Time Religion."
Even the square dancers josh with the audience as they "promenade" down the aisle and onto the stage in the outdoor dance sequence. Glen Hoeffner, cast as the village idiot, is perhaps a little too enthusiastic at the square dance. And, perhaps, he gets a few unexpected laughs, but his actions only reflect the good time had by all the actors during the play.
Timing, which is so important to a successful production, is usually on of the most difficult things for a director to master. In "Dark of the Moon" a cast of twenty-five versatile actors keep the action moving through nine scenes like clock work. Considering the size of the stage and the number of people and scenes involved, this was no easy task. Steve Sand and Bob Cooke, cleverly designed the sets. Especially effective was the set on the mountain where the action takes place behind a thin, filmy curtain. Hence, an unreal, super natural quality.
Don Gish, who should be complimented for his ambitious and courageous undertaking, set the mood before hand with an informal introduction in mountain "talk."
Other key roles in the cast are played by Artelle Smith as the Conjure woman, and James Wilson, the God fearin', Preacher Haggler. Barring none though, the entire cast is excellent.
From an artistic and dramatic standpoint, this is one play theatre goers can't afford to miss. Remaining dates are November 30, December 1, 2, 7, 8 and 9 at the Chapel Theatre stage and the number of people...

LOOK TO 1957
Next Christmas will be your best ever if you start saving now! You won't miss the little bit you put aside each week... but how it mounts up!

JOIN OUR CHRISTMAS CLUB NOW!
SOUTH BAY BANK
ONE-HALF BLOCK SOUTH OF MARINE BLVD.
1836 SEPULVEDA FR. 6-1416 MANHATTAN BEACH FR. 9-8929
MEMBER F.D.I.C.

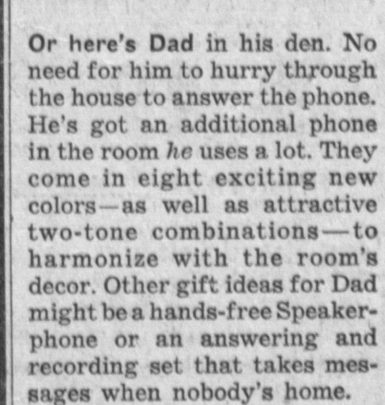
WHAT'S DOING
R. S. Pyle, your Telephone Manager in Torrance



Don't open till Christmas!
But you can sure put additional telephones—and in color, too—on your Christmas shopping list right now. They're an ideal gift and what's more, they're easy to order. Just call us and we'll deliver, fancy-wrapped and ready for the Christmas tree.



Just picture Mom here in the kitchen with a handsome ivory wall phone at her fingertips. The kitchen is a room she uses a lot so she'll appreciate a handy phone. She has beauty and convenience for \$1.00 a month after one installation charge. Mom might also like a neat spring cord in a shade that complements her color phone. Another gift idea is an illuminated dial phone that makes calling easy in the dark.



Or here's Dad in his den. No need for him to hurry through the house to answer the phone. He's got an additional phone in the room he uses a lot. They come in eight exciting new colors—as well as attractive two-tone combinations—to harmonize with the room's decor. Other gift ideas for Dad might be a hands-free Speakerphone or an answering and recording set that takes messages when nobody's home.

SHOPPING 'EARLY'
The festive holiday season is almost here again, and the traditional "shop early" warnings already are gaily emblazoned on the windows of colorfully decorated stores.
The message, we feel, also has its application as far as your telephone is concerned.
Many of you—we at Pacific Telephone know from the past—are planning joyous family reunions by telephone.
It is wise to place your calls well in advance of the "last minute" to avoid delay and possible disappointment.
And, speaking of "shopping," have you ever considered giving one of our new brightly colored telephones?
They come in green, grey, red, blue, yellow, cream, brown and beige.
Many have found that a colored telephone adds "just the touch" to an already attractive room.
PACIFIC TELEPHONE