

Maternity Care
INCLUDES ... DOCTOR AND 115⁰⁰
 Routine Post-Natal
 Routine Pre-Natal
 Routine Delivery
 Complete
 Phone: FR. 9-4033
 24 HOURS
 CORNER OF ...
 166th and Hawthorne Blvd.
 DR. BARNEY M. SQUAR, D.C.

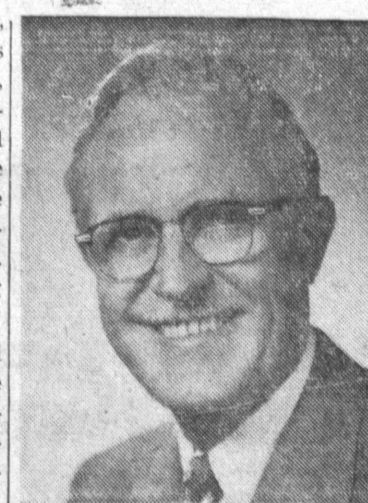
YOUR KEY to many opportunities: the Classified section of today's Torrance Press. FA. 8-2345

WATER HEATERS
 • Day and Night
 • Mission, etc.
FREE! WITH THIS AD
 Labor Installation
LEWAND PLUMBING
 FA. 8-2689

Chapel ...
 (Continued from Page 9)
 critics for the Redondo Daily Breeze.
STATE CHAMPIONS
 This year with only 3 years experience as an independent Little Theatre group, the Chapel Theater players became State

Champions at the Tournament with another Welsh dialect play.
 One of the more unique and highly technical productions to be staged in the community is being offered by the Chapel Players this month. Under the direction of Don Gish, "Dark of the Moon" will scare and delight the discriminating theatergoer. Complete with ballet, square dancing, religious rites and revivals, thunder storms, and witches, the legend of Barbara Allen will unfold. Paul Shelley from Torrance has the lead as the witch boy and Ridge Walker, Lomita, will be featured as the witch, Warloch. Don Gish just finished directing "Tea and Sympathy."
 Membership in the Chapel players has risen to 200 in the past two years and has attracted actors from Hollywood, Pasadena, Santa Monica and the local scene.

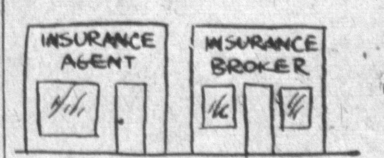
DRESS SHIRTS FINISHED 1 DAY SERVICE 23^c
PAUL'S LAUNDERETTE - 1331 El Prado Next to McCowens



SPEAKER
 Dr. Wendell L. Miller, world traveler, photographer, lecturer, and humorist, will address the Torrance high school student body in a double assembly, November 27, at 1 p.m. in the auditorium. An active clergyman for the past 30 years, Dr. Miller has served as the minister at the University church on the University of Southern California campus for 18 years. He holds three degrees from USC including a Doctorate of Divinity. He is also a member of the Phi Beta honorary society. His philosophy includes the thought that problems are more easily solved if the mental processes have been lubricated by a good laugh now and then.

INDUSTRIAL OPPORTUNITY or a litter of pups may both be advertised in Classified Ads. For the help of an experienced Want Ad writer call Torrance Press FA. 8-2345.

Now you know!
 The answers to everyday insurance problems*
 By LES KING



QUESTION: What is the difference between an insurance agent and an insurance broker?
ANSWER: Roughly, an agent is a licensed representative of a Company or Companies in a certain territory. A broker is a sort of free lance who places his business wherever he pleases but through a licensed agent.

* If you'll address your own insurance questions to this office, we'll try to give you the correct answers and there will be no charge or obligation of any kind.

TORRANCE GENERAL INSURANCE
 1407 MARCELINA FA. 8-7102

South Bay Bank Notes
 By: FRANK LETTOW
 President

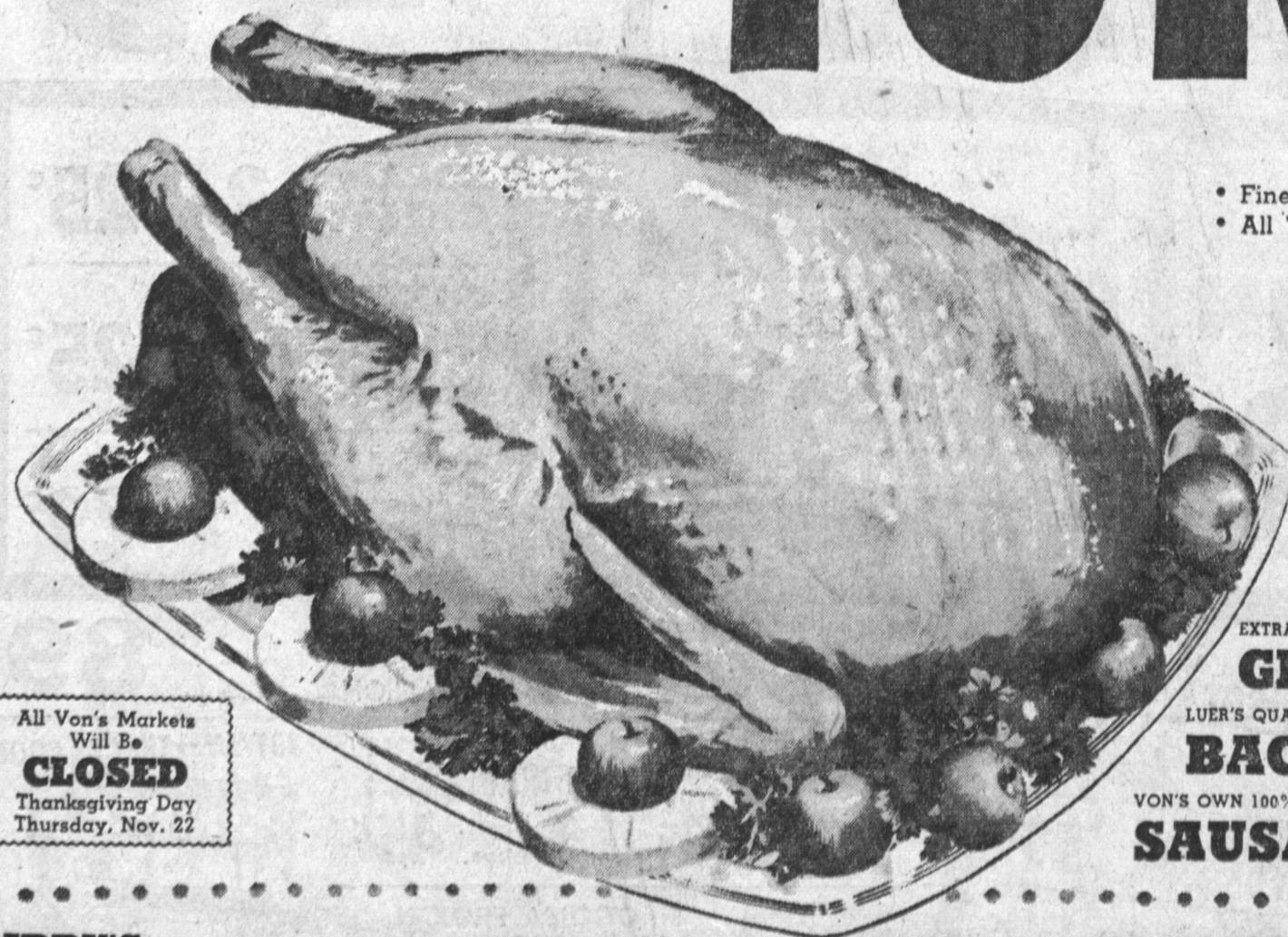
\$10,000.00 IN CASH AWARDS
 Christmas Club, a corporation, has dedicated \$10,000.00 in memorial awards in memory of Herbert F. Rawll, who 46 years ago inaugurated the Christmas Club Program. 170 different awards will be paid to Christmas Club members for a simple letter on the subject of "Why I Join The Christmas Club". Competition starts November 16, 1956 and ends January 10, 1957. The breakdown of the awards follows:
 Awards:
 1st—\$2,000.00
 2nd—\$1,500.00
 3rd—\$1,000.00
 4th—\$750.00 each
 5th—\$400.00 each
 6th—\$250.00 each
 7th—\$200.00 each

Any members of the 1957 Christmas Club at any financial institution displaying the emblem of Christmas Club is eligible to compete. The letter should be in simple form with emphasis on plain and true statements. When completed, your letter should be addressed to Christmas Club Competition, P.O. Box 1846, Grand Central Station, New York 17, New York. To be eligible for an award the following must appear at the top of the sheet on which entry is submitted:
 Your Name—Your Address
 My Christmas Club is with _____
 Located at _____
 My Account No. _____

My Account No. _____
 Folders issued by Christmas Club, a Corporation, covering competition are available at our bank.
 You are cordially invited to open your Christmas Club account at South Bay Bank. Arrangement is being made for a special service looking toward servicing our customers quickly and efficiently. Procedure relating to opening an account is extremely simple. You make your selection of the amount you want to deposit weekly, sign a card deposit your payment for the first week, or longer, if you so decide. You receive a coupon book which serves as a receipt for all payments made. Remember—interest will be included in all checks issued to members who complete their club during the year. The date when our Club opens?—Today, NOVEMBER 19, 1956. Be on hand to open yours, you will be glad you did when the 1957 Christmas season rolls around.

South Bay Bank
 1836 SEPULVEDA BLVD.
 Manhattan Beach, Calif.
 FR. 6-1416 — 9-8929
 Member Federal Deposit Insurance Corp.
FREE PARKING

VON'S TURKEYS



All Von's Markets Will Be **CLOSED** Thanksgiving Day Thursday, Nov. 22

Von's Famous "TABLE-KING" Top Quality

- Finest Quality Money Can Buy
- All Turkeys Ready for Stuffing
- Juicier and More Flavorful Meat
- A Turkey for Any Size Family

YOUNG HENS 43^c lb. 10 TO 14 LBS.
YOUNG TOMS 39^c lb. 18 TO 24 LBS.

"TABLE-KING" MIDGET TURKEYS 4 TO 7 LBS. 53^c lb.

DUCKS TABLE-KING OVEN-READY 4-5 LBS. GENUINE LONG ISLAND 49^c lb.
GEESE EXTRA FANCY OVEN-READY 6-8 LBS. 59^c lb.
BACON LUER'S QUALITY HICKORY SMOKED SLICED 1-LB. PKG. 49^c
SAUSAGE VON'S OWN 100% PORK BULK POUND 43^c 8-OZ. PKG. LINKS 23^c

Farmer John HAMS
 Full Shank Half 45^c lb.
 WHOLE HAM 47^c BUTT END 49^c CENTER SLICES 98^c

LIBBY'S PUMPKIN 2 NO. 2 1/2 CANS 25^c

CRANBERRY SAUCE
 OCEAN SPRAY—WHOLE OR STRAINED
2 16-OZ. CANS 29^c

SEEDLESS RAISINS
 FOR YOUR HOLIDAY BAKING
SUNMAID FANCY QUALITY 15-OZ. PKG. 15^c

Pictsweet Frozen Foods
MIXED VEGETABLES OR GREEN PEAS 2 10-OZ. PKGS. 27^c

JERSEYMAID Half & Half PINT CARTON 19^c
JERSEYMAID Egg Nog C. RT. CARTON 49^c
JERSEYMAID Whipping Cream HALF PINT 29^c
KRAFT MIRACLE WHIP Salad Dressing 16-OZ. JAR 29^c

Suggestions For Holiday Dessert
HEINZ FIG or PLUM PUDDING REG. CAN 47^c
JERSEYMAID FROZEN SHERBET ASSORTED FLAVORS 1 PINT CARTON 10^c

BUTTER
 JERSEYMAID FIRST QUALITY
 GRADE "A" 29^c HALF POUND CARTON
EGGS
 SUNNY VALLEY
 LARGE GRADE A FRESH 49^c DOZEN IN CARTON

Mince Meat NONE-SUCH
 CONDENSED 3-OZ. PKG. 21^c REGULAR 28-OZ. JAR 43^c
Pie Crust Mix PILLSBURY 5-OZ. PKG. 15^c

Eastern Oysters 69^c 8-OZ. TIN.
Pacific Oysters 53^c 12-OZ. JAR.

FRESH, RED, RIPE CRANBERRIES 17^c 1-LB. PKG.
 Eatmor Fancy Quality Eastern Grown Cranberries. Add Sparkling Color and Magic Flavor to Your Holiday Feast.

RED YAMS 7^c lb. GENUINE RED VELVET TOPS WITH TURKEY
NAVEL ORANGES 9^c lb. FIRST OF THE SEASON—LARGE SWEET—JUICY
ALMONDS 35^c lb. NEW CROP—FOR ALL YOUR HOLIDAY BAKING
ROMAINE 10^c lb. CRISP AND FRESH FOR TOSSED SALADS

Delicatessen Specials
CREAM CHEESE 33^c BORDEN'S FRESH 8-OZ. PKG.
MINCE MEAT 35^c VON'S AGED BRANDIED 20-OZ. CARTON

Fruit Mix 47^c FOR YOUR HOLIDAY FRUIT CAKE 1-LB. RE-USABLE PLASTIC JAR
Von's Reedsport Cheese 65^c AGED SHARP LB.
Von's Bleu Cheese Dressing 49^c 16-OZ. JAR

Van de Kamp's Bakery
 Prepared Poultry Dressing 43^c pkg. (Reg. 47c pkg.)
 Large (8-inch) PUMPKIN PIE 59^c (Reg. 63c ea.)
 Large (8-inch) MINCE PIE 59^c (Reg. 63c ea.)
 Plain or Sugared DOUGHNUTS 6 for 19^c (Reg. 6 for 25c)

CUBISON Poultry Stuffing 59^c 16-OZ. PKG.
BELL'S Poultry Stuffing 19^c 8-OZ. PKG.
SCHILLING PURE Vanilla Extract 27^c 1-OZ. BOTTLE
SCHILLING Poultry Seasoning 13^c PER PKG.
SCHILLING Rub Sage 25^c 2 1/2-OZ. PKGS.
SCHILLING Pumpkin Pie Spice 23^c PER PKG.

Kraft Cheese Spread 23^c PINEAPPLE PIMENTO-RELISH 5-OZ. JAR
Kraft Fudgies 29^c DELICIOUS AND TASTY 12-OZ. PKG.
Steero Bouillon Cubes 19^c CARTON OF 12
Vernell's Butter Mints 29^c PER PKG.
White Rock Ginger Ale 27^c NO. DEPOSIT 34-OZ. BOTTLE
White Rock Soda Water 49^c 34-OZ. BOTTLES

Sundries Values
Mennen's Foam Shave 79^c REGULAR OR MENTHOL-ICED
Williams' Lectric Shave 79^c REGULAR BOTTLE
Alkalmaz with Alka-Seltzer 58^c LARGE TUBE



VON'S FOR VALUES
 PRICES EFFECTIVE MON.-TUES.-WED. NOV. 19-20-21