

Diversification Policy Told By National Supply Co.

First consideration in the National Supply company's product diversification program will be given to the company's existing plants, at Torrance and elsewhere, A. W. McKinney, president, said here today.

Speaking before the New York Society of Security Analysts, McKinney declared the capacity and production flexibility of the company's machinery and equipment manufacturing plants "seem adequate for the foreseeable future to cope with production increases, changes in designs, and new products."

The Torrance plant manufactures drilling rigs and other oil field machinery and also handles a wide variety of jobs

on a contract basis for other west coast industries.

"In general, any new product which we might consider making in one of our plants should fit our manufacturing background and engineering experience," McKinney said. "We should be able to develop it with our existing research facilities and produce it with our existing equipment."

"On the other hand, we realize that opportunities for growth may also lie in products which do not fit the production programs of our existing plants, but which are otherwise compatible with the character of our organization. If we should become interested in such a product, involving perhaps the acquisition of another plant or company, we would certainly not close our eyes to the opportunity."

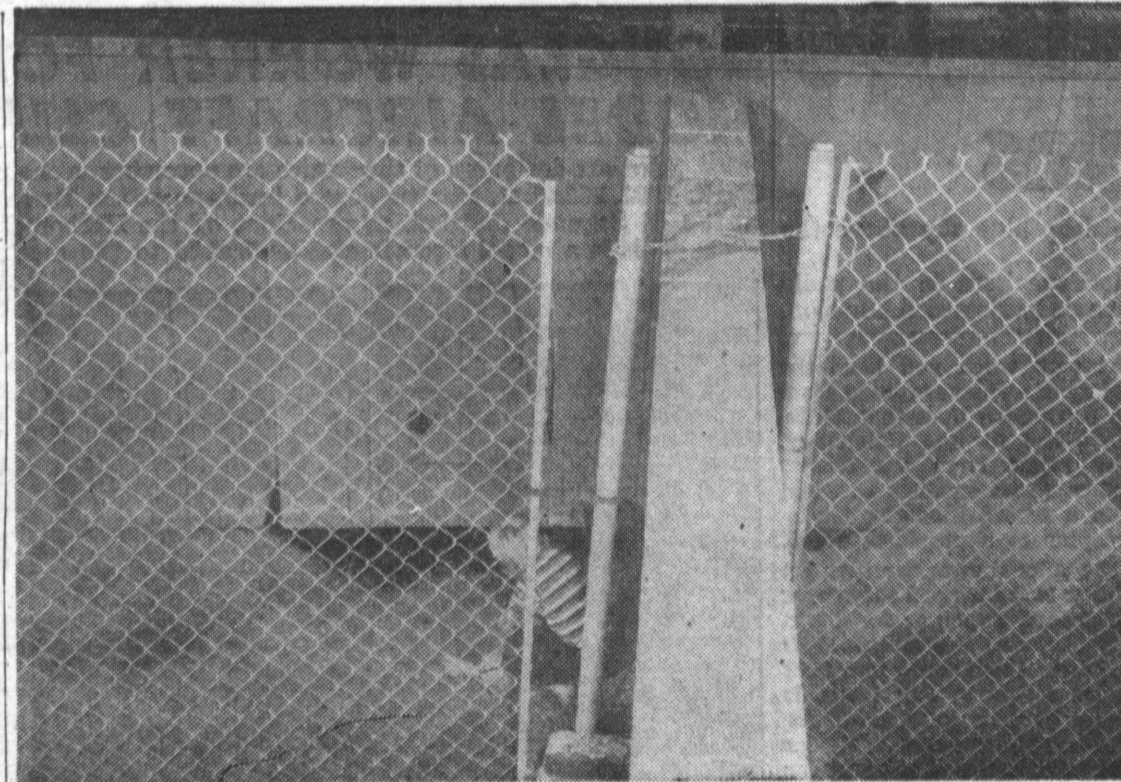
National supply makes about 75 to 80 per cent of its sales to the petroleum industry and the balance to other industrial customers.

The New York Society of Security Analysts is composed of men who analyze the stocks and bonds of various companies for potential investors.

In his presentation, McKinney told how the company's financial position has improved over the past few years. Through retained earnings, National Supply's working capital has been built up from \$44 million to \$80 million in the past ten years. Shares in the company are now held by about 10,500 stockholders.

McKinney attributed a large share of this improvement to the more intelligent use of the nation's oil and gas resources in recent years.

"By generally avoiding orgies of overproduction, the oil industry has largely been able to eliminate the violent ups and



PATIENCE WEARS THIN

Some of the residents in Victoria Terrace are beginning to get annoyed with drainage conditions. During the heavy flood the water washed away part of the embankment and undercut the fence in certain spots. Residents claim they were promised that the wooden fence would be repaired, the drain would be cemented, and the temporary wire fence removed by spring. So far no action. In the meantime the situation presents a hazard for children and residents are worried about the rainy season and what will happen. Above is at 22900 Evalyn.—Press Photo.

150 ATTEND MOOSE PICNIC

More than 150 lodge and chapter members and their families attended a Torrance Moose lodge picnic at Banning park, according to James A. Evans, lodge secretary.

downs of the past, permitting better planning and more efficient operations," he said. "We, as suppliers, have also benefited from this development."

Blood Donors Needed for Replacement

Blood donors are urgently needed at the October 15 bloodmobile to replace blood used by a ten year old boy, Wesley Williams, who is a patient at Harbor General hospital.

Discovery of the boy's plight was brought to the attention of Blood Bank Chairman, Mrs. Goron Jones by the President of Volunteers for Children, Mrs. John Stoddard whose group will go to the bank on that date to donate for the boy in order to keep him alive.

"But," said Mrs. Jones, "a few donors cannot begin to replenish the supply that this boy needs, therefore we are asking Torrance citizens to come into the auditorium on October 15 and inform the receptionist that you wish to donate your blood

Meeting To Discuss Aud Xmas Schedule

A special meeting is being called for groups who might wish to use the Torrance Civic Auditorium for Christmas activities, according to Recreation Department officials.

The meeting will be held in the refreshment room of the Civic Auditorium, 1349 El Prado, today, Thursday, October 4, 4:30 p.m.

Representatives should be able to supply the following information: The day and time wanted; the type of program desired; the number of people expected to attend; any special service requested of the city.

The bloodmobile hours are from 3 p.m. to 7:30 p.m. and the Civic auditorium is located at the corner of El Prado and Cravens avenues.

TORRANCE BEHIND IN DRIVE

Harbor City-Lomita is setting the pace for total volunteer organization in the forthcoming Community Chest campaign, leading the Harbor area cities with 74.50 per cent.

Palos Verdes, a close contender, has 71.50 per cent. Rolling Hills, in third place, has 55.11 per cent; Gardena, fourth, 29.62 per cent; San Pedro, fifth, 28.57 per cent; Wilmington, 20.52 per cent, and Torrance, 15.05 per cent.

The Ira Kaye trophy, awarded for the first Harbor area community to obtain 100 per cent volunteer organization, currently remains in the temporary

possession of Harbor City-Lomita.

The trophy will be given to the first city which completes enrollment of section chairmen and residential workers for the November 8 house to house campaign.

Sure, I'm O. Howie Hustle the Classified Ad! Whatever you have to buy or sell, I'm your personal representative. When it comes to increasing your cash, I'm a bull and a bear. Dial FA. 8-2345 and place your order for fast rising profits. dial FA. 8-2345.

YOUR BEST VALUE IN . . .

REDWOOD FENCING

FENCE SPECIALS

OCTAGON or DIAMOND DESIGN

REDWOOD FENCING

6 FOOT HIGH . . . \$1.35 ft.

5 FOOT SOLID BOARD REDWOOD \$1.10 running ft.

CHOICE OF SEVERAL DESIGNS

CLEAR REDWOOD BOARDS • PRE-CUT OTHER SIZES AT COMPARABLE PRICES

FENCE INSTALLED—40c PER RUNNING FOOT OR—DO IT YOURSELF

POSTS SET IN CONCRETE—20c PER RUNNING FOOT

D. N. LEGG MILL AND LUMBER CO.
14119 S. WESTERN AVE. DA. 9-6303
300 Feet North of Rosecrans Open Every Day Incl. Sunday

BARGAIN HARVEST

at . . . ARCHIES

"Big enough to serve you"
"Small enough to know you"

Flavorful Meats

FRESH DRESSED PAN READY	CHOICE GRADE Guaranteed Tender
FRYING Chickens 39¢ lb	RIB STEAKS 57¢ lb
ALL LEAN MEAT	
BONELESS BEEF STEW 49¢ lb	
GRADE A—All Meat, No Waste	CHOICE GRADE Perfect Serving Size
Sirloin Tip STEAKS 65¢ lb	CLUB STEAKS 65¢ lb
CHOICE	
VEAL CHOPS 59¢ lb	
ALL LEAN, FRESH	WISCONSIN RINDLESS
GROUND ROUND 35¢ lb	Monterey Jack CHEESE 41¢ lb
3 LBS. \$1.00	
CHOICE GRADE—Trimmed, Oven Ready	
CHUCK ROASTS 49¢ lb	
*GRADE A STEER—Full Cuts	BLADE CUTS
ROUND STEAK 59¢ lb	PORK CHOPS 49¢ lb

Delicious Vegetables FRUITS

Prime Sweet SEEDLESS	EXTRA FANCY FLAME TOKAY	RED IDAHO DELICIOUS
GRAPES 7¢ lb	GRAPES 9¢ lb	APPLES 9¢ lb

Nó. 1 Quality—Bake, Boil, Fry

WHITE ROSE SPUDS 29¢ 10 Lbs. 2.75

SUNKIST **LEMONS 13¢ lb** Full of Juice . . .

Solid Crisp SALINAS	VINE RIPE SOLID STEM	EXTRA FANCY SO. AMERICAN
Lettuce 9¢ ea Large Size Heads	Tomatoes 10¢ 3 Lbs. Most Delicious	Bananas 29¢ 2 Lbs.

Crispy Fresh - Locally Grown

RADISHES GREEN ONIONS CARROTS 1¢ bu.

GIANT TREND 39¢ bx

WILSON'S GOLDEN BRAND **OLEO 19¢ lb.**

ARCHIE'S MARKET
1617 CABRILLO AVE. - TORRANCE
(3 DOORS WEST OF BUS STATION)

THE EASIEST CARPET IN THE WORLD TO CLEAN

BEAUTIFUL NEW RIPPLE-TEX* BROADLOOM

CLEANS WITH CLOROX!

DEEP LUXURIOUS CARVED PILE IN 11 SOLID COLORS

*Made of Perma Color yarns—means no spots, no stains, no sunfading!

Never before broadloom like this—at any price! Almost unbelievably richer, clearer colors give a new warmth and sparkle to your rooms! Fashion's latest casual texture adds new beauty—minimize foot and furniture marks! And it's so easy to care for!

NO MONEY DOWN!

3 YEARS TO PAY!

UNIVERSAL FURNITURE COMPANY

OPEN MONDAY and FRIDAY UNTIL 9:00 P.M.

1317 SARTORI In Downtown Torrance FA. 8-3073

COLUMBIA PHONOGRAPHS

528 \$139.95

High-fidelity super-deluxe portable in Dawn Red and Ivory White washable vinyl plays 12", 10" or 7" records automatically. 4-speed changer. Famous Columbia sound system includes Ronette cartridge, two 6" extended range speakers and "Kilosphere" electrostatic tweeter. "360" K-2 Series.

LISTEN . . . the greatest sound, engineered by the greatest name in sound—Columbia! Look . . . the superb new styling of the 1957 Columbia phonographs. Stop . . . Look . . . and Listen to the exciting, new Columbia line next time you're in our neighborhood.

SOUNDS TERRIFIC

\$50 FREE! YOU WILL RECEIVE

With the purchase of this Hi-Fi Phono-Recorder

\$25 In Records —PLUS— \$25 Diamond Of Your Choice —PLUS— \$25 Needle

IF IT'S MUSICAL, SEE US

RAY'S MUSIC STORE

1312 Sartori Ave. FA 8-6247