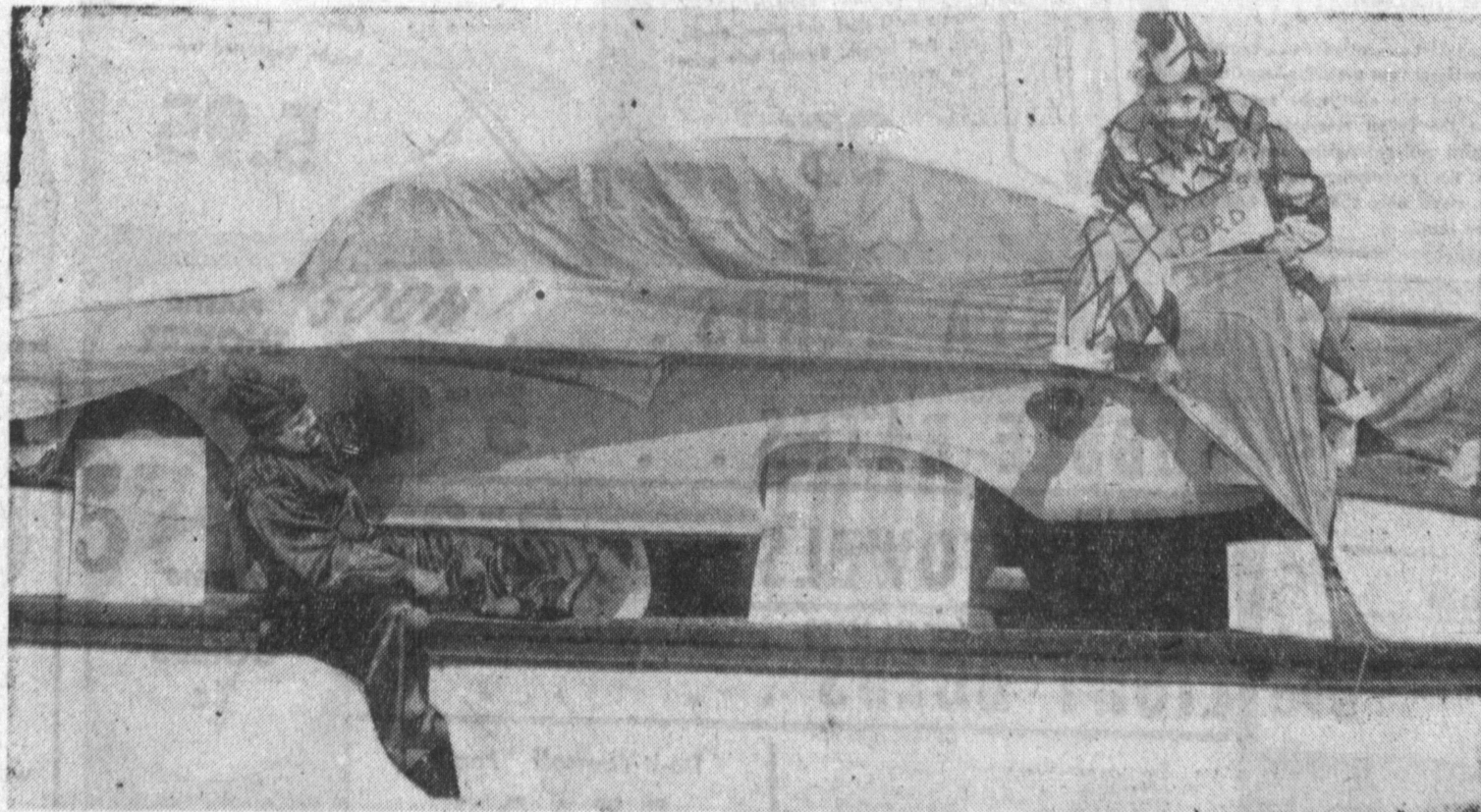


● AUTOMOBILES FOR SALE 200 ● AUTOMOBILES FOR SALE 200 ● AUTOMOBILES FOR SALE 200 ● AUTOMOBILES FOR SALE 200 ● AUTOMOBILES FOR SALE 200 ● AUTOMOBILES FOR SALE 200 ● AUTOMOBILES FOR SALE 200 ● AUTOMOBILES FOR SALE

# ONLY 7 MORE DAYS!

ALL  
1956  
FORDS  
MUST BE  
SOLD



BEFORE  
THE 1957  
NEW NEW  
FORDS!

NO OFFER  
WITHIN REASON  
REFUSED!

Watch For The New 1957 Fords  
Next Week

BUY NOW . . . . YOU'LL NEVER PAY LESS  
DEMONSTRATORS - EXECUTIVES - SURPLUS '56 MODELS

"The Place to Buy an A-1 Quality New Car Trade-In Is Behind the Wheel at Oscar Maples"  
OSCAR MAPLES A-1 GUARANTEED USED CAR INDEX!!

### BUICK:

1950 BUICK . . . . . \$599  
Special 2-door, radio & heater, hydramatic, real sharp ready to go. (100% financing) \$1.00 per day.  
WALTERIA LOT - FA. 8-8488

1951 BUICK . . . . . \$699  
Special 2-door, radio & heater, beautiful 2-tone green. Excellent condition throughout, one owner, new car trade 100% financing. \$1.20 per day.  
WALTERIA LOT - FA. 8-8488

1952 BUICK . . . . . \$799  
Super Riviera 4-door, radio & heater, automatic transmission. A beautiful one owner new car trade 100% financing. \$1.60 per day.  
WALTERIA LOT - FA. 8-8488

### CHEVROLET:

1951 CHEVROLET . . . . . \$699  
Deluxe 2-door, radio & heater original forest green. No down plan, \$1.20 per day.  
WALTERIA LOT - FA. 8-8488

1951 CHEVROLET . . . . . \$799  
Styleline Deluxe 4-door Sedan. Radio and heater, Powerglide. This is a beautiful car. 100% financing, you name your terms.  
TORRANCE LOT - FA. 8-5014

### DODGE:

1953 DODGE . . . . . \$1199  
Diplomat red ram V-8 engine, radio & heater gyro torque transmission beautiful ivory & blue finish. 100% financing. This car originally cost \$3960.  
TORRANCE LOT - FA. 8-5014

1950 DODGE . . . . . \$499  
Business coupe, original navy blue, overhauled engine, and excellent tires. Ideal for second car. Our economy special. 100% financing. \$1.00 per day.  
TORRANCE LOT - FA. 8-5014

1954 DODGE . . . . . \$1699  
Coronet Suburban Station Wagon. 13,000 actual miles. Equipped with economical overdrive. Can't tell from new.  
WALTERIA LOT - FA. 8-8488

### FORD:

1951 FORD . . . . . \$799  
V-8 Victoria, radio & heater, ford-o-matic, original ivory and black finish, excellent condition throughout, and a one owner. 100% financing.  
TORRANCE LOT - FA. 8-5014

1952 FORD . . . . . \$799  
Custom 8 2-door, radio & heater, 2-tone blue, chrome and leather, must see to appreciate. 100% financing, you name the terms.  
WALTERIA LOT - FA. 8-8488

1951 FORD . . . . . \$649  
Custom 8 2-door, radio & heater, ford-o-matic, original paint, new car trade. 100% financing.  
TORRANCE LOT - FA. 8-5014

1954 FORD . . . . . \$999  
V-8 Mainline 2-door, original factory finish, radio & heater.  
WALTERIA LOT - FA. 8-8488

1955 FORD . . . . . \$1999  
V-8 Ranch wagon, radio & heater, ford-o-matic, was sold new here one year ago.  
WALTERIA LOT - FA. 8-8488

1952 FORD . . . . . \$699  
Custom 8 2-door Ford-o-matic, radio and heater. No money down on approved credit.  
WALTERIA LOT - FA. 8-8488

1953 FORD . . . . . \$899  
V-8 Custom 2-door, radio & heater, over drive, original 2-tone green, 100% financing. \$1.50 per day.  
WALTERIA LOT - FA. 8-8488

1951 FORD . . . . . \$599  
2-door Sedan. Radio and heater. Ivory finish. No money down. \$30 a month.  
TORRANCE LOT - FA. 8-5014

1953 FORD . . . . . \$1499  
V-8 Ranch Wagon, overdrive, radio and heater. Like new throughout. Must see to appreciate.  
TORRANCE LOT - FA. 8-5014

### LINCOLN:

1951 LINCOLN . . . . . \$749  
Sport sedan, radio & heater, hydramatic, white wall tires, original navy blue, like new throughout. 100% financing. \$1.45 per day.  
WALTERIA LOT - FA. 8-8488

### MERCURY:

1956 MERCURY . . . . . \$3099  
Monterey station wagon 8-passenger, radio & heater. Merc-o-matic, 6000 actual miles, must see to appreciate, power brakes, white walls extra cost trim, cost new \$4480. 100% financing, new car warranty.  
WALTERIA LOT - FA. 8-8488

1952 MERCURY . . . . . \$899  
4-door, radio and heater. Merc-o-matic, beautiful original 2-tone green. No down plan on approved credit.  
WALTERIA LOT - FA. 8-8488

### NASH:

1952 NASH . . . . . \$799  
Rambler station wagon, radio & heater, overdrive, original factory finish, a beautiful family car. 100% financing.  
TORRANCE LOT - FA. 8-5014

1952 NASH . . . . . \$799  
Station Wagon.  
TORRANCE LOT - FA. 8-5014

1951 NASH . . . . . \$599  
Rambler convertible, radio & heater, overdrive. No down payment \$1.00 per day, if its economy you want, hurry on this one.  
TORRANCE LOT - FA. 8-5014

### PLYMOUTH:

1953 PLYMOUTH . . . . . \$999  
Belvedere hardtop, radio & heater, 2 to choose from, both like new, overdrive. 100% financing.  
TORRANCE LOT - FA. 8-5014

1950 PLYMOUTH . . . . . \$999  
Special deluxe 4-door, radio & heater, new blue paint job, excellent mechanical condition. 100% financing. \$1.00 per day.  
WALTERIA LOT - FA. 8-8488

1955 PLYMOUTH . . . . . \$1899  
Club sedan, radio & heater, automatic transmission, beautiful original red and black finish.  
WALTERIA LOT - FA. 8-8488

1949 PLYMOUTH . . . . . \$499  
Special deluxe club coupe, radio & heater, beautiful Tucson tan, 6 sharp car. No down payment, \$1.00 per day.  
TORRANCE LOT - FA. 8-5014

1952 PLYMOUTH . . . . . \$699  
4-door sedan. Factory equipped, radio and heater, new motor, new car dealer warranty.  
TORRANCE LOT - FA. 8-5014

### STUDEBAKER:

1951 STUDEBAKER . . . \$24 a Mo.  
Star lite Club Coupe, automatic transmission, radio & heater, original blue paint. No money down. Hurry on this one, a steal.  
WALTERIA LOT - FA. 8-8488

### TRUCKS:

1955 CHEVROLET . . . . . \$1399  
Deluxe pick-up loaded, low mileage, you break it in. 100% financing.  
TORRANCE LOT - FA. 8-5014

1951 DODGE . . . . . \$799  
3/4-ton pick-up, deluxe, wrap around bumper, new paint and heavy duty tires. 100% financing. \$1.50 per day.  
TORRANCE LOT - FA. 8-5014

1954 FORD . . . Full Price \$1299  
1/2-ton pick-up. Ford-o-matic. Turn indicator. Side mount, original snow white, large bumper guard. Cost new \$2410. No money down.  
TORRANCE LOT - FA. 8-5014

1952 FORD . . . . . \$899  
V-8 3/4-ton flat bed, dual wheels, heavy duty bulkhead. Excellent condition throughout, ideal for gardener, etc.  
TORRANCE LOT - FA. 8-5014

1954 FORD . . . . . \$1899  
V-8 (F-600) long wheel base stake heavy duty 2-tone job, new rubber, new motor, cost new \$5100. 100% financing. (2-speed axle).  
TORRANCE LOT - FA. 8-5014

100% FINANCING ON  
APPROVED CREDIT

TORRANCE LOCATION  
1420 Cabrillo  
FA. 8-5014

Remember Our Motto: "Service After the Sale"

# OSCAR MAPLES

"Your Friendly Ford Dealer"

100% FINANCING ON  
APPROVED CREDIT

WALTERIA LOCATION  
101 Hwy. at Hawthorne Blvd.  
FA. 8-8488