

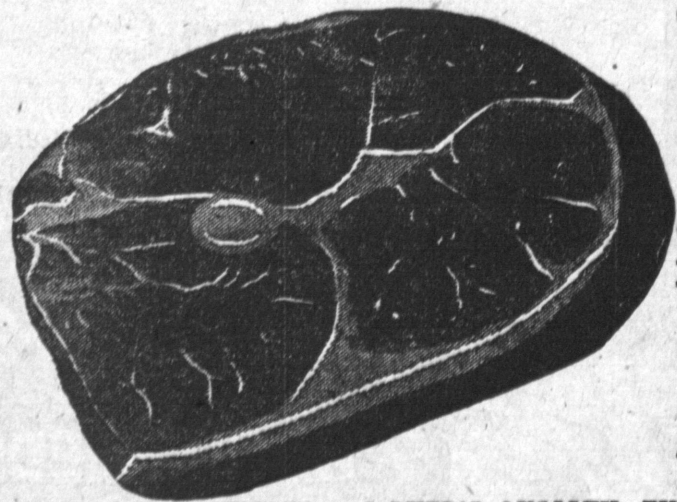
LOWEST PRICES ON FINE FOOD IN TOWN!

AT YOUR FRIENDLY



"THE KIND YOU CAN CUT WITH A FORK!"

STEAKS!



U. S. GRADED CHOICE and LUER'S QUALITY, Well Trimmed, Steer Beef

ROUND STEAK

67 [¢] _{lb}

Well Aged, Well Trimmed, Tender Juicy, U. S. Choice & Luer's Quality

RIB STEAK

79 [¢] _{lb}

U. S. GRADED CHOICE and LUER'S QUALITY, EXTRA TENDER AND EXTRA JUICY, WELL TRIMMED, MEATY GRAIN-FED STEER BEEF

CLUB STEAK

87 [¢] _{lb}

EXTRA TENDER AND EXTRA JUICY U. S. GOVT. GRADED CHOICE AND LUER'S QUALITY, WELL AGED AND WELL TRIMMED, STEER BEEF

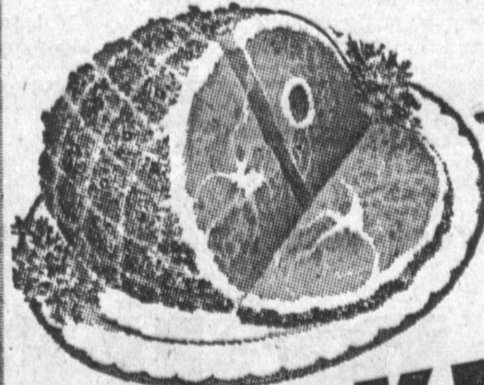
T-BONE STEAK

97 [¢] _{lb}

U. S. GRADED CHOICE AND LUER'S QUALITY, TENDER MEATY, JUICY . . . THE VERY FINEST GRAIN FED STEER BEEF

PORTERHOUSE

\$ 1 04 _{LB.}



FARMER JOHN. LEAN EASTERN
READY-TO-EAT
SHORT SHANK, CORN FED
DELICIOUSLY SWEET and EXTRA TENDER

SMOKED PICNICS

33 [¢] _{lb}

LUER'S READY-TO-EAT

BONELESS HAM

Whole or Half **89** [¢] _{lb}



LEAN Eastern Corn-Fed Cello Wrapped PACKAGE

SLICED BACON

39 [¢] _{lb}



Cut-Up, Pan-Ready YOUNG, TENDER, PLUMP The Very Best, Fresh Killed

FRYING RABBITS

49 [¢] _{lb}



FOX DELUXE, QUICK FROZEN, FULLY DRESSED READY-TO-COOK, CUT-UP

FRYING CHICKEN

1-lb. 12-oz. Pkg. **85** [¢] _{ea}

THIGHS or DRUMSTICKS _{Lb. Pkg.} **69** [¢]

LIGHT REFRESHMENT
PEPSI-COLA
BIG 12-OZ. BOTTLES
6 for 49 [¢]

GRANULATED SOAP
CITRUS
Lge. Pkg. **29** [¢] Gt. Pkg. **51** [¢]

WOODBURY
Beauty & Deodorant Soap
3 reg. size **29** [¢]

SALAD AND COOKING OIL
KRAFT'S
Pt. **35** [¢] Qt. **69** [¢]

INSTANT
IVORY FLAKES
FOR FINE WASHABLES
Lge. Pkg. **34** [¢] Gt. Pkg. **80** [¢]

PILLSBURY READY-TO-BAKE
CINNAMON ROLL
8-ounce can **25** [¢]

LIQUID DETERGENT
JOY, IN GLASS
Lge. Size **33** [¢] Gt. Size **75** [¢]

NEVER SOURS, INSTANT
PREAM
FOR YOUR COFFEE
4-ounce Jar **29** [¢]

NEW WHITE HAND SOAP
LAVA
2 medium size cakes **23** [¢]

ALL RED MEAT TUNA
PETUNA
CAT FOOD
2 No. 1/2 Cans **25** [¢]

LIQUID DETERGENT
JOY, IN TIN
12-oz. Can **39** [¢] 22-oz. Can **67** [¢]

ALL PURPOSE DETERGENT
VOGUE
Lge. Pkg. **23** [¢] Gt. Pkg. **45** [¢]

WOODBURY
Beauty & Deodorant Soap
2 bath size **29** [¢]

Clark SUPER MARKETS Farm Fresh PRODUCE

... PERFECT FOR YOUR LABOR DAY OUTING!
APPROX. AVERAGE WEIGHT, 20 LBS.!

WATERMELON
RIPE AND JUICY MIGHTY SWEET EATING!
THE VERY BEST!

39 [¢] EACH

U. S. NO. 1 SWEET SPANISH
ONIONS
3 lbs **10** [¢]

Fancy All Purpose ... Gravenstein
APPLES FOR EATING OR COOKING **3 lbs 19** [¢]

Farm-Fresh, Long Green Crisp
CUCUMBERS **4 for 9** [¢]

Clark SUPER MARKETS WINES - LIQUORS

PARK & TILFORD
KENTUCKY BRED BOURBON

KING SIZE
HALF GALLON
NOW ONLY **\$9.59**

KENTUCKY STRAIGHT BOURBON WHISKEY, 86 PROOF, PARK & TILFORD DIST. CORP., LOUISVILLE, KY.

IMPORTED FROM MILWAUKEE
BLATZ BEER
FINE, LIGHT, DRY EASTERN
— 12-OZ. CANS —
6 for \$1.08

LONDON DRY DISTILLED
GIN Full Fifth Only **\$2.89**

Butter Kernel Golden Whole Corn 303 19 [¢]	B & M—16-oz. Can BROWN BREAD 24 [¢]	Duncan Hines Spice CAKE MIX 19-oz. Pkg. 33 [¢]	Meat Tenderizer MILANI'S 4-oz. Jar 45 [¢]	All Purpose Detergent NEWS 19-oz. Pkg. 47 [¢]
Chef Boy-Ar-Dee PIZZA MIX 15 1/2 -oz. 49 [¢]	Frozen Lemonade M.C.P. 2 6-oz. cans 25 [¢]	Lunch Meat SPAM 12-oz. Can 39 [¢]	Chicken of the Sea TUNA 12-oz. Chunk 53 [¢]	Quick Elastic STARCH 2-lb. Pkg. 35 [¢]
Star-Kist White Chunk TUNA No. 1/2 Can 33 [¢]	Libby's Pink SALMON No. 1 Tall 63 [¢]	Treesweet Lemon JUICE 5 1/2-oz. Can 11 [¢]	Household Cleaner OAKITE Lge. Pkg. 37 [¢]	Deodorant Soap PROTEX 2 reg. cakes 27 [¢]
Armour's Dash Dog Food 2 1-lb. cans 31 [¢]	Dole's Frozen Pineapple JUICE 2 6-oz. cans 33 [¢]	Downyflake Frozen Waffles 2 pkgs. of 6 33 [¢]	Chicken of Sea Oyster STEW 10-oz. Can 31 [¢]	Liquid Detergent CHIFFON 12-oz. Can 39 [¢]
Household Cleanser BAB-O 2 reg. cans 25 [¢]	Household Cleanser BAB-O 2 qt. cans 35 [¢]	Sanitary Napkins MODESS Pkg. of 12 39 [¢]	Cat Food VET'S 3 1-lb. cans 25 [¢]	Purex, Beads of BLEACH Gt. Pkg. 59 [¢]

Clark SUPER MARKETS

OPEN 7 DAYS 9 to 10

Seven Friendly Markets To Save You More

LOS ANGELES WESTERN AVE. AT IMPERIAL	TORRANCE HWY 101 AT HAWTHORNE BLVD.	GARDENA VERMONT AT 140TH STREET
BELLFLOWER CLARK AT ROSE	MANHATTAN BEACH SEPULVEDA AT MARINE	COMPTON OLIVE AT WILMINGTON
GARDENA CRENSHAW AT COMPTON	AMPLE FREE PARKING . . . LIMIT RIGHTS RESERVED	