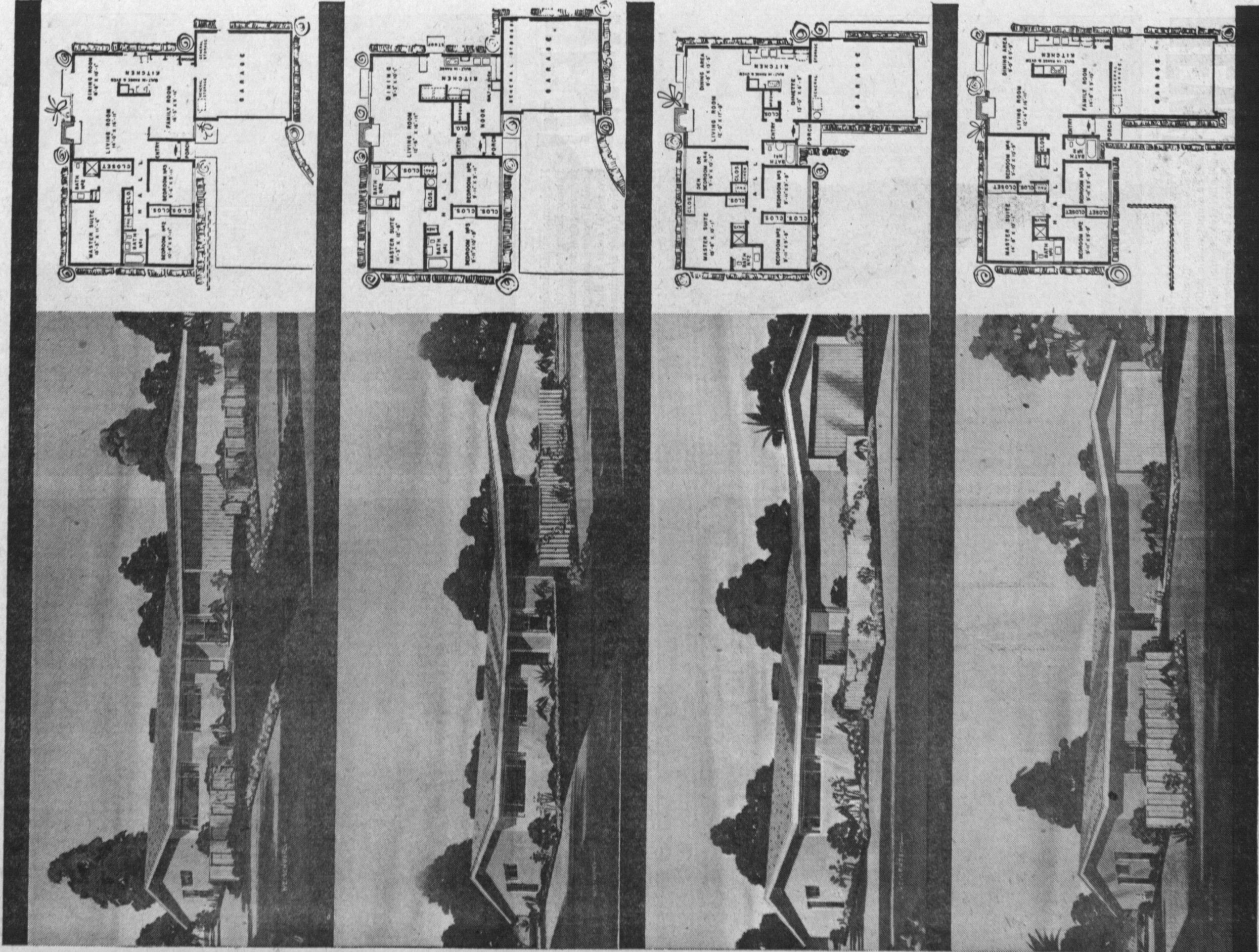
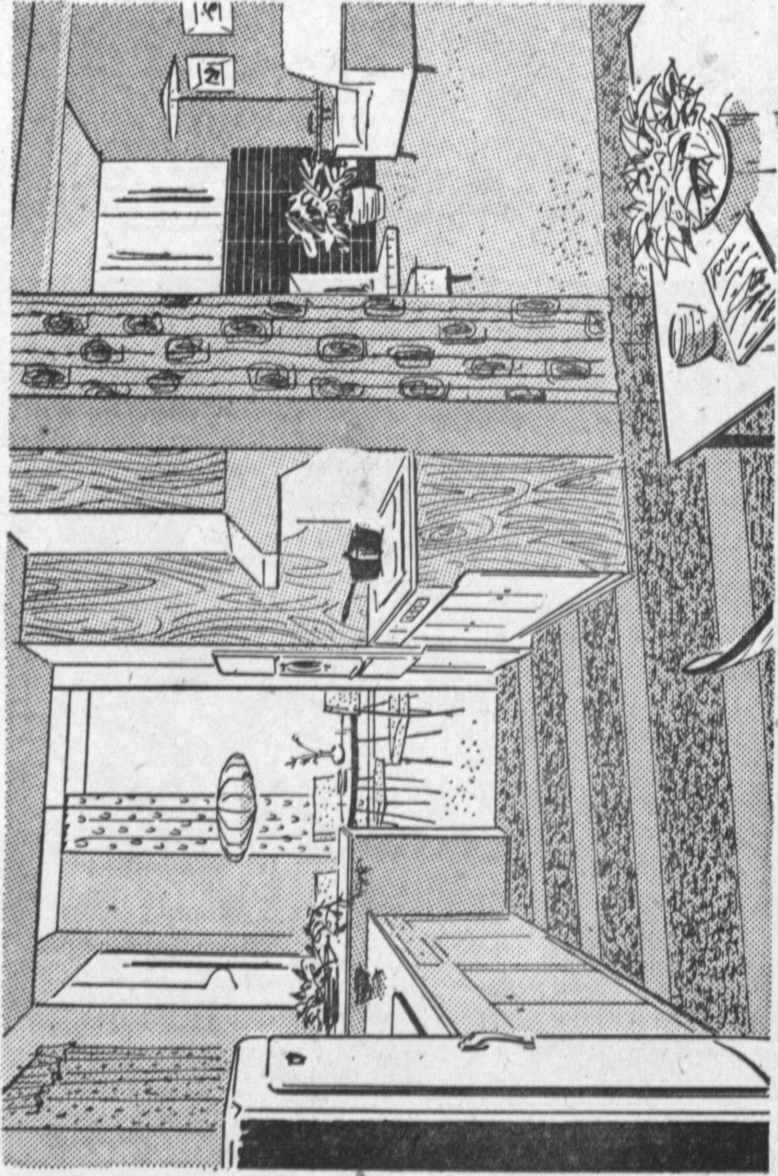


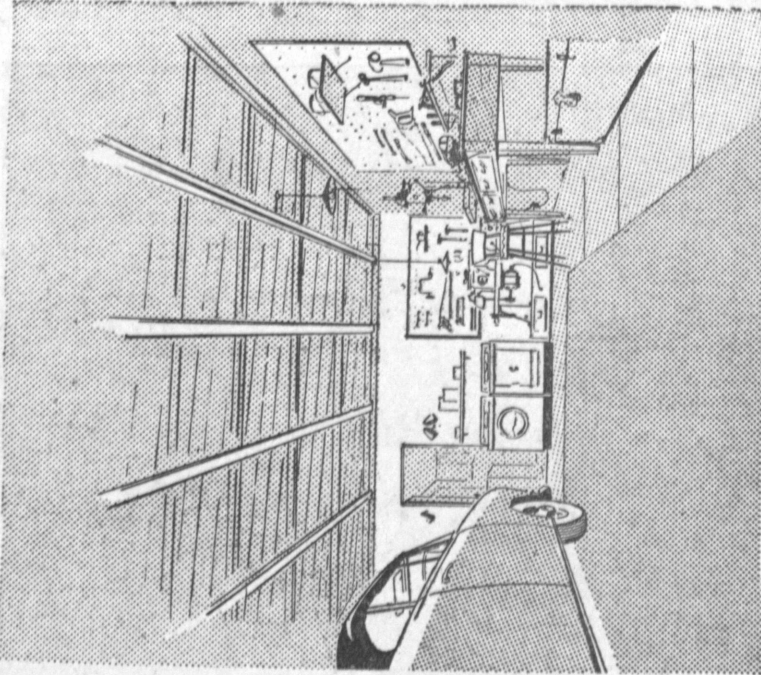
# AN EXCITING NEW SPACIOUSNESS INSIDE AND OUT — YOUR CHOICE OF 4 SUPERB "DESIGN FOR LIVING" FLOOR PLANS!



# NOW AT PARK SOUTH!

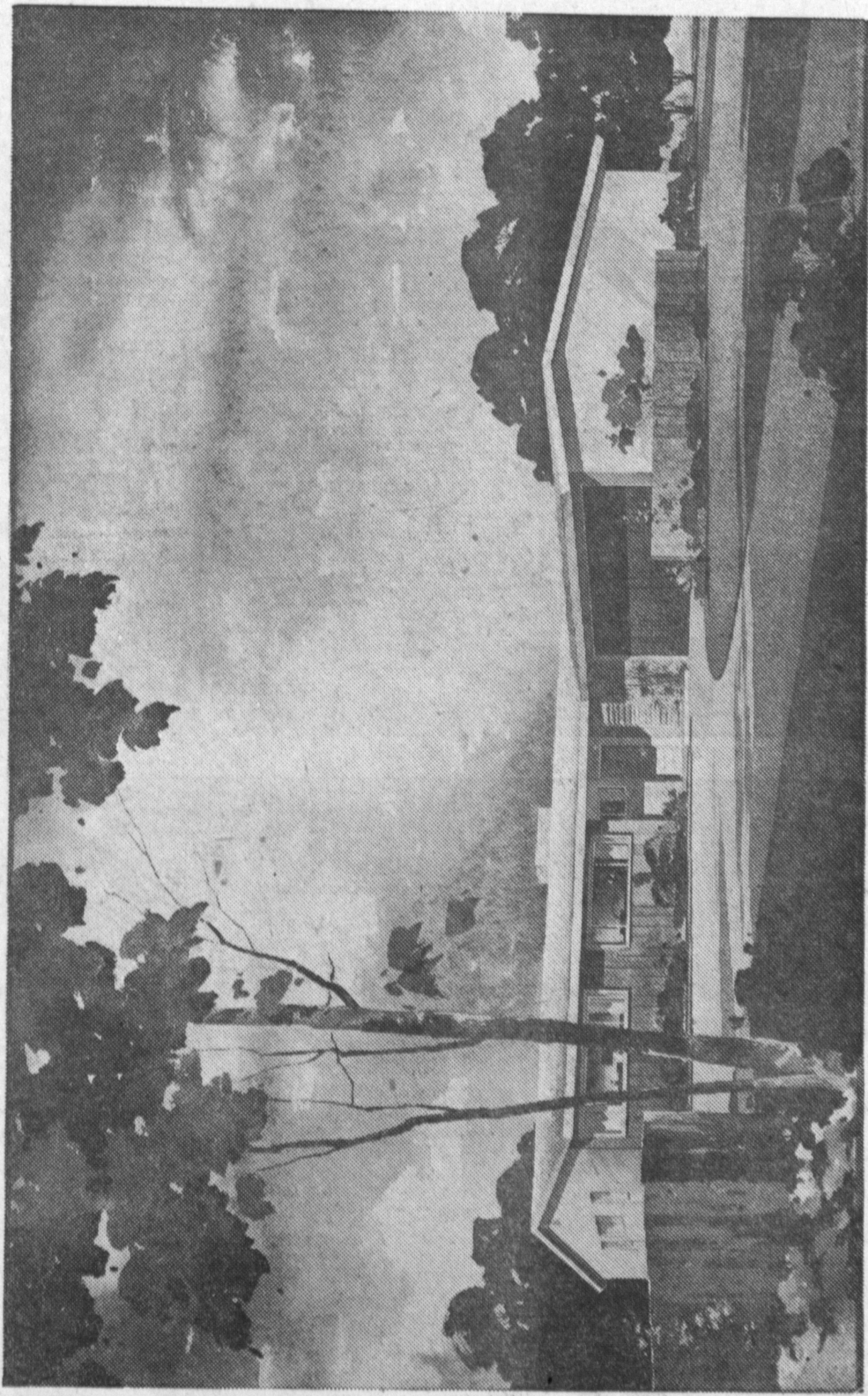


**3** It's a first! Park South's fabulous Freedom Kitchen-Family Room combination! Built-in Western Holly Range and Oven in custom pastel colors, Dyna-Vent ventilating hood, deluxe ceramic counters and wainscot at range, Dishmaster, natural flush-design Birch cabinets Waste King Pulverator, built-in serving bar. New, exclusive direct access door to garage. And, 80% more cupboard space!



**4** Oversize Double Garage with new exclusive 'Access Door' to Kitchen. Features 350 cu. ft. of storage area, ample space for all laundry facilities, 50-gallon hot-water heater, wiring and plumbing installed for your washer and dryer. Plenty of room for the do-it-yourselfer to set up shop here, too.

## An exciting NEW "FUNCTIONALISM" in exterior design!



More proof that your Park South Estate is a unique combination of the beautiful and the easy-to-live-with. Note the colorful 1 1/2" crushed-rock roofing, beautiful, distinctive, and the finest material known for reflecting the sun's heat...the graceful wide overhangs that give you more protection against rain, sun, and direct sky glare...the room-size windows in this elevation for light, airy "outdoor" living...the front, rear and side yard landscaping with ample space for trees, bushes and shrubs—the concrete walks that grace your lawns.