

ADVERTISEMENT

# Here at Home

By Maude Miller

Sun is shining, skies are balmy, robins, fat and sassy digging for worms... well, that's the way it was for a few days anyway. Long enough to give warning of lazy, hot, Southern California days soon to come. Which turned our thoughts to bathing suits... and memories of the bikini suits the gals on the Riviera were wearing last Spring. At least, Friend Husband's thoughts turned that way. He still gasps mentally when he recalls one particular specimen of feminine exposure on the beach at Monte Carlo. (That's a small town in Europe recently placed on the map by a certain wedding.) To put it briefly... this bikini was brief. Reminds us of the woman who cornered a famous judge at a swank party: "I hear that you have quite a reputation, Judge, for being able to judge a woman's character from her clothing," she cooed. "Now, what would be your verdict on my sister over there?" The Judge took a look, then gasped, "Sorry, no verdict... insufficient evidence!"

## Woman Side

We've got sufficient evidence to prove that the Catalina swim suits at Sam Levy's will make a glamor girl of you. Take, for instance, "Panella." Bright, sea blue, accented by two wide stripes of white, with molded bust, boned for perfect figure control... made of lastest that lasts and lasts. Or "Flor Adorable"... In shades of lavender and blue cotton... back shirred for fabulous fit, molded torso, for comfort in or out of water. Or "New Slant"... utterly smart in navy blue, buttons on a slant marching down the front, white inset accenting the top... the "Lady" look in swim wear. Or "Short N Sweet"... a personal favorite. White background of fine pique, with tiny gay flowers, pockets, the famous "boy" leg with modest under pant. All our Catalina suits are boned, fitted, dress-maker designed and finished. Come take your pick while the pickings are still good!

## Man Side

Came over to Man Side, and stopped in astonishment... two big openings now gave in the long counter that previously had presented a solid barrier between the customers and the stock. "How come?" "That's Mr. L." answered Eunice. "When he works he moves." Seems the Boss has a new theory... let the people get into the shirts and see what they want. Sounds good to me... if the gals are permitted to get into the dress racks, the fellas should get equal consideration!

Here's something new that's easy to get at, especially price-wise. Something new in Men's wear... new and good. Matching sport jackets and slacks... the jackets zippered, cut for action and fully lined, and slacks of the same crease-resistant, long-wearing rayon and acetate. Colors are gray, brown and blue with a quiet shepherd plaid line.

They're handsome, rugged and cool!

## Our Side

Mark Twain once said, "Nothing needs reforming as much as other people's habits!" That's why we always hesitate to give advice... but if you haven't got the habit of shopping right here at home you're missing a lot of good things! Especially at 1311 Sartori. SAM LEVY DEPARTMENT STORE. Naturally!

## 13-Cent Tax Reduction Forecast

A tax reduction of nearly 13 cent by Supervisor Burton W. Chace for the Los Angeles County taxpayers was forecast Tuesday. Chace placed his forecast on

the County's 1956-57 preliminary budget which was presented to the Supervisors by County Manager Arthur J. Will. The budget submitted by Will calls for a total requirement of \$478,669,345 for County Government and Special Districts under the jurisdiction of the board for the fiscal year of 1956-57. Chace said that this figure as compared to the 1955-56 budget of \$457,681,841 represents an increase of approximately 4.59 per cent.

However, because of certain economies affected in County operations and increases in revenues, the Supervisor declared he believed it would be possible to reduce the tax rate by the 12.78-cent per \$100 assessed value figure forecast by the County Manager.

ALL ACCOUNTS INSURED TO \$10,000

AMERICAN SAVINGS & LOAN ASSOCIATION

Accounts opened by the 10th earn from the 1st

OPEN YOUR ACCOUNT BY MAIL OR PHONE

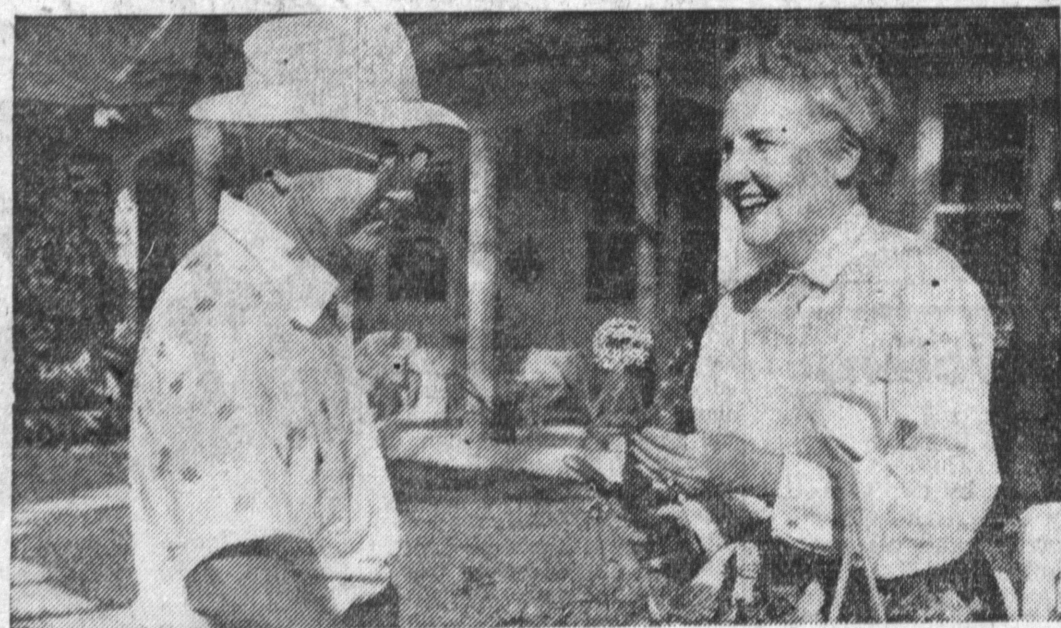
REDONDO BEACH: 205 S. Pacific Avenue, Frontier 9-5444

MANHATTAN BEACH: 1130 Manhattan Avenue, Frontier 9-8451

Other offices in Whittier, Friendly Hills, Temple City, Puente, Montrose

MEMBER FEDERAL HOME LOAN BANK

If you're saving for a comfortable future...



Where you save does make a difference

As more than 15,000,000 Americans already know, there are important advantages to putting your savings in insured Savings and Loan Associations...

Excellent returns from your money is one advantage.

Modern, efficient, forward-looking service is another.

And, of course, your money is safe because in insured Savings and Loan Associations your savings are protected by sound management and substantial reserves. They are insured up to \$10,000 by the FSLIC—an agency of the U. S. Government.

No wonder Americans are now putting more of their savings account dollars into insured Savings and Loan Associations than anywhere else!



This sign identifies us as a member of The Savings and Loan Foundation Inc., a nationwide organization of insured Savings and Loan, Building and Loan and Homestead Associations, which sponsors this message in Life, The Saturday Evening Post and U. S. News and World Report.

**SOUTHWEST SAVINGS**  
AND LOAN ASSOCIATION

Torrance: 1439 MARCELINA AVE., TORRANCE, CALIF.  
(BETWEEN CRAVENS and SARTORI)  
FAirfax 8-6111 - Main Office: Inglewood, Calif.

# NEVER BEFORE AT THIS LOW PRICE!

# 1956 CROSLEY

REG. \$189.95  
**NOW!**  
**149<sup>95</sup>**



# HURRY! NO EXTRAS

SUPPLY LIMITED FREE TABLE

PRICE INCLUDES 1 Year Guarantee Picture Tube, 90 Days Parts, 30 Days Service. FREE TABLE! FREE DELIVERY!

# CHUCK'S TV & APPL.

SALES and SERVICE  
FA. 8-4186 1409 CRAVENS, TORRANCE FA. 8-4225



ELCAMINO LIBRARY

Among the permanent structures of the beautiful campus of El Camino college is its modern, utilitarian library. With an enrollment of nearly 7000, the college faces continued growth and need for further expansion. A large segment of El Camino's enrollment comes from the Torrance area. —College Photo.

## Building Skyrockets To Meet Enrollment

"Growing in enrollment from 1100 students in 1946, El Camino college anticipates a record registration of 7500 next fall," President Forrest G. Murdock announced today.

"To keep pace with the projected enrollment, we must continue to erect new buildings," the president concluded.

Currently under construction on the campus, located at 16007 Crenshaw blvd., are new physics and chemistry buildings expected to be ready for occupancy by February 1.

Located between social science and life science buildings, the new structures will run parallel to Crenshaw. The design will be contemporary modern, to fit in with the general college architectural plan.

Included in the new physics buildings will be: Three labs, a lecture room, two dark rooms, a demonstration room and equipment room, faculty offices, and rest rooms.

Plans for the chemistry building include: Three laboratories, three lecture rooms, three preparation rooms, two balance rooms, two supply rooms, solutions room, several storage rooms, and faculty offices.

Upon completion of the two structures, El Camino's total number of permanent buildings will be raised to 13.

Landscaping is being done by Hammond Sadler, who has used representative plants and shrubs throughout the campus for use by horticulture labs. The campus already boasts the most representative display of plants and shrubs of any California campus, its landscaping plan being noted throughout all of

Southern California, Murdock said.

### New Unit

Plans are now being made to erect a new 10-classroom unit. Following this will be the construction of a portion of the men's gymnasium, the president indicated.

Most recent additions to be utilized are the campus theater, pools, health center, music building, and art center.

Included in the new physical education facility are two pools, one for instruction, one for swimming and diving.

Health services to students have been multiplied since the addition of the new center. With the new facility, nearly any type of student ailment or injury may be handled on campus, Murdock said. Offices for the nurse and doctor, as well as an emergency room, therapy room, restroom facilities, and eight examination rooms are included in the new structure.

The Little Theater, which seats 354 persons, was opened in February. It has already been used for campus assemblies, forums, lectures, musicals, and dramatic productions.

The spring musical, "Brigadoon," will be the first major musical production to be staged in the new theater. Classrooms and stage craft facilities were opened in conjunction with the theater.

### Birth

When established in 1946, the college classes were scattered in three high schools. Bungalows from military installations provided the first home for the college on its present location.

From this humble start less than 10 years ago, the campus has grown rapidly. Its faculty and administrative staff currently numbers 158. In contrast to this was the original staff of part-time instructors who divided their time between college and high school classes.

El Camino college is largely the brain-child of President Murdock, who has held his office since the founding of the two-year college. During the early part of 1946, following a series of surveys which revealed the need for an area college, Murdock and Carl G. Arf-wedson, director of business,

began working to arouse interest in the idea.

At the 1946 elections, voters agreed to the establishment of a two-year college in the district. With this, El Camino college was born.

Honors have fallen heavily on El Camino, officials reported. sportswise, its football team went to the 1954 Junior Rose Bowl game in Pasadena, and the college has gained wide recognition for its wrestling, water polo, golf, and basketball teams.

The college newspaper, the Warwhoop, has won All-American honors for the past three consecutive semesters and when last eligible for entry, was winner of the Dickson award, given annually to the outstanding junior college news publications in Southern California.

## Now you Know!

The answers to everyday insurance problems \*

By **LES KING**



QUESTION: What should I do about my auto insurance if I trade cars? Am I still covered?

ANSWER: You are still insured but you must notify your insurance company within thirty days.

\* If you'll address your own insurance questions to this office, we'll try to give you the correct answers and there will be no charge or obligation of any kind.

**TORRANCE**  
GENERAL  
INSURANCE

1407 MARCELINA FA. 8-7102

## Mayor Isen To Speak for Civic Group

Mayor Albert Isen will be guest speaker at the regular monthly meeting of the South-west Park Civic association, Tuesday, May 1, at the Carl Steele school, at 8 p.m.

Plans for the monthly Youth Activities dance will be discussed at the meeting to be held at the Carl Steele school, Friday, May 4, for teen-agers.

Further discussion of the proposed constitution will be held, and all members were urged to attend.

**HARBOR** 125 PER CAR LOAN

DRIVE-IN THEATRE

23327 SOVERMONT SEPULVEDA

Wed. - Sat., April 25-26-27-28

**Purple Mask**

CINEMASCOPE TONY CURTIS

—TECHNICOLOR— COLLEEN MILLER

**Francis in the Navy**

DONALD O'CONNOR MARTHA HYER

Sunday, Monday, Tuesday  
April 29-30, May 1

**KISS OF FIRE**

—TECHNICOLOR—

JACK PALANCE - BARBARA RUSH

**JOAN CRAWFORD**

**QUEEN BEE**

**STADIUM**

Telephone FAirfax 8-6375

NOW — ENDS SATURDAY  
ROBERT TAYLOR  
DEBRA PAGET  
STEWART GRANGER

**"THE LAST HUNT"**  
In Cinemascope and Color

—also—  
**"THE NAKED SEA"**

SUN. - MON. - TUES.  
BARBARA STANWYCK  
FRED MACMURRAY

**"THERE'S ALWAYS TOMORROW"**

—together with—  
TERRY MOORE

**"POSTMARK FOR DANGER"**

**GRAND**

FRI. - SAT. - SUN.  
JAMES STEWART in  
**"THUNDER BAY"**

In Technicolor  
plus  
ABBOTT & COSTELLO in

—in—  
**"MEET THE KEYSTONE KOPS"**

**3 DAYS ONLY**

**TORRANCE DAYS**

THURSDAY - FRIDAY - SATURDAY  
APRIL 26, 27, 28

**Bargain**

ALL OF OUR 8.95, 9.95 and 10.95 LADIES'

**DRESS SHOES \$6<sup>97</sup>**

Pinks, Powder Blues, Lavenders, Whites, Greens, Patent Leathers and Navy Blues

POPULAR VALUES TO 5.95

**DELMAR FLATS \$3<sup>97</sup>**

2 PRS. FOR \$7.00

WE CARRY JOYCE - KEDETTES - LITTLE YANKEES - CROSBY SQUARE AND MANY OTHER FAMOUS BRANDS

WE GIVE S & H GREEN STAMPS

**LeKing's Shoe Store**

1319 1/2 SARTORI AVE. DOWNTOWN TORRANCE FA. 8-2426