

**INSECT CONTROL**

An effective means of controlling insects that periodically cause losses of nearly half the nation's date crops has been announced by scientists at the Riverside campus of the University of California. Malathion dust experiments have cut losses greatly.

The giant tortoise of the Galapagos lives longer than any other animal. Its life span is about 200 years.

**GIANT TORTOISE**

The Colorado desert is located in Imperial and Riverside counties in Southern California, Lower California, and Mexico. It is 200 miles long and 50 miles wide.

The Colorado desert is located in Imperial and Riverside counties in Southern California, Lower California, and Mexico. It is 200 miles long and 50 miles wide.

**Gravel Co. Partners Tell Purposes**

Charles Shepard and Tom Block, partners in the Torrance Sand and Gravel Products company this week explained their two-fold aim: To offer high quality products in business and to be of service to the community.

The company which is located at 25701 Crenshaw boulevard represents an investment of \$1,200,000.

In the eight years of operation of the plant, Shepard and Block have become well-known as generous supporters of youth groups needing their aid.

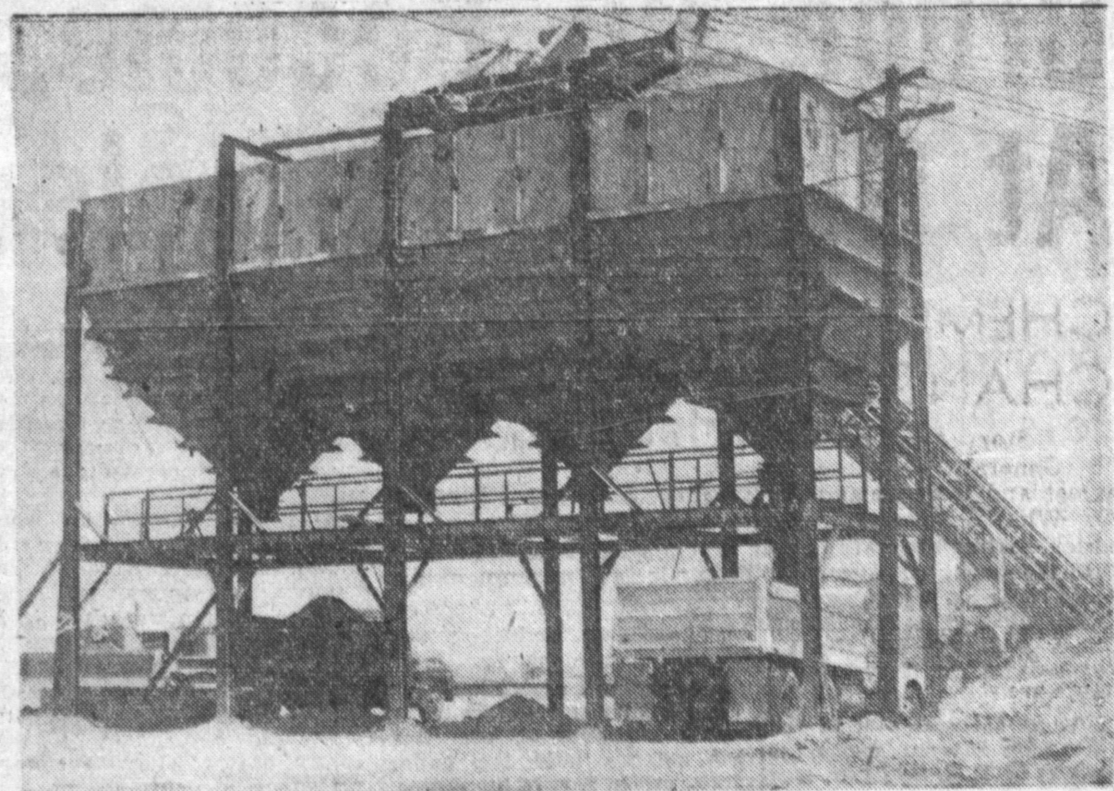
Among the many organizations which have found the two men ready to help are the Torrance Babe Ruth league, the Lomita Little league, and the Boy Scouts of America.

The Walleria Boy Scouts received five acres of land for their facilities as a gift from the partners.

Shepard is the present secretary of the Exchange club and Block is past-president.

The Torrance Sand and Gravel operation has a payroll of approximately \$2000 per day. The plant covers a 140-acre area.

The partnership extends their



**FILL 'ER UP**

Trucks are constantly being serviced at this giant loading ramp at the Torrance Sand and Gravel firm's operation located south of Pacific Coast highway off Rolling Hills road.

operations into Southern California and Utah. They are engaged in mining and processing pyrophyllite. Their plant in Chula Vista was a pioneer in pyrophyllite processing. They operate a feldspar mine and mill in Campo, California.

At present, they are engaged in opening a sand and gravel deposit similar to the Torrance operation in Corona, California.

The partners are major stockholders in two uranium mines in the famous Colorado plateau region near Blanding, Utah.

They have expended over \$100,000 in drilling and engineering in the plateau area developing the Wonder Mountain mine.

They expect to begin shipping from this property within the month, they said.

**GEORGE NURSERY**

HOME OF EXOTIC TROPICAL PLANTS

COMPLETE LANDSCAPE SERVICE

GARDEN EQUIPMENT INSECTICIDES and FERTILIZER

NURSERY STOCKS Wholesale Retail

SHADE TREES - PALM TREES

- PATIOS - RUSTIC FENCES
- FISH PONDS
- GARDEN WALKS & STEPS
- ROCK GARDENS, etc.
- TROPICAL PLANTS
- FRUIT TREES
- ROSES
- LARGE SHADE TREES

Terminal 4-4911

21507 S. MAIN ST.

OPEN 7 DAYS A WEEK

TORRANCE

**In Torrance... progress is a continuing habit**

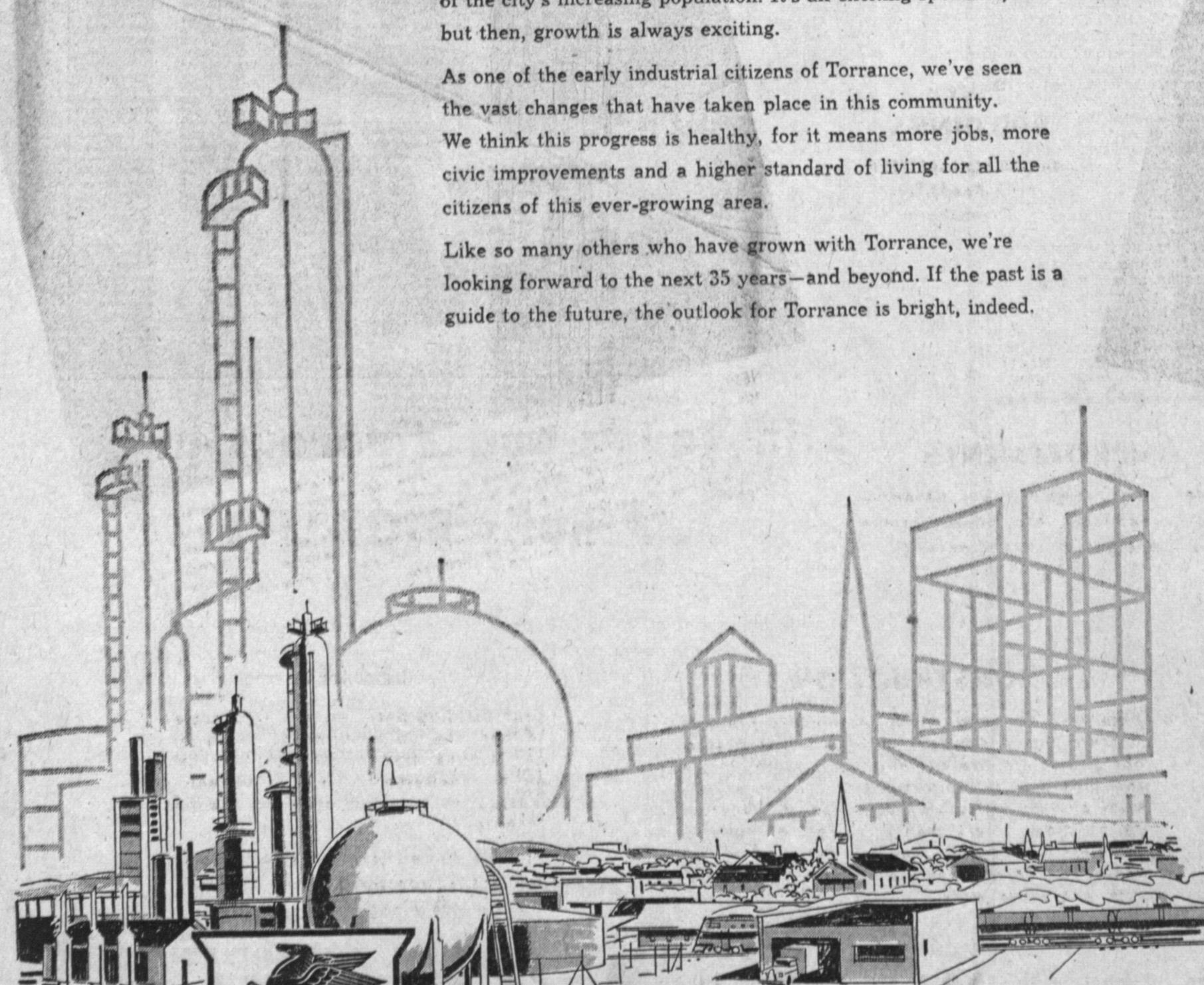
To anyone who has viewed the dramatic emergence of this community during the past 35 years from a small hamlet to a thriving, vigorous city of 75,000 people, one fact becomes unmistakably clear...

**In Torrance, progress has become a habit—a continuing habit!**

Every year, new people come to Torrance to live and work and raise their families... new business and industry open their doors... new schools and churches are built to serve the needs of the city's increasing population. It's an exciting spectacle, but then, growth is always exciting.

As one of the early industrial citizens of Torrance, we've seen the vast changes that have taken place in this community. We think this progress is healthy, for it means more jobs, more civic improvements and a higher standard of living for all the citizens of this ever-growing area.

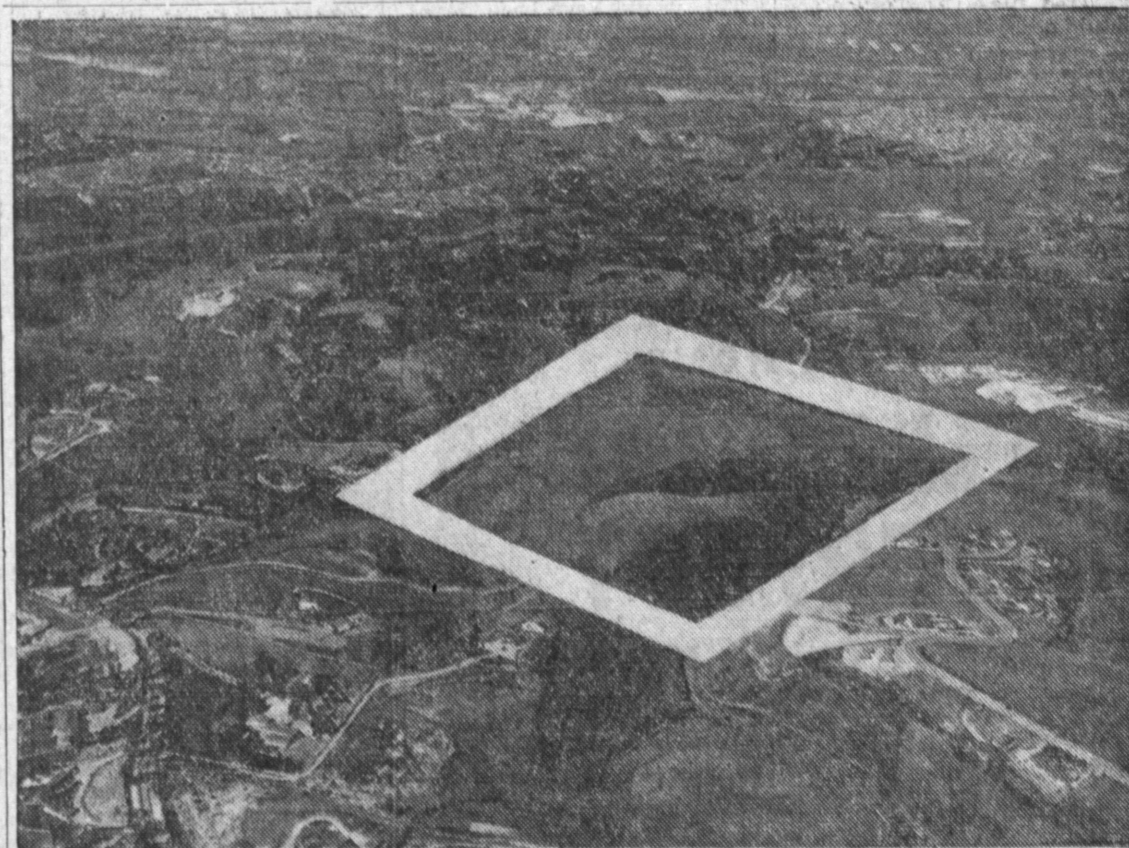
Like so many others who have grown with Torrance, we're looking forward to the next 35 years—and beyond. If the past is a guide to the future, the outlook for Torrance is bright, indeed.



Keep Torrance safe. Drive carefully.

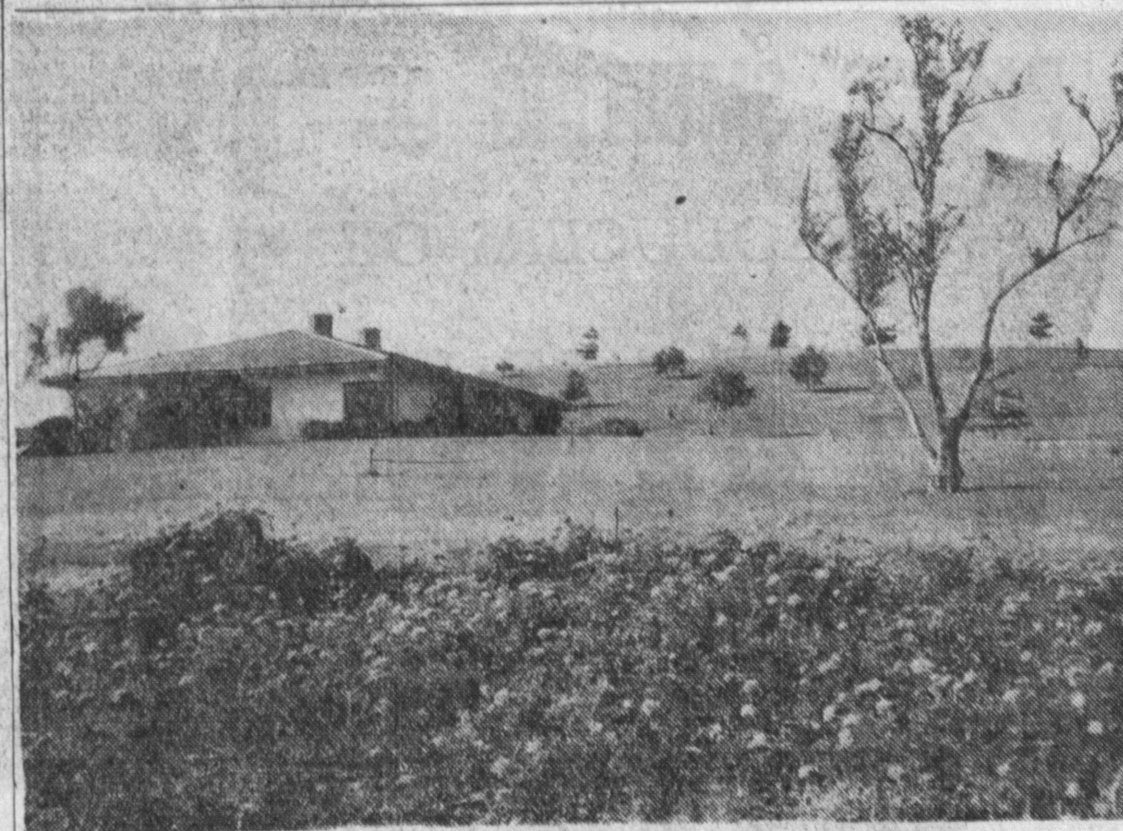


GENERAL PETROLEUM CORPORATION (A Flying Red Horse Company)



**GEORGEFF RANCHOS**

Georgeff Ranchos is outlined in the aerial photo above against the background of the north slope of Rolling Hills. One to five-acre parcels with all utilities and streets included will soon be for sale in the Georgeff Ranchos, it was announced by Don E. Williams, agent, TE. 2-1171. Elevation from 900 to 1200 feet will provide a smog-free country atmosphere. Miles of bridal trails will be maintained for the use of the residents of the community. Gate houses with attendants will restrict traffic to authorized persons.



**GREEN HILLS MEMORIAL PARK**

Located among the serene rolling hills just south of Torrance is the Green Hills Memorial Park, at Western ave. and Palos Verdes Drive North. The cemetery also contains a mausoleum.—Press Photo.

We salute Torrance on another outstanding year of progress. We are proud to have progressed with the city and hope we may continue to merit the fine response we have received from our good neighbors in this area. FR. 4-8964.

YOUR BUICK DEALER

**BUTLER BUICK**

New Location

2084 TORRANCE BLVD.

(Corner Cravens)