

Felker and Di-Met Make Products That 'Sparkle'

Most people visualize diamonds as gemstones, desirable because of their intrinsic value and as a token of sentiment. But diamonds play an increasingly important part in industry today.

Diamonds are the world's hardest abrasive medium, untouched by all other materials, natural or synthetic. This outstanding quality has been utilized to build two new industries in Torrance.

The first is Felker Manufacturing Co. Originated in 1924,

this concern has grown to world-wide importance through development of an entire series of original products, each utilizing some special quality of the diamond.

Products range from a wide variety of diamond abrasive wheels to a complete line of specialized cut-off machinery. The diamond wheels cut all types of products normally too hard for ordinary commercial abrasive wheels. The machines are built for individual applica-

tions and employ diamond wheels for their operation.

Operations

Such important operations as the cutting and laying of tile in homes is expedited by cut-off wheels produced in this successful Torrance enterprise.

Radio broadcast stations can be found at the same spot on the radio dial because Felker Diamond Wheels help produce the important but tiny quartz crystal frequency stabilizer.

No important highway or airport is built now without cutting the concrete slab into segments. This thin expansion control joint prevents erratic cracking and ultimate depreciation of the smooth surfaces.

Sidewalks, curbs, traffic in-

stallations, pipelines and hundreds of other installations and repairs are now made easier, faster with less inconvenience and better appearance because of Felker Diamond Wheels and machinery, company officials said.

Di-Met Corp

From ceramics to tungsten carbides, from cutting tools to concrete, additional uses are being found for diamonds almost daily. The Di-Met corporation is only two years old, and their product is being used in all types of manufacturing plants throughout the U. S. officials stated.

Di-Met corporation utilized diamond particles formerly considered too small and fine for

practical value. Research has proved them ideal as a polishing medium.

Their super-sharp edges cut hard materials at speeds never before attained, officials reported. Polishes produced were brilliant and unexcelled for speed and smoothness.

By devising accurate methods of segregating diamond particle sizes and mixing with carrying compounds having the desirable properties, Di-Met corporation has created a unique lapping compound.

FASTEST ANIMAL

The cheetah is the fastest 4-legged animal. It can run more than 70 miles an hour.

Thursday, April 26, 1956

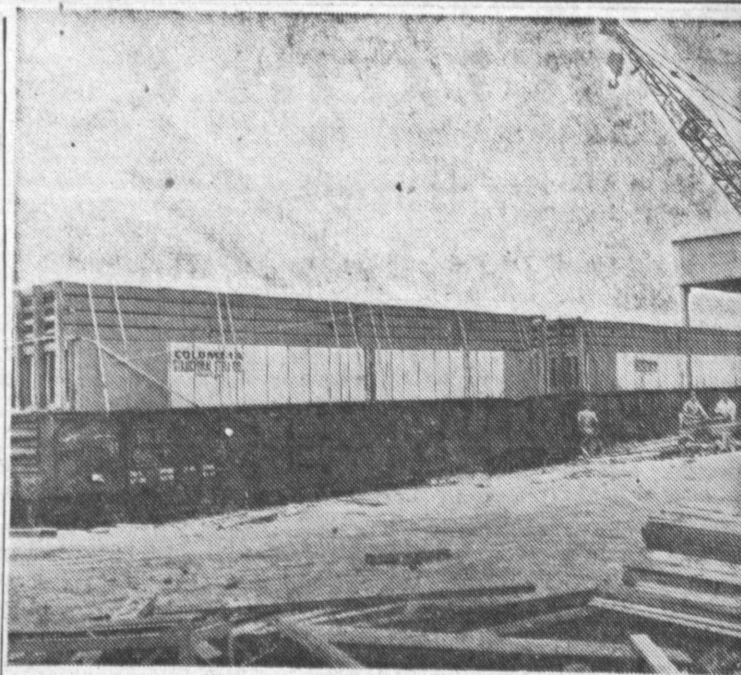
TORRANCE PRESS Page 5

LARKIN PAPERS

New vistas into the history of Mexican California are now made available to scholars and public through publication of the latest volume of "The Larkin Papers" by the University of California press.

OYSTER'S PEARL

When a foreign substance comes between the oyster's body and its shell the same substance with which it lines its shell covers the foreign particle and forms a valuable pearl.



NATIONAL DEFENSE PROJECT

Columbia Structural Steel Co. recently shipped 25 carloads of hangar doors to Alaska as part of the distant early warning (DEW) radar network national defense project. The doors were made available within 45 days.

Firm Makes Portable Classrooms

Columbia Structural Steel, who developed portable school classrooms almost on a national scale in the last five years, is the only company which meets the rigid specifications of the State of California. Walter G. Mitchell, president of the firm, stated.

The company, which located in Torrance in 1950, occupies 3 1/2 acres at 2303 Jefferson.

Its work includes the manufacture of air alert hangars for the Air Force, some of which were shipped to Alaska while others went to the East and mid-West.

The company is particularly proud of supplying 25 carloads of hangar doors within 45 days for the distant early warning (DEW) radar network in Alaska as part of the national defense project.

Principal contractor is Western Electric Co. The firm, which started with 40 employees, now totals more than 100, all of whom live in Torrance, Mitchell stated.

SCIENTISTS

University of California holds second place to Harvard university in the number of scientist memberships, according to 1933 and 1952 comparisons.

32 CASES OF RABIES IN COUNTY

A total of 32 cases of animal rabies was reported throughout Los Angeles county during March this year despite intensified efforts of enforcing the county's leash law. County Poundmaster Marvin T. Thronson reported this week to Supervisor Kenneth Hahn.

According to Thronson, 23 of the rabies cases were in unincorporated areas of the county, eight were in the city of Los Angeles, and one in Compton.

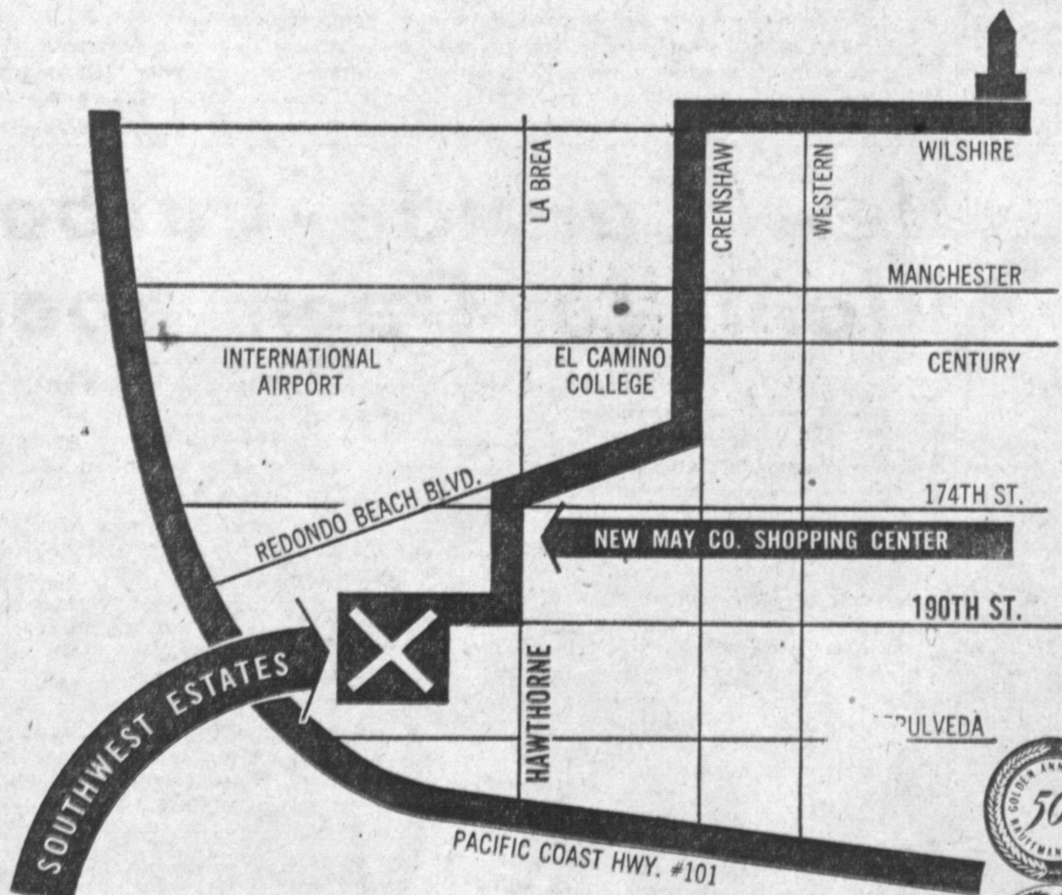
In his report to Supervisor Hahn, Thronson said that there were no cases of animal rabies in county unincorporated areas in March of 1955, but there were eleven in the city of Los Angeles in March a year ago.

During the first three months of 1956, county pound officials picked up 1,822 dogs and issued 636 citations against owners of dogs found running loose. There were 471 dogs impounded in March and 131 citations issued.

NEW MEXICO

Less than 50 years after the sailing of Columbus, according to the National Automobile club, Spanish soldiers were riding up the valleys of New Mexico, bearing European metals, ideas, language, and religion.

vets...select a spacious new home on a GIANT 175 FT LOT



BE AMONG THE FIRST to see and select a home in beautiful Southwest Estates. Top value clear through. Knock on the wall—stomp on the floor. Genuine lath and plaster...select No. 1 hardwood floors...continuous wall foundations...knotty pine kitchen cabinets...ceramic tile...Waste King disposals...everything! Giant new May Co. shopping center nearby.

VETS...LOW DOWN PAYMENT

3 bedrooms, 2 baths, 2-car garages

TERMS: \$68²⁴ PER MONTH

(incl. prin. & int.)

PRICED FROM \$13,525

Drive down Crenshaw or Western to Redondo Beach Blvd. Turn west to Hawthorne Blvd., then down Hawthorne to 190th Street. Turn right on 190th to model homes, furnished by McMahan's, Gardena. Open daily 'til 9 p.m.

190th & HAWTHORNE COMMUNITY DEVELOPERS SINCE 1906

THE WORLD'S FOURTH LARGEST HOME BUILDER

SOUTHWEST ESTATES

DIAMONDS

Africa's most precious export

—Converted to Industry's needs in TORRANCE!

From far-off Africa comes the world's most prolific supply of diamonds. Long recognized as a most valuable gemstone, diamonds now play an important part in everyday industry. Because of their inherent qualities...unmatched strength, hardness and sharpness as an abrasive medium, Felker research has utilized diamonds to develop a whole new series of industrial products. Out of these specialized applications has grown two well recognized Torrance companies. Both enjoy world-wide trade, both are contributing to the welfare and recognition of Torrance as a prominent Southern California city, and both are building profitable employment and stability within our community.



FELKER MANUFACTURING CO.

Manufacturers of Diamond Abrasive Blades and Machines since 1924

The original pioneer of diamond abrasive blades and cut-off machines, Felker Manufacturing Co. made its entree in industry with a diamond abrasive cut-off blade used primarily by lapidary shops. Experimental cutting of gemstones led to development of tile cutting blades and machines. Later, World War II gave tremendous impetus to growth since practically the entire output of this company was required by the U.S. military effort. Concentration on new products and markets commenced after VJ Day. Today, Felker Manufacturing Co. is one of the largest suppliers of Diamond Abrasive Concrete Cutting Blades and Machines in the nation...machine and diamond blade applications which were pioneered and developed in Torrance are now used on practically every major highway and airport project in the United States and Canada.

FELKER MANUFACTURING CO.

1124 Border Avenue, Torrance, California

DI-MET CORPORATION

Manufacturers of Diamond Abrasive Compounds

Throughout many manufacturing enterprises in the nation is a long-felt need for a superior polishing, lapping and finishing agent...one which will not only produce a mirror-smooth surface, but with faster speed and greater handling ease.

The birth of Di-Met Corporation provided the first West Coast source for a new compound utilizing diamond particles so small a high-powered microscope was needed in their classification and inspection. Here again, the unique cutting qualities of diamonds were seized upon...put to work on tasks never before attempted. DI-MET Diamond Compound attains a new level of precision, produces surfaces to a millionth of an inch or less, on a wide variety of products and in a manner in which no other abrasive has been able to compete! With its success assured, another new industry has been created, adding again to Torrance's welfare and recognition...at home and abroad.

DI-MET CORPORATION

1873 Mullin Avenue, Torrance, California

