

'Soul' Topic For Sermon

God as the all-knowing Mind is the central theme of the lesson-sermon in the First Church of Christ Scientist, 1750 Manuel ave., Sunday, February 19. The golden text from Proverbs (2:6) declares, "The Lord giveth wisdom: out of his mouth cometh knowledge and understanding."

Baker Eddy writes, "The history of Christianity furnishes sublime proofs of the supporting influence and protecting power bestowed on man by his heavenly Father, omnipotent Mind, who gives man faith and understanding whereby to defend himself, not only from temptation, but from bodily suffering" (p. 387).

Gala Valentine Dance Held By N.T.C.I.A.

Festivity was the keynote at the gala North Torrance Civic Improvement association dance held last Saturday night at the Eagles Lodge in Redondo Beach. Guests were personally greeted and ushered into the hall which was decorated in the gaiety of the Valentine theme.

Reeves, property custodian and master of ceremonies, introduced John Kesson, president of the NTCIA, who presented Mrs. Norma Prange, past vice-president with an honorary life membership for exceptional services rendered in the past. Ed Nobbe, vice-president, had the pleasant task of presenting an orchid of congratulations to Mrs. Prange. She was the first person to receive an honorary life membership in the NTCIA.

On the dance committee were: Mr. and Mrs. Murl Reeves, Mr. and Mrs. Ed Nobbe and Mrs. Norma Fleetwood. Scouting groups sponsored by the NTCIA and the Southwest Park Civic association members, participated in the festivities.

Steele P-TA Membership Goal Noted

Carl Steele school P-TA meeting was held recently to discuss the current membership drive. With a present membership of 282, they have set their goal at 400 members.

The meeting was opened by Mrs. Mary Crockett, president. The pledge of allegiance was led by the Boy Scouts of Troop 12.

John Dunworth is leaving the Steel school vice-principals to take over vice-principal duties at Seaside school. Bill Cleary, formerly of Seaside school, will replace Dunworth as vice-principal.

Following the business announcements of the meeting, the group was entertained by the third grade rhythm band. The Steele school orchestra gave their first public concert. Following this, the school's all-girl glee club rendered several songs.

The meeting was then adjourned and refreshments were served.

211C Scouts Set Blue and Gold Dinner

Pack 211C will hold their Blue and Gold banquet tomorrow, February 17 at 6 p.m. at St. Andrew's Episcopal church, 1432 Engracia. Dens 1, 2, 3, 4, and 5 will participate with their families.

The boys are under the guidance of Cubmaster Paul Albright. Each den is making its own table favors for the spaghetti dinner.

As a special feature, new bobcats will be welcomed. They are: William R. Redmond, Samuel D. Martin, George Lopez, Larry Ferguson and Daniel C. Patrick.

Den 3 will give the welcome to new Den 5 which has as its Den Mother, Mrs. G. Hartan. Den 4 has a new Den Mother, Mrs. William Stoltz, replacing former Den Mother, Mrs. Paul Drury.

Guests for the evening will be Reverend Hugh Percy and his family of St. Andrew's Episcopal church.

Representative Returns from Convention

Miss Vaneta Steele represented the Missionary Volunteer society of the Torrance Seventh-day Adventist church, 1610 Acacia, at the recent Southland Youth Leadership convention of Seventh-day Adventists held on Catalina Island.

Miss Steele took part in youth during the three-day convention directed by top Adventist youth leaders. Plans for 1956 youth activities at Torrance Adventist church were discussed at the meet.

A seven-point program to "revitalize the Christian experience of every church member" was announced this week by Pastor Glenn L. Goffar of Torrance Seventh-day Adventist church. The new program will be outlined from his pulpit on Saturday, February 18.

Pastor Goffar said that the program's seven points are: 1. Every church enjoying christian fellowship. 2. Every church a Bible school, every member a student. 3. Every church an evangelistic center. 4. Every community the church's responsibility. 5. Every church



KENNY FUND... Visiting a tiny patient at the Sister Kenny Memorial hospital is Mrs. Charles M. Leichtweis, a recently appointed member of the clubs and organizations committee for the Sister Kenny Foundation's fund raising campaign in Torrance.

Torrance Rebekahs Welcome District 66 President and Staff

Katherine Vash, Noble Grand of Torrance Rebekah Lodge 347, presided over the regular business meeting held at the Masonic Temple, 1321 1/2 Sartori. Dorothea Niles Martin of Santa Monica, past president of the Rebekah association of California, and guests from neighboring lodges witnessed Ethel Grause, District 66 Deputy president, and her staff display their floor work.

Irma Powers was elected to fill the office of recording secretary that had been left vacant by the resignation of Grace Herd. Mrs. Powers was installed by Mrs. Grause.

Helen Wilson was installed as Left Supporter to the Noble Grand.

It was announced that the next regular meeting will be held on Wednesday, February 22, at the Masonic Temple, 1321 1/2 Sartori. Inez Covich will be in charge of refreshments.

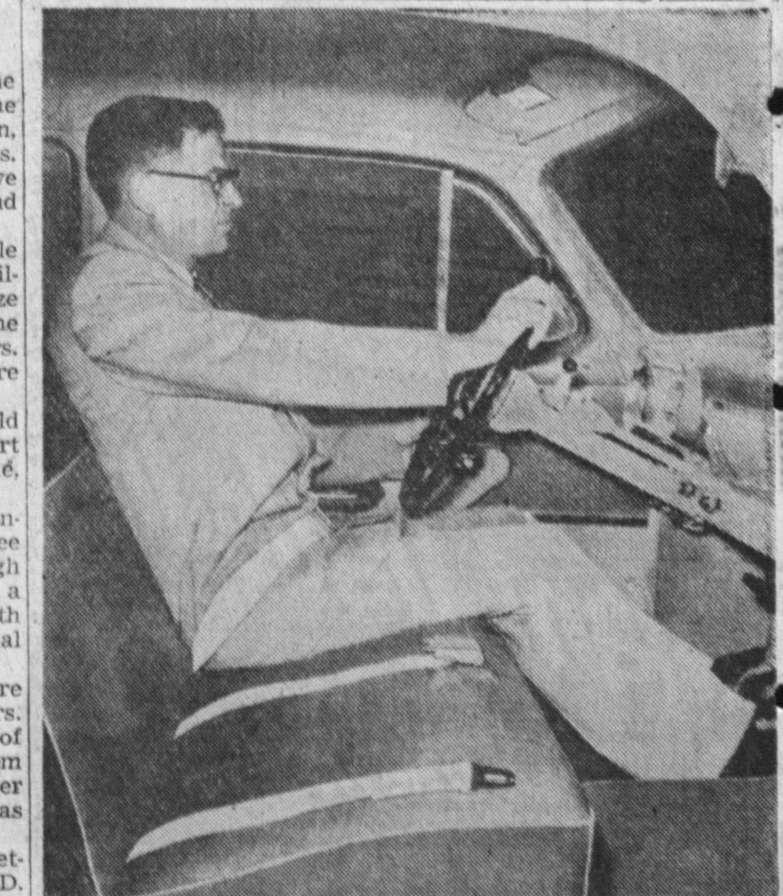
The Polio Drive was one of the clubs' projects for this year. The card party that was scheduled to obtain funds for the drive did not bring the hoped-for turn-out due to the severe rain storm which occurred on the night of the party. Not wishing to let the Drive down, the members voted to have their own private "Coin March" after each of the two meetings that were left to them during the Drive period.

From the two meetings, the club gathered forty dollars for the Polio fund. Well over one-hundred guests and members attended the recent meeting and the social hour which followed.

Lillian Blackman and her committee were in charge of refreshments. The Valentine theme was carried out in centerpieces made of tree branches sprayed red with tiny candy hearts blooming like leaves on the branches.

Plans are being made for the festive open meeting in March which will celebrate moving into the new Masonic Lodge.

Plans are being made for the faithful in its stewardship. 6. Every church with a vision of the world's needs. 7. Every church service a spiritual feast.



SAFETY-MINDED... Here's a typical installation of safety belts in one of the National Supply Company's cars. The company, which is the world's largest manufacturer and distributor of oil field machinery and equipment, has ordered belts installed on the front seats of all of its field cars, many of which are used over primitive roads throughout the oil country.

TRADE-IN YOUR OLD MATTRESS and SPRINGS AS DOWN PAYMENT!

SALE! 48% Off. 510-Coil Sleep Set!

MADE TO SELL FOR \$99.50

BUY DIRECT FROM BEDDING SPECIALISTS

Nothing down, only \$5 monthly!

15 YEAR GUARANTEE

Healthier, more refreshing sleep is yours from the first night you sleep on this firm, 510-coil mattress and box springs. They're built to support your entire body during every single sleeping moment... you very likely will awake feeling better than you have in ages, if you're sleeping on a worn out mattress now. Additional facts—heavy 8 ounce cover, vertical stitched borders, ventilators, and cord handles for easy turning. Recommended for back-ache sufferers.

ADJUSTABLE STEEL BED FRAME 395
Fits full or twin beds, 6.95 value!
LIMIT 2

MAIL AND TELEPHONE ORDERS ACCEPTED

HEALTH-O-PEDIC MATTRESS CO.

FULL SIZE SET, \$9.95 WITH TRADE-IN

1877 W. Carson, Torrance - FA. 8-1712 | 520 N. Pacific Cst. Hwy., Redondo F.R. 48333

BILLIONS IN STEEL EXPANSION MEAN THOUSANDS MORE JOBS

The steel companies' multi-billion dollar expansion plans mean new plants, new equipment, new processes to keep pace with our rapidly increasing population and steadily rising living standards.

The companies plan to add 15 million tons of new steel-making capacity during the next three years.

Steel's great new growth also will create thousands of new jobs—good jobs. There will be good jobs in the steel industry itself and all the other industries—big and little—that use steel or supply the needs of the steel companies.

Steelworkers average more than \$100 a week, placing them among the top 10 per cent of American workers. In addition, steelworkers have substantial benefits such as insurance, pensions and others.

Today electric power, electronics and many branches of science are all working right with and for the steelworker. Machines do heavy work formerly done by hand. Horsepower has replaced human muscle power for most jobs.

Among the 645,000 steelworkers are men adept in almost any trade or vocation you can name. In addition to the men who operate furnaces and mills there are bricklayers, carpenters, machinists, toolmakers—more than a thousand different kinds of jobs.

The steelworker is a leader among wage earners. He stands high in his community. He has dignity. He has leisure. His job is safe and rewarding.

He works in an industry that is basic to our country's prosperity—basic to your own prosperity because...

America and Steel Must Grow Together

AMERICAN IRON AND STEEL INSTITUTE

FREE—Write the Institute for a new illustrated booklet on "Expansion in Steel", 350 Fifth Avenue, New York 1, N.Y.

This advertisement is the third of a series. Watch for No. 4—"FOR YOUR BOY—Have you thought of a Career in Steel?"—in two weeks.

COMPANY MEMBERS OF AMERICAN IRON AND STEEL INSTITUTE IN THE UNITED STATES ARE: ACME STEEL COMPANY • ALAN WOOD STEEL COMPANY • ALLEGHENY LUDLUM STEEL CORPORATION • ANCHOR DRAWN STEEL COMPANY • ARISCO STEEL CORPORATION • ATLANTIC STEEL COMPANY • THE BARCOCK & WILCOX COMPANY, TUBULAR PRODUCTS DIVISION • BARIUM STEEL CORPORATION • BETHLEHEM STEEL COMPANY • BRAEBURN STEEL COMPANY • COLUMBIA STEEL & SHAPING COMPANY • THE CLEVELAND-CLIFFS IRON COMPANY • THE GOLD METAL PRODUCTS COMPANY • COLONIAL STEEL COMPANY • THE COLORADO ALLOY STEEL CORPORATION • COLUMBIA STEEL & SHAPING COMPANY • COLUMBIA TUBE STEEL COMPANY • CONNORS STEEL DIVISION, H. K. PORTER CO., INC. • CONTINENTAL STEEL CORPORATION • COPPERWELD STEEL COMPANY • CRUCIBLE STEEL COMPANY OF AMERICA • THE CUYANGA STEEL & WIRE COMPANY • DAMASCUS TUBE COMPANY • DETROIT STEEL CORPORATION • HENRY DISSTON DIVISION, H. K. PORTER CO., INC. • EASTERN STEEL CORPORATION • ERIE FORGE & STEEL CORPORATION • A. FINKL & SONS COMPANY • FIRTH STERLING INC. • FRETZ-MOON TUBE COMPANY, INC. • GLOBE IRON COMPANY • GRANITE CITY STEEL COMPANY • STAINLESS STEEL CORPORATION • THE M. A. HANNA COMPANY • HARRISBURG STEEL CORPORATION • INLAND STEEL COMPANY • INTERLAKE IRON CORPORATION • JESSOP STEEL COMPANY • JONES & LAUGHLIN STEEL COMPANY • GRIFFIN MANUFACTURING COMPANY • THE M. A. HANNA COMPANY • HARRISBURG STEEL CORPORATION • INLAND STEEL COMPANY • INTERLAKE IRON CORPORATION • JESSOP STEEL COMPANY • JONES & LAUGHLIN STEEL COMPANY • KEYSSTONE DRAWN STEEL COMPANY • KEYSSTONE STEEL & WIRE COMPANY • KEYSSTONE STEEL COMPANY, INC. • LACLEDE STEEL COMPANY CORPORATION • JOLLYN MFG. & SUPPLY COMPANY • KAISER STEEL CORPORATION • KEYSTONE STEEL COMPANY • KEYSSTONE STEEL & WIRE COMPANY • KEYSSTONE STEEL COMPANY, INC. • LACLEDE STEEL COMPANY CORPORATION • E. J. LAVINO AND COMPANY • LONE STAR STEEL COMPANY • LUKENS STEEL COMPANY • THE MANOHING VALLEY STEEL COMPANY • CLAYTON MARK & COMPANY • MARYLAND FINE & LATHROP STEEL COMPANY • MCGLOTH STEEL CORPORATION • MOLTRUP STEEL PRODUCTS COMPANY • MYSTIC IRON WORKS • NATIONAL STANDARD COMPANY • NATIONAL STEEL CORPORATION • NEWPORT STEEL SPECIALTY WIRE COMPANY, INC. • MCGLOTH STEEL CORPORATION • MOLTRUP STEEL PRODUCTS COMPANY • MYSTIC IRON WORKS • NATIONAL STANDARD COMPANY • NATIONAL STEEL CORPORATION • NEWPORT STEEL CORPORATION • NORTHWESTERN STEEL & WIRE COMPANY • OSLEBY, NORTON AND COMPANY • PICKANDS MATHER & COMPANY • PITTSBURGH COKE & CHEMICAL COMPANY • PITTSBURGH STEEL COMPANY • PITTSBURGH CORPORATION • REPUBLIC STEEL CORPORATION • RESEARCH PARTS & ENGINEERING CORPORATION • JOHN A. ROEBLING'S SONS CORPORATION • ROTARY ELECTRIC STEEL COMPANY • SHARON STEEL CORPORATION • SHERIDAN PIPE COMPANY • SPANG CHAFFANT, DIVISION OF THE NATIONAL SUPPLY COMPANY • THE STANDARD TUBE COMPANY • SUPERIOR TUBE COMPANY • SWEETS STEEL COMPANY • TENNESSEE PRODUCTS & CHEMICAL CORPORATION • TIMKEN STEEL AND TUBE DIVISION OF THE TIMKEN ROLLER BEARING COMPANY • UNION STEEL CORPORATION • UNITED STATES STEEL CORPORATION • UNIVERSAL CYCLOPS STEEL CORPORATION • VALLEY MOUND AND IRON CORPORATION • VANADIUM-ALLOYS STEEL COMPANY • VULCAN CRUCIBLE STEEL COMPANY • WALLACE BARNES COMPANY DIVISION OF ASSOCIATED SPRING CORPORATION • WASHINGTON STEEL CORPORATION • WHEATLAND TUBE COMPANY • WHEELING STEEL CORPORATION • WOODWARD IRON COMPANY • WYCKOFF STEEL COMPANY • THE YOUNGSTOWN SHEET AND TUBE COMPANY