



FOOD GIANT

LIMIT RIGHTS RESERVED

Hawthorne
423 S. Hawthorne Blvd.

Whittier Downs Mall
11161 E. Washington

Lynwood
3831 Century Blvd.

LINE
AR
7^c

LARGE GRADE A

EGGS

FRESH TIP-TOP DOZEN

53^c

FOOD SUPPLEMENT, 14 OUNCE JAR

OVALTINE LARGE JAR **59**^c

SWIFT'S SALAD OIL, FULL QUART

JEWEL OIL QUART JAR **49**^c

FROM MAINE — SUNCO BRAND

SARDINES 3 REG. FLAT CANS **25**^c

ROSEMEAD 100% PURE

PURE HONEY 2 LB. JAR **49**^c

★ GUARANTEED MEATS ★

Food Giant Banquet Perfect Meats Are The Nicest Thing That Ever Happened To Your Budget

U. S. Govt. Graded 'Choice' and 'Good' Steer Beef

ROUND STEAKS

BEST CENTER CUTS ONLY NONE PRICED HIGHER

Here is the finest steer beef, aged to perfection for your eating enjoyment. You get delicious meat plus Food Giant's "extra-value" trim, making these fine steaks this week's outstanding meat buy.

57^c lb

Pork Loins KINGAN'S — WHOLE OR HALF

Here is the pick of Iowa's choicest corn-fed pork. And you know it's the corn feeding that makes these Eastern loins so downright delicious. Fresh loins assure you of extra flavor that just can't be duplicated in frozen meat. Hundreds to choose from—all trimmed of excess fat before weighing.

35^c lb

RUMP ROAST Food Giant's special method of cutting makes this superb roast extra special. Cut from U.S. "Choice" and "Good" steer beef, excess fat and bone are trimmed away before weighing.

57^c lb

SLICED BACON Food Giant Banquet Perfect Bacon cured from Eastern Grain-fed pork. Here is a fine hickory-smoked bacon that is streaked with plenty of lean and has a delicious flavor that won't fry away. It's sliced just a little bit thicker.

37^c lb

COUNTRY STYLE SPARE RIBS Food Giant's special cut of pork for those who like plenty of tender new meat on their spare ribs. Eastern grain-fed pork.

35^c lb

SMOKED TONGUES Patman's brand cured and smoked beef tongues. Looking for something different. Serve boiled smoked tongue.

39^c lb

LOBSTER TAILS Extra fancy genuine Cuban rock lobster. The meaty tail part only. Just boil for 15 to 17 minutes & serve with butter. 10 1/4 oz. pkg.

89^c

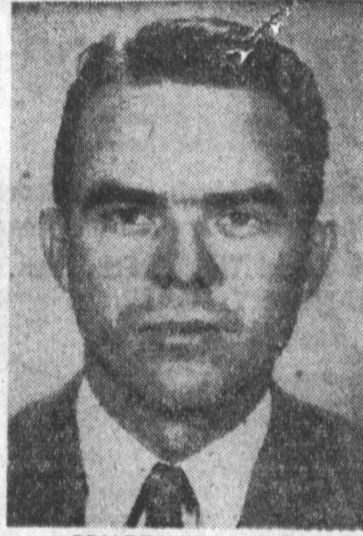
GRADE A—OVEN READY—FAMILY SIZE JUNIOR TURKEYS Spotlessly clean—ready to roast. For a perfect Sunday dinner, try these for size—Food Giant's own Banquet Perfect Junior Turkey—these chunky little birds are just loaded with tender, juicy meat. A real value, too, at Food Giant's low, low price. 4 to 8 lb. avg.

53^c lb

PORK SAUSAGE Food Giant's own blend of fresh Eastern pork and fine spices. YOU'LL LIKE THE MILD FLAVOR.

25^c lb

W. W. R. Boulevard, Hawthorne



BRUCE FRANKLIN



BOB ALLEN

Franklin, Allen Receive Local Carbide Appointment

The transfer of two additional Carbide employees to the company's new plant in Torrance was announced Thursday by T. A. Wilker, plant superintendent.

They are Bruce Franklin, former employment manager for the Texas City plant who has been named assistant to the industrial relations manager at the California plant, and Bob Allen, named purchasing agent for the new plant.

PRUDENTIAL NAMES NEW MANAGER

Appointment of Harvey L. Harms to manager of the South Bay district agency of the Prudential Insurance Co., was announced yesterday by Frederick A. Schnell, second vice-president.

Harms began his Prudential career as district agent in Bakersfield in 1948. He was promoted to staff manager in the same office one year later. In 1953 he transferred to Whittier, Calif.

He is married and has two children, Robert, 6, and Patricia, 4. The Harms family, former Whittier residents, will live here.

A native of Kansas, Harms attended schools in his home state. He served in the Pacific with the U. S. Army during World War II.

He is a member of the National Association of Life Underwriters, Eastern Los Angeles branch.

Franklin, a graduate of the University of Tennessee, joined Carbide in May, 1948, as a safety inspector. In April, 1950, he was transferred to the employment division.

He is a veteran of World War II, serving four years in the Navy. A Lt. (jg) in the naval reserve, Franklin was called up for two years active duty during the Korean conflict. He and his wife and two children, Bruce Jr., 3, and Mary, 18 months, reside at 2010 First Avenue North, Texas City.

Allen, a graduate of Notre Dame, joined Carbide at Texas City in January, 1946, as an office trainee and subsequently was transferred to the purchasing department as a buyer in October, 1948.

He is a veteran of three years in the Army during World War II when he achieved the rank of technical sergeant. Allen is a member of the Thermal Insulation society.

He and his wife reside at 2310 Clark Dr., La Marque, with their three children, Robert, Jr., 11, Thomas, 7, and Margaret, 3.

Kiwanis Sets Money For Flood Relief

At the January meeting of the board of directors of the Kiwanis club of Torrance, it was voted to donate \$75 to be used by the California-Nevada-Hawaii district of Kiwanis International, for the relief of needy victims of the December floods which have left great damage and suffering in Northern California.

The club members donated a portion of funds normally used in Christmas card exchange to a fund for the aid of needy families at Christmas time. A total of \$457.50 was gathered this year.

New Kiwanis officers were installed at a dinner and dance at the Palos Verdes country club this week.

Tuesday Basketball

High school boys' basketball now going on every Tuesday night in the Girls' gym from 7 to 9:45 p.m. The gym will be closed January 31 to enable the North high school team to use the facility for a schedule home game with Morningside.

All boys who are not playing high school basketball are eligible.

An 8-team league is now being formed. A Father and Son banquet will climax the basketball season.

Now you Know!

The answers to everyday insurance problems*

By Les King



QUESTION: Will additional living expense insurance pay for the taxes and payments on our home if it burns?

ANSWER: No, you'd want rental value insurance for that purpose but you should see a first class insurance agent before buying either.

* If you'll address your own insurance questions to this office, we'll try to give you the correct answers and there will be no charge or obligation of any kind.

TORRANCE GENERAL INSURANCE

1407 MARCELINA FA. 8-7102

NEW CAR DIRECTORY

YOUR AUTHORIZED SALES and SERVICE IN THE TORRANCE AREA

Sales FR. 9-8466 Service

TOM KING

Studebaker - Packard
350 N. Pacific Coast Hwy.
Redondo Beach

BUICK FAirfax 8-6272
IN TORRANCE BUICKS THE "BUY"

BUTLER BUICK

2084 TORRANCE BLVD., TORRANCE

TRADES LIKE MAD
TORRANCE LINCOLN MERCURY

Lincoln-Mercury Sales-Service
1885 Torrance FA. 8-3065

OLDSMOBILE - CADILLAC G.M.C. TRUCKS

CECIL L. THOMAS & SONS
Terminal 3-5291 — PACIFIC at FOURTH, SAN PEDRO

DODGE - PLYMOUTH FRontier 2-2122

SALES & SERVICE
WALTER G. LINCH

312 PACIFIC COAST HWY. - 312 S. CATALINA, Redondo Beach

STUDEBAKER ORegon 8-4005

Dealer Authorized by Studebaker Corporation to Service the Torrance Area

FRANK H. AFTON CO.

240 N. MARKET, INGLEWOOD

INGLEWOOD NASH

AUTHORIZED SALES and SERVICE

4351 W. CENTURY BLVD.

(Just East of Car Line)

OS. 7-8253 OR. 8-3186



FR. 4-8937

YOUR AUTHORIZED PONTIAC DEALER SALES & SERVICE

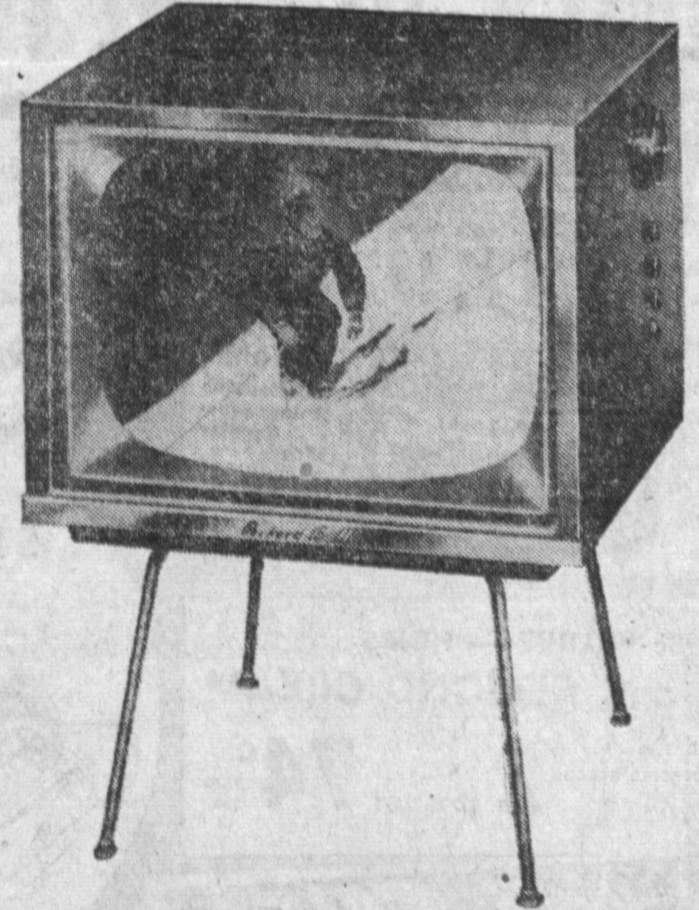
TWIN PONTIAC

505 Pacific Coast Hwy., Hermosa

DESOTO PLYMOUTH WHITTLESEY MOTORS

FACTORY AUTHORIZED SERVICE ON ALL CHRYSLER PRODUCTS

OPEN EVENINGS 1600 CABRILLO FA. 8-6161



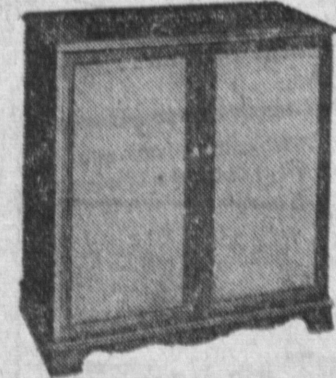
DOUBLE VALUE BUYS

Hi-Fi Combination

By Packard-Bell brings you a new high in listening pleasure. Features AM-FM radio and 3-speed automatic record player. Finest Hi-Fi component parts assembled in handsome mahogany cabinet.

\$350

Model 13RP-1



21" TABLE TV

With powerful Rangefinder V-88 chassis, has automatic focus, super-power transformer, genuine hardwood cabinet, Tru-Fi audio system, filtered removable picture lens.

\$179.95

Model 21VT-1 Walnut fin.

Packard-Bell

OPEN NITES 'TIL 9 P.M.

CHUCK'S T.V. & APPLIANCES

1409 CRAVENS AVE.

TORRANCE

FA. 8-4186