

# FOODS CO. markets

910 W. Santa Barbara at Vermont  
174th & Crenshaw Torrance

Reduce your Christmas food shopping to the minimum time . . . and minimum cost. Come to FOODS CO. and get everything you want for your Christmas dinner and holidays festivities. Every table, shelf and case is filled with fine quality foods for the feast . . . and every price is a low price. Not even Santa could bring you BIGGER VALUES than those you'll see in every department. Get your food buying chore done easily and economically. Christmas shop in one quick stop — FOODS CO. . . . everybody's Merry Feasting Store!

## "GUEST QUALITY MEATS"

# TURKEYS

WE HAVE A TURKEY FOR EVERY SIZED FAMILY!



**CUBBISON STUFFING MIX**  
For 15-lb. Turkey—  
Large Box

**59c**

Fancy Young  
OVEN-READY  
**TOMS**  
18 to 22 Lbs.  
AVERAGE WEIGHTS  
OVEN-READY  
FANCY, YOUNG  
**HEN TURKEYS**  
10 to 14 Lb.  
Avg. Wts.

**49c**

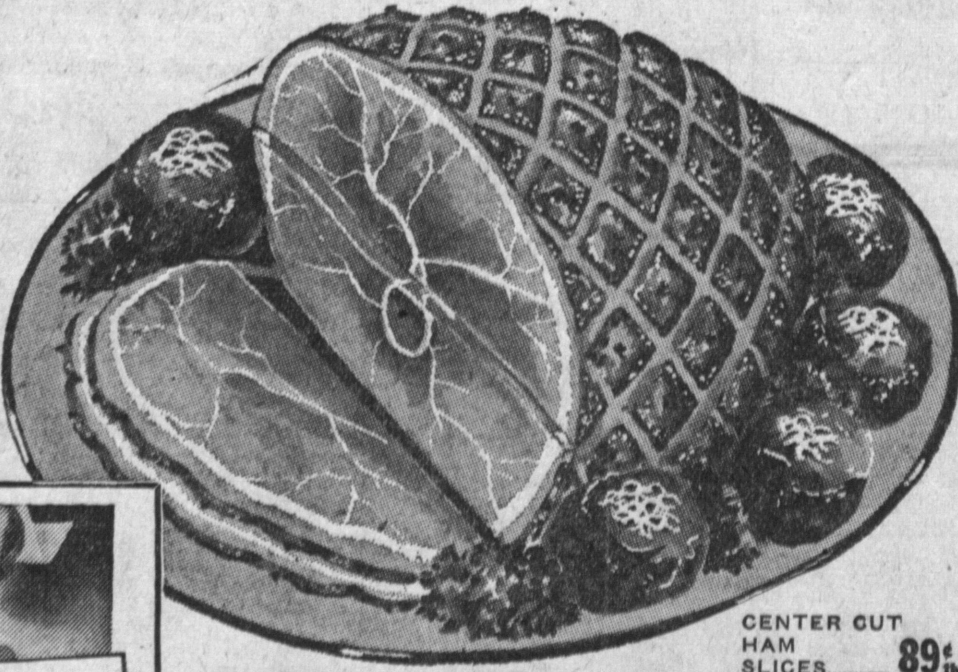
**39c** <sup>¢ lb</sup>



**MIDWEST CORNHUSKERS**  
SMOKED  
**PICNICS** **29c** <sup>¢ lb.</sup>  
6 to 8 Lb. Whts.



**RATH'S BLACK HAWK**  
SWEET SMOKED  
**BACON** **49c**  
1-LB. PACKAGE



CENTER CUT  
HAM  
SLICES **89c**

**WILSON'S, TENDER-MADE**  
or **OL' SMOKEY**  
**HAMS**  
14 TO 18 LB. AVERAGE

WHOLE  
or FULL  
SHANK  
HALF

**43c** <sup>¢ lb</sup>

**OYSTERS**  
LARGE — NORTHWEST  
12-oz. Jars  
**53c** <sup>¢ lb.</sup>

**SAUSAGE**  
PURE PORK  
Lightly Seasoned  
**39c** <sup>¢ lb.</sup>

**DUCKS**  
LONG ISLAND TYPE  
3 to 5 Lb. Whts.  
**55c** <sup>¢ lb.</sup>

**CHICKEN**  
SOFT BONE ROASTERS  
4 to 5 Lbs.  
**59c** <sup>¢ lb.</sup>

**IVORY SOAP**  
MED. BARS 3 for 25c  
LARGE BARS 2 for 29c

PERSONAL  
**IVORY SOAP**  
4 bars **22c**

**IVORY FLAKES**  
LARGE PACKAGE **30c**

**IVORY SNOW**  
LARGE PACKAGE **30c**

**CAMAY SOAP**  
REG. BARS 3 bars 25c  
BATH SIZE 2 bars 25c

**P & G TIDE**  
LARGE PACKAGE **30c**

**P & G BLUE CHEER**  
LARGE PACKAGE **30c**

**PINK DREFT**  
LARGE PACKAGE **30c**

**P & G JOY**  
12-OUNCE BOTTLE **30c**

Low Sudsing **DASH**  
24-OUNCE PACKAGE **37c**

REYNOLD'S  
**ALUMINUM WRAP**  
25-FT. ROLL **25c**

**SWANSON FRYERS**  
1-LB., 12-OZ. SIZE **\$1.32**

**Van de Kamp's 40th Anniversary SPECIALS**  
Dec. 22, 23, 24

Poultry DRESSING . . . **43c** <sup>lb. pkg.</sup>  
(Reg. 47c lb. pkg.)

Butterfly COFFEE CAKES 6 for **29c**  
(Reg. 6 for 33c) 3 for 15c

Sat., ONLY, Dec. 24

8-Inch PUMPKIN PIE **57c** <sup>ea.</sup>  
(Reg. 59c ea.)

8-Inch MINCE PIE . . . **57c** <sup>ea.</sup>  
(Reg. 59c ea.)

40 years 1915 - 1955  
**Van de Kamp's**  
BAKERIES-COFFEE SHOPS



## EARLY BIRD FIRST OF THE WEEK SPECIAL COUPONS

These Prices Effective  
Mon., Tues., Wed., Dec. 26, 27, 28

**COUPON**

FIRST OF THE WEEK SPECIALS!  
Good Mon., Tues., Wed., Dec. 26, 27, 28

M.J.B.  
**COFFEE**  
1-LB. CAN  
**69c**

LIMIT 1 WITH COUPON  
Present Coupon to Checker — Void Dec. 29

**COUPON**

FIRST OF THE WEEK SPECIALS!  
Good Mon., Tues., Wed., Dec. 26, 27, 28

FANCY, SWEET  
FULL O' JUICE  
VALENCIA  
**ORANGES**  
5 lbs. **29c**

Present Coupon to Checker — Void Dec. 29

**COUPON**

FIRST OF THE WEEK SPECIALS!  
Good Mon., Tues., Wed., Dec. 26, 27, 28

ARISTOCRAT QUALITY  
**GROUND BEEF**  
**23c** <sup>¢ lb.</sup>

Present Coupon to Checker — Void Dec. 29

SHOP THE FIRST OF THE WEEK AND SAVE



CALIFORNIA  
PITTED  
oz. Can **29c**

MUSAN  
par **39c**

**59c**

APKINS  
PER WRAP  
**25c**

**10c**

**10c**

SAT., SUN. DECEMBER 22, 23, 24 and 25

**174th AND CRENSHAW**