

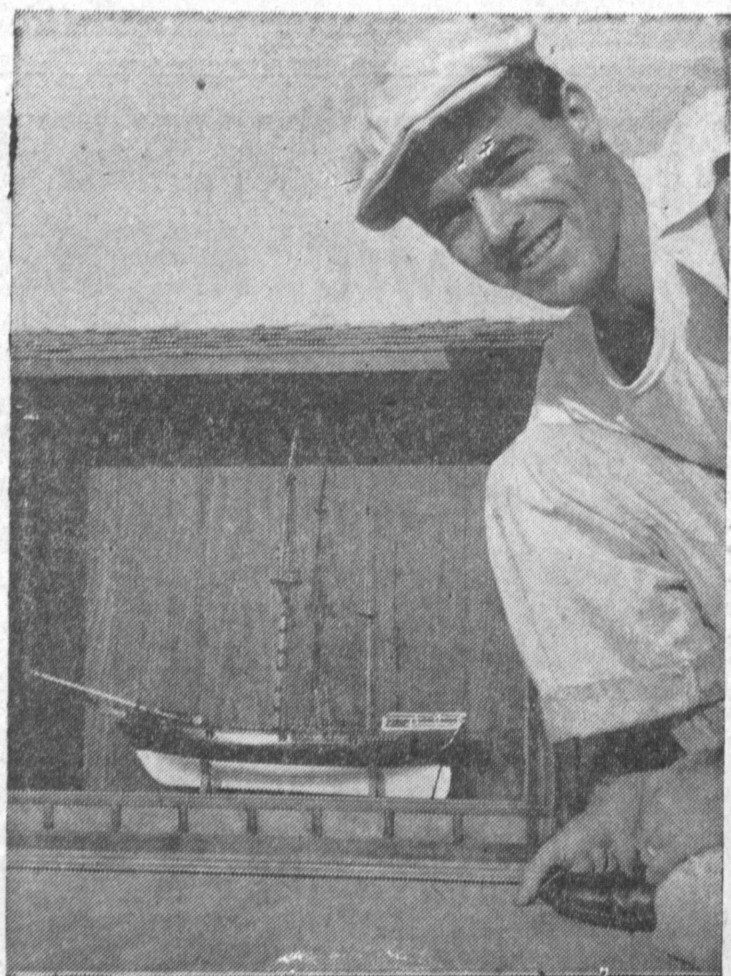
Crenshaw Improvement Approved

Allocation of \$46,004.42 to the City of Torrance for street and highway improvements was approved Tuesday by County Supervisor Burton W. Chace.

Chace said the appropriation will pay for the grading and paving of Crenshaw boulevard from a point 1200 feet south of Pacific Coast highway to Rolling Hills road. Also Palos Verdes boulevard will be widened and paved from Via Monte D'oro to the southerly city limits of Torrance. Chace stated that Via Monte D'oro will also be widened and paved between Calle Miramar and Via Alameda.

Funds from the appropriation will likewise be used to install traffic signals at Yukon Avenue and Redondo Beach boulevard.

Money was appropriated from the County's Aid to Cities Funds, according to Chace.



LARRY GLARUM . . . it's a snap with a cap.

'Magic Cap' Credited With Man's Creativeness

About four years ago, fisherman Larry Glarum of 4515 Newton street, in the Ellinwood section of Torrance, bought a white cap to take with him on fishing jaunts.

Glarum, an engineering planner at Douglas Aircraft El Segundo division, found that it kept the sun out of his eyes, but wasn't worth its weight in cloth when it came to helping him catch fish.

He was about to toss it in the nearest water hole when suddenly he discovered that the cap had other powers more valuable to him.

It helped him create.

He found that when he donned the cap, he could really dream up good creative ideas.

Glarum's creative forte is building things of wood. The

more intricate the better. Since he found that the cap had its wondrous creative abilities, he's turned out some pretty fine pieces of wooden things in his home workshop.

He's built furniture for his newly-purchased home in Torrance, constructed several flying model airplanes, and carved finely detailed model ships.

One of his proudest pieces of work — which he claims he couldn't have even started if it wasn't for the creative cap — is a model of an early day sailing schooner and the carefully detailed wall casing in which it is enclosed.

The boat itself represents many, many hours of creative thinking, carving and fine detail work. But the cabinet which houses it, Glarum feels, is his

real work of art, and more aptly proves his talents as an artist with wood. It contains more than 2818 pieces of wood, and took about 80 hours to build.

"No telling how long it would have taken if I hadn't had my cap on," he remarks.

Glarum's wife, Rose, says she can tell when he is about to create. He gets up from the dinner table with that certain look in his eye, picks up his hat from the corner shelf and migrates to his garage workshop.

No use to try and get any conversation out of him for the rest of the evening once he's donned the cap. Creativeness always finds a way.

Mr. and Mrs. Kent Sanders, of 3411 227th St., announce the birth of a daughter, weighing 9 pounds and 13 1/2 ounces.

Theatre To Name Next Production

Report on the next major production will be made to the membership of ACCENT: Theatre! tonight at 8 p.m., at the YWCA, Carson and Plaza del Amo streets.

Also a financial statement covering the most recent play, "The Rose Tattoo," will be revealed, according to President Mrs. H. F. Heinlein.

This meeting is open to the public, as are try-outs for the traveling company of "The Parade at the Devil's Bridge," one-act fantasy which has six performances before service clubs scheduled in the near future.

Scene of the try-outs will be the Heinlein residence, 2208 Gramercy street, next Tuesday evening.

"All members are urged to turn in ticket money for 'Tattoo,'" Mrs. Heinlein said, "and to bring all bills which may

Two Residents Receive Top Grade Honor

C. Jerry Downing, 17039 Glenburn, a senior in physical education, and Jack O'Carroll, 175 Date ave., a junior in physics education, at the University of California, Santa Barbara college, were named on the Deans List for high scholastic achievement for the spring semester, completed June, 1955.

Santa Barbara college has now completed its first year of the new 408-acre seashore campus located 10 miles up the coast from Santa Barbara.

For the current semester over 2000 students have enrolled, of which 880 are living on the campus in college operated residence halls.

have been incurred during the last production."

Further information about the meeting and try-outs can be obtained by calling her at FA. 6130.



SHOE REPAIR

Bring in your old shoes and we'll fix them up to look like new again. Moderate prices!

KENNY'S SHOE REBUILDING

Conveniently Located Downtown Torrance 1278 SARTORI AVE. (Opposite Newberry's)

Post Office Annex Sought

Bids for a new Torrance Post Office annex are now being taken, Mrs. Clara A. Conner, local postmaster stated this week.

Authorization to obtain a square ft. building to replace the present 3000 sq. ft. annex was received from Washington, D.C., Mrs. Conner pointed out.

Bids, which must be in by December 20, may be submitted either for a lease of space already available or for the construction of a new building to suit specifications.

THANKS

Editor Torrance Press The Annual YMCA Good Neighbor Breakfast is history for 55, but the Torrance YMCA is extremely grateful to you for the publicity given this event. May I extend my personal

Halldale Halloween Party Set

Youngsters at Normandie playground, 22400 S. Halldale ave., are expected to participate in the giant 1955 community Halloween carnival which will be staged under the co-sponsorship of civic committees and the Los Angeles city recreation and Park Department, it was reported yesterday.

The carnival will start at 7:30 p.m., Monday, October 31 and will include bonfires, costume contests, games, booths, and dancing.

thanks to you for the publicity your newspaper gives the association and its youth the year around.

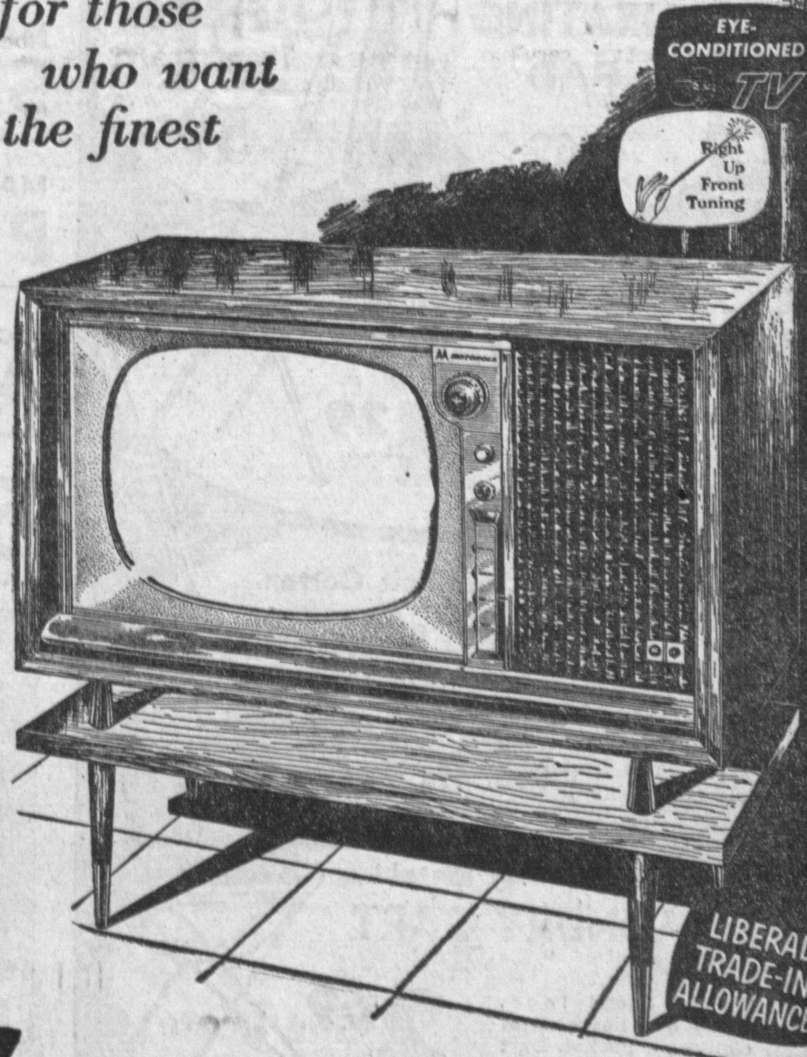
Sincerely, Ralph Morris, Chairman, YMCA board of managers.

McMAHAN'S FOR New easy TERMS on The fine new

Motorola

for those who want the finest

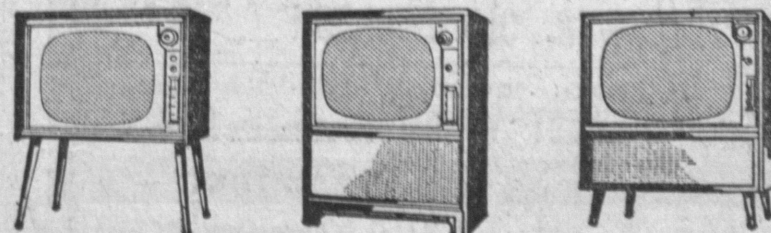
TV \$10 DOWN



21" Motorola Home Theater

Fine wood, horizontal 21" console, grey mahogany cabinet, picture and twin speakers side by side for theatre performance. Model 21K45.

Motorola as low as \$179.95



21C4

21K40

24K9

More for your old set when you trade at McMAHAN'S

FOOTBALL GAME

BE THERE OR SEE IT ON THE BIG NEW MOTOROLA TV

- OCT. 29 IOWA vs. MICHIGAN (4)
- NOV. 5 UCLA vs. COP (2)
- NOV. 12 OREGON vs. STANFORD (2)
- NOV. 13 RAMS vs. BEARS (7)
- NOV. 20 49ers vs. PACKERS (7)
- NOV. 27 RAMS vs. EAGLES (7)

Dr. TARR CREDIT DENTIST IN TORRANCE

says

I'LL SAVE YOU MONEY AND GIVE YOU ALL THE CREDIT YOU NEED AT THE SAME TIME!

EASY CREDIT

FIRST MONTHLY PAYMENT JANUARY 1956

SPECIAL Very Easy Family Credit Plan

YOUR CREDIT IS AS GOOD AS CASH and One Low Payment Covers Your Entire Family . . . You may now have DENTAL ATTENTION for your ENTIRE FAMILY at LOW PRICES and on our FAMILY BUDGET PLAN, by which you can charge the ENTIRE AMOUNT on one charge account and on approval of your credit pay Dr. Tarr after each week or month the small amount YOU DECIDE we should ACCEPT . . . With the FAMILY BUDGET PLAN, when necessary you may extend your payments beyond the usual 15 months . . . NO DELAY—NO RED TAPE. Use your credit.

NO APPOINTMENT NECESSARY Open Daily 10 to 7 P.M., Sat's. All Day

DR. TARR CREDIT DENTIST

1311 1/2 Sartori Ave. FA. 8-0250 — TORRANCE

(Above Sam Levy's Dept. Store)

NOW ENJOY Savings ON DENTAL PLATES

WE DO ALL BRANCHES OF DENTISTRY • Extractions • Bridge Work • Fillings • Crowns • X-rays

THANK YOU GOOD PEOPLE OF TORRANCE! Your response to my credit dental office has been beyond all expectation. As a result of so many recommended patients my volume of business has increased to such an extent that I am now able to offer These . . .

LOW PRICES

QUICK PLATE REPAIRS RELINES - RESETS

PENSIONERS ALWAYS WELCOME

FOR LOW PRICES CALL NOW!



PHONE FA. 8-0250

Cor. El Prado & Sartori FAirfax 8-1252 Torrance

McMahan's FURNITURE STORES