

# 4

**GREAT DAYS**  
THURS., FRI., SAT., SUN.  
**OCT. 6-7-8-9**



# LOOK

**Bountiful Bargains**  
**AMERICA'S FAVORITE**

**FEILERS**  
ALL TENDER  
**BEEF STEAKS**

Frozen Sandwich Steaks

2 1/4-oz. each

# 10

Box of 24 STEAKS \$2.29



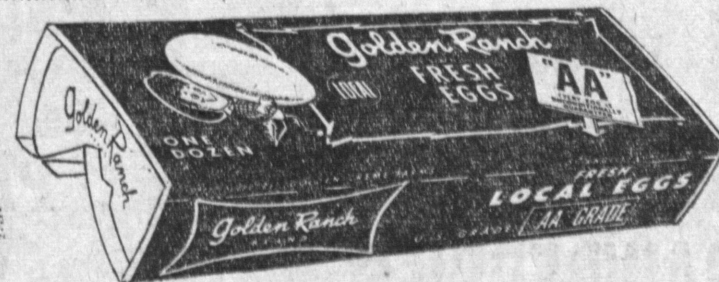
Soup Weather Is Here  
And Foods Co. Brings You Popular

**CAMPBELL'S TOMATO SOUP**

TALL CANS FOR

# \$1

It's harvest time—and FOODS CO. brings you a bumper crop of bargains in fine foods—America's favorites for quality... for good-tasting goodness. We've piled them high in every department... priced them 'way down low on every shelf. So—come shop! Come save! Stock your pantry—stock is high! Fill your freezer to the brim. And enjoy meal after meal of the tops in good eating at a really low cost.

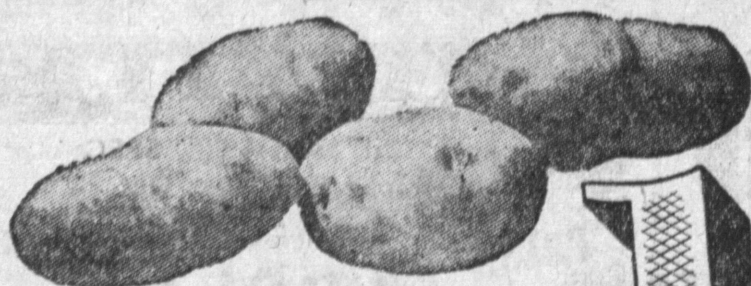


**GOLDEN RANCH, FRESH, LOCAL LARGE "AA" EGGS**

Dozen In Carton

Our special producer-retailer relations allow us to bring you a scoop egg price when the market has been sky-high. Ordinary stores have been selling Large AA Eggs for 71c to 73c dozen.

**PERSONALLY SELECTED PRODUCE**



**U.S. NO. 1 RUSSETS**  
IN PLIOFILM BAG

# POTATOES

# 10 lbs. 29



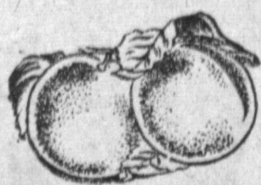
**GRAPE FESTIVAL**

**SWEET PLUMP JUICY GRAPES**

YOUR CHOICE

Thompson Seedless, Large Girdled Fresno Beauties, Tokays, large bunches.

# 5



**VALENCIA - SUNKIST**

**ORANGES**

FANCY, SWEET & JUICY

IN PLIOFILM BAG

# 5 lbs. 29



**SILVER BRAND SHORT CUTS, BLUE LAKE GREEN BEANS**

8 Tall 17-oz. cans

# \$1.00



**VER-NEL BRAND DARK RED KIDNEY BEANS**

10 Tall 17-oz. cans

# \$1.00



**HUNT'S 1/2's or Sliced YELLOW CLING PEACHES**

4 Big 2 1/2 cans

# \$1.00



**HARVEST INN GOLDEN, WHOLE KERNEL CORN**

8 Tall 17-oz. cans

# \$1.00



**HUNT'S ( IN TASTY Tomato Sauce ) PORK & BEANS**

10 No. 2 cans 1-lb. 5-oz.

# \$1.00

Borwick's Ammonia, qt. 23c	For Hanco Boraxo, Reg. 16c	Bango Popcorn, 10-oz. 19c	M.J.B. Rice, 14-oz. 19c	N.B.C. Ritz Crackers, 1-lb. 34c
Bon Ami Powder, 2 cans 25c	Babo Cleanser, 2 reg. cans 25c	Bon Ami Glass Gloss, pt. 35c	Boyle Midway Antrol 49c	Blu-White Flakes, reg. 9c
Campfire Marshmallows, 1-lb. 35c	Cream of Rice 34c	Chef Boy-Ar-Dee Raviola, 15-oz. 26c	Purex Beads 'O Bleach 37c	Bisodal Tablets 29c
Clorox 1/2-gal. Btl. 29c	Calo Dog Food, 2 for 27c	Chicken of the Sea Chunk Tuna, 1/2 can 31c	Chiffon Tissue, 2 for 23c	Cracker Jack Confection, 2 for 15c
Arrowhead Water 2 1/2-gal. Jars 39c PLUS DEP.	Dole's Frozen Pineapple 25c	Downy Flake, Froz. Waffles, 2 for 33c	Chef Boy-Ar-Dee Dinners 41c	Sunshine Crackers, 1-lb. 25c
	Dash Dog Food, 2 for 31c	Driscoll's Frozen Strawberries 27c	Circus Peanuts, 7 1/2-oz. 35c	Cashmere Bouquet Soap, 3 bars for 25c



**Van de Kamp's Doughnut SPECIALS**  
Oct. 6, 7, 8

Plain, Sugar Assorted DOUGHNUTS 6 for 19c (Reg. 6 for 25c)  
Crumb, Chocolate, Orange, Coconut DOUGHNUTS 6 for 25c (Reg. 6 for 30c)  
CRULLERS... 6 for 25c (Reg. 6 for 30c)  
Jelly DOUGHNUTS 3 for 20c (Reg. 3 for 25c)  
2-Layer Chocolate PECAN CAKE 89c ea. (Reg. 98c ea.) 45c half

**KRAFT'S PINEAPPLE JUICE LIMAS**

**KRAFT FINE CHEESE PRODUCE**  
KRAFT'S, MILD JACK or CHEDDAR CHEESE 39c lb.