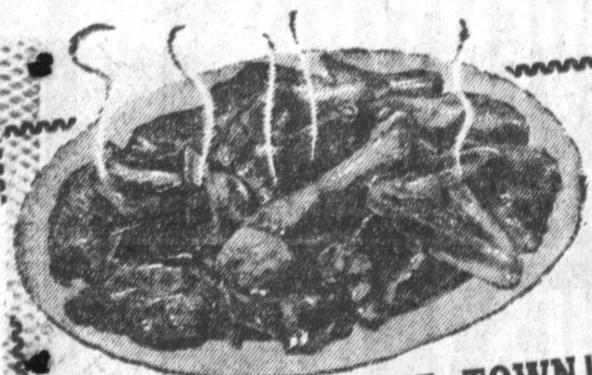


ANNUAL SEPTEMBER FOOD SALE!



3rd
GREAT
WEEK!

THE TALK OF THE TOWN! THE VERY FINEST CUT-UP — WASTE-FREE — PAN-READY

DIRECT FROM ARKANSAS

FRYING CHICKEN

YOUNG, TENDER, PLUMP...
THE VERY FINEST

SOUTHERN FRYING CHICKEN AVAILABLE

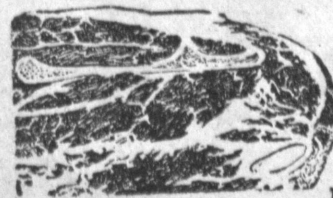
49



LEAN, EASTERN
CORN-FED
CELLO WRAPPED
PACKAGES

SLICED BACON

39

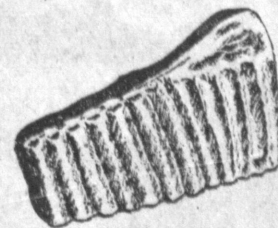


LEAN, EASTERN
JUICY...
WELL-TRIMMED
U.S. GOV'T GRADED
CHOICE

GRAIN-FED STEER, BLADE CUT, CHUCK

BEEF ROAST

29

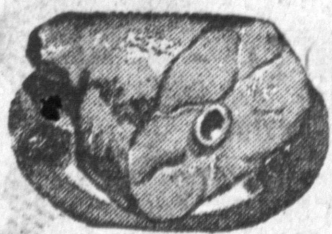


MORRELL'S
PRIDE

LEAN, EASTERN
MEATY, GRAIN-FED, U. S. GOV'T
INSPECTED PORK

SPARE RIBS

39



SELECT MILK-FED
TENDER & JUICY
FULL CUTS, NO STEAKS REMOVED

LEG VEAL

29



PORK SALE!

FEATURING THE VERY FINEST LEAN, EASTERN
U. S. GOV'T INSPECTED, MEATY, GRAIN-FED PORK

LUER'S LEAN, EASTERN

U. S. GOV'T INSPECTED
GRAIN-FED, MEATY SMALL WHOLE SHOULDER

PORK ROAST

27

LUER'S, U. S. INSPECTED
LEAN, EASTERN, CORN-FED

BONELESS PORK ROAST

39

LUER'S TENDER, MEATY
EASTERN, GRAIN-FED

U. S. INSPECTED PORK STEAK

49

STEAK SALE!

FEATURING THE VERY FINEST GRAIN-FED STEER...
WELL-AGED AND WELL-TRIMMED, TENDER
U. S. GOV'T GRADED CHOICE!

U. S. GRADED CHOICE, WELL-TRIMMED

SWISS STEAK

59

U. S. GRADED CHOICE, GRAIN-FED STEER

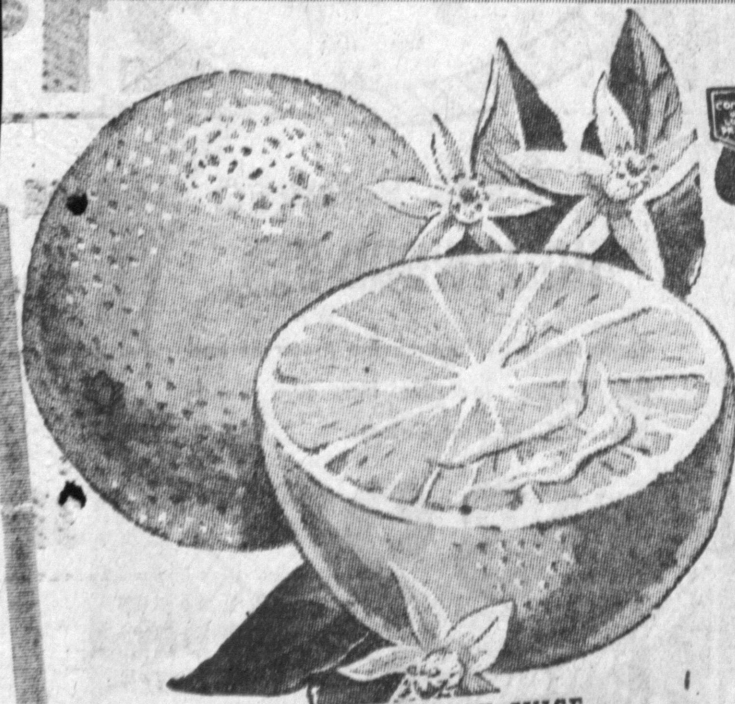
RIB STEAK

69

U. S. GRADED CHOICE, TENDER & JUICY

CLUB STEAK

79



SWEET, FULL OF JUICE
SELECT VALENCIA

ORANGES

5 29

THICK MEATED, GUARANTEED SWEET AND RIPE

CASABA MELONS

3

Clark's Farm Fresh PRODUCE
SUPER MARKETS

EXTRA FANCY, NEW CROP, CRISP, JUICY

SELECT JONATHAN APPLES

THE VERY BEST...
FROM THE STATE OF WASHINGTON

2 25



GARDEN FRESH
LARGE FULL BUNCHES
MAGGIO'S GARDEN PRIZE
TENDER CARROTS

PER BU.

6

Clark's DELICATESSEN
SUPER MARKET

FINEST QUALITY
U. S. GOV'T INSPECTED

KOSHER STYLE SALAMI

39

EASTERN, RINDLESS
LARGE EYE

SWISS CHEESE

BY THE PIECE

49

RICH, CREAMY
MILD AMERICAN

CHEDDAR CHEESE

39

KERMAN-MORILLO JEWELERS
CLARK JEWELRY CENTER
COMPLETE JEWELERS - SALES and SERVICE

SPECIAL!

EXPERT WATCH REPAIRS
WORK DONE ON PREMISES
LOWEST PRICES!

CORO BIRTHSTONE JEWELRY
BRACELETS... 1.00
EARRINGS... 2.00
NECKLACES... 2.00

- | | | | | | |
|--|------------------------------|-----------|---------------------------|--------------------------|-----------|
| ALLSWEET OLEO | Pound Ctn. | 28c | ROMAN MEAL CEREAL | 28-oz. Pkg. | 36c |
| RE-UMBERTO OLIVE OIL | 1/2-Pt. Btl. | 35c | WESSON OIL | Pint | 62c |
| DIAFOODS MILANI'S LOW CALORIE DRESSING | 8-oz. Jar | 35c | SWIFT'S PREM | 12-oz. Can | 39c |
| PINEAPPLE JUICE | LIBBY'S 46-oz. Can | 27c | STAR-KIST CHUNK TUNA | No. 1/2 Can | 32c |
| LEMON JUICE | TREESWEET 8 1/2-oz. Cans | 2 for 21c | NALLEY'S BEEF STEW | 15-oz. Can | 31c |
| SPAGHETTI | BUDGET PACK 1-lb. Cello Pkg. | 22c | SWANSON CHICKEN TV DINNER | 12-oz. Pkg. | 87c |
| ITALIAN TOMATOES | Progresso 2 1/2 Can. | 31c | DERBY CHILI & BEANS | 15-oz. Can | 17c |
| ROAST BEEF HASH | CUDAHY'S Pound Can | 37c | CAT FOOD | PUSS 'N BOOTS 8-oz. Cans | 3 for 25c |
| RAIN DROPS | WATER SOFTENER 24-oz. Pkg. | 25c | BLU-WHITE FLAKES | 9-oz. Pkg. | 26c |
| ALUMINUM FOIL | REYNOLD'S WRAP, 25-ft. | 29c | MARSHMALLOWS | SUNSHINE Lb. Pkg. | 33c |
| BEADS O' BLEACH | 18-oz. Pkg. | 37c | CHIFFON TISSUE | 2 rolls | 25c |
| O-CEDAR DRI-GLO | 6-oz. Jar | 49c | PRINCE HORSEMEAT | Lge. Cans | 2 for 37c |
| BON AMI GLASS GLOSS | Pint Tin | 35c | GOODWIN'S AMMONIA | Quart Btl. | 23c |

COMPARE OUR LOWER PRICES



SEVEN FRIENDLY CLARK MARKETS TO SAVE YOU MORE!

TORRANCE 101 Hwy. at Hawthorne Blvd.	MANHATTAN BEACH Sepulveda at Marine	GARDENA Crenshaw at Compton	LOS ANGELES Western at Imperial	GARDENA Vermont at 140th St.	BELLFLOWER Clark at COMPTON	Wilmington Olive at Rose
--	---	--------------------------------------	--	---------------------------------------	--------------------------------------	-----------------------------------

AMPLE FREE PARKING... LIMIT RIGHTS RESERVED