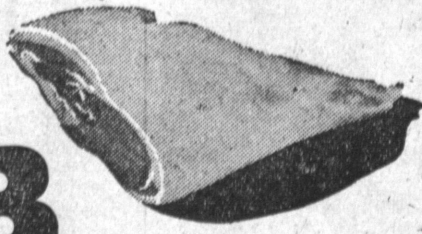


# LAMB SALE!

TENDER, JUICY GENUINE IMPERIAL VALLEY BABY LAMB

U. S. GRADED GENUINE SPRING, TENDER  
DIET PERFECT, DELICIOUS GENUINE BABY

## LEG LAMB



# 57

lb.

TENDER, DELICIOUS, U. S. GRADED GENUINE SPRING  
**LAMB BREAST**

9<sup>c</sup> lb.

U.S. GRADED GENUINE SPRING, EXTRA TENDER BABY SHLDR.  
**LAMB ROAST**

29<sup>c</sup> lb.

U. S. GRADED, GENUINE SPRING BABY FRENCH RIB  
**LAMB CHOPS**

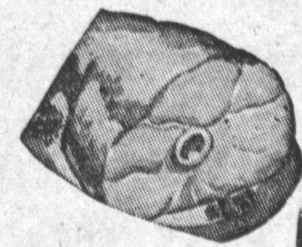
79<sup>c</sup> lb.

# VEAL SALE!

EXTRA TENDER AND JUICY, FANCY MILK-FED SELECT VEAL

EXTRA TENDER AND EXTRA JUICY, FANCY  
MILK-FED SELECTED, FULL CUTS — NO STEAKS REMOVED

## LEG VEAL



# 27

lb.

MORRELL'S GRADE AA BACON . . . 53<sup>c</sup>

FANCY SELECTED MILK WHITE  
EXTRA TENDER AND EXTRA JUICY

## BONELESS VEAL ROAST

49<sup>c</sup> lb.

FANCY SELECTED, MILK WHITE, TENDER, MEATY  
**VEAL BREAST**

12<sup>c</sup> lb.

MILK WHITE, TENDER & JUICY, FANCY SHOULDER  
**VEAL ROAST**

22<sup>c</sup> lb.

FANCY SELECTED, MILK WHITE, TENDER SHOULDER  
**VEAL CHOPS**

39<sup>c</sup> lb.



JUICY TENDER PLUMP  
OVEN-READY

14 TO 18 LB. AVERAGE  
**YOUNG TOM TURKEYS**

# 39

lb.

LEAN EASTERN CORN-FED



**SLICED BACON**  
CELLO WRAPPED PACKAGE

# 35

lb.



FAIRMONT CHICKEN LEGS  
POUND PKG. 79<sup>c</sup> ea.

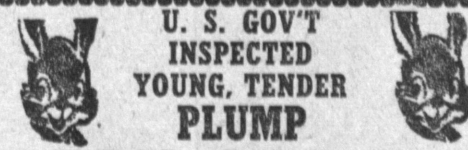
CAMP'S FROZEN  
**BEEF STEAKS**  
2 Steaks In 4-oz. Pkg.  
Single Packs

4 PKGS. FOR \$1.

LUER'S LEAN EASTERN GRAIN-FED TENDER  
U. S. GOVERNMENT INSPECTED

## BONELESS PORK ROAST

49<sup>c</sup> lb.



U. S. GOVT INSPECTED  
YOUNG, TENDER PLUMP

CUT-UP, PAN-READY  
**FRYING RABBITS**

# 59

lb.

ARMOUR'S Lean Meaty Eastern Corn Fed U. S. Govt. Inspected



1 TO 3 LBS AVERAGE  
**SPARE RIBS**

# 39

lb.

CLARK JEWELRY CENTER  
KERMAN-MORILLO JEWELERS  
COMPLETE JEWELERS — SALES & SERVICE

1847 ROGERS BROS.  
INFANT FEEDING

Free Estimates  
WATCH REPAIRING

Your watches cleaned, oiled and electronically adjusted on premises by experts.  
Lowest Prices Anywhere!

**SPOON and RATTLE**  
NOW . . . BOTH  
**\$1.00**  
No Fed. Tax

STRAINED BABY FOOD  
**BEECH-NUT**  
6 4 3/4-OUNCE JARS 57<sup>c</sup>

WHITE KING LGE. PKG. 29<sup>c</sup>  
DETERGENT GT. PKG. 59<sup>c</sup>

WHITE KING LGE. PKG. 25<sup>c</sup>  
WATER SOFTENER GT. PKG. 49<sup>c</sup>

WHITE KING 12-OUNCE CAN  
LIQUID DETERGENT 35<sup>c</sup>

WHITE KING REG. SIZE CANS  
CLEANSER 2 for 25<sup>c</sup>

BLUE BONNET MARGARINE  
POUND PACKAGE 27<sup>c</sup>

The Real Cream  
Dessert Topping Miracle!



49<sup>c</sup>

Strawberries 'n Quips are made for each other!

NABISCO SNOWFLAKE CRACKERS POUND BOX 25<sup>c</sup>  
WESTON'S COCOANUT GEMS COOKIES 9.0Z. BOX 23<sup>c</sup>  
TASTE THE DIFFERENCE  
SUNSHINE HI-HO CRACKERS LB. BOX 34<sup>c</sup>  
GOODNESS YES . . . AND PENNIES LESS  
GOLDEN CREME BREAD LARGE LOAF 25<sup>c</sup>  
SWIFT'S BROOKFIELD BUTTER 1/2-lb. Pkg. 33<sup>c</sup>  
CHALLENGE GRADE AA BUTTER 1/2-lb. Pkg. 33<sup>c</sup>  
Ready-To-Bake Biscuits PUFFIN 2 8-oz. cans 29<sup>c</sup>  
Marshmallows 33<sup>c</sup>  
NIBLET'S MEXICORN 12-oz. Can 16<sup>c</sup>  
SALAD OIL Full Quart 65<sup>c</sup>  
KRETSCHMER'S 12-oz. WHEAT GERM 35<sup>c</sup>  
MARTINELLI'S Full Qt. APPLE JUICE 37<sup>c</sup>  
DIAMOND—125-ft. Roll WAX PAPER 24<sup>c</sup>  
LIQUID CLEANER Full 1/2-Gallon 69<sup>c</sup>  
SOIL-OFF 1/2-Gallon

## Clark DELICATESSEN

LUER FINEST QUALITY  
**ALL MEAT FRANKS** LB. CELLO PKG. 47<sup>c</sup> lb.

CHUCK FULL OF JUICE  
SWEET, THIN SKINNED  
**NAVEL ORANGES** 5<sup>c</sup> lb.

Clark Farm Fresh PRODUCE

**ARTICHOKES**  
LARGE, MEATY GARDEN FRESH 7<sup>c</sup> ea.

FINEST QUALITY  
**BOILED HAM**  
WAFFER SLICED 1/2-POUND 59<sup>c</sup>

MILD AMERICAN  
**CHEDDAR CHEESE**  
RICH CREAMY 39<sup>c</sup> lb.

TABLE SIZE, SWEET AND JUICY  
SELECT ARIZONA  
**GRAPEFRUIT** 8 POUND MESH BAG 39<sup>c</sup>

**PIPPIN APPLES**  
EXTRA FANCY LARGE OREGON 3 lbs. 29<sup>c</sup>

# Clark SUPER MARKETS

OPEN 7 DAYS 9 to 10

Pacific Coast Highway at Hawthorne in Torrance  
● Sepulveda at Marine ● Crenshaw at Compton  
Manhattan Beach Gardena  
● Western at Imperial ● Vermont at 140th St.  
Los Angeles Gardena  
● In Bellflower Clark at Rose ● In Compton Olive at Wilmington  
Ample Free Parking Limit Rights Reserved

EXTRA FANCY, LONG GREEN, SELECT GARDEN FRESH  
**CUCUMBERS** 2 for 19<sup>c</sup>